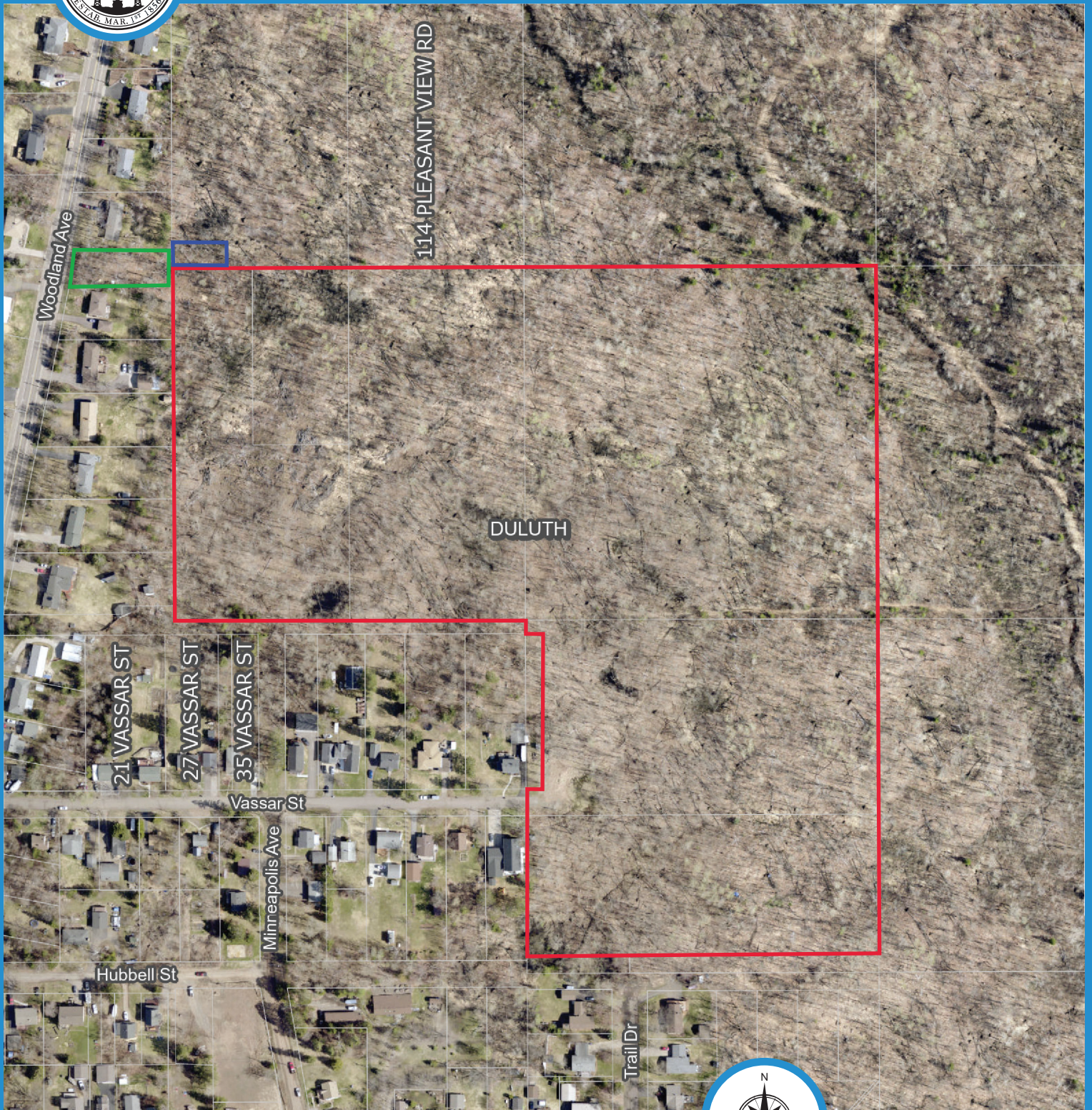







EXHIBIT 2

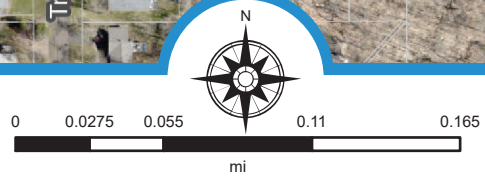


St. Louis County MN



-  Proposed Plat of Amity Bluffs
-  Easement Area (approximate)
-  James Street (currently undeveloped)

Map created using County Land Explorer
www.stlouiscountymn.gov/explorer



County Land Explorer

St. Louis County www.stlouiscountymn.gov/explorer Minnesota

Disclaimer

This is a compilation of records as they appear in the Saint Louis County Offices affecting the area shown. This drawing is to be used only for reference purposes and the County is not responsible for any inaccuracies herein

© Copyright St. Louis County Minnesota | All Rights Reserved Printed: 9/15/2023

