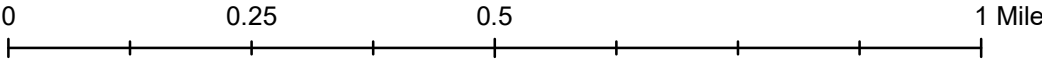
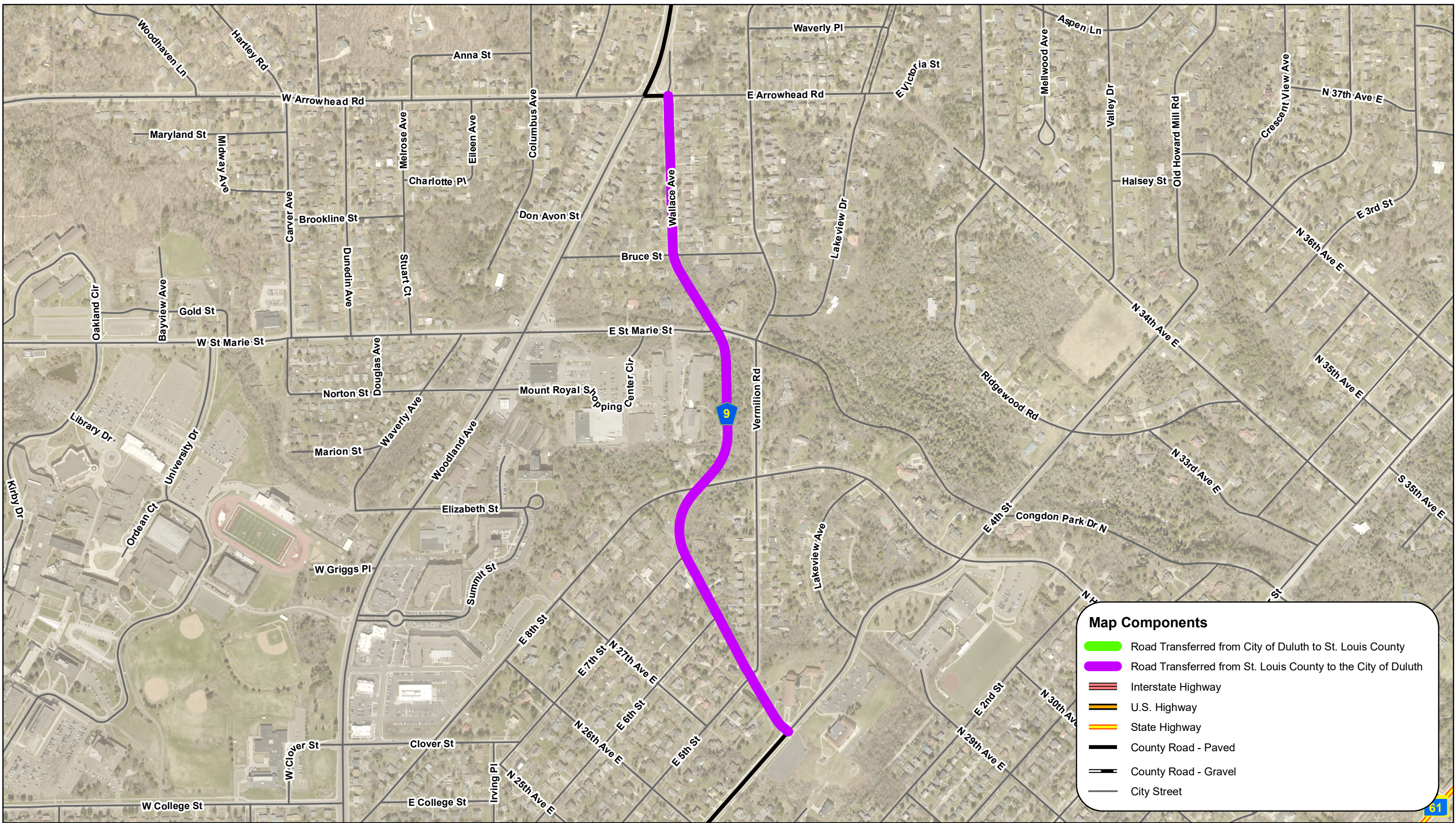


St. Louis County and City of Duluth Roadway Swap

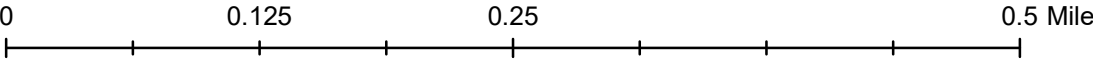
Phase 1: CSAH 9 (E 4th St) - 1.88 Miles*



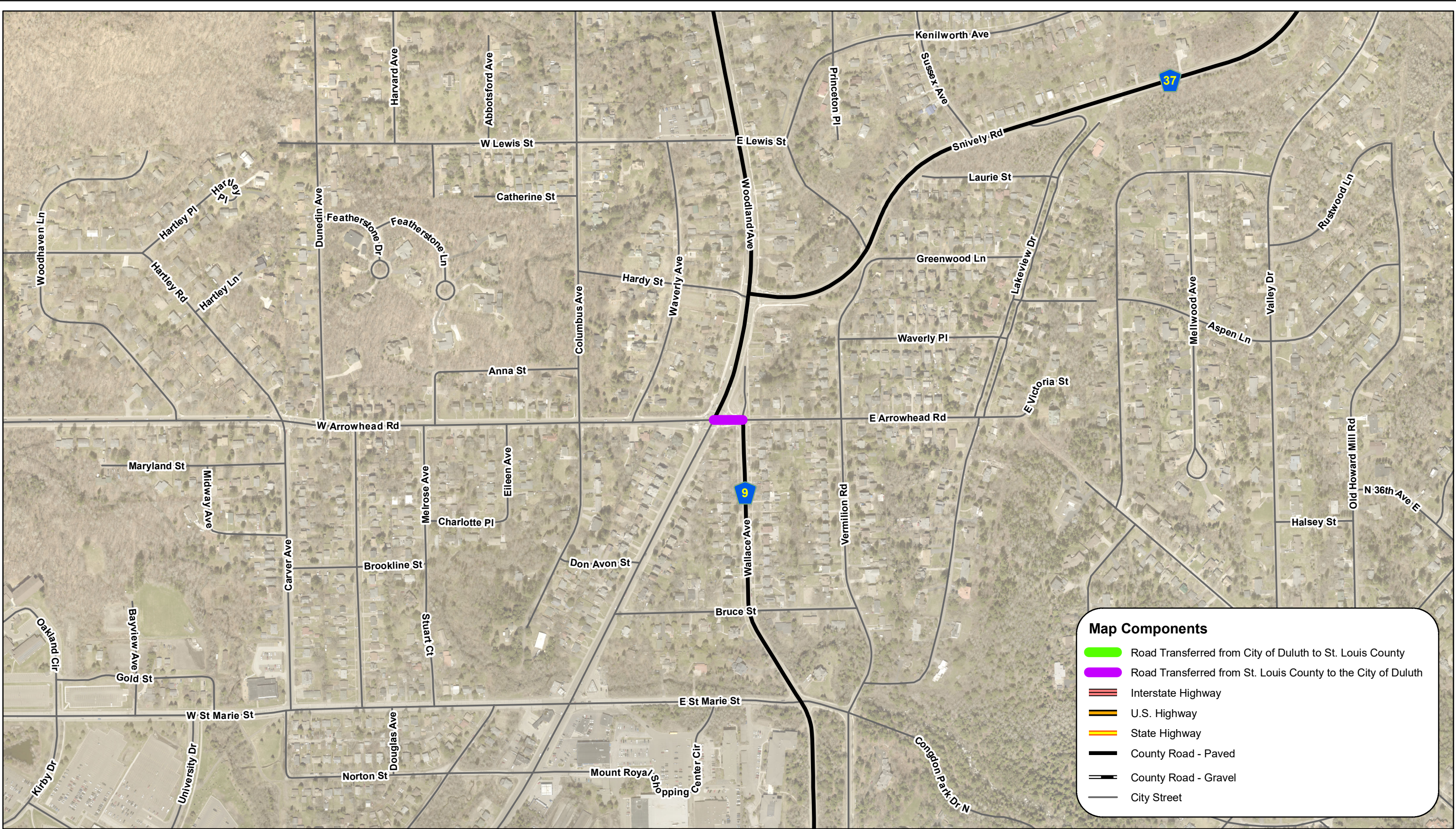


St. Louis County and City of Duluth Roadway Swap

Phase 1: CSAH 9 (Wallace Ave) - 0.66 Miles*

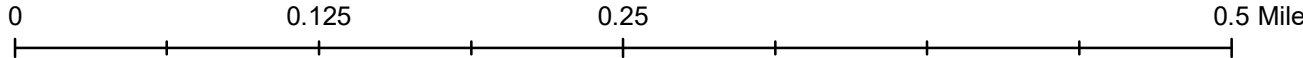


* Mileage is based on State Aid NEEDS lengths



St. Louis County and City of Duluth Roadway Swap

Phase 1: CSAH 9 (E Arrowhead Rd) - 0.03 Miles*

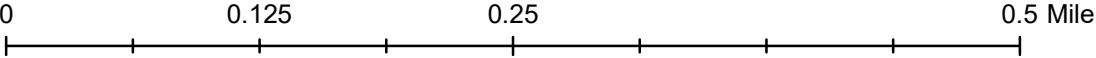


* Mileage is based on State Aid NEEDS lengths



St. Louis County and City of Duluth Roadway Swap

Phase 1: CSAH 12 (E Superior St) - 0.15 Miles*



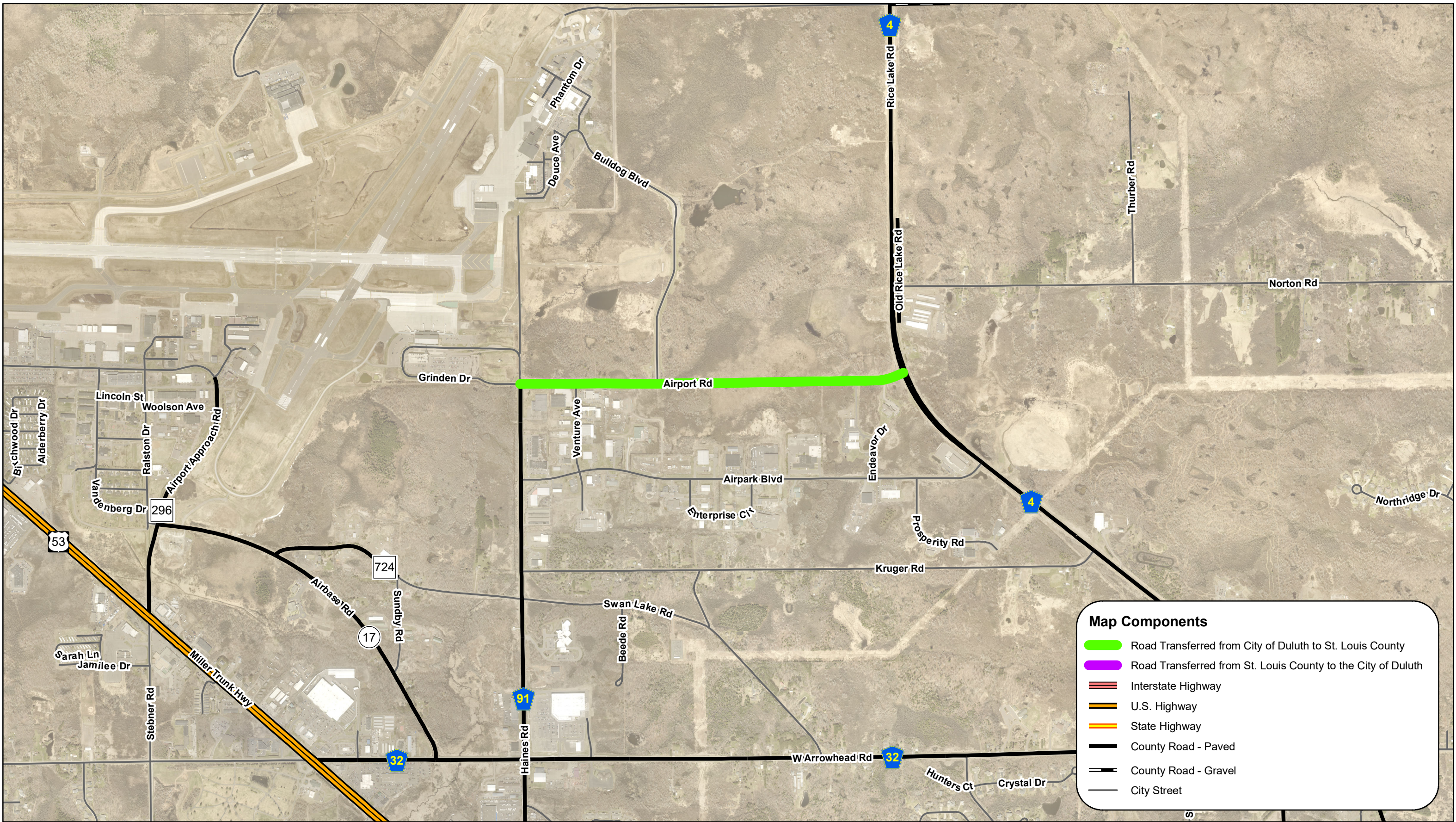
* Mileage is based on State Aid NEEDS lengths



Highland St - 0.13 Miles*

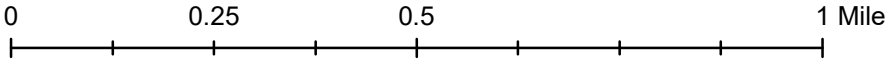
* Mileage is based on State Aid NEEDS lengths

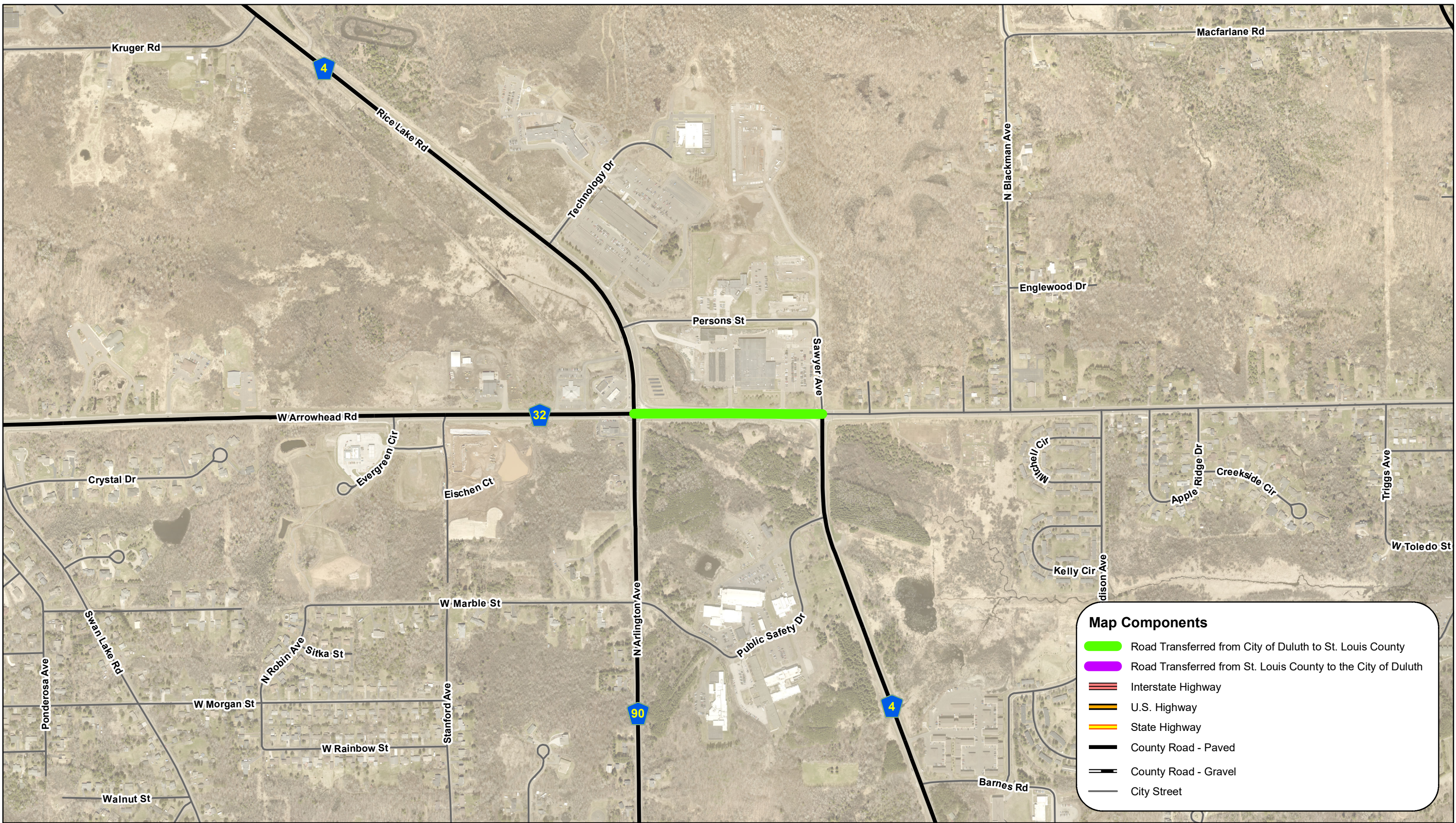




St. Louis County and City of Duluth Roadway Swap

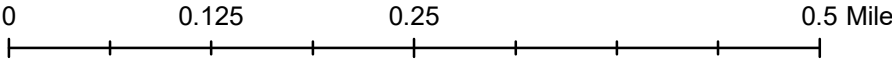
Phase 1: Airport Rd (To Be Designated CSAH 91) - 1.04 Miles*



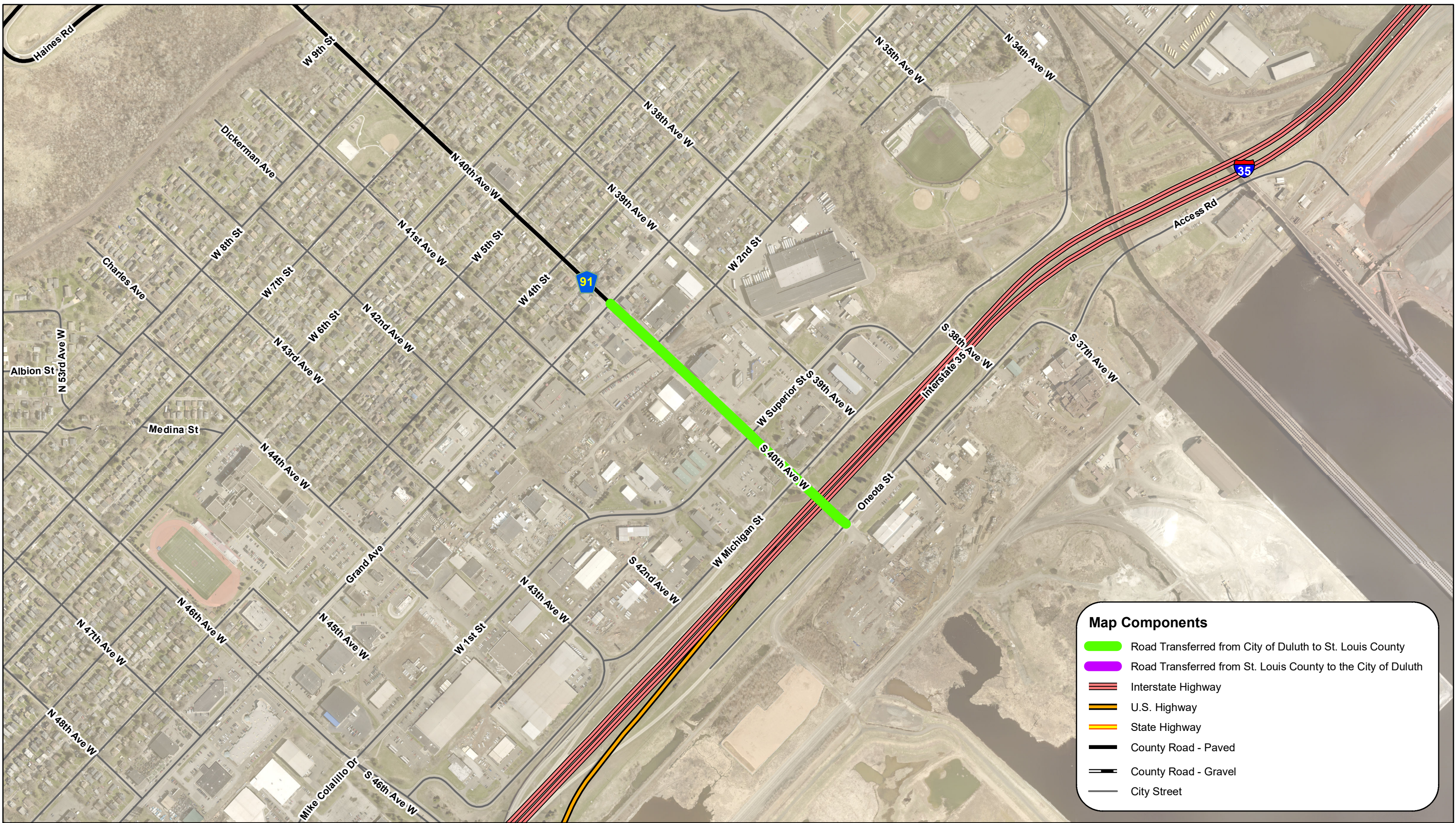


St. Louis County and City of Duluth Roadway Swap

Phase 1: W Arrowhead Rd (To Be Designated CSAH 32) - 0.25 Miles*

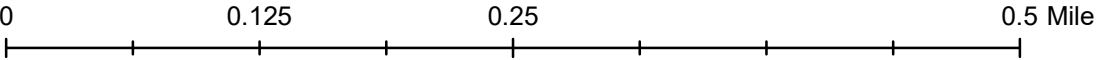


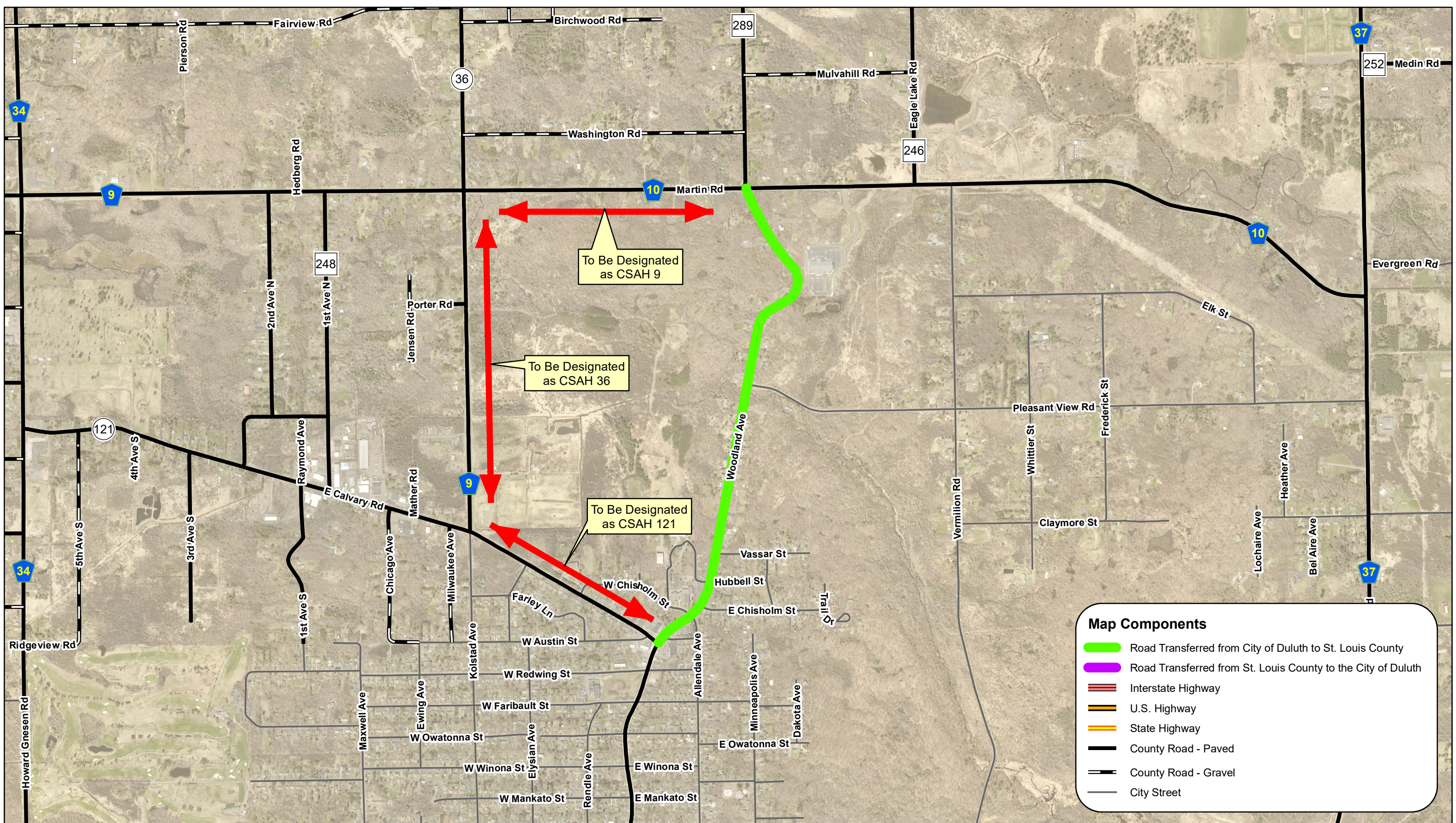
* Mileage is based on State Aid NEEDS lengths



St. Louis County and City of Duluth Roadway Swap

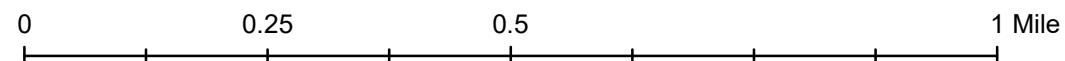
Phase 1: 40th Ave W (To Be Designated CSAH 91) - 0.33 Miles*





St. Louis County and City of Duluth Roadway Swap

Phase 1: Woodland Ave (To Be Designated CSAH 9) - 1.13 Miles*



* Mileage is based on State Aid NEEDS lengths

