

EXHIBIT A

VACATION EXHIBIT

VACATION DESCRIPTION:

That part of Ebony Street DULUTH HEIGHTS 6TH DIVISION, City of Duluth, St. Louis County, Minnesota between the south line of Myrtle Street and the north line of Palmetto Street (a.k.a. Central Entrance) with retained utility easement over, under and across said vacation area.

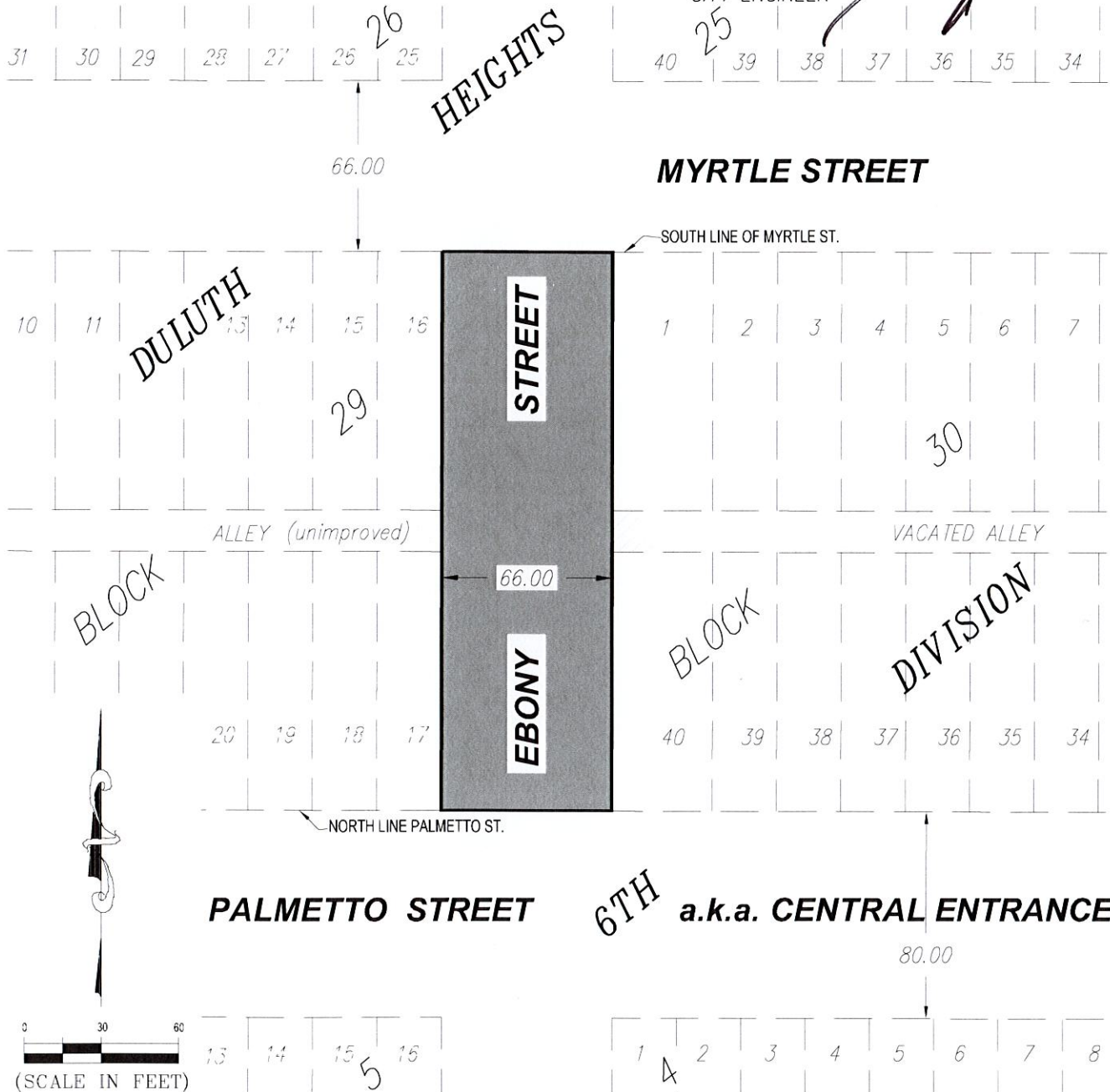


AREA TO BE VACATED WITH
RETAINED UTILITY EASEMENT

APPROVED BY:

CITY ENGINEER

[Signature] 6-7-22



I hereby certify that this plan, specification, or report was prepared by me or under my direct supervision and that I am a duly Licensed Land Surveyor under the laws of the State of Minnesota.

Print Name: Paul A. Vogel

License # 44075

Signature:

[Signature]

Date: 06/01/2022

DATE PREPARED: 06/01/22

PROJ NO: 220679

FILE: 220679vSURV.

SHEET 1 of 1 SHEETS



PERFORMANCE
DRIVEN DESIGN.
LHBcorp.com

21 W. Superior St., Ste. 500 | Duluth, MN 55802 | 218.727.8446