



# **ST. LOUIS RIVER CORRIDOR NEIGHBORHOOD PARKS MINI-MASTER PLANS PROPOSAL DULUTH, MINNESOTA**

June 19<sup>th</sup>, 2015

Prepared by Hoisington Koepler Group Inc. with Emmons & Olivier Resources, Inc.







# CONTENTS

» 01	FIRM PROFILE .....	02
» 02	PROJECT UNDERSTANDING .....	05
» 03	PROJECT TEAM .....	07
» 04	APPROACH + WORK PLAN .....	10
» 05	SCHEDULE, ADDENDUM #1, FEE PROPOSAL, & REFERENCES .....	17
» 06	QUALIFICATIONS .....	20
» 07	RESUMES.....	22
» 08	PROJECT EXPERIENCE .....	31

*Proposal to The City of Duluth for park master planning services.  
Submitted June 19, 2015 by Hoisington Koegler Group Inc.*





Hoisington Koegler Group Inc.  
Landscape Architecture  
Planning  
Urban Design

123 N. 3rd Street, Suite 100  
Minneapolis, MN 55401  
612-338-0800

COLLABORATE

LISTEN

EXPLORE

CREATE

*HKGi believes that design, when inspired by the character of the people and the land, can create a unique and identifiable sense of community.*

June 19, 2015

Lisa Luokkala, Project Coordinator  
Parks and Recreation  
City of Duluth  
411 W First St  
City Hall, Purchasing Room 100  
Duluth, MN 55802

## Re: St. Louis River Corridor Neighborhood Parks Mini-Master Plans

Dear Lisa & Members of the Selection Committee:

On behalf of the Hoisington Koegler Group Inc. (HKGi) Team, we are pleased to submit this proposal to provide professional planning and design services to prepare mini-master plans for 8-11 parks in the St. Louis River Corridor.

HKGi has over 30 years-experience preparing award winning park plans and designs for communities across the upper mid-west. We have a successful history of neighborhood park design and construction; recent projects include Countryside Park in Edina (constructed in 2014), Levin Park (constructed 2011) and the 54th Street Triangle Park (currently under construction) both in Minneapolis, and an on-going relationship with the City of Chanhassen for designing and implementing small scale, strategic park improvements. We also have experience in park facility inventory and assessment and have completed inventories for each park in the cities of Bloomington, Chanhassen, Worthington, and Saint Paul.

Emmons and Olivier Resources, Inc. (EOR) will provide expertise in natural and water resources and sustainable design practices. HKGi and EOR are frequent collaborators and have recently completed projects in Minneapolis and Moorhead that successfully integrate sustainable natural resource management with recreation.

We propose a planning process that will:

- » Engage the City, the Parks and Recreation Commission, the neighborhoods, and the broader community in the planning process so the mini-master plans are supported by citizens and elected officials and positioned for ½ and ½ tax matching funds
- » Provide detailed evaluation and analysis of each park's uses, facilities, and natural resources
- » Make sustainable recommendations for improvements to each park that fit within the goals of the city-wide park and recreation system and the St. Louis River Corridor Vision
- » Develop cost and asset management tools that ensure that the City is able to sustainably maintain improvements over the long-term

We are excited about this project and its contribution to the City's vision for reinvestment in the St. Louis River Corridor. Please contact us if you have any questions about our proposal or to schedule a time to discuss the mini-master planning needs and process.

Sincerely,

Lil Leatham, Associate  
612.252.7127 | lil@hkgi.com

Bryan Harjes, Vice President  
612.252.7124 | Bryan@hkgi.com





LEVIN PARK  
MINNEAPOLIS, MN  
HKGI PROJECT WORK

# 01. FIRM PROFILE



## Hoisington Koegler Group Inc. (HKGi)



**Hoisington Koegler Group (HKGi)** is a firm of talented planners, landscape architects, and urban designers who share their passion for planning and design with clients striving to create lasting places of quality. HKGi has over thirty years of experience designing high quality and distinctive public and private spaces on budget and on time. Clients seek HKGi to lead their planning and design efforts because of our ability to creatively synthesize complex program needs and planning issues within a process of consensus-building.

### COLLABORATE

We strive to integrate diverse perspectives into all of our work. We bring together teams of professionals that thrive on a studio approach to design and are passionate about the continuous process of teaching and learning.

### LISTEN

In order for design to reflect the unique character of any given place, the natural, cultural, and historical values need to be heard and understood. We will continually listen to clients and stakeholders to ensure we build upon the inherent strengths of the land and consistently provide direction that respects the context of the project at hand.

### EXPLORE

By embracing the complexities of our projects we can create new solutions that bring obvious and measurable value to our clients. Our thirst to seek out new connections between people and the land is at the heart of our explorations and is integral to our design process.

### CREATE

Only by understanding how a planning principle evolves into a built community asset can we actually begin to see how our work affects the physical character of any given place. We will always strive to carry our conceptual planning ideas forward to built realities so that our plans can have a real and tangible contribution to our culture.

#### Hoisington Koegler Group Inc.

123 North Third Street Suite 100

Minneapolis, Minnesota 55401

p: 612.338.0800

f: 612.338.6838

e: [info@hkgi.com](mailto:info@hkgi.com)

w: [www.hkgi.com](http://www.hkgi.com)

Est. 1982

#### Principals:

Mark Koegler, ASLA, CEO

Paul Paige, PLA, President

Brad Scheib, AICP, Vice President

Bryan Harjes, PLA, LEED AP, Vice President

#### Associates:

Lil Leatham, PLA

#### Staff:

» 8 Licensed Landscape Architects

» 3 Certified Planners

» 1 Graduate Planner

» 4 Graduate Landscape Architects

#### Services:

» Park Planning and Design

» Public Participation

» Schematic & Site Design

» Landscape Architecture

» Greenway Planning

» Bikeway and Trail Planning

» Urban Design

» Streetscape Design

» Downtown Planning

» Corridor Studies

» Strategic Planning



## Emmons & Oliver Resources, Inc. (EOR)

**Emmons & Olivier Resources, Inc.**  
651 Hale Avenue North  
Oakdale, Minnesota 55128  
p: 651. 770. 8448  
f: 651. 770. 2552  
e: info@EORinc.com  
w: www.EORinc.com  
Est. 1997

### Services:

- » Water Resources + Civil Engineering (traditional and alternative)
- » Environmental Consulting
- » Site Design + Planning
- » Land Surveying
- » GIS + Web-mapping
- » Municipal Engineering including Feasibility Studies, Street, Storm Water, Sanitary Sewer and Water System Design
- » Construction Contracts and Administration
- » Commercial Area Revitalization
- » Transit Oriented Development
- » Zoning Ordinance
- » Comprehensive Planning
- » Environmental Review



Emmons & Olivier Resources, Inc. (EOR) is a mid-sized (40+ employees) multi-disciplinary environmental engineering, planning, and design firm that specializes in the fields of water resources/civil engineering, stormwater management, sustainability planning, natural resources management, and ecological restoration. EOR has established itself as an innovative firm in the highly integrated field of water resources engineering and environmental consulting.

Our philosophy: to enhance and improve the environment by designing non-intrusive solutions that mimic natural systems, is unique among engineering firms and results in well designed projects that seamlessly integrate responsible stormwater management within the overall site design. Our clients include a broad range of public, private, and governmental entities.





ANDREWS  
PARK  
7200 117th Ave. N.  
City of  
Champlin  
Parks & Recreation

ANDREWS PARK  
CHAMPLIN, MN  
HKGI PROJECT WORK

## 02. PROJECT UNDERSTANDING





SAINT LOUIS RIVER  
CORRIDOR VISIONING  
DULUTH, MN

## Project Understanding

Since 2011, the City of Duluth has increased planning and investment along the St. Louis River Corridor. Coordinated efforts of environmental cleanup, new jobs, increased housing options, and investment in infrastructure are underway. In 2014, the City passed the St. Louis River Corridor ½ and ½ Tourism Tax to fund improvements in the corridor. In recognition that parks and recreation are an important component of the St. Louis River Corridor tourism experience, St. Louis River Corridor parks qualify for up to \$50,000 of ½ and ½ tax funding by securing a 1:1 match.

The City of Duluth is seeking to hire a professional consultant to prepare mini-master plans for eight (8) neighborhood and multi-use parks in the St. Louis River Corridor. The parks are: Norton Park, Fond du Lac Park, Riverside Park, Blackmer Park, Piedmont Community Recreation Area, Harrison Community Recreation Area, Merritt Community Recreation Area, and Keene Creek Park. The City would also like to consider preparing master plans for three (3) additional parks, Historical Park, Smithville Park, and Grassy Point Park under the same contract. Each park is unique in setting, context, use, issues, and needs.

The mini master plans combined will serve as a long range plan to meet the St. Louis River Corridor's park and recreation needs. Plans for each park must balance the desires of each neighborhood with recreation needs in the St. Louis River Corridor and the City as a whole, and be consistent with the over arching vision for the St. Louis River Corridor, the 2010 Parks and Recreation Master Plan, and the 2011 Trail and Bikeway Plan. The mini- master planning process will engage the community and focus on pragmatic solutions to replacing park infrastructure, addressing safety and ADA accessibility issues, access and connectivity, natural resource management, and improving aesthetics in each park. Improvements that are economically and environmentally sustainable over the long-term are paramount. Capital costs, maintenance and operations costs will be identified. Phasing will be addressed with attention to near term facility, site improvements, and natural resource improvements that can attract matching funds for the St. Louis River Corridor ½ and ½ Tourism Tax dollars.





GLEN PARK MASTER PLAN  
RIVER FALLS, WI  
HKGI PROJECT WORK

## 03 • PROJECT TEAM





GLEN PARK  
RIVER FALLS, WI

## Project Team

Members of the HKGi and EOR Team have been chosen for their experience working in Duluth and their expertise with neighborhood park planning, design, and construction as well as expertise in natural resources and water quality improvements. HKGi will lead the project. EOR will lead the stewardship and natural resource sections of the mini-master plans. HKGi and EOR are frequent collaborators. Recent work includes: the Nokomis-Hiawatha Regional Park Master Plan, Moorhead River Corridor Master Plan, and the Minnehaha-Hiawatha Strategic Plan.

The following provides a summary of our core staff team. Individual resumes with more detail can be found at the end of this proposal.

**Lil Leatham, PLA**, an Associate with HKGi, will serve as the overall project manager, primary contact, and lead park planner. Lil is a registered landscape architect with over 15 years of experience in park and trail planning and design. Over the last 5 years Lil has worked on multiple projects in Duluth including the award winning Parks and Recreation Master Plan, the 2011 Trail and Bikeway Plan, St. Louis River Corridor Visioning, and Mini-Master Plans for the West Duluth Sports Corridor, Morgan Park, Memorial Park, and Gary New Duluth. Lil will be responsible for directing all aspects of the work, meeting facilitation, and stakeholder engagement.

**Bryan Harjes, PLA, LEED AP**, Principal at HKGi will ensure that each mini-master plan fits within the overall vision for the St. Louis River Corridor and that facilities complement other park planning efforts. Bryan's recent Duluth project experience includes the St. Louis River Corridor Visioning Workshop, Fairmount Park/ Lake Superior Zoo Visioning, the Tallas Island Concept Plan, and the West Duluth Sports Corridor. He brings 15 years of experience in park planning, design and construction. Recent Duluth Projects give him deep knowledge of City's process and expectations. He will ensure quality control for project deliverables.

**Gabrielle Grinde, PLA**, will be the lead landscape architect for the project. She will coordinate the park inventory and analysis and be the lead designer for park improvements and concepts. Gabrielle brings a wealth of neighborhood park design and construction from her work on Countryside Park in Edina, neighborhood park projects in Chanhassen, and her design for Hartkopf Park in Brooklyn Park. Gabrielle has also recently participated in the St. Louis River Corridor and Fairmont Park/ Lake Superior Zoo Visioning projects and the Tallas Island Concept Plan.



HGKi staff **Anna Springer and Kevin Clarke** will be involved in all aspects of the assessment and planning process. Together they bring a wealth of design and park revitalization experience, strong graphic capabilities, and familiarity with Duluth.

**Amy Bower, PLA** will assist with cost estimating and feasibility assessment. Amy brings 20 years experience designing and constructing neighborhood park planning projects in communities throughout Minnesota.

**Jason Naber, WDC** - is a partner with EOR and is a senior biologist. Jason will lead the mini-master plan vegetation management & environmental stewardship evaluation and recommendations. He has 24 years of experience in natural resource management and ecological restoration. He has been the project lead for several resource management plans, comprehensive wetland management plans, and a project manager for several total maximum daily load (TMDL) studies.

**Derek Lash, PE, CPESC** with EOR, will be the project civil engineer and will lead park infrastructure sustainability upgrades and recommendations. Derek brings 16 years experience in the design, documentation, and management of civil engineering projects including transportation, LID, stormwater management and wetland restoration.



CEDAR FIELD PARK, MINNEAPOLIS  
HKGI PROJECT WORK





PLYMOUTH CITY HALL  
PLYMOUTH, MN  
PHOTO CREDIT: HKGI

# 04 • APPROACH + WORK PLAN



## Project Approach

Parks bring multiple benefits to communities including preservation of natural and cultural heritage, resident and community health, increased property values, and gathering places for neighborhoods. In fact, when asked about a favorite place in their community, people often name nearby parks. We are passionate about the value of sustainable high quality parks to the City of Duluth and have diverse experience in neighborhood park planning and design, natural resource stewardship, trail planning and design, and capital and operational cost estimating. Our approach places a high priority on:

- » Simultaneously balancing needs for each park individually and within the context of recreation within the broader St. Louis River Corridor and the City of Duluth parks and recreation system
- » Creating a replicable template for inventorying and assessing park facilities and features that will be used to inventory the 8-11 parks and can be applied by City Staff to all parks city-wide (over time)
- » Detailed evaluation and analysis of each park's uses, facilities, natural resources, aesthetics, access, and connectivity
- » Engaging the entire community – city staff, political leaders and advisory commissions, neighborhood groups, and stakeholders to identify needs and solutions for each park
- » Identifying innovative, pragmatic, and sustainable design solutions that can be implemented and maintained over time
- » Phasing and prioritization that identifies projects that can attract matching dollars from the community for St. Louis River Corridor ½ and ½ Tourism Tax funding
- » Development of an asset management database that identifies estimated facility life, estimated costs for capital projects, and routine maintenance costs as well as potential funding sources and partners for each park

The HKGi team envisions a three step process to prepare the eight high quality park mini-master plans. We envision conducting a comprehensive community input process which utilizes a staff advisory committee, engagement with Parks Commissioners representing the St. Louis River Corridor, stakeholder meetings, and a community meeting for each park to help guide and inform the final mini-master plans.

The tasks in the work plan that follows represent our proposed planning process. We view this work plan as a starting point for arriving at a final scope consistent with the City's desired project outcomes and budget. As a first step in the planning process, we will work with you to refine the work plan and schedule.





TASK 1 SUMMARY
<b>Meetings</b> <ul style="list-style-type: none"><li>» Project Coordination (Go-to-Meeting)</li></ul>
<b>TRIP #1</b> <ul style="list-style-type: none"><li>» Staff Advisory Committee Meeting #1 and Tour (Project Kick-off)</li><li>» Stakeholder Listening Sessions (up to 4)</li></ul>
<b>Deliverables</b> <ul style="list-style-type: none"><li>» Project Goals &amp; Objectives</li><li>» Project Schedule</li><li>» Standard Park Evaluation Worksheet</li><li>» Inventory and Assessment for Each Park</li><li>» Site Analysis for Each Park</li><li>» Meeting Summaries</li></ul>
<b>City Staff Responsibilities</b> <ul style="list-style-type: none"><li>» Provide Background and Base Map Information</li><li>» Staff Advisory Committee Meeting Coordination and Notification</li><li>» Parks and Recreation Commission Update</li><li>» Project Introduction Information/Presentations to Community Groups</li></ul>

Phase 1: Organization & Inventory (July - September)

The initial task for the project engages the Duluth City staff (Parks and Recreation, Properties and Facilities Management, Engineering, and Maintenance) and to confirm the project goals and objectives, discuss issues and opportunities, and set the foundation for the mini-master plans. We will collect existing background data and create base maps for each park. We will visit and inventory each park to gain a strong understanding of the current programming, condition of facilities, and natural resources in each park. Early in the process, we will meet with key stakeholders such as Parks and Recreation Commissioners representing the St. Louis River Corridor, neighborhood community clubs, recreation user groups, or historic preservation groups to get an initial understanding of issues that need to be addressed.

Specific sub-tasks include:

TASK 1.1 PROJECT ORGANIZATION MEETING WITH PARKS AND RECREATION STAFF (GO-TO-MEETING)

- » Confirm schedule and project process
- » Coordinate base mapping and background data

TASK 1.2 COLLECT BACKGROUND DATA & SUMMARIZE

- » Collect & summarize information about the parks and facilities (building assessments, existing inventory and condition information, current plans affecting the parks, improvements since the 2010 Parks and Recreation Master Plan, etc.)
- » Review relevant planning documents (St. Louis River Corridor Vision, Duluth Parks and Recreation Master Plan, Duluth Trail and Bikeway Plan, relevant small area plans, athletic field inventory)
- » Review demographic data based on 2010 census

TASK 1.3 DEVELOP CAPITAL COST AND MAINTENANCE DATABASE

- » Review revenues and capital and maintenance expenditures of the parks and facilities
- » Develop excel spreadsheet data base to track existing and future estimated capital and maintenance costs

TASK 1.4 PREPARE BASE MAPS

- » Prepare a base map (aerial photo with park boundary, facilities, and topography, creeks and other natural resources identified) for each park

TRIP #1 (TASKS 4-6)

We envision this as a two day trip to Duluth for 4 members of our team. On this trip we will tour the parks with the Staff Advisory Committee, preform a detailed inventory for each park, and meet with key stakeholders.



## **TASK 1.5 CONDUCT CITY OF DULUTH STAFF ADVISORY COMMITTEE KICK-OFF MEETING & TOUR**

- » Representatives from Parks, Planning, Engineering, Architecture and Recreation Maintenance Operations. Parks and Recreation Commissioners from the St. Louis River Corridor districts and/or agency stakeholders such as the Duluth-Superior Metropolitan Interstate Council or the DNR will be invited to this meeting as appropriate
- » Confirm project goals & objectives
- » Discuss issues & opportunities in each park

## **TASK 1.6 CONDUCT STAKEHOLDER LISTENING SESSIONS**

- » Up to 4 meetings with neighborhood community clubs, business groups, recreation user groups, etc. to get a better understanding of needs and desires

## **TASK 1.7 INVENTORY THE PARKS**

- » Create a standardized park inventory and assessment process and field assessment worksheet that can be used for all parks and applied system-wide
- » Conduct a site visit and detailed assessment of each park's facilities and condition, program, and natural resources
- » Document with a photo inventory of all facilities in each park
- » Analyze the context(s) of the parks including access and connectivity
- » Summarize the inventory information and photos in a format that can be applied to all parks city-wide (by staff, over time)

## **TASK 1.8 PREPARE SITE ANALYSIS**

- » Graphic and written format

## **TASK 1.9 PREPARE PROJECT INTRODUCTION INFORMATION**

- » Prepare a project poster, presentation, and website content for Staff to use to inform community groups of the project and process



PLYMOUTH CITY HALL  
PLYMOUTH, MN  
HKGI PROJECT WORK



TASK 2 SUMMARY
<b>Meetings</b>
<u>TRIP #2</u>
» Staff Advisory Committee Workshop (needs assessment, review preliminary recommendations/ concepts, & community meeting strategy)
<u>TRIP #3</u>
» Community Meetings (8-11 meetings)
<b>Deliverables</b>
» On-line Input
» Community Needs Assessment & Input Summary
» Meeting Materials and Summaries
<b>City Staff Responsibilities</b>
» Staff Advisory Committee Meeting Coordination and Notification
» Parks and Recreation Commission Update
» Community Meeting Coordination and Notification

## Phase 2: Recreation Needs Assessment and Preliminary Recommendations (September-December)

Task 2 focuses on specific park needs in the context of Duluth’s parks and recreation system city-wide to develop a balanced strategy for the future. We will engage the community to confirm and refine how best to serve park and recreation needs in each park. We will ask questions of key user groups and the public about how they use the park today, what facilities, programs or services are lacking, their reaction to preliminary recommendations and/or concepts. To do this we will conduct a series of 8-11 community meetings (one for each park) to elicit feedback from the neighborhood and broader community. We will also provide an opportunity for on-line input for those who cannot attend meetings.

Specific sub-tasks include:

### TASK 2.1 ASSESS SYSTEM-CONTEXT

- » Evaluate needs for each park within the broader context of City using the Parks and Recreation Master Plan, the Trail and Bikeway Plan and the vision for the St. Louis River Corridor as guides with particular attention to the city-wide recommendations for recreation centers, park and recreation delivery guidelines, and park and facility classifications and standards.

### TASK 2.2 DEVELOP PRELIMINARY REINVESTMENT RECOMMENDATIONS AND CONCEPTS

- » For each park we will identify recommendations for reinvestment and new park elements related to:
  - » Programs and activities
  - » Facilities (fields, courts, buildings, play areas, specialty recreation, ADA accessibility, etc.)
  - » Park site features (parking, lighting, landscaping, wayfinding)
  - » Natural resources (creek buffers, invasive species, natural resource management, stormwater, etc.)

### TASK 2.3 STAFF ADVISORY COMMITTEE WORKSHOP (NEEDS ASSESSMENT AND PRELIMINARY RECOMMENDATIONS)

- » Review the analysis and needs assessment findings, and preliminary recommendations and concepts for each park
- » Refine initial concepts for each park
- » Review and confirm community questionnaire questions and & input gathering methods

### TASK 2.4 ON-LINE INPUT/VIRTUAL OPEN HOUSE

- » Develop and provide an on-line questionnaire for the public to weigh-in on the programs, facilities and preliminary recommendations and concepts for each park. The questionnaire will allow participants to answer questions about all parks or just focus on one park.



## TASK 2.5 COMMUNITY MEETINGS

- » Hold a community meetings for each park (8-11 meetings over 2 evenings or on a Saturday) to gather input on needs, opportunities, and initial recommendations and concepts. The meetings will be held in or near each park and will allow participants the opportunity for hands-on input and exercises that may include:
  - » Design a park exercise
  - » Priorities exercise
  - » Pros & cons dots exercise
  - » Issues and opportunities tour

## TASK 2.6 SUMMARIZE NEEDS ASSESSMENT AND INPUT ON PRELIMINARY RECOMMENDATIONS

- » Needs assessment summary
- » Public input summary

### COMMUNITY MEETINGS APPROACH

We suggest holding meetings over 2 evenings or on a Saturday and staggering the times so that those interested in more than one park can attend multiple meetings. For instance in one evening we may hold simultaneous but separate, open houses for Piedmont and Fond du Lac from 5:00-6:30 followed by open houses for Blackmer and Harrison from 6:30-8:00. Each meeting will be located in or near the park and be facilitated by 2-3 staff (combination of City Staff and consultants).

## Public Involvement & Communication

HKGi is known for its thoughtful and effective approach at engaging the public in planning projects. Over the past 30 years, HKGi has crafted a variety of public input/involvement techniques designed to involve a wide variety of individuals, interest groups and citizen organizations.

There are no off-the-shelf public involvement and communications programs that will precisely work for every community. Instead, HKGi structures specific communications and public involvement plans that fit the dynamics of both the project and the community. Knowledge gained in over two decades of meaningful community approaches is used to craft appropriate options.





TASK 3 SUMMARY
<b>Meetings</b>
<u>TRIP #4</u>
» Staff Advisory Committee Meeting #3 (Draft Mini-Master Plan)
<u>TRIP #4a (Optional)</u>
» Second Round of Community Meetings or Follow –Up Stakeholder Meetings (additional service)
<u>TRIP #5</u>
» City Council Meeting (Final Approval)
<b>Deliverables</b>
» Draft Mini-Master Plans
» On-line Input Summary
» Summary Presentation
» Meeting Summaries
» Final Mini-Master Plans
<b>City Staff Responsibilities</b>
» Staff Advisory Committee Meeting Coordination and Notification
» Final Presentations to Stakeholder and Community Groups
» Present Draft Plan to Parks and Recreation Commission

Phase 3: Mini Master Plans and Approvals

(December – March)

Task 3 centers on translating the needs and public input into a mini-master plan for each park. We will begin by developing a draft mini-master plan graphic and written summary for each park along with capital and maintenance costs and preliminary priorities. We will review these with City staff and ask staff to present these plans to the community groups. We will also provide an opportunity for on-line input on the plans and priorities. Based on input, we will develop a final mini master plan package for each park that will and include the park inventory, site analysis, needs assessment, park improvements and reinvestment, access and connectivity recommendations, natural resource management, capital and maintenance cost estimates. An introduction summarizing the project purpose, context, and process will accompany the mini-master plans. We ask that City staff review the mini-master plans with the Parks and Recreation Commission. The HKGi team will make refinements before presenting the final mini-master plans to the City Council for approval. Specific sub-tasks include:

TASK 3.1 DEVELOP DRAFT MINI-MASTER PLANS

- » Park elements (fields, courts, buildings, play areas, etc.)
- » Park site features (parking, lighting, storm water, signage, landscaping, circulation)
- » Phasing and priority initiatives
- » Capital cost estimates
- » Maintenance costs and asset management

TASK 3.2 STAFF ADVISORY COMMITTEE MEETING #3 – TRIP #4

- » Review draft mini-master plans

TASK 3.3 PREPARE SUMMARY PRESENTATION

- » For staff use in community review

TASK 3.3A ADDITIONAL COMMUNITY MEETINGS (OPTIONAL)

- » As an optional, additional service, we will conduct a second round of community meetings or follow-up meetings with key stakeholders

TASK 3.4 ON-LINE INPUT

- » Post mini-master plans on the City’s website with the opportunity for public input

TASK 3.5 REFINE DRAFT MINI-MASTER PLANS BASED ON STAFF AND COMMUNITY REVIEW

TASK 3.6 PARKS AND RECREATION COMMISSION REVIEW


- » We ask that staff present the draft mini-master plans to the Parks and Recreation Commission

TASK 3.7 REFINE DRAFT MINI-MASTER PLANS BASED ON PARKS AND RECREATION COMMISSION INPUT

TASK 3.8 CITY COUNCIL MEETING (APPROVAL OF MINI-MASTER PLANS) – TRIP #5

TASK 3.9 DELIVER FINAL MINI-MASTER PLANS



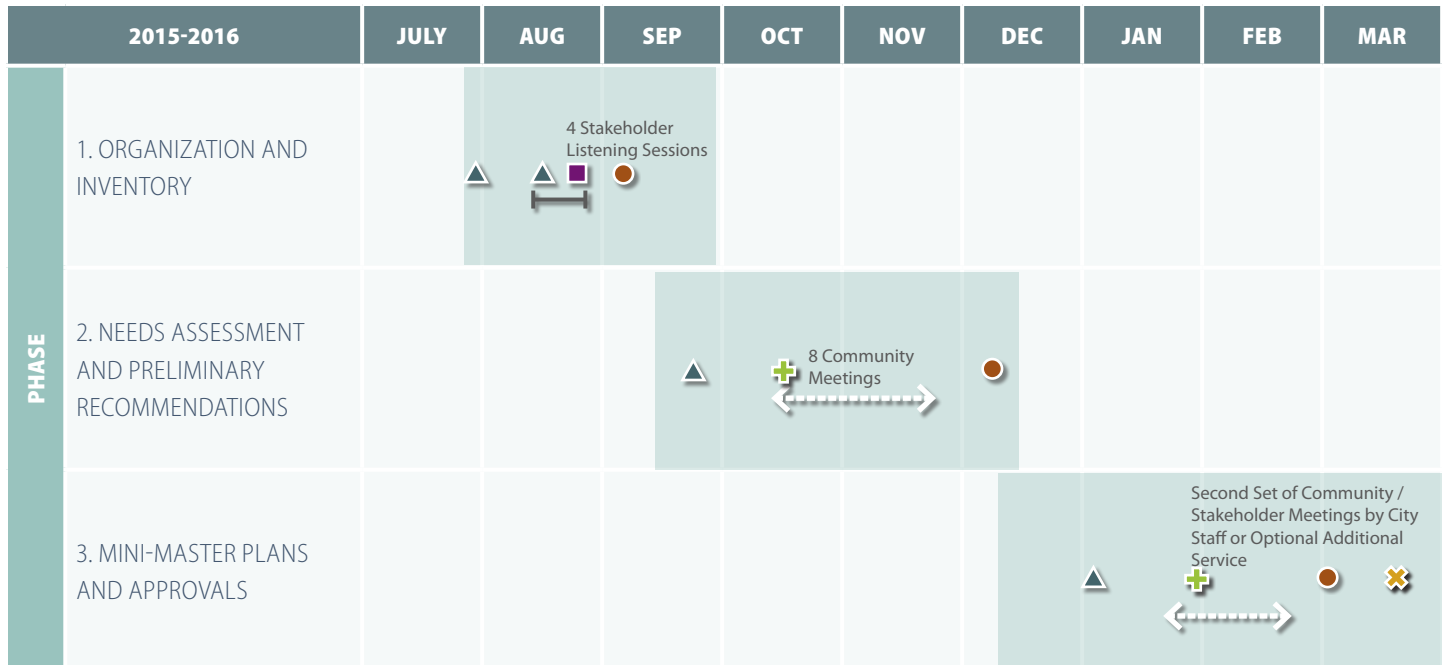


HKGI PROJECT WORK:  
RICE MARSH LAKE PARK TRAIL  
CHANHASSEN, MN

# 05 • SCHEDULE, ADDENDUM #1, FEE PROPOSAL, & REFERENCES



## Project Schedule




### MEETING + INPUT SUMMARY:

-  Staff Advisory Committee ..... 4 total
-  Park Inventory - Field Work ..... -
-  Stakeholder Listening Sessions.....4 total
-  Community Meetings.....8 total
-  Online Input.....2 Opportunities
-  Parks and Recreation Board (City Staff) , 3 total
-  City Council Approval.....-

## Receipt of Addendum

Addendum I: Updated June 12, 2015



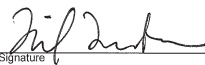
**CITY OF DULUTH**  
 PURCHASING DIVISION  
 Room 100 City Hall  
 411 West First Street  
 Duluth, Minnesota 55802-1199  
 218/730-5340 218/730-5922 FAX  
[purchasing@duluthmn.gov](mailto:purchasing@duluthmn.gov)

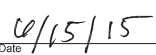
**Addendum #1**  
**File #15-0419**  
**RFP - Mini Master Plans for Various City Parks**

This addendum serves to notify all bidders of the following changes to the solicitation documents:

1) Responses to submitted questions are attached.

Please acknowledge receipt of this Addendum by signing, dating, and submitting a copy with your bid/proposal. Thank you.

  
 Signature

  
 Date



## Fees

Task	Task Description	Total Fee & Expenses
1.0	Organization and Inventory	\$18,600
2.0	Recreation Needs Assessment and Preliminary Recommendations	\$20,200
3.0	Mini-Master Plans and Approvals	\$17,700
	<b>Subtotal</b>	<b>\$56,500</b>
	<b>Expenses</b>	<b>\$3,200</b>
	<b>TOTAL BASE FEE</b>	<b>\$59,700</b>
<b>Contingency Parks (including expenses)</b>		
	Historical Park	\$4,300
	Smithville Park	\$5,500
	Grassy Point	\$5,500
	<b>Total with Contingency Parks</b>	<b>\$75,000</b>
<b>Optional Additional Services</b>		
	Phase III Community Meetings (Set of 8)	\$9,500
	Parks and Recreation Commission Meeting (per meeting)	\$1,500
	Additional staff, stakeholder, and community meetings (Estimate including meeting prep, travel, and expenses. Cost dependent on meeting complexity and need for travel.)	\$1,000-\$5,000

## References

### Todd Hoffman

Parks and Recreation Director  
City of Chanhassen  
(952) 227.1129  
thoffman@ci.chanhassen.mn.su

### Jennifer Ringold

Manager of Public Engagement and Citywide Planning  
Minneapolis Park and Recreation Board  
(612) 661-4864  
JRingold@minneapolis.parks.org

### Steve Sadler

Public Works Director  
City of Hopkins  
(952) 548-6350  
SjStadler@hopkinsmn.com

### Randy Distad

Parks and Recreation Director  
City of Farmington  
(651) 280.6851  
RDistad@ci.farmington.mn.us





HKGI PROJECT WORK:  
VILLAGE CREEK PARK  
BROOKLYN PARK, MN

# 06. QUALIFICATIONS



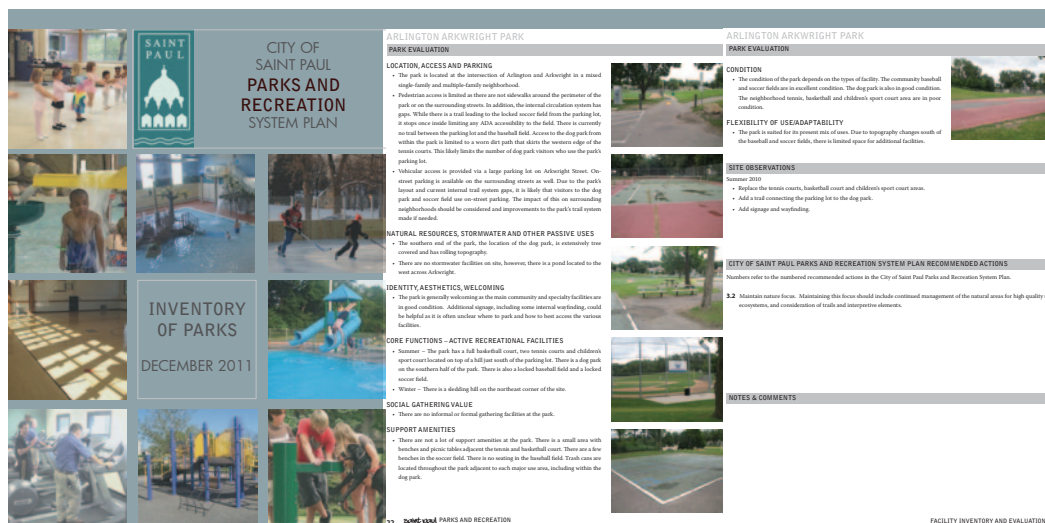
# Qualifications

The HKGi Team brings the following important qualifications to the St. Louis River Corridor Neighborhood Parks Mini-Master Planning Process:

- » Ability to understand the role of each park within the context of the St. Louis River Corridor and the City through our work on the city-wide Parks and Recreation Master Plan, Trail and Bikeway Plan, St. Louis River Corridor Visioning Workshop, and seven St. Louis River Corridor mini master plans
- » Familiarity with the parks through our work on the award winning Duluth Parks and Recreation Master Plan
- » Extensive experience in neighborhood park design and park revitalization through our neighborhood scale park planning, design, and construction projects in Chanhassen, Farmington, Brooklyn Park, Edina, Minneapolis, and others
- » A solid reputation for consensus building through creative and effective public input processes
- » Award-winning and creative park planning and design
- » Experience inventorying, assessing, and making strategic recommendations for parks. We have completed park inventory and assessments for all parks in the cities of Bloomington, Worthington, Chanhassen, and Saint Paul
- » Accurate and informed cost estimation for planning, design and construction projects
- » Expertise in natural and water resource management



LEVIN PARK  
MINNEAPOLIS, MN  
HKGi PROJECT WORK



## 2010 SAINT PAUL PARK SYSTEM INVENTORY AND EVALUATION

In the summer of 2010, HKGi completed an inventory and assessment for all 150+ parks in the City of Saint Paul. The inventory includes park history, location information, demographics, and a list of recreation facilities and user conveniences/support facilities. It is intended to help guide future improvements and assist with asset management. For each park, recommendations that support the City's Park System Plan goals and known needs for facility replacement are noted. For Recreation Centers and Neighborhood parks, details about the recreation facilities, recreation center buildings, and an evaluation of the condition of all buildings and facilities is included. As part of the process, HKGi developed a standardized evaluation and inventory template that can now be updated by City Staff as improvements are made and facilities change.





HKGI PROJECT WORK:  
VICTORY PARK  
MINNEAPOLIS, MN

# 07 • RESUMES



## Lillian Leatham PLA

Associate, Landscape Architect



p: (612) 252.7127  
e: lil@hkgi.com  
Years of Experience: 15

### EDUCATION:

Masters of Landscape Architecture,  
University of Minnesota  
Bachelors of Arts, Political Science,  
Emory University, Georgia

### REGISTRATION:

Landscape Architect, Minnesota  
License No. 42512

### MEMBERSHIPS/AFFILIATIONS:

American Society of Landscape  
Architects  
2012-14 ASLA- MN Chapter - Exec.  
Committee  
Association of Pedestrian and Bicycle  
Professionals (APBP)

### AREAS OF EXPERTISE:

Lil Leatham, an Associate at HKGi and a registered landscape architect, brings expertise in parks, trails, bikeways, and open space planning and design. Her award-winning work integrates recreation and natural resource protection to create memorable public places, and she brings more than 15 years of planning experience to her role as project manager. As a public engagement facilitator Lil is skilled at integrating community input with planning and landscape architecture best practices.

Lil's project experience includes providing planning and design leadership on a wide range of parks planning projects. Her leadership has been essential in building an innovative greenway network in Dakota County and her skills have been important to the success of planning projects for cities, counties, townships and private developers throughout the state of Minnesota.

### RELEVANT PROJECT EXPERIENCE:

#### Park Planning:

- » Big Ole/Central Park and Lake Connie Park Master Plans | Alexandria, MN
- » Northeast Park Master Plan | Minneapolis, MN
- » Hartkopf Park Master Plan | Brooklyn Park, MN
- » Henry's Woods Park Master Plan | Hassan Township, MN
- » Benson Park Master Plan | North Mankato, MN
- » Park and Trail Planning and Design (multiple projects) | Chanhassen, MN
- » Farmington Park Planning | Farmington, MN

#### Duluth Area Project Work

- » Tallas Island Concept Plan | Duluth, MN
- » Park and Recreation System Master Plan | Duluth, MN
- » Trail and Bikeway Master Plan | Duluth, MN
- » St. Louis River Corridor Visioning Workshop | Duluth, MN
- » Sports Corridor Mini-Master Plan | Duluth, MN
- » Fairmount Park Mini-Master Plan | Duluth, MN
- » Proctor-Hermantown Munger Trail Spur Connector Trail | Hermantown, MN

#### Parks and Recreation Master Planning:

- » Parks and Open Space Master Plan | Mankato, MN
- » Parks System Plan | Maplewood, MN
- » Nokomis-Hiawatha Park Master Plan | Minneapolis, MN
- » Park, Trail and Open Space Plan | Three Rivers Park District, Hennepin Co, MN
- » Park and Recreation Plan | Bloomington, MN
- » Hyland Bush Anderson Regional Park Master Plan | Bloomington, MN
- » Regional and County Park and Reserve Master Plans (multiple parks) | Dakota Co, MN
- » Parks and Recreation Master Plan | Elk River, MN



**Bryan Harjes** PLA, LEED AP  
Vice President, Principal



p: (612) 252.7124  
e: bryan@hkgi.com  
Years of Experience: 15

**Education:**  
Masters of Landscape Architecture,  
University of Minnesota  
  
Bachelors of Environmental Design,  
University of Minnesota

**Registration:**  
Landscape Architect, Minnesota  
Licence No. 42954

**Memberships/Affiliations:**  
Urban Land Institute (ULI)  
Sensible Land Use Coalition (SLUC)  
Minnesota Design Team (Houston,  
MN)

**AREAS OF EXPERTISE:**

Bryan’s park planning and design experience includes work for both the public and private sectors. He has developed master plans, site designs, and design concepts for a range of neighborhood parks, public plazas, trail networks, and open space amenities for communities throughout the state. Bryan’s park planning and design work addresses the community’s needs for facilities and programming while remaining sensitive to the landscape. His work is forward-thinking but is also based on sound, industry-proven best practices, a combination that results in natural resource-based designs that are both ecologically and economically sustainable.

Bryan’s most recent park planning and design work includes a variety of projects in Duluth that address issues of park development, trail connectivity, visioning, and recreational enhancement. Bryan has also played significant roles on two award-winning projects: the Great River Passage project in Saint Paul, and the River Flats in Hastings, Minnesota. The Great River Passage documents strategies for 17 miles of regional parks and open space along the Mississippi River. The River Flats project features ecological restoration and preservation, large scale interpretive art installations, community gathering space, and festival grounds on an abandoned industrial site along the Mississippi River.

**RELEVANT PROJECT EXPERIENCE:**

**Park Planning:**

- » 54th Street Play Area Improvements | Minneapolis, MN
- » Northeast Park Master Plan | Minneapolis, MN
- » Roadside Park Master Plan | Hastings, MN
- » Wallin Park Master Plan | Hastings, MN

**Duluth Area Project Work**

- » St. Louis River Corridor Visioning Workshop | Duluth, MN
- » Sports Corridor Mini-Master Plan | Duluth, MN
- » Fairmount Park/ Lake Superior Zoo Visioning | Duluth, MN
- » Tallas Island Concept Plan | Duluth, MN

**Park and Nature Center Master Planning and Design:**

- » Minneapolis Sculpture Garden Renovation | Minneapolis, MN
- » Springbrook Nature Center Master Plan | Fridley, MN
- » Tamarack Nature Center Master Plan | Ramsey County, MN
- » Minnehaha Park Refectory Site Plan | Minneapolis, MN
- » Nokomis-Hiawatha Regional Park Master Plan | Minneapolis, MN
- » Islands of Peace Park Concept Plan | Fridley, MN
- » Hastings River Flats and Interpretive Center Master Plan | Hastings, MN
- » Downtown & Levee Park Master Plan | Hastings, MN
- » MMPA Energy Park Master Plan and Site Design | Faribault, MN
- » UMore Park Athletic Facilities | Rosemount, MN



## Gabrielle Grinde, PLA

Landscape Architect



p: (612) 252.7141  
e: gabrielle@hkgi.com  
Years of Experience: 6

### Education:

Masters of Landscape Architecture,  
University of Minnesota- Twin Cities

Port Cities Study Abroad: Lisbon,  
Barcelona, and Venice, University of  
Minnesota Twin Cities

Bachelors of Arts- Political Science,  
University of Wisconsin- Madison

### Registration:

Landscape Architect, Minnesota  
License No. 50416

### Memberships/Affiliations:

American Society of Landscape  
Architects- Minnesota Chapter

### Awards:

2012 Honor Award for  
Communications, Metropolitan  
Council Stormwater Reuse Guide,  
ASLA-MN  
2012 Merit Award for Planning,  
Dakota County Greenways:  
Minnesota River and North Creek,  
ASLA-MN

### AREAS OF EXPERTISE:

Gabrielle's range of experience includes working with communities on large scale planning efforts to small scale site improvements. At HKGi, she contributes to park and trail planning, conceptual development planning, document layout, and site design as a project landscape architect and project planner. Gabrielle combines graphic design and analysis skills to create award-winning and clear planning tools for communities. She has worked on a wide variety of projects, including landscape restoration and stormwater related landscape designs, greenway plans, community development plans, and interactive online planning tools. Her former work for a county Conservation District and a Twin Cities suburb included trail design, lakeshore restoration design, construction oversight, and park planning.

### RELEVANT PROJECT EXPERIENCE:

#### Park Planning:

- » Northeast Park Master Plan | Minneapolis, MN
- » Countryside Park Master Plan & Construction Documents | Edina, MN
- » Lakeview Neighborhood Park Concept Plan | Chanhassen, MN
- » Hartkopf Park Master Plan | Brooklyn Park, MN
- » Neighborhood Raingardens | Chanhassen, MN

#### Duluth Area Project Work

- » St. Louis River Corridor Vision | Duluth, MN
- » Trail and Bikeway Plan | Duluth, MN
- » Fairmount Park Mini-Master Plan | Duluth, MN
- » Tallas Island Concept Plan | Duluth, MN
- » Park and Recreation System Master Plan | Duluth, MN
- » Proctor-Hermantown Munger Trail Spur Connector Trail | Hermantown, MN

#### Park and Nature Center Master Planning and Design:

- » Above the Falls Master Plan | Minneapolis, MN
- » Park Features Cost Estimating | Minneapolis Park and Recreation Board
- » Tamarack Nature Center Master Plan | Ramsey County, MN
- » Minnehaha Park Refectory Site Plan | Minneapolis, MN
- » Park and Recreation System Master Plan | Saint Paul, MN
- » Recreation and Parks Master Plan | Brooklyn Park, MN
- » Park and Recreation System Master Plan | Inver Grove Heights, MN
- » Great River Passage Master Plan | Saint Paul, MN
- » Lebanon Hills Regional Park Master Plan | Dakota County, MN



Anna Springer

Graduate Landscape Architect



p: (612) 252.7136  
e: anna@hkgi.com  
Years of Experience: 3

EDUCATION:

Master of Landscape Architecture,  
University of Minnesota

Study Abroad-University of North  
London

Bachelor of Science, Forestry with an  
Emphasis in Urban Forestry,  
-University of Wisconsin-Stevens  
Point

MEMBERSHIPS/ AFFILIATIONS:

American Society of Landscape  
Architects

Women in Landscape Architecture

International Society of Arboriculture

Minnesota Society of Arboriculture

AREAS OF EXPERTISE:

Anna focuses on graphic design and visual communications, as well as project research and GIS mapping. A recent graduate from the University of Minnesota, Anna’s capstone project explored the application of various landscape strategies to address short and long term resiliency in the oil boom town of Williston, ND. Her interests include rural design, regional and local trail development, and community engagement. She also enjoys combining her knowledge of design, arboriculture and urban forestry, and was able to do so as a volunteer designer for a Pop-Up Tree Park in an area of St. Paul with the city’s lowest tree canopy coverage. As a former owner and operator of a tree care company, Anna also brings an understanding and appreciation of client relationships and small business operations.

RELEVANT PROJECT EXPERIENCE:

Park Planning:

- » Northeast Park Master Plan | Minneapolis, MN
- » Hoffman Park Master Plan | River Falls, WI
- » Glen Park Master Plan | River Falls, WI
- » 54th Street Park Improvements | Minneapolis, MN

Duluth Area Project Work

- » West Duluth Sports Corridor Mini Master Plan | Duluth, MN

Park and Nature Center Master Planning and Design:

- » Wargo Nature Center Master Plan | Anoka County, MN
- » Lebanon Hills Regional Park Master Plan | Dakota County, MN
- » Nokomis Hiawatha Regional Park Master Plan | Minneapolis, MN
- » Park and Recreation System Master Plan | Maplewood, MN
- » Park and Open Space Master Plan | Livonia Township, MN
- » Park and Recreation Reinvestment Plan | Hopkins, MN



## Kevin Clarke

Graduate Planner and Landscape Architect



p: (612) 252.7133

e: kevin@hkgi.com

Years of Experience: 3

### EDUCATION:

Masters of Landscape Architecture,  
University of Minnesota

Masters of Urban and Regional  
Planning, University of Minnesota

Bachelors of Arts, Economics,  
Saint John's University

### MEMBERSHIPS/ AFFILIATIONS:

American Planning Association

American Society of Landscape  
Architects

The Starling Project

Minnesota Design Team

McCarthy Center for Public Policy and  
Civic Engagement

Urban Land Institute - Young Leaders

### AREAS OF EXPERTISE:

Kevin is a community planner and landscape architect in training. At HKGi, he has been especially involved with park and recreation planning, contributing to system master plans, individual park master plans, trail and bikeway plans, and athletic facilities plans. He has also participated in community comprehensive planning, neighborhood planning, land use analysis, and site design projects. Kevin's work at HKGi has focused on GIS mapping, conditions analysis, plan writing, and public engagement, and he has provided support for concept planning, design, and visual communication.

Kevin has also been involved with volunteer community planning efforts including the Minnesota Design Team and the Starling Project, an effort to enliven and sustain University Avenue in St. Paul, MN during the light rail construction process by supporting temporary uses in vacant storefronts. While at The Jens Jensen Center and The Clearing in Door County, Wisconsin, Kevin preserved and restored historic landscapes. He also brings construction experience from multiple urban infill projects in Portland, Oregon.

### RELEVANT PROJECT EXPERIENCE:

#### Park Planning:

- » Camden Ridge Park Plan | Chanhassen, MN
- » Northeast Park Master Plan | Minneapolis, MN
- » Hoffman Park Master Plan | River Falls, WI
- » Glen Park Master Plan | River Falls, WI

#### Duluth Area Project Work

- » Sports Corridor Mini-Master Plan | Duluth, MN
- » Mission Creek and Magney Snively Trail Planning | Duluth, MN
- » Flood Recovery Parks Planning | Duluth, MN
- » Fairmont Park/ Lake Superior Zoo Visioning | Duluth, MN
- » Fairmont Park Mini-Master Plan | Duluth, MN
- » Proctor-Hermantown Munger Trail Spur Connector Trail | Hermantown, MN

#### Parks and Recreation Planning and Design:

- » Parks and Recreation Master Plan | Elk River, MN
- » Greenfield Central Park Master Plan | Greenfield, MN
- » Park System Reinvestment Plan | Hopkins, MN
- » Parks and Recreation System Plan | Inver Grove Heights, MN
- » Parks, Trails, and Bikeways Master Plan | Douglas County, MN

#### Athletic Facility Planning and Design:

- » Spectrum High School Athletic Facilities | Elk River, MN
- » Athletic Facility Needs Study | Woodbury, MN
- » Athletic Facilities Master Plan | Worthington, MN
- » Athletic Facility Needs Assessment | White Bear Lake, MN



Amy Bower, PLA  
Landscape Architect



p: (612) 252.7121  
e: amy@hkgi.com  
Years of Experience: 18

**EDUCATION:**  
Masters of Landscape Architecture -  
University of Minnesota  
Bachelor of Science, Industrial Design  
- University of Wisconsin-Stout

**REGISTRATION:**  
Landscape Architect, Minnesota  
License No. 41472

**AREAS OF EXPERTISE:**

Amy’s experience includes neighborhood and community park master plans, site master plans, and streetscape design projects. Amy has developed a variety of award winning streetscape and park designs for downtown and commercial areas, including work on the Lock and Dam Road Streetscape in Hastings, and the Central Avenue Streetscape in Osseo. She has also played a significant role in the development of the France Avenue/ Old Shakopee Road Redevelopment and Streetscape in Bloomington, a project addressing redevelopment, traffic flow, environmental and aesthetic needs in a highly utilized, but aging commercial intersection. Amy’s expertise in transforming project designs into built products through construction documentation and construction administration result in happy clients and successful & enduring projects.

**RELEVANT PROJECT EXPERIENCE:**

**Park Planning & Design:**

- » 54th Street Park Improvements | Minneapolis, MN
- » Big Ole/ Central Park Master Plan | Alexandria, MN
- » Lake Connie Park Master Plan | Alexandria, MN
- » Countryside Park and Ballfield Improvements | Edina, MN
- » Town Square Park Concepts | Blaine, MN
- » Farmington Park Planning | Farmington, MN
- » Pocket Park Design and Construction Administration | Bloomington, MN
- » Village Creek and Arbor Plaza | Brooklyn Park, MN
- » Andrews Park Improvements | Champlin, MN
- » Park Plans, Designs, and Construction Admin | Chanhassen, MN
- » Neighborhood Park Initiative | Chanhassen, MN
- » Forest School Athletic Fields | Crystal, MN
- » Lyndale Elementary Playground Improvements | Minneapolis, MN
- » Veteran’s Memorial Park Master Plan | Mound, MN
- » Bridge Square Downtown Park Plan | Northfield, MN
- » Horseshoe Lake Park Concept Design and Site Plan | Rosemount, MN
- » UMore Park Athletic Complex | Rosemount, MN
- » Brookview Park Playground Improvements | Golden Valley, MN
- » Pioneer Park Plan | Hastings, MN

**Park and Nature Center Master Planning and Design:**

- » Lebanon Hills Regional Park Master Plan | Dakota County, MN
- » Nokomis Hiawatha Regional Park Master Plan | Minneapolis, MN
- » Park and Recreation System Master Plan | Maplewood, MN
- » Park and Open Space Master Plan | Livonia Township, MN
- » Park and Recreation Reinvestment Plan | Hopkins, MN
- » Park and Open Space Master Plan | Mankato, MN



## Derek Lash, PE, CPESC

Civil Engineer



e: DLash@EORinc.com

Years of Experience: 18

### EDUCATION:

Bachelor of Science- Civil  
Engineering, Michigan Tech  
University

### MEMBERSHIPS/ AFFILIATIONS:

MN Erosion Control Association  
  
American Council of Engineering  
Companies  
  
Certified SWPPP's Designer

### PROFESSIONAL REGISTRATION:

MN Professional Engineer: Civil  
#45156

### AREAS OF EXPERTISE:

Derek Lash is a Civil Engineer and Erosion Control Specialist with 18 years experience in the design, documentation, and management of civil engineering projects including transportation, low impact development design, stormwater management, and Derek's strong background in geotechnical engineering, erosion control, and wetland ecology provide a depth of knowledge to EOR's multiple engineering, site design, water quality, and ecorestoration projects.

As a project manager, Derek has served as a representative for several projects ranging in scale from local neighborhood-based efforts to watershed-wide initiatives, including federally funded and regulated projects as well.

### RELEVANT PROJECT EXPERIENCE:

#### Stormwater Management, Modeling, and Design:

- » Expansion Boulevard Stormwater Improvements | Storm Lake, IA  
Responsible for a pre-design feasibility study, current design, and future planning guidance for this part of the City which experiences frequent flooding. Developed concept plans, cost estimates, & incorporated multiple types of stormwater practices. BMPs include stormwater wetlands, biofiltration basins, grassed waterways & vegetated swales, all centered around the idea of using a 2-stage agricultural ditch that allows higher flows to be captured & treated in floodplain BMPs.
- » Swede Hollow Daylighted Stream Analysis & Feasibility Study | Saint Paul, MN  
Assisted with engineering analysis & conceptual designs for stormwater improvements. Study reviewed existing drainage infrastructure, including waterways (daylighted stream & ponds) and storm/sanitary sewer improvements from the 1800's up to present day. Analysis provided recommendations to manage pollutants & sediment loads; ecological & engineering stream design provided for improved aesthetics, water quality, pollutant removal, & wildlife habitat. Study to be used for funding requests required to implement recommendations.
- » Burandt Lake Reuse (Phase 1) | Carver County, MN  
Responsible for the design and admin. of bidding & construction for a 120" dia. steel reinforced HDPE water storage tank designed to capture stormwater runoff from an 8.8 ac. watershed of Burandt Lake. Collected water would come from the adjacent City streets, School District parking lot, and residential & commercial properties. The first phase was designed in conjunction with City street reconstruction, and would be engineered for future tank additions. Total project size when complete will be nearly 176,000 gal. with a value of over \$500,000.
- » Cleary Lake Regional Park Stormwater Improvements | Scott County, MN  
Responsibilities include managing all engineering work including the design & sizing of all infrastructure, cost estimating, H/H modeling and water quality analysis, and coordinating EOR's construction assistance activities. Project entails BMP retrofit integration with the park's other existing infrastructure.
- » Enhanced Iron Sand Filter | Stillwater, MN  
Provide engineering and design review for the retrofit of a pump station and iron enhanced sand filter within an existing residential neighborhood stormwater pond. Responsible for construction documents and coordinating with PM/engineer, and local utilities.

Jason Naber, WDC

Senior Partner Biologist



e: JNaber@EORinc.com  
Years of Experience: 26

EDUCATION:

Bachelor of Arts- Biology, St. John’s University

MEMBERSHIPS/ AFFILIATIONS:

- MN Wetland Professional Assoc.
- MN Herpetological Society
- Pheasants Forever & Ducks Unlimited
- Instructor for BWSR Lateral Effect Training Seminars
- Citizens Advisory Committee for Deer Creek/ Nemadji River TMDL
- Technical Advisor for the MN Drainage Manual Update
- Advisor for Metro State University/ss Science Masters Degree Program

PROFESSIONAL REGISTRATION:

Wetland Delineator Certified (WDC)

AREAS OF EXPERTISE:

Jason Naber has 26 years of experience in natural resource management and ecological restoration. He has been the project lead for several resource management plans, comprehensive wetland management plans, and project manager for several total maximum daily load (TMDL) studies.

Jason is very familiar with environmental permitting, review and documentation. Jason is an experienced project facilitator. He has excellent rapport with watershed districts, municipalities and agencies. An effective communicator, Jason frequently gives technical presentations & participates in educational seminars.

RELEVANT PROJECT EXPERIENCE:

Wetland Ecology and Planning:

- » Wetland Restoration Feasibility Study for Parley Lake | Minnehaha Creek Watershed District, MN  
Minnehaha Creek Watershed District. Project Manager. The restoration of headwaters wetland, upstream of a major urban and urbanizing watershed in the UMRB. Feasibility of a CWA Section 401 impaired waters TMDL implementation site was evaluated. Site restoration included reestablishment of an emergent fringe and wetland buffer for a prior-excavated wetland basin. Section 404 and WCA permitting was included along with water quality modeling. A wetland functional assessment was used to compare pre and post project functional scores to ensure no net loss of function.
- » Trout Habitat Preservation Project | Brown’s Creek Watershed District, MN  
The purpose of this project was to create wetland and infiltration feature in the upper reaches of Brown’s Creek which is a statedesignated trout stream. This project improved downstream trout habitat by providing thermal protection and water quality improvements. The project included the design of wetland restoration and infiltration basin features, project construction management, conducted routine inspections, and administered the construction contract.
- » Comprehensive Wetland Planning and SAMP | Lino Lakes, MN  
Within the Upper Mississippi River Basin, this work integrated wildlife and vegetation surveys, watershed hydrologic modeling, and wetland functional assessment for assigning priority and nonpriority wetlands as guidance in state and federal wetland regulatory programs. Public meetings for wetland values surveys and an ongoing state and federal coordination and approval process occurred for three distinct subwatersheds. Other applications of the work are for watershed-based TMDL investigations and implementation plans, and CWA NPDES permitting. The City of Lino Lakes portion of the study was recommended by the USEPA for development of a SAMP, which is in final stages of consideration by the USACE for use in Section 404 permitting.
- » Comprehensive Wetland Protection and Managment Plan | Prior Lake, MN  
This project was initiated to help the Prior Lake Spring Lake Watershed District identify wetland reestablishment, restoration and protection sites that help them enhance wetland functions, particularly improving water quality draining to their TMDL-listed lakes. The project included heavy participation by local agencies and public input.





GUIDING PRINCIPLES

OVERVIEW	MAIN ROLE	DESIGN PRINCIPLES	IMPLEMENTATION
The main guiding principle is to create a park that is a mix of different uses and activities, and that is a place where people can spend time and enjoy themselves.	The main role is to create a park that is a mix of different uses and activities, and that is a place where people can spend time and enjoy themselves.	The design principles are to create a park that is a mix of different uses and activities, and that is a place where people can spend time and enjoy themselves.	The implementation principles are to create a park that is a mix of different uses and activities, and that is a place where people can spend time and enjoy themselves.

NORTHEAST PARK

PRECEDENTS FOR 'DRAW-IN' FEATURES

NORTHEAST PARK

Build Your Own:  
**NORTHEAST PARK**

Rules:

- Create your ideal vision of Northeast Park.
- Try to get the most out of the space to do what you want.
- **Red lines in red must be followed for Northeast Park.**
- **Scenic features can be added to the park.**
- **You must have a 2' buffer zone.**
- **You must have a 2' buffer zone.**
- **You must have a 2' buffer zone.**

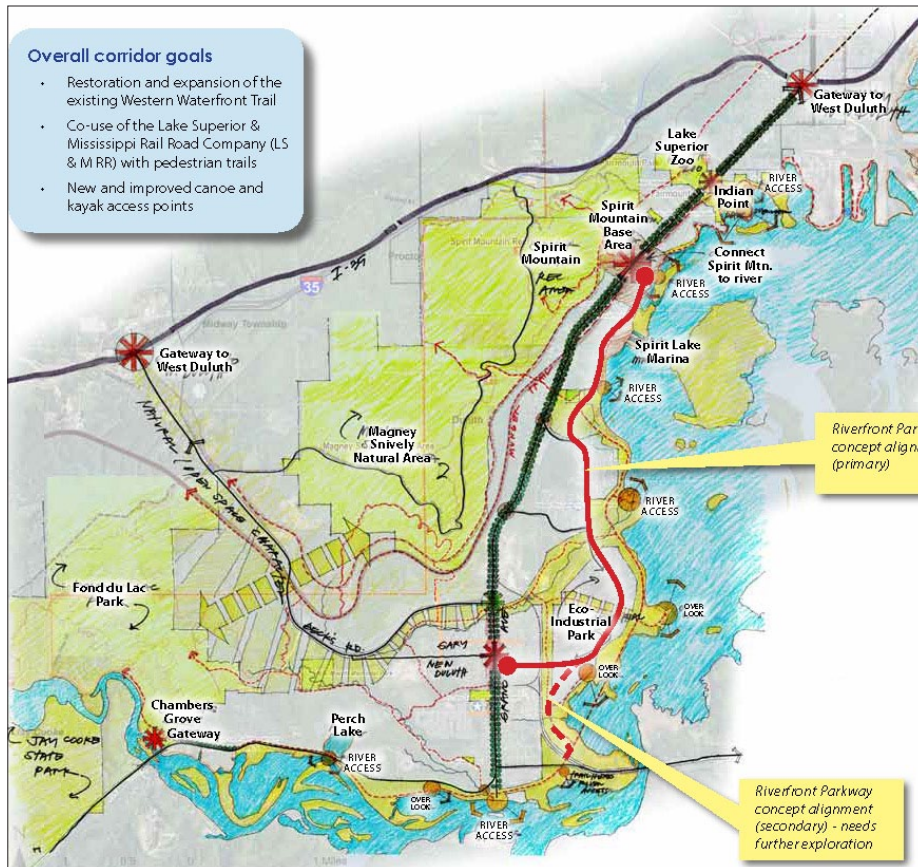
NORTHEAST PARK PLANNING  
MINNEAPOLIS, MN  
HKGI PROJECT WORK

# 08 • PROJECT EXPERIENCE



## St. Louis River Corridor Visioning Workshop

Duluth, Minnesota



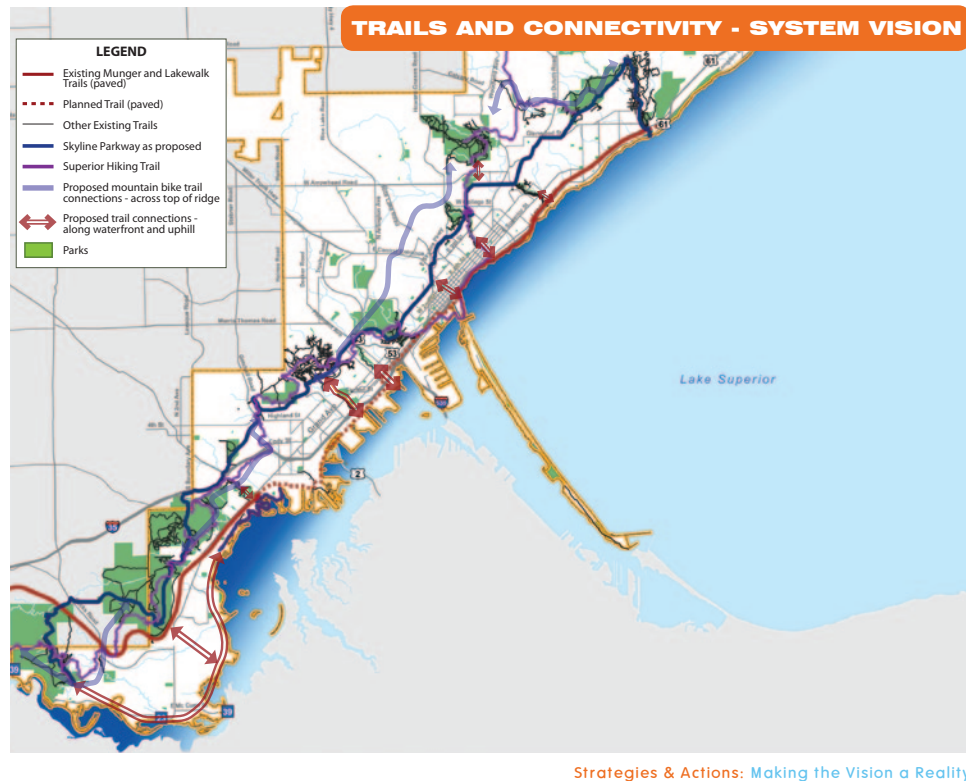
HKGi led this 2-day visioning workshop to help the City of Duluth illustrate and document a vision for the St. Louis River Corridor, including the Western Waterfront Trail, the Indian Point Campground, and the U.S. Steel waterfront property. This workshop was intended to develop a more detailed long term vision for improvements and to identify opportunities for providing river access within the corridor. The results of this workshop will allow the City to take swift action on specific short-term projects and will provide momentum for the City's effort to achieve its long term goal of transforming the corridor into a nationally significant environmental learning and outdoor recreation destination.

The workshop began with a listening session in which the Visioning Team, composed of local representatives, provided input regarding the corridor's character, landscape and opportunities for improving river access, connections, and use of specific sites. HKGi's planners and designers synthesized the Visioning Team's ideas into conceptual graphics for the overall corridor and for specific sites within the project area, which led to the establishment of overall goals and a vision framework for the corridor. The massive scale of the project area also allowed HKGi to explore ideas for several specific sites within the river corridor, which would allow the City to take swift action on specific short term projects and opportunities that can provide momentum for the City's effort to realize its long term goal.



## Parks and Recreation Master Plan

Duluth, Minnesota



The City of Duluth is blessed with a wonderful and extensive parks, recreation and open space system that is a defining element of the community. Like many cities, Duluth has experienced budget issues that have challenged the City's ability to maintain and improve the park and recreation system. HKGi was retained by the City to prepare a comprehensive master plan to help address some of those fiscal and operational challenges.

The planning process included conducting a system-wide facilities evaluation and developing an action plan to prioritize improvements. Plan recommendations include:

- » Improve the quality of existing parks (especially neighborhood parks),
- » Focus on connecting the community through trails and bikeways,
- » Have fewer, but higher quality recreation buildings,
- » Enhance stewardship of natural resources,
- » Expand partnerships with schools for community recreation and gathering,
- » Increase use and recognition of volunteers and volunteer groups, and
- » Create stable and sustainable funding sources to improve the park system.

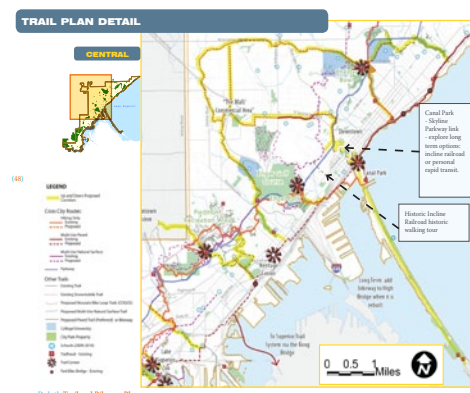
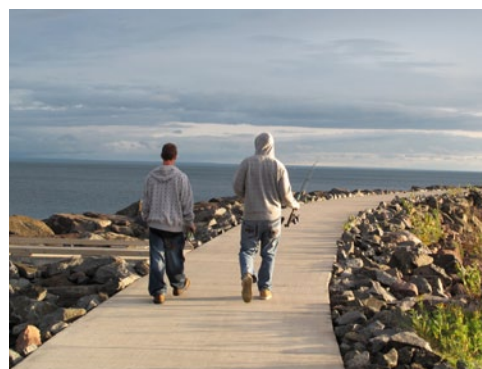
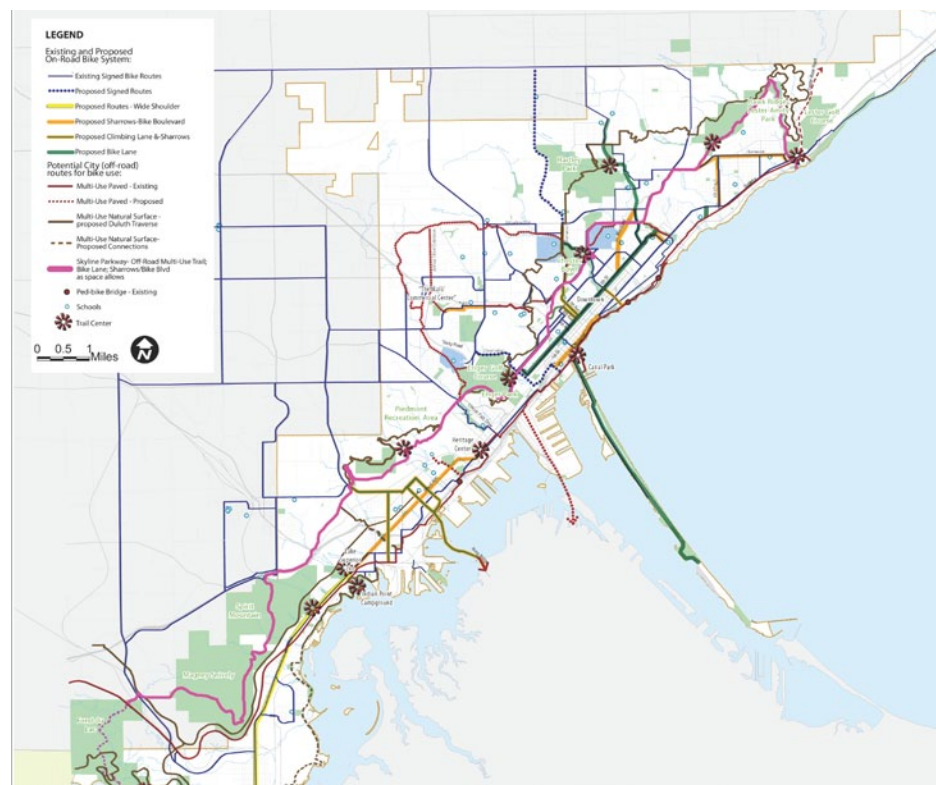
The planning process enjoyed significant public input with over 1,000 residents providing input. This public support helped the City establish a dedicated parks fund. Because it has been a catalyst for dozens of improvements to Duluth's park and recreation system since its initial passage, the Master Plan received a 2015 Merit Award for Analysis and Planning from the Minnesota chapter of the ASLA.

2015 Merit  
Award



## Trail and Bikeway Plan

Duluth, Minnesota



In 2011, the City of Duluth retained HKGi to create a Trail and Bikeway Plan to help the City achieve its goal of becoming the premier urban trail center in North America. Today Duluth features great trails, varied terrain, exceptional scenery and passionate outdoor-oriented people, but the current trail system lacks connections and there are few safe and convenient on-street bikeways or paved trails. The plan was designed to guide the City in the integration of its trails and bikeways into a comprehensive, connected and sustainable system serving residents, businesses and visitors.

Highlights of the Plan are:

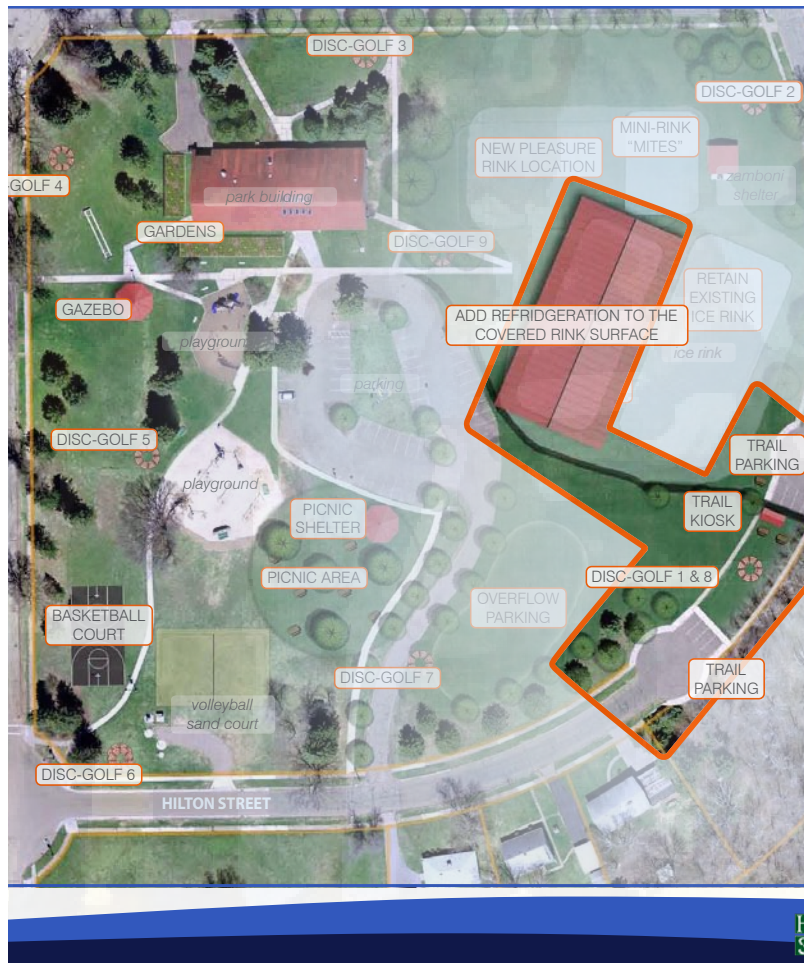
- » A city-wide network of off-road trails accommodating a full range of trail uses: mountain biking, multi-purpose paved trails for walking, biking and in-line skating, horseback riding, cross-country skiing, and snow shoeing
- » New trails connecting schools and underserved areas
- » Improvement of connections between the ridgeline and the lakeshore
- » New trailheads and way-finding signage
- » New on-road bike lanes, bike boulevards and bike routes that seamlessly connect with the off-road trail system.

The Trail and Bikeway Plan has provided the foundation for more detailed trail and bikeway planning efforts all across the City. The plan has enable Duluth to make significant progress towards achieving its vision.



## Gary New Duluth, Memorial Park, & Morgan Park Mini-Master Plans

Duluth, Minnesota



In 2012, HKGi completed mini master plans for three St. Louis River Corridor parks in Duluth: Morgan Park, Memorial Park, and Gary New Duluth Park. The three park sites are adjacent to public school sites and there was a need to coordinate school and park use to maximize public benefit and to implement the recommendation in both the Duluth Park and Recreation Master Plan and the School District's Long Range Facility Plan that parks and school facilities should work together to serve community needs.

The planning process for each of the mini-master plans was guided by a staff advisory committee and public input was gathered at community meetings. The resulting plans include a preferred master plan concept, cost estimate, and phasing to provide a guide to future park investment and coordination with school district facilities.

West Duluth Sports Corridor Mini-Master Plan

West Duluth, Minnesota



Category	SubCategory	Location	Description	Units	Unit	Unit Cost	Total Cost	Phase
Recreation Improvements	Softball	Wheeler	Upgrades Around Pinwheel Shelter	1	LS	\$ 50,000	\$ 50,000	1
Recreation Improvements	Softball	Wheeler	New Dugouts	2	EA	\$ 15,000	\$ 30,000	1
Recreation Improvements	Softball	Wheeler	Taller Fencing	500	LF	\$ 40	\$ 20,000	1
Recreation Improvements	Bocce	Wheeler	Maintain Bocce Courts	1	LS	\$ 8,000	\$ 8,000	1
Recreation Improvements	Baseball	Wheeler	Expand Field 5 to accommodate HSBB and BRBB	1	LS	\$ 200,000	\$ 200,000	1
Recreation Improvements	Tennis	Wheeler	Resurface Courts	2	EA	\$ 15,000	\$ 30,000	1
Recreation Improvements	Basketball	Wheeler	New Basketball Court	2	EA	\$ 20,000	\$ 40,000	1
Recreation Improvements	Skate	Wheeler	Skatepark Expansion	5000	SF	\$ 50	\$ 250,000	1
Recreation Improvements	Horseshoes	Wheeler	Build Horseshoes	4	EA	\$ 500	\$ 2,000	1
Recreation Improvements	Volleyball	Wheeler	Sand Volleyball Courts	2	EA	\$ 10,000	\$ 20,000	1
Recreation Improvements	Picnic	Wheeler	New Picnic Shelters	2	EA	\$ 30,000	\$ 60,000	1
Recreation Improvements	Baseball	Wade	Upgrade West Little League Field	1	EA	\$ 15,000	\$ 15,000	1
Recreation Improvements	Baseball	Wade	Upgrade East Little League Field	1	EA	\$ 15,000	\$ 15,000	1
Building Improvements	Softball	Wheeler	Upgrade Pinwheel Shelter Building	1	LS	\$ 50,000	\$ 50,000	1
Building Improvements	Softball	Wheeler	New Roof on Pinwheel Shelter Building	1	LS	\$ 10,000	\$ 10,000	1
Building Improvements	Baseball	Wade	Concessions and Storage for LLBB	1	LS	\$ 5,000	\$ 5,000	1
Building Improvements	Baseball	Wade	Water to Concessions for LLBB	1	LS	\$ 25,000	\$ 25,000	1
Circulation Improvements	Parking	Wade	Pave and Stripe right field parking lot	71	Spc	\$ 1,500	\$ 106,500	1
Circulation Improvements	Parking	Wade	Lighting in right field parking lot	6	EA	\$ 3,000	\$ 18,000	1
Circulation Improvements	Parking	Wade	Pave and Stripe Michigan St/Superior St parking lot	98	SF	\$ 1,500	\$ 147,000	1
Circulation Improvements	Parking	Wade	Lighting in Michigan St/Superior St parking lot	10	EA	\$ 3,000	\$ 30,000	1
Circulation Improvements	Trails	Wade	Trail Connection from Michigan St Lot to LLBB Fields	600	LF	\$ 60	\$ 36,000	1
Circulation Improvements	Wayfinding	Both	Signage and Wayfinding Improvements	1	LS	\$ 25,000	\$ 25,000	1
Other Improvements	Stormwater	Wheeler	Raingarden at Wheeler Entry	1	LS	\$ 50,000	\$ 50,000	1
Other Improvements	Stormwater	Wade	Raingarden at Michigan St Lot	1	LS	\$ 50,000	\$ 50,000	1
Other Improvements	Stormwater	Wade	Raingarden at Right Field Parking Lot	1	LS	\$ 50,000	\$ 50,000	1

The West Duluth Sports Corridor Mini Master Plan provides guidance for improvements over the next 10 years for two major recreational facilities, Wheeler Athletic Complex and Wade Stadium. The plan also provides a plan for stronger connections to Heritage Sports Center, Cross City Trail and surrounding parks with signage and wayfinding to help tie all the facilities together to create a cohesive district.

HKGi led a park planning and community engagement process engage stakeholders and residents about the future of the facilities, and what improvements were desired. The plan required a balance of new amenities and reinvestment in existing facilities with years of deferred maintenance, as well as functional upgrades to parking and concessions. With the identification of priorities and a phased approach for park revitalization, Wade Stadium and Wheeler Athletic Complex will continue to be one of the highly regarded baseball and softball tournament locations in Northern Minnesota.



## Andrews Park Master Plan

Champlin, Minnesota



Clyde Andrews Park is a popular and active 44-acre community park in Champlin. The park is a hub for community events and activities with a broad mix of active fields, picnic facilities, playgrounds, tennis courts, and a trail network. The park also hosts several regional youth baseball, adult softball, and youth soccer tournaments every year. The City retained HKGi to develop an overall park master plan to address evolving facility and infrastructure needs and to better match park improvement priorities with projected funding.

HKGi developed several concept scenarios in collaboration with City staff, refining them into a preferred master plan concept focused on a new splash pad at the heart of the park, a new concessions building with ADA restroom facilities, a new community-scale picnic shelter, renovation of the existing program/storage building, improved and expanded parking areas, and an improved trail system. HKGi worked with the City on implementation strategies and detailed cost estimates to ensure the plan ideas fit within the capital planning priorities of the City. HKGi also assisted City staff in securing \$220,000 in funding for the improvements through the Hennepin County Youth Sports Grant program in 2012.



## Park and Recreation Planning

Chanhassen, Minnesota



Hoisington Koeigler Group and its principals have been Chanhassen's park planners since 1977. Since that time, HKGi staff have completed two updates of the City's Comprehensive Recreation Plan, a detailed community-wide trail plan, and a system-wide inventory that assessed each park and identified improvement needs. All together, HKGi has completed master plans for 25 parks within Chanhassen, totaling approximately 500 acres.

In addition to master planning, HKGi has been responsible for the preparation of plans and specifications for park and recreational facilities including ball fields, tennis courts, playgrounds, hockey rinks, boat accesses, park signage, picnic shelters, paved trails, nature trails, parking lots, landscaping and irrigation systems. Most recently, a new stairway and hillside restoration were designed and installed on the edge of Lake Ann. Years of foot and bicycle traffic had degraded and worn away the top layer of soil on the slope, which was restored with structural stabilization and native planting material.

In the past, HKGi has assisted the City of Chanhassen with park funding, including the process of attaining a \$4.8 million bond referendum that was used to acquire park and open space land and make significant improvements to existing neighborhood and community parks.



## Countryside Park Master Plan

Edina, Minnesota



The Edina Countryside Park Master Plan sets forth a park plan that responds to the changing recreational trends and desires of today's residents. During the planning process, two concepts outlining varying degrees of change for the park, introducing new recreation uses in coordination with the preservation of the well-used and liked current park uses were explored. The plan supports cooperation with adjacent users, taking better advantage of the existing parking lot that is shared with the neighboring church. The concepts illustrates a trail loop system and a large open field space that will improve accessibility and provide increased recreational opportunity. Edina Countryside Park will embody environmental stewardship and learning and fulfill a desire for creative play for children. It is this infusion of values and amenities that will make Edina Countryside Park more relevant to the neighborhood residents.

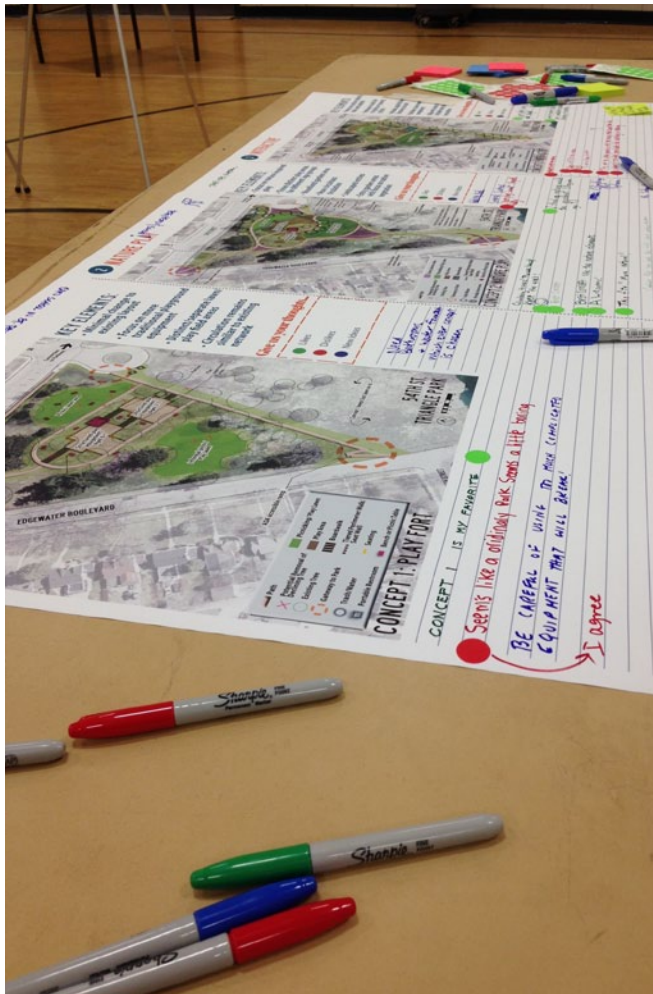
In 2014, HKGi worked with the City of Edina on detailed design and construction documents based on the master plan.



# PROJECT EXPERIENCE: HKGi

## 54th Street Playground

Minneapolis, Minnesota



In 2014 HKGi and EOR were hired by the Minneapolis Parks and Recreation Board (MPRB) to re-design 54th Street Play Area, a neighborhood park node at the edge of Nokomis-Hiawatha Regional Park. HKGi worked with a 15 member Community Advisory Committee through a series of three hands-on workshops to design a new concept for the park. The public also provided input on three alternative designs at a community open house and students from a nearby elementary school each drew images of their vision for the park. After a preferred concept was agreed upon, HKGi prepared final design and construction documents for the park. The park is currently under construction and expected to be complete in 2015.



## Levin Triangle Park Master Plan & Design

Minneapolis, Minnesota



HKGi worked collaboratively with MPRB staff and project stakeholders to develop a master plan and subsequent construction plans for Levin Triangle Park, a small park within the Minneapolis park system. The park is bordered by residential streets with high traffic demand making park safety a top priority for the improvements. The existing dated playground equipment did not meet current standards for accessibility and playground safety, thus a major objective of the project was focused on recommending improvements that provide safety, accessibility and diversity within the play environment.

The project incorporated substantial input from stakeholders including a series of public meetings and on-line surveys for community members to share their ideas and preferences. HKGi led the public participation process and coordinated design feedback from the community and park board staff. The final park design included a unique custom playground design, an open lawn area for community gatherings and picnics, and a shaded deck area for community gathering events.



# PROJECT EXPERIENCE: HKGi

## Hartkopf Neighborhood Park

Brooklyn Park, Minnesota



A great neighborhood park is a place where you meet and interact with your neighbors and feel welcome. While the City of Brooklyn Park has good neighborhood parks, they are all fairly similar in their facility offerings. The City's Recreation and Parks Master Plan determined that neighborhood parks should provide more relevant park amenities, should be designed to be more reflective of the community's cultural richness, and should foster a sense of neighborhood identity.

To achieve this, HKGi in partnership with the City of Brooklyn Park Recreation and Parks Department undertook a pilot project to engage neighborhood residents in preparing a Master Plan for Hartkopf Park.

During the spring of 2012, three community cafés were held to develop a master plan for the neighborhood park. The preferred plan is a long-term guide to park improvements that reflect resident desires as well as overall park system's needs. The overall planning effort was successful but the process engaged a relatively small number of participants (approximately 40 different residents over three meetings). Future efforts will employ additional methods to get residents involved, such as combining meetings with other neighborhood gatherings like National Night Out, or school programs.



## Valentine Park

Arden Hills, Minnesota



ARDEN HILLS **Valentine Park** Master Plan

Concept Plan 1

HKGi  
Henningson Krueger Group Inc.  
Parks • Landscapes • Streetscapes

HKGi developed a master plan for Valentine park in Arden Hills in order to effectively reduce or eliminate problematic flooding and drainage issues. The planning effort also targeted accessibility improvements and park facility upgrades.

HKGi prepared preliminary concepts and gathered input from the community through an open house and online survey before refining concepts into a preferred design plan. The master plan addresses drainage issues by introducing rainwater gardens and a stormwater retention pond at the edges of the park, which maximized space for recreational uses.

The improvements also include a trail system that promotes bike and pedestrian safety, an updated playground area with swings, a small shelter, a lawn area for recreational play, a small parking lot with potential pervious materials, a half basketball court, an informal tree play house, and a multitude of site amenities. HKGi also assisted with cost estimates and funding strategies.



# PROJECT EXPERIENCE: HKGi

## Village Creek Park and Arbor Plaza

Brooklyn Park, Minnesota



In 1998, the City of Brooklyn Park asked HKGi to develop park plans for two underutilized parcels of land abutting Shingle Creek. The project evolved through schematic design into a connected greenway that integrated the two parks, improved the stream and shoreline, and designed a creek side trail and crossing via a new pedestrian bridge.

Fronting Zane Ave and a key redevelopment area of the City, the eastern park space integrates a specially designed arbor to celebrate the gateway to the creek from Brooklyn Boulevard. The western section is a more passive park that invites leisurely strolling including an entrance garden planted with native prairie plants and flowering perennial species to welcomes visitors. Connecting the parks is a meandering series of trails, sited to minimize creek and tree disturbance while celebrating the natural features within the greenway.

As part of the project, HKGi worked collaboratively with Barr Engineering to develop a series of improvements to Shingle Creek. The creek improvements have provided more consistent creek flow, reduced erosion issues and sedimentation buildup, stabilized the shoreline, created natural habitat, and established a preservation plan for significant trees along the creek. The creek restoration combined with the greenway trail and park improvements have been instrumental in promoting additional redevelopment to the area.



## Park and Recreation Master Plan

Bloomington, Minnesota

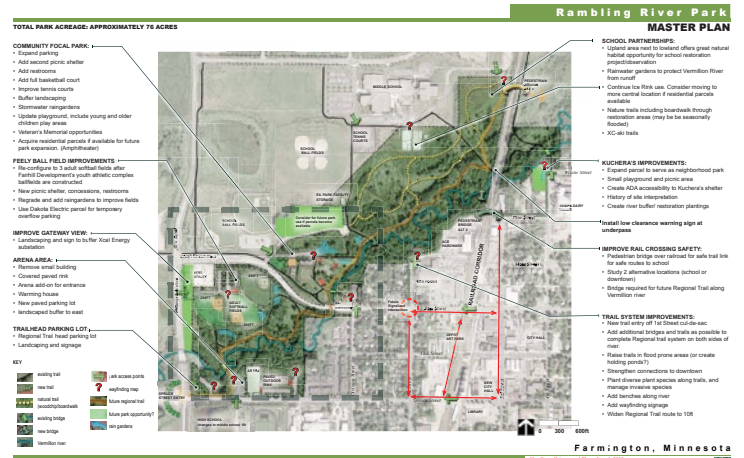


The City of Bloomington, Minnesota, a city of 87,000 located on the Minnesota River, hired HKGi in 2006 to prepare a master plan to guide the operation, redevelopment and funding of their extensive parks and recreation system. HKGi worked closely with city staff, a citizen's advisory task group, stakeholders and the public to prepare a strategic master plan to guide improvement of the park and recreation system through 2025.

Key elements of the planning process include an on-line community survey, a staff visioning workshop, focus group meetings, a partner meeting, peer city comparisons and use of service area standards. The plan includes strategies and actions for nine core topic areas, park improvement plans for key parks and a financial plan designed to increase fiscal sustainability and to implement plan recommendations. The Park and Recreation Plan was integrated with and builds on the Imagine Bloomington 2025, a city-wide strategic planning process. The Plan advocates a park re-positioning approach to create signature parks to serve districts within the city. Re-positioning will achieve several key goals – creating higher quality experiences and park facilities, providing community gathering places, focusing reinvestment and achieving an initial cost savings and long-term operating efficiencies. The Plan also recommends a Park Revitalization Program - regular funding for life-cycle park infrastructure replacement.

# PROJECT EXPERIENCE: HKGi

## Park Planning Farmington, Minnesota



HKGi has worked collaboratively with the citizens of Farmington and City staff for many years helping them determine the appropriate direction for changes in both new and existing parks. The process incorporates neighborhood stakeholders into the planning process through a series of interactive workshops and open houses in a proactive environment that uses their ideas as the foundation for plan alternatives. The result has been the development of master plans for over a dozen parks ranging in size from small neighborhood parks and art-based linear parks, to larger community scale parks with extensive athletic facilities, all of which have been well received by the public because they successfully integrated the ideas of the residents into the final master plans.

The master plans have also consistently been founded in and respected the existing natural systems of the land. The incorporation of native grasses in non-programmed spaces, rainwater gardens for storm water management, and interpretive signage related to ecological features have been successfully integrated into many of the plans.

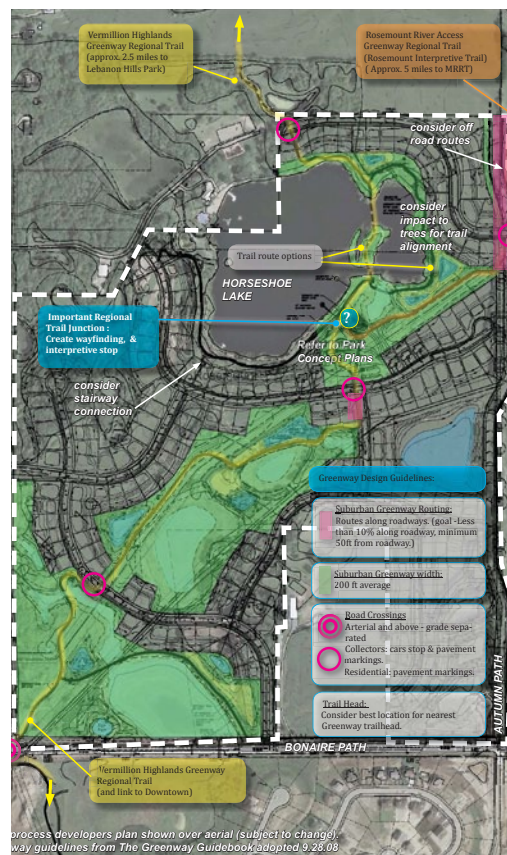
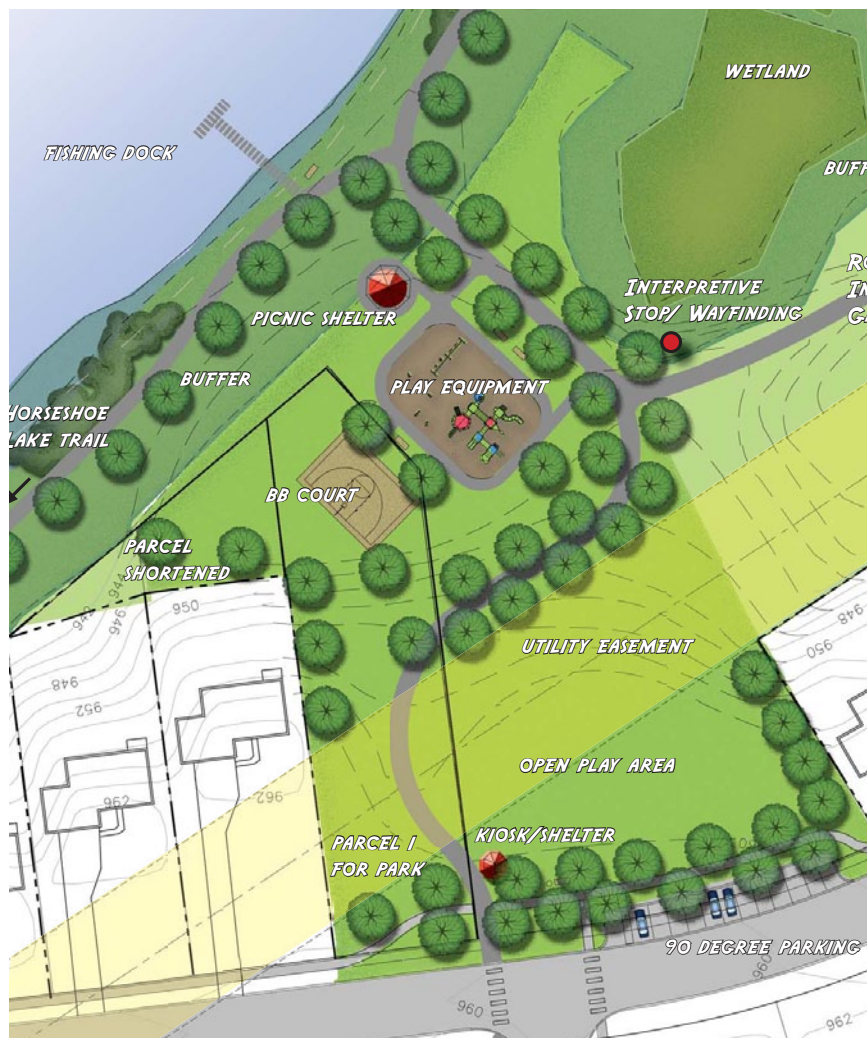






## Rosemount Horseshoe Park Master Plan

Rosemount, Minnesota



When a developer approached the City of Rosemount with plans for residential housing around Horseshoe Lake, the City needed help understanding how the plan would address the City's goal for a neighborhood park and two Dakota County Regional Greenway Trail Corridors.

HKGi reviewed the developer's layout and grading plan and made suggestions on how the plan should be adjusted to accommodate a desirable neighborhood park. HKGi developed two park site plan options that accommodated the city's desired park programming.

HKGi also reviewed how this site is included in two trail corridor plans. The Rosemount Interpretive Corridor Plan depicts this area as Segment 3, with an interpretive stop at Horse Shoe Lake. The Dakota County Trail plans indicate a corridor junction near Horse Shoe lake between the Rosemount River Access Greenway Regional Trail (aka Rosemount Interpretive Trail) and the Vermillion Highlands Greenway Regional Trail. HKGi consulted with the Dakota County Greenway Guidelines and created a site diagram issues map for the City staff to use for planning and negotiations.



## Park System Reinvestment Plan

Hopkins, Minnesota



HKGi is working with the City of Hopkins to prepare the Hopkins Park System Reinvestment Plan. The plan is a park-by-park identification of upcoming needs for the 18 parks across the system. Needs and related priorities were identified through on-site inventory and assessment, combined with input from stakeholders via open houses, online surveys, and commission and council work sessions. The data driven approach has informed the final plan, ensuring that future investments in the system are aligned with community priorities and needs.

As part of the process, three parks were selected as “focus parks” to receive additional site design work. During a day long, on-site design charrette, multiple concepts were developed for Central Park, Burnes Park, and Valley Park. Concepts were then refined through city and public input and incorporated into the final plan.

The final product is a reinvestment plan that becomes the capital improvement plan for the City’s parks.

# PROJECT EXPERIENCE: EOR

## Arlington-Pascal Stormwater Improvements

Saint Paul, Minnesota



### CLIENT BENEFITS

- » Project recognition and awareness with multiple awards on the municipal, state, & national level.
- » Met phosphorus reduction targets.
- » Improved runoff water quality & reduced runoff discharge volume.
- » Significant cost savings and elimination of community flooding.
- » Cost-sharing plan developed between overlapping cities based on percentage benefit/use.

The project was to meet the Como Lake Strategic Management Plan's objective of improving water quality by reducing phosphorus inputs, while eliminating residential flooding. EOR completed a detailed study of the sub-watersheds through a series of sophisticated engineering models that included both an extensive hydrologic/hydraulic evaluation and the modeling of existing & proposed conditions using XP-SWMM, while P8 was used to model water quality. Main project components included:

- » 8 community raingardens
- » 8 under road, infiltration trenches
- » largest underground storage facility in Minnesota at time of installment
- » regional stormwater pond / infiltration basin
- » municipal stormdrain improvements



## Bruce Vento Nature Sanctuary

Saint Paul, Minnesota



### Project Recognition:

2005 Heritage Preservation Award,  
*St. Paul Heritage Preservation Committee*

2005 Take Pride in America Award,  
*U.S. Department of the Interior*

### CLIENT BENEFITS

- » Project recognition with several local, national, and historic preservation awards.
- » Ecorestoration provides areas for community environmental education initiatives.
- » Previous brownfield now a community amenity, forming foundation for future nature interpretive center.
- » Ties into existing trail system and future trails planned for the connection to the Trillium-Trout Brook Greenway restoration area.

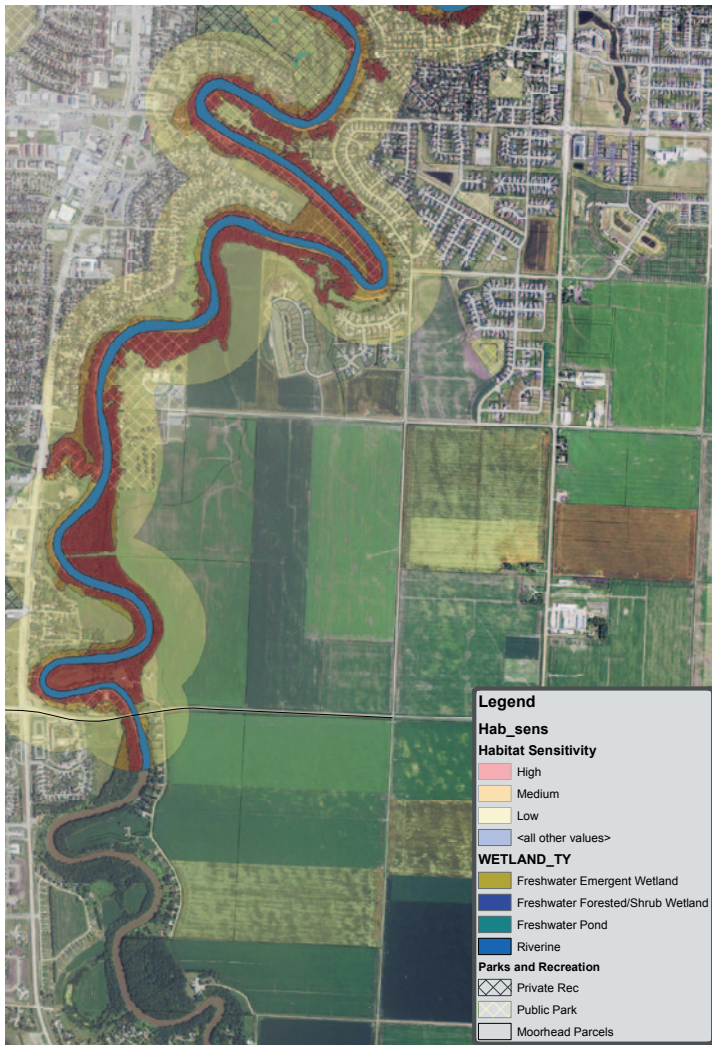
The historic, sacred Carver's Cave & early Mississippi River settlement area (now known as the Bruce Vento Nature Sanctuary) was restored from brownfield conditions to include a 870 foot groundwater-fed stream, 3 wetlands, black & tamarack seepage swamps, and 4 acres of bedrock bluff prairie. The ecological restoration was integrated with park design concepts and 1.4 trail miles were also constructed for future paving.

This project required complex collaboration with park planning, historic preservation, and tribal resource protection efforts. Design services included: various public and project partner presentations, wetland permitting, coordinating with the contaminated area's Response Action Plan, and construction oversight.

# PROJECT EXPERIENCE: EOR & HKGI

## Moorhead Red River Corridor Study

Moorhead, Minnesota



### CLIENT BENEFITS

- » Enhancement of recreational infrastructure.
- » Conservation, management & the restoration of wildlife and habitat diversity.
- » Improved public participation and awareness of land & water issues.
- » Reduced risk of flood damage for people, property, and the environment in the floodplain and its tributary waters.

The Red River corridor in Moorhead has been recognized as a flood mitigation asset that can provide opportunities for natural resource enhancement, mgmt., and recreation. The City of Moorhead is acquiring property along the corridor for mitigation and has added 800 new acres of parkland.

EOR, along with the Hoisington Koegler Group, Inc., participated in the master planning effort to study issues along the corridor related to integrating habitat restoration & public recreation with flood mitigation efforts. EOR provided recommendations for sustainably managing the parkland & mapped and identified suitable areas along the corridor for habitat enhancement. Based on the City's needs & recreational capacity, EOR also proposed long-term restoration and habitat maintenance implementation and costs.

The master plan provides a long-term policy & implementation strategy for future habitat restoration, recreation, & management of the river corridor in Moorhead.



## Tonka on the Creek Stewardship Plan

Minnetonka, Minnesota



### CLIENT BENEFITS

- » Long-term management plan for invasive species control and restoration of a buckthorn infested site will protect portions of Minnehaha Creek.
- » Plan provides a detailed, long-term implementation schedule & cost estimate for natural resources mgmt. and restoration activities.

A stewardship plan was prepared for a City-owned site that protects a portion of Minnehaha Creek and is currently infested with buckthorn. Part of the site will be redeveloped as an apartment complex, and as required by the City the remaining area will be restored.

The stewardship plan included a desktop review of the site, interview with the Natural Resource Manager for the City of Minnetonka, and a field visit of the site where EOR assessed the site for natural resource management including invasive species control and plant community restoration.

The Stewardship Plan included site specific goals, detailed management recommendations & strategies, a 10-year implementation schedule, and a 10-year cost estimate for the implementation of those management activities.





Creating *places*  
that *enrich* people's lives

