

2:56 PM

3/6/2018

i:\pww\engineer\projects\1500-1999-2018_street_preservation\drawings\1690_ttl.dwg

MINNESOTA DEPARTMENT OF TRANSPORTATION CITY OF DULUTH DEPARTMENT OF PUBLIC WORKS AND UTILITIES ENGINEERING DIVISION

CONSTRUCTION PLAN FOR : MILL & OVERLAY, RECLAIMING, CURB & GUTTER, SIDEWALKS, ADA IMPROVEMENTS,
LOCATED ON: W. ANOKA ST., BRISTOL ST., CLOVER ST., E. 8TH ST., HIGHLAND ST., MAXWELL AVE.

GOVERNING SPECIFICATIONS
 THE 2018 EDITION OF THE MINNESOTA DEPARTMENT OF TRANSPORTATION "STANDARD SPECIFICATIONS FOR CONSTRUCTION" SHALL GOVERN.
 AVAILABLE AT:
<http://www.dot.state.mn.us/pre-letting/spec/index.html>
 THE 2017 EDITION OF THE CITY OF DULUTH PUBLIC WORKS AND UTILITIES DEPARTMENT CONSTRUCTION STANDARDS AND SUPPLEMENTS OR ADDENDUMS SHALL APPLY.
 AVAILABLE AT:
<http://www.duluthmn.gov/engineering/standard-construction-specifications/>
 ALL TRAFFIC CONTROL DEVICES AND SIGNING SHALL CONFORM TO THE MN MUTCD, INCLUDING THE FIELD MANUAL DATED JANUARY 2014
 AVAILABLE AT:
<http://www.dot.state.mn.us/trafficeng/publ/fieldmanual/index.html>
 THE SUBSURFACE UTILITY INFORMATION IN THIS PLAN IS UTILITY LEVEL D. THIS QUALITY LEVEL WAS DETERMINED ACCORDING TO THE GUIDELINES OF CI/ASCE 38-02, ENTITLED "STANDARD GUIDELINES FOR THE COLLECTION AND DEPICTION OF EXISTING SUBSURFACE UTILITY DATA".

INDEX

SHEET NO.	DESCRIPTION
1	TITLE
2	STATEMENT OF ESTIMATE QUANTITIES
3-6	TYPICAL SECTIONS
7	DETAILS
8-12	TABULATIONS
13-16	PAVEMENT MARKINGS
17-21	TRAFFIC CONTROL

THIS PLAN CONTAINS 21 SHEETS

CITY OF DULUTH PROJECT NO.	1690	
GROSS LENGTH	XX.XX FEET	XX.XX MILES
W. ANOKA ST.	2943.6' FEET	0.557 MILES
BRISTOL ST.	748.85 FEET	0.142 MILES
CLOVER ST.	XX.XX FEET	XX.XX MILES
HIGHLAND ST.	XX.XX FEET	XX.XX MILES
E. 8TH ST.	XX.XX FEET	XX.XX MILES
MAXWELL ST.	2236.98 FEET	0.885 MILES
EXCEPTIONS-LENGTH	X FEET	X MILES
NET LENGTH	XX FEET	XX MILES

I HEREBY CERTIFY THAT THIS PLAN WAS PREPARED BY ME OR UNDER MY DIRECT SUPERVISION AND THAT I AM A DULY LICENSED PROFESSIONAL ENGINEER UNDER THE LAWS OF THE STATE OF MINNESOTA.
 PRINT NAME: _____ LICENSE # _____
 DATE: _____ SIGNATURE: _____
 DESIGN TEAM P.LOOMIS, D.KRATOCHWILL, S.ANDERSON

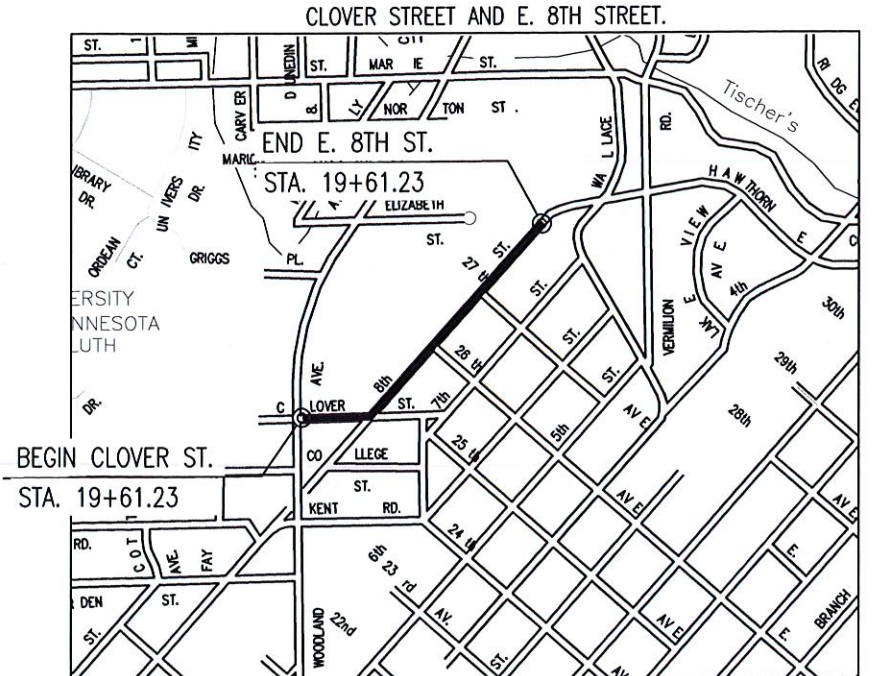
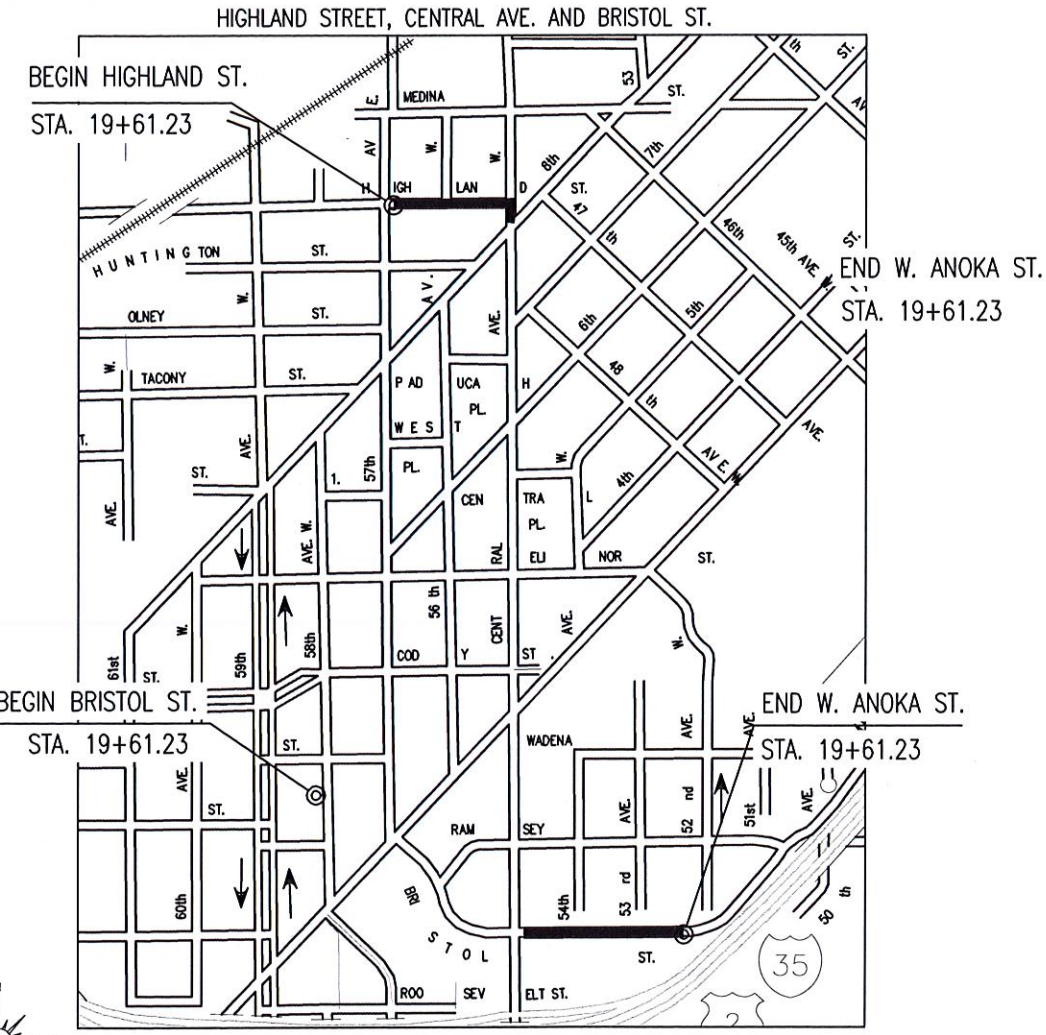
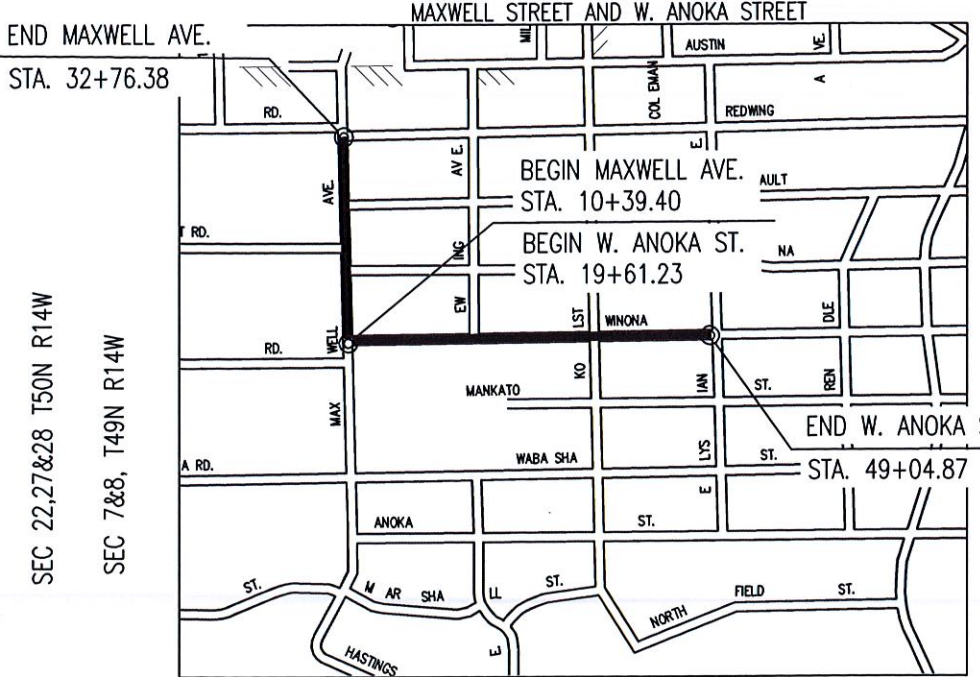
CITY OF DULUTH APPROVALS

RECOMMENDED FOR APPROVAL _____ 20 _____
 CHIEF ENGINEER OF TRANSPORTATION

RECOMMENDED FOR APPROVAL _____ 20 _____
 CHIEF ENGINEER OF UTILITIES

RECOMMENDED FOR APPROVAL _____ 20 _____
 CITY ENGINEER

CITY OF DULUTH PROJ. NO. _____ SHEET NO. _____ OF _____ SHEETS



SCALE: 1" = 2250'

PLAN REVISIONS		
DATE	SHEET NO.	APPROVER

WARNING:
 LOCATION OF UNDERGROUND UTILITIES TO BE VERIFIED BY CONTRACTOR.
 CALL BEFORE DIGGING. GOPHER STATE ONE CALL 1-800-252-1166
 REQUIRED BY LAW