

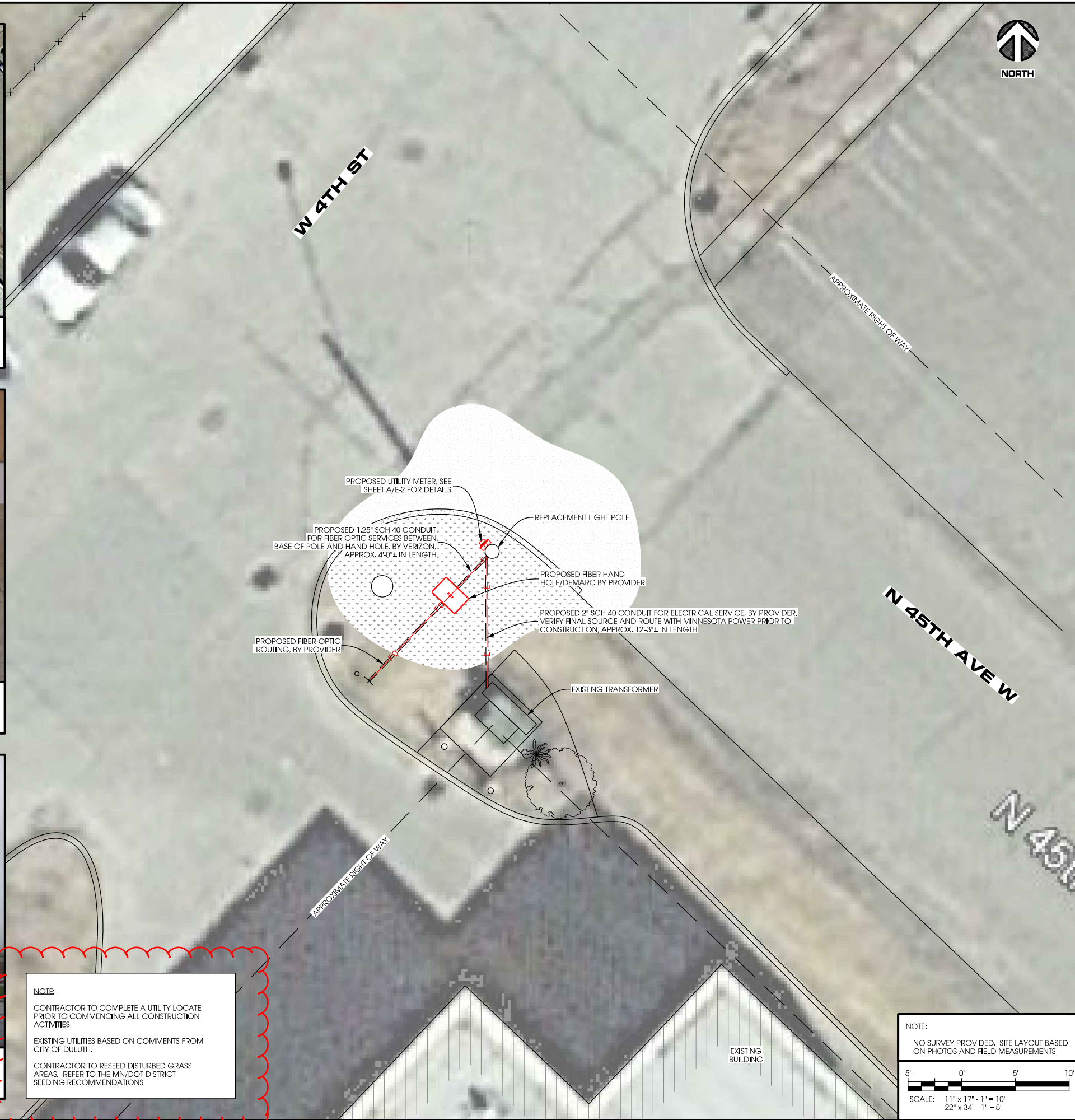
AERIAL OVERVIEW



**SITE OVERVIEW
[LOOKING SOUTHEAST]**



**SITE OVERVIEW
[LOOKING NORTHWEST]**



Jacobs Engineering Group, Inc
2727 Patton Road
Roseville, Minnesota 55113
www.jacobs.com



2101 Highway 13 W
Burnsville, MN 55337
608.644.1449 voice
608.644.1549 fax
www.edgeconsult.com

PROJECT NO:	20141027670
EDGE PROJECT NO:	11947
DRAWN BY:	NBT
CHECKED BY:	OGD

REV.	DATE	DESCRIPTION	
A	01/05/2016	PRELIM SMALL CELL DWGS	RJK
B	01/12/2016	PRELIM SMALL CELL DWGS	JJP
C	03/01/2016	PRELIM SMALL CELL DWGS	TKB
0	04/04/2016	FINAL SMALL CELL DWGS	JDB
1	10/10/2016	FINAL SMALL CELL DWGS	NBT
2	10/09/2016	FINAL SMALL CELL DWGS	MJM

IT IS A VIOLATION OF LAW FOR ANY PERSON, UNLESS THEY ARE ACTING UNDER THE DIRECTION OF A LICENSED PROFESSIONAL ENGINEER, TO ALTER THIS DOCUMENT.

DUL DENFELD HIGH SCHOOL SC1
DULUTH, MN
REPLACEMENT LIGHT POLE
SMALL CELL DRAWINGS

SHEET TITLE
SITE PLAN

SHEET NUMBER
C-1

NOTE:
CONTRACTOR TO COMPLETE A UTILITY LOCATE PRIOR TO COMMENCING ALL CONSTRUCTION ACTIVITIES.
EXISTING UTILITIES BASED ON COMMENTS FROM CITY OF DULUTH.
CONTRACTOR TO RESEED DISTURBED GRASS AREAS. REFER TO THE MIN/DOT DISTRICT SEEDING RECOMMENDATIONS

NOTE:
NO SURVEY PROVIDED. SITE LAYOUT BASED ON PHOTOS AND FIELD MEASUREMENTS

SCALE: 11" x 17" - 1" = 10'
22" x 34" - 1" = 5'

LA:11900\11947\CAD\Plot\Preliminary\C-1.dgn



verizon

JACOBS

Jacobs Engineering Group, Inc
2727 Patton Road
Roseville, Minnesota 55113
www.jacobs.com

Edge

Consulting Engineers, Inc.
2101 Highway 13 W
Burnsville, MN 55337
608.644.1449 voice
608.644.1549 fax
www.edgeconsult.com

PROJECT NO: 20141027670
EDGE PROJECT NO: 11947
DRAWN BY: NBT
CHECKED BY: OGD

REV.	DATE	DESCRIPTION	
A	01/05/2016	PRELIM SMALL CELL DWGS	RJK
B	01/12/2016	PRELIM SMALL CELL DWGS	JJP
C	03/01/2016	PRELIM SMALL CELL DWGS	TKB
0	04/04/2016	FINAL SMALL CELL DWGS	JDB
1	10/10/2016	FINAL SMALL CELL DWGS	NBT
2	10/09/2016	FINAL SMALL CELL DWGS	MJM

IT IS A VIOLATION OF LAW FOR ANY PERSON, UNLESS THEY ARE ACTING UNDER THE DIRECTION OF A LICENSED PROFESSIONAL ENGINEER, TO ALTER THIS DOCUMENT.

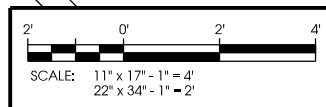
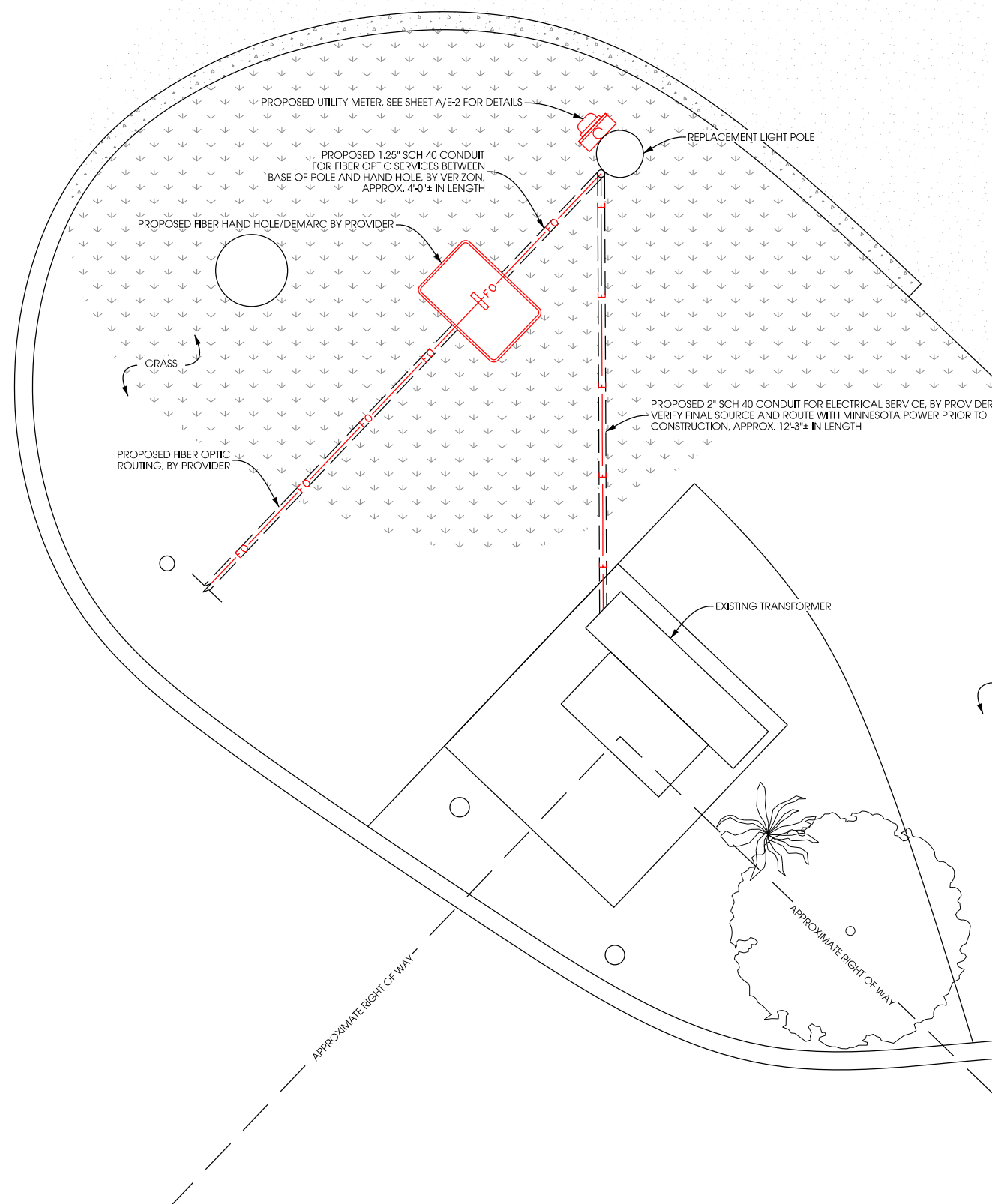
DUL DENFELD HIGH SCHOOL SC1
DULUTH, MN
REPLACEMENT LIGHT POLE
SMALL CELL DRAWINGS

SHEET TITLE
ENLARGED SITE PLAN

SHEET NUMBER
C-2

W 4TH ST

N 45TH AVE W

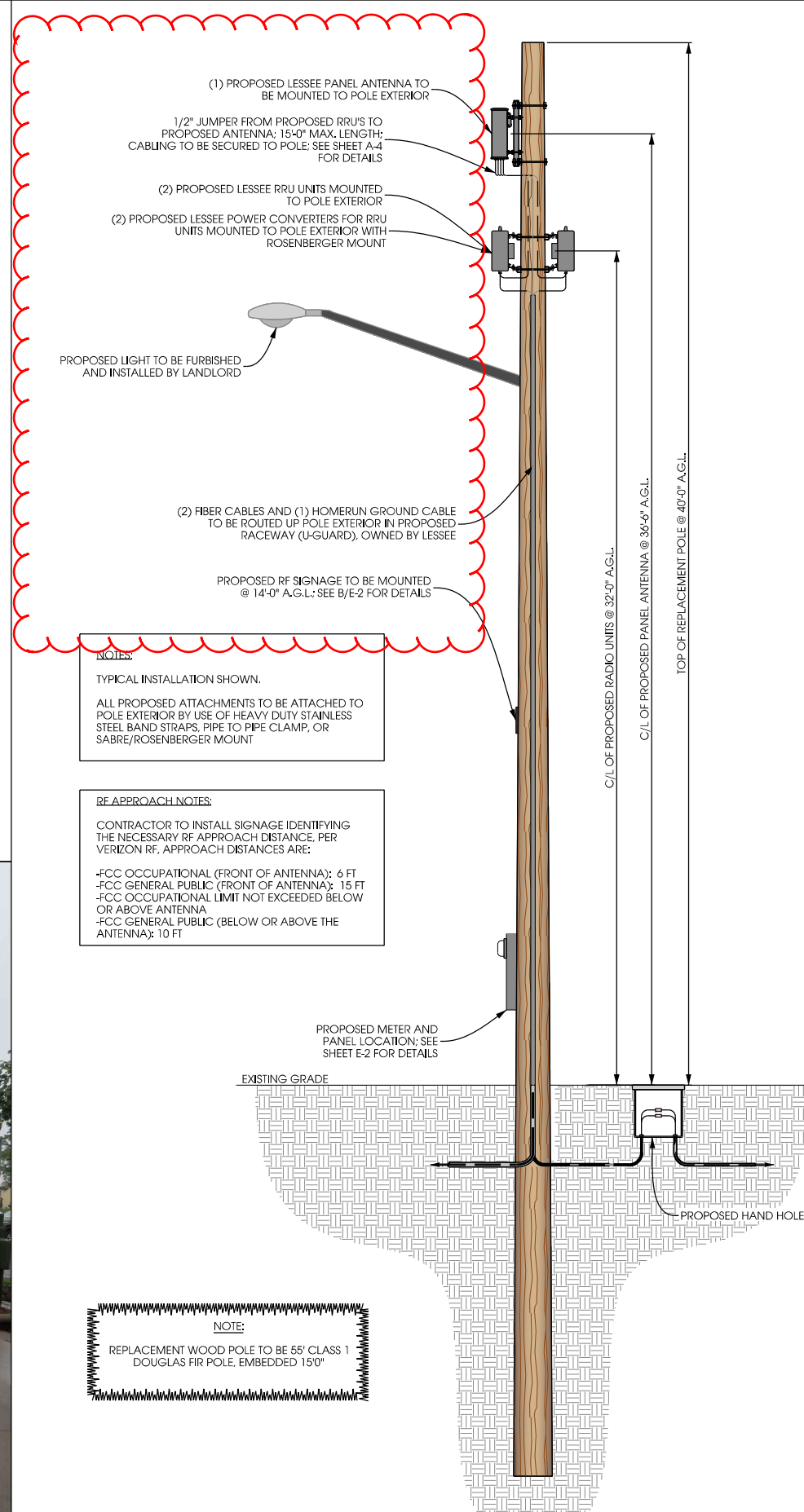


LA:11900\11947\CAD\Plot\ Preliminary\C2.dgn

NODE INFO				RADIO				ANTENNA							
PCI	Full Node Name: (Name SC1 Node#)	Band	eNB ID	Model	DU#	DU Port#	AZIMUTH	POSITION	QTY	MFR.	MODEL	PORT	C/L	ADJ ELEC TILT	MECH TILT
	Denfeld HS SC1 1	LTE	195827	RRUS-013	1	A	0	1.1	1	C55	X7CAP-265-B	+45	36.5	0	0
	Coordinates	DEG	MIN	SEC	AWS	495827	RRUS12	2	A						
	LATITUDE	46	44	49.85											
	LONGITUDE	92	9	33.59											
	Ground Elevation:	637.2'													

COAX						
QTY	TYPE	MFR.	MODEL	ELECTRIC	DIA.	RUN
1	Jumper	Commscope	LFD4-50	Foam	1/2"	TBD
1	Jumper	Commscope	LFD4-50	Foam	1/2"	TBD
1	Jumper	Commscope	LFD4-50	Foam	1/2"	TBD
1	Jumper	Commscope	LFD4-50	Foam	1/2"	TBD

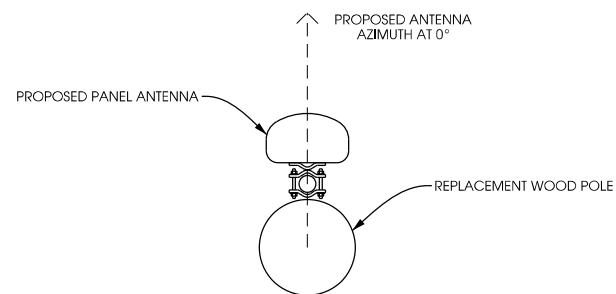
A ANTENNA AND COAX
SCALE: NTS



C LIGHT POLE ELEVATION
SCALE: 11" x 17" - 1" = 6'-0"
22" x 34" - 1" = 3'-0"



REPLACEMENT LIGHT POLE LOCATION



B ANTENNA ORIENTATION
SCALE: NTS



Jacobs Engineering Group, Inc.
2727 Patton Road
Roseville, Minnesota 55113
www.jacobs.com



2101 Highway 13 W
Burnsville, MN 55337
608.644.1449 voice
608.644.1549 fax
www.edgeconsult.com

PROJECT NO:	20141027670
EDGE PROJECT NO:	11947
DRAWN BY:	NBT
CHECKED BY:	OGD

REV.	DATE	DESCRIPTION	
A	01/05/2016	PRELIM SMALL CELL DWGS	RJK
B	01/12/2016	PRELIM SMALL CELL DWGS	JJP
C	03/01/2016	PRELIM SMALL CELL DWGS	TKB
0	04/04/2016	FINAL SMALL CELL DWGS	JDB
1	10/10/2016	FINAL SMALL CELL DWGS	NBT
2	10/09/2016	FINAL SMALL CELL DWGS	MJM

IT IS A VIOLATION OF LAW FOR ANY PERSON, UNLESS THEY ARE ACTING UNDER THE DIRECTION OF A LICENSED PROFESSIONAL ENGINEER, TO ALTER THIS DOCUMENT.

DUL DENFELD HIGH SCHOOL SC1
DULUTH, MN
REPLACEMENT LIGHT POLE
SMALL CELL DRAWINGS

SHEET TITLE
POLE ELEVATION

SHEET NUMBER

A-1