

UTILITY EASEMENT VACATION EXHIBIT



AREA TO BE VACATED

UTILITY EASEMENT VACATION LEGAL DESCRIPTION:

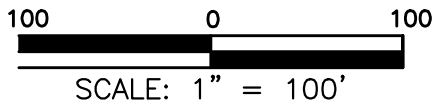
10.00 FOOT UTILITY EASEMENT OVER LOT 1, BLOCK 4, ONEOTA INDUSTRIAL PARK FIRST ADDITION ACCORDING TO THE PLAT ON FILE AND OF RECORD IN THE OFFICE OF THE REGISTER OF DEEDS, ST. LOUIS COUNTY, MINNESOTA ADJOINING THE SOUTHEASTERLY LINE OF LOT 1, BLOCK 4, OF SAID ONEOTA INDUSTRIAL PARK FIRST ADDITION.

CERTIFICATE OF TITLE NO. 323516

CITY ENGINEER:

APPROVED BY THE CITY ENGINEER OF THE CITY OF DULUTH, MINNESOTA THIS _____ DAY OF _____ 2018.

BY _____



ALTERATIONS TO THIS DRAWING ARE PROHIBITED WITHOUT THE EXPRESS WRITTEN PERMISSION OF MSA
COPYRIGHT 2018, MSA PROFESSIONAL SERVICES, INC.

JOB NO. 2685002
VACATION EXHIBIT 1
CERT. 323516



MSA

PROFESSIONAL SERVICES

TRANSPORTATION • MUNICIPAL
DEVELOPMENT • ENVIRONMENTAL
60 Plato Boulevard East, Suite 140, St. Paul, MN 55107
866-452-9454 651-334-8413 Fax: 763-786-4574

SEWER EASEMENT VACATION EXHIBIT



 AREA TO BE VACATED

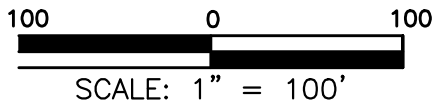
SEWER EASEMENT VACATION LEGAL DESCRIPTION:

A STRIP OF LAND 10.00 FEET WIDE LYING BETWEEN LOT 5, BLOCK 172 AND LOT 1, BLOCK 173 WEST DULUTH SEVENTH DIVISION REPLATTED AS LOT 1, BLOCK 4, ONEOTA INDUSTRIAL PARK FIRST ADDITION THE SAME BEING THE STRIP OF LAND ORIGINALLY PLATTED AS THE ALLEY BETWEEN SAID BLOCKS BUT LATER VACATED BY THE CITY OF DULUTH PER VOLUME 21 OF MISC. RECORDS, PAGE 263.

CITY ENGINEER:

APPROVED BY THE CITY ENGINEER OF THE CITY OF DULUTH, MINNESOTA THIS _____ DAY OF _____ 2018.

BY _____



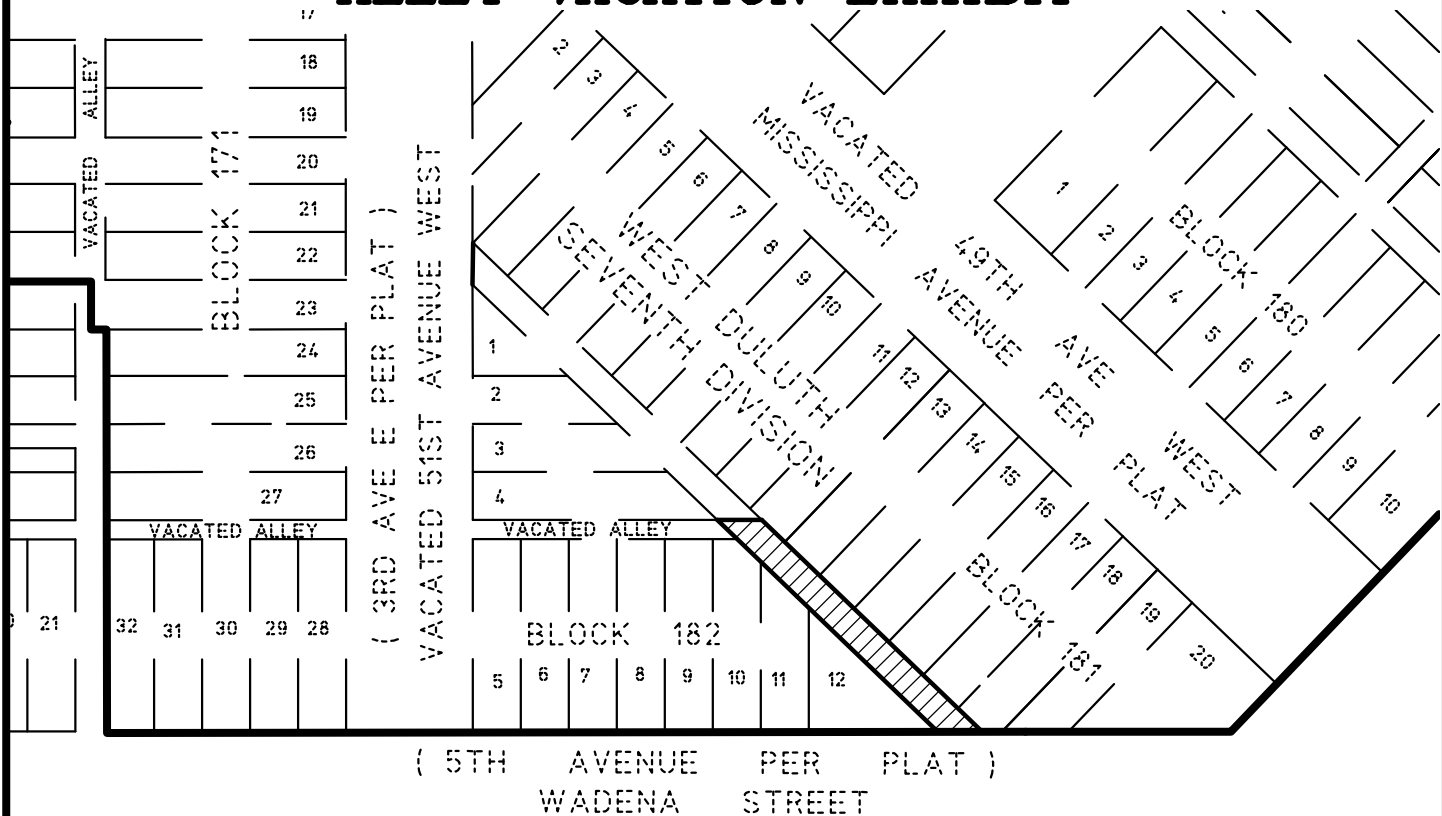
ALTERATIONS TO THIS DRAWING ARE PROHIBITED WITHOUT THE EXPRESS WRITTEN PERMISSION OF MSA COPYRIGHT 2018, MSA PROFESSIONAL SERVICES, INC.

JOB NO. 2685002
VACATION EXHIBIT 2
VOLUME 21, PAGE 263

MSA
PROFESSIONAL SERVICES

TRANSPORTATION • MUNICIPAL
DEVELOPMENT • ENVIRONMENTAL
60 Plato Boulevard East, Suite 140, St. Paul, MN 55107
866-452-9454 651-334-8413 Fax: 763-786-4574

ALLEY VACATION EXHIBIT



AREA TO BE VACATED

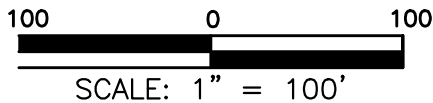
ALLEY VACATION LEGAL DESCRIPTION:

THE PLATTED ALLEY ADJOINING BLOCKS 181 AND 182, WEST DULUTH 7TH DIVISION ACCORDING TO THE PLAT ON FILE AND OF RECORD IN THE OFFICE OF THE COUNTY RECORDER, ST. LOUIS COUNTY, MINNESOTA LYING SOUTHEASTERLY OF EASTERLY EXTENSION OF THE SOUTH LINE OF LOT 4, BLOCK 182, WEST DULUTH SEVENTH DIVISION,

CITY ENGINEER:

APPROVED BY THE CITY ENGINEER OF THE CITY OF DULUTH, MINNESOTA THIS _____ DAY OF _____ 2018.

BY _____



ALTERATIONS TO THIS DRAWING ARE PROHIBITED WITHOUT THE EXPRESS WRITTEN PERMISSION OF MSA
COPYRIGHT 2018, MSA PROFESSIONAL SERVICES, INC.

JOB NO. 2685002
VACATION EXHIBIT 6
ALLEY BLOCK 178, 179 AND 180

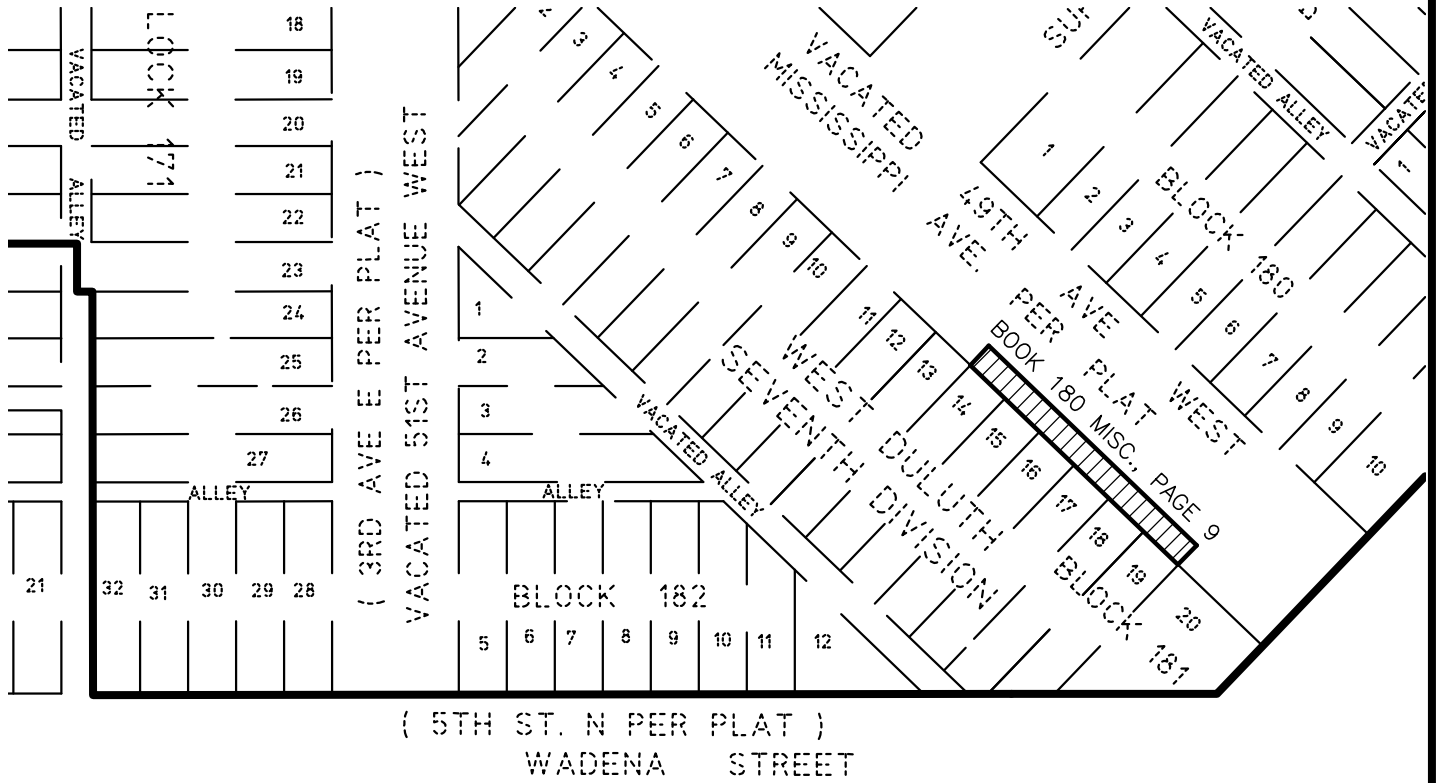


MSA

PROFESSIONAL SERVICES

TRANSPORTATION • MUNICIPAL
DEVELOPMENT • ENVIRONMENTAL
60 Plato Boulevard East, Suite 140, St. Paul, MN 55107
866-452-9454 651-334-8413 Fax: 763-786-4574

UTILITY EASEMENT VACATION EXHIBIT



AREA TO BE VACATED

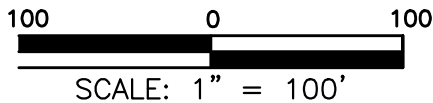
UTILITY EASEMENT VACATION LEGAL DESCRIPTION:

A 14.00 FOOT UTILITY EASEMENT LYING ADJACENT TO AND EASTERLY OF THE WEST LINE OF VACATED 49TH AVENUE WEST LYING BETWEEN THE EXTENDED COMMON LOT LINE BETWEEN LOTS 13 AND 14 AND THE EXTENDED COMMON LOT LINE BETWEEN LOTS 19 AND 20, ALL IN BLOCK 181, WEST DULUTH, SEVENTH DIVISION.

CITY ENGINEER:

APPROVED BY THE CITY ENGINEER OF THE CITY OF DULUTH, MINNESOTA THIS _____ DAY
OF _____ 2018.

BY _____



ALTERATIONS TO THIS DRAWING ARE PROHIBITED
WITHOUT THE EXPRESS WRITTEN PERMISSION OF MSA
COPYRIGHT 2018, MSA PROFESSIONAL SERVICES, INC.

JOB NO. 2685002
VACATION EXHIBIT 7
UTILITY BLOCK 181 14.00 FOOT

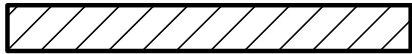
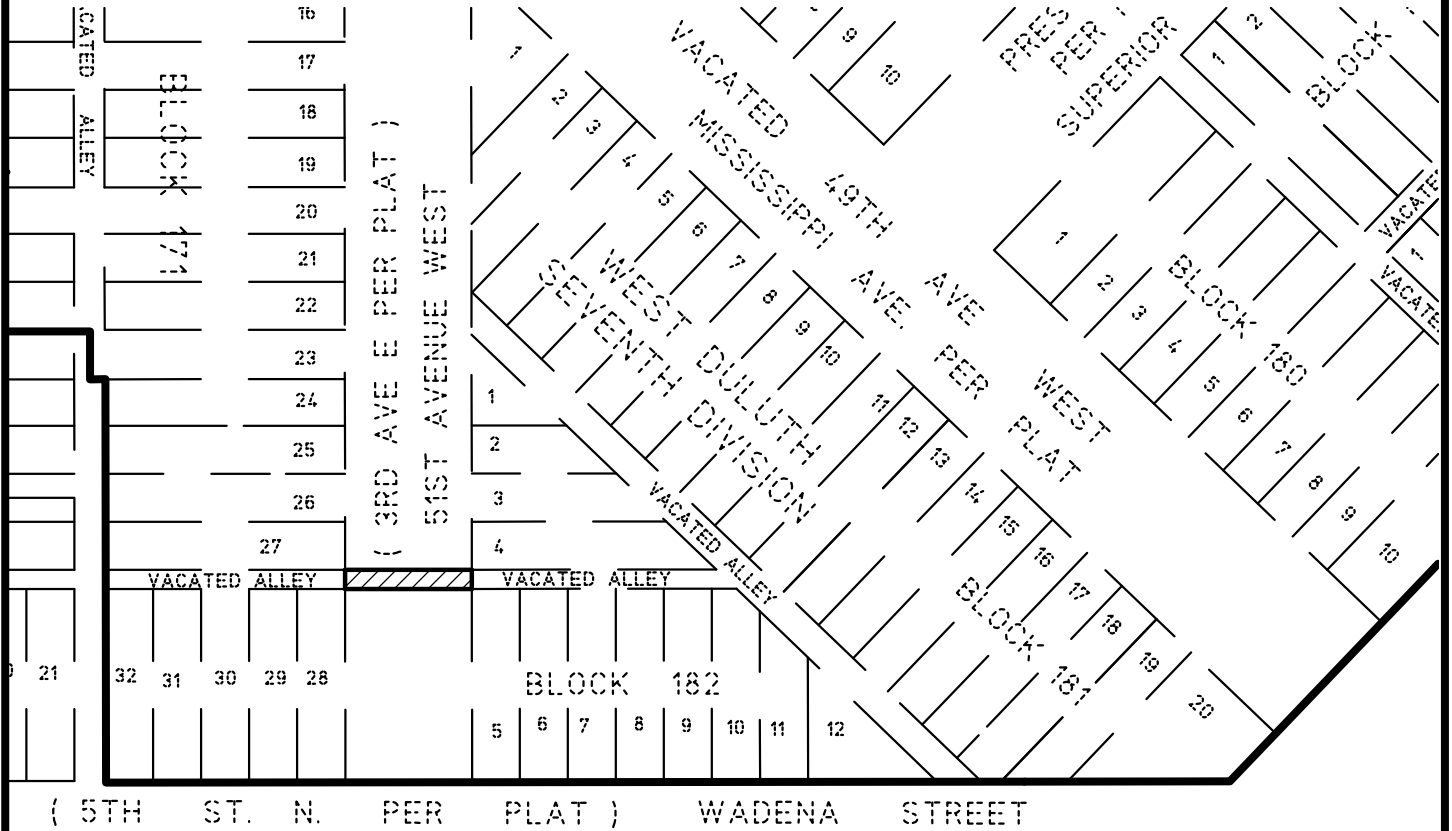


MSA

PROFESSIONAL SERVICES

TRANSPORTATION • MUNICIPAL
DEVELOPMENT • ENVIRONMENTAL
60 Plato Boulevard East, Suite 140, St. Paul, MN 55107
866-452-9454 651-334-8413 Fax: 763-786-4574

STREET VACATION EXHIBIT



AREA TO BE VACATED

STREET VACATION LEGAL DESCRIPTION:

THAT PART OF PLATTED 3RD AVE E ALSO KNOWN AS 51ST AVENUE WEST, WEST DULUTH SEVENTH DIVISION ACCORDING TO THE PLAT ON FILE AND OF RECORD IN THE OFFICE OF THE COUNTY RECORDER, ST. LOUIS COUNTY, MINNESOTA LYING SOUTHERLY OF THE WESTERLY EXTENSION OF THE SOUTH LINE OF LOT 4, BLOCK 182, WEST DULUTH SEVENTH DIVISION AND LYING NORTHERLY OF THE WESTERLY EXTENSION OF THE NORTH LINE OF LOT 5, BLOCK 182, WEST DULUTH SEVENTH DIVISION.

CITY ENGINEER:

APPROVED BY THE CITY ENGINEER OF THE CITY OF DULUTH, MINNESOTA THIS _____ DAY
OF _____ 2018.

BY _____

100 0 100



SCALE: 1" = 100'

ALTERATIONS TO THIS DRAWING ARE PROHIBITED
WITHOUT THE EXPRESS WRITTEN PERMISSION OF MSA
COPYRIGHT 2018, MSA PROFESSIONAL SERVICES, INC.

JOB NO. 2685002
VACATION EXHIBIT 10
STREET 51ST STREET

MSA

PROFESSIONAL SERVICES

TRANSPORTATION • MUNICIPAL
DEVELOPMENT • ENVIRONMENTAL
60 Plato Boulevard East, Suite 140, St. Paul, MN 55107
866-452-9454 651-334-8413 Fax: 763-786-4574

