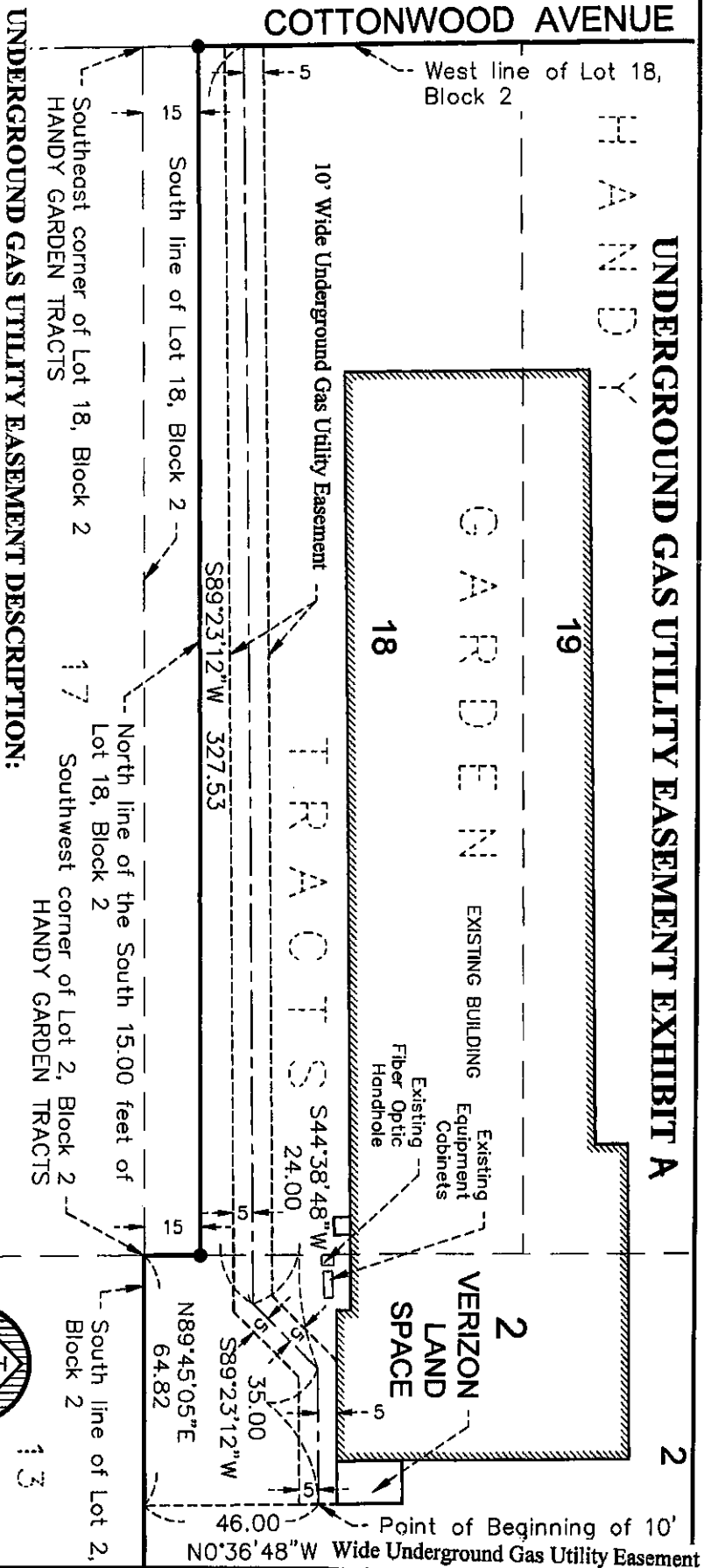


UNDERGROUND GAS UTILITY EASEMENT EXHIBIT A



WIDSBETH SMITH NOLTING

ARCHITECTS
ENGINEERS
ENVIRONMENTAL SERVICES
LAND SURVEYORS
WATER RESOURCES

ALABAMA, MN
BAXTER, MN
BENNETT, MN
CROOKSTON, MN
GRAND RAPIDS, MN
RED WING, MN
ROCKFORD, MN

© 2015 WIDSBETH SMITH NOLTING



ORIENTATION OF THIS BEARING SYSTEM IS BASED ON THE ST. LOUIS COUNTY COORDINATE SYSTEM SOUTH ZONE NAD83(2007)

● = DENOTES A FOUND IRON MONUMENT