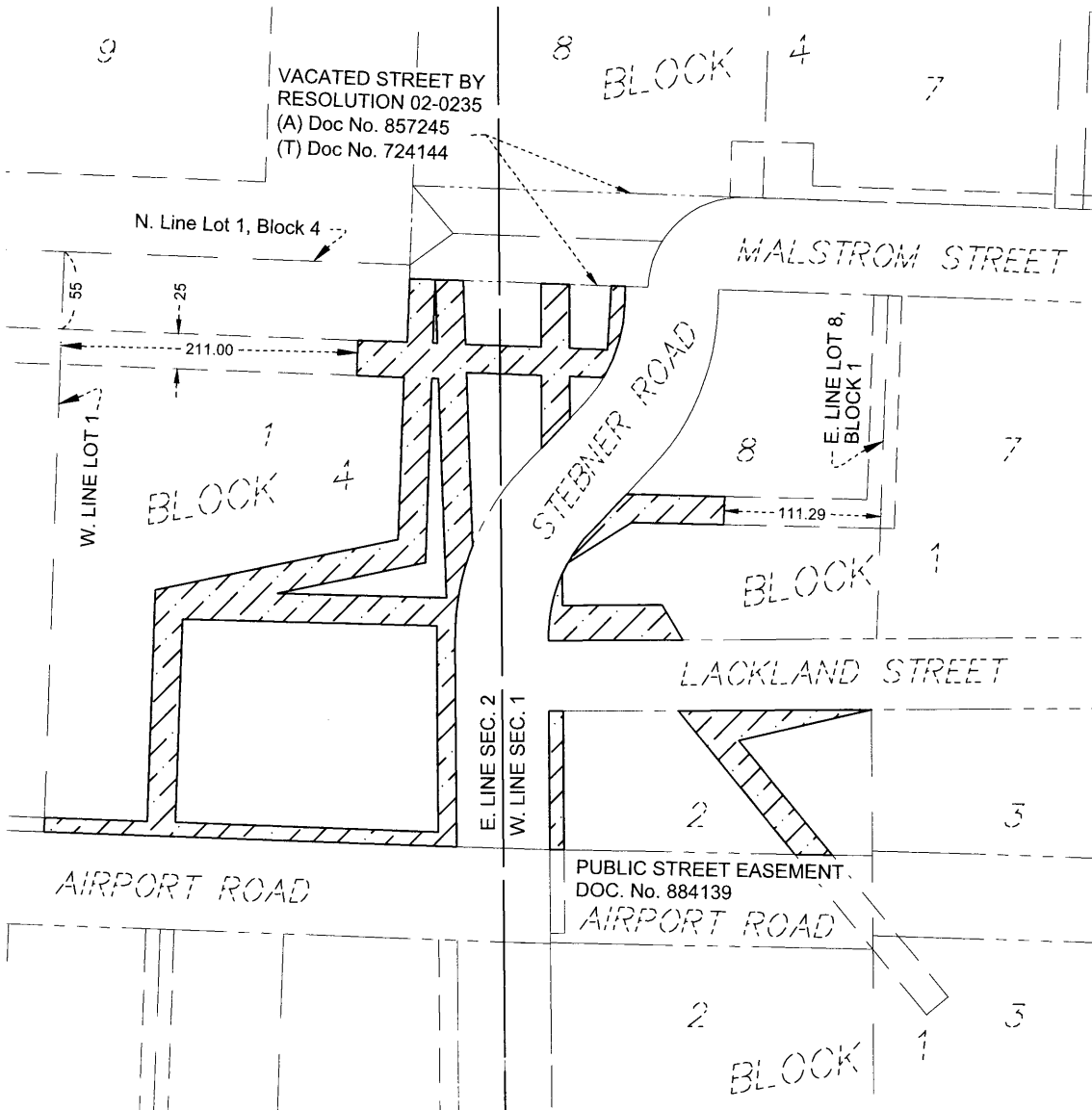
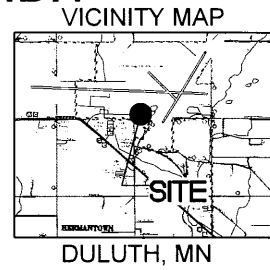
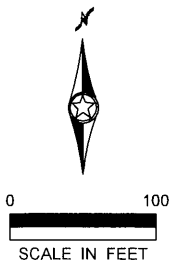


EASEMENT VACATION EXHIBIT

LOT 1, BLOCK 4
 LOTS 2 & 8, BLOCK 1
 AIRPORT DIVISION
 ST. LOUIS COUNTY, MN



VACATED EASEMENT

Approved by the City Engineer of the
 City of Duluth, MN this 20 day
 of JUNE 2024
 By

SURVEYED FOR: CITY OF DULUTH

SURVEYED BY: SEH DRAFTED BY: CDM/MJH CHECKED BY: MJH

I hereby certify that this survey, plan, or report was prepared by me or under my direct supervision and that I am a duly Licensed Land Surveyor under the laws of the state of Minnesota.

Signature: Lic. No. 47034
 Printed Name: MARK J. HASELIUS Date: 6/17/2024

| | |
|--|-------------------|
| | |
| PHONE: 218.279.3000 418 W SUPERIOR ST STE 200 DULUTH, MN 55802-1512 www.sehinc.com | |
| NO. | BY DATE REVISIONS |
| | |

LOT 1, BLOCK 4
 LOTS 2 & 8, BLOCK 1
 AIRPORT DIVISION
 ST. LOUIS COUNTY, MN

| |
|---------------------|
| FILE NO. 175978 |
| CLIENT CODE EXPL |
| 1 |
| 2 |

EASEMENT VACATION EXHIBIT
LOT 1, BLOCK 4
LOTS 2 & 8, BLOCK 1
AIRPORT DIVISION
ST. LOUIS COUNTY, MN

Lot 1, Block 4

All the platted utility easements as dedicated within Lot 1, Block 4, AIRPORT DIVISION, according to the plat thereof, on file and of record, in the Office of the St. Louis County Recorder and the Registrar of Titles, St. Louis County, Minnesota; EXCEPT the following described portion of said utility easement shall remain:

The west 211.00 feet of that certain 25-foot wide utility easement, as dedicated on the plat of AIRPORT DIVISION, as measured from the west line of said Lot 1, Block 4.

Lot 8, Block 1

All the platted utility easements as dedicated within Lot 8, Block 1, AIRPORT DIVISION, according to the plat thereof, on file and of record, in the Office of the St. Louis County Recorder, St. Louis County, Minnesota, which lies west of the east 111.29 feet of said Lot 8.

Lot 2, Block 1

All the platted utility easements as dedicated within Lot 2, Block 1, AIRPORT DIVISION, according to the plat thereof, on file and of record, in the Office of the St. Louis County Recorder, St. Louis County, Minnesota, which lies north of the public street easement created by Document Number 884139, recorded in the office of the St. Louis County Recorder.

I hereby certify that this survey, plan, or report was prepared by me or under my direct supervision and that I am a duly Licensed Land Surveyor under the laws of the state of Minnesota.

Signature: Mark J. Haselius Lic. No. 47034
 Printed Name: MARK J. HASELIUS Date: 6/17/2024

| | | | |
|---|----|------|-----------|
|  | | | |
| <small>PHONE: 218.279.3000 418 W SUPERIOR ST STE 200 DULUTH, MN 55802-1512 www.sehinc.com</small> | | | |
| NO. | BY | DATE | REVISIONS |
| | | | |

LOT 1, BLOCK 4
LOTS 2 & 8, BLOCK 1
AIRPORT DIVISION
ST. LOUIS COUNTY, MN

| |
|---------------------|
| FILE NO. 175978 |
| CLIENT CODE EXPL |
| 2 |
| 2 |