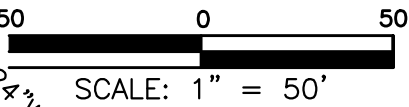
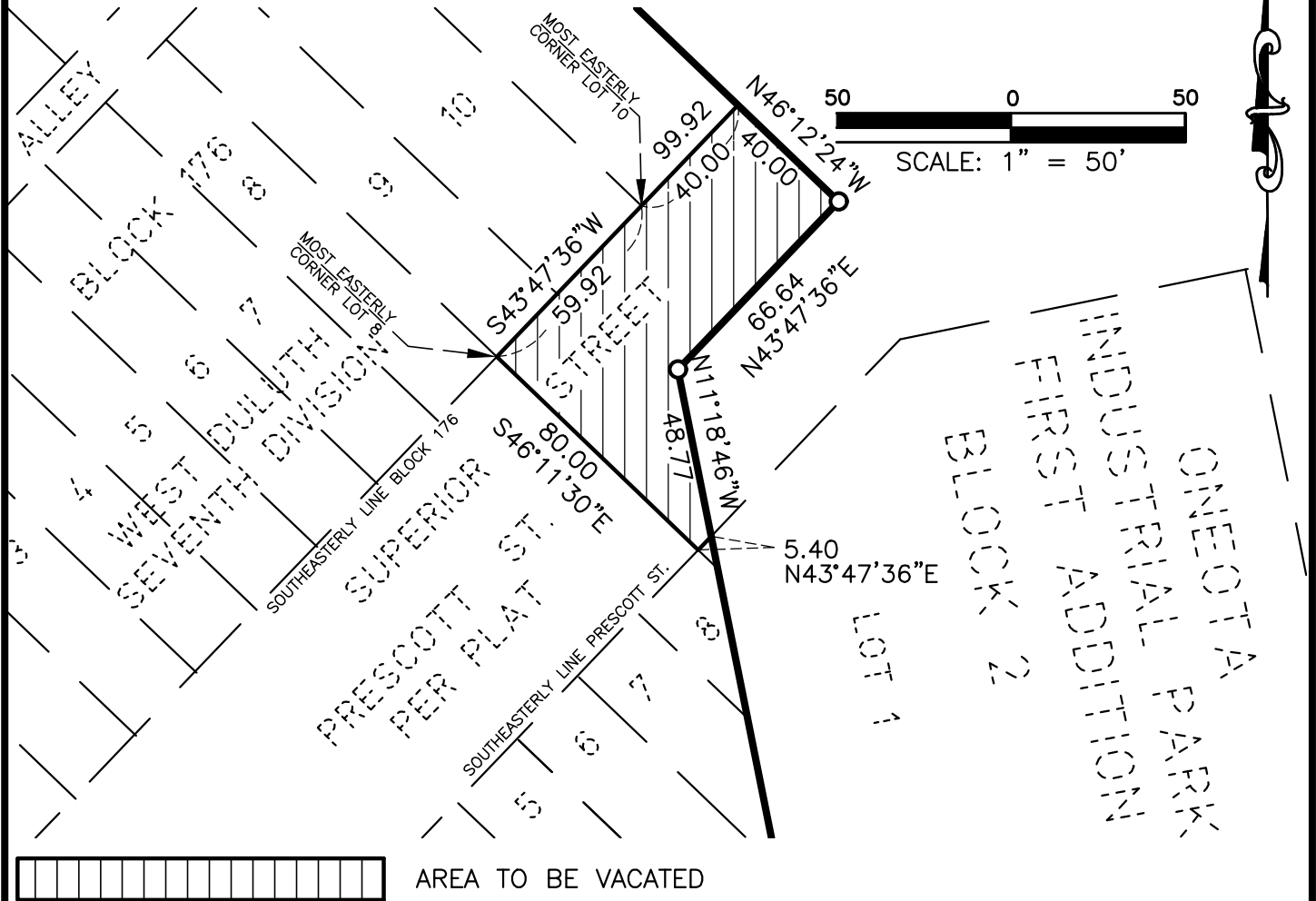


STREET AND UTILITY EASEMENT VACATION



AREA TO BE VACATED

STREET AND UTILITY EASEMENT VACATION LEGAL DESCRIPTION:

BEGINNING AT THE MOST EASTERLY CORNER OF LOT 10, BLOCK 176, WEST DULUTH SEVENTH DIVISION ACCORDING TO THE PLAT ON FILE AND OF RECORD IN THE OFFICE OF THE COUNTY RECORDER, ST. LOUIS COUNTY, MINNESOTA; THENCE SOUTH 43 DEGREES 47 MINUTES 36 SECONDS WEST ASSUMED BEARING ALONG THE SOUTHEASTERLY LINE OF SAID BLOCK 176 A DISTANCE OF 59.92 FEET TO THE MOST EASTERLY CORNER OF LOT 8, BLOCK 176, OF SAID WEST DULUTH 7TH DIVISION; THENCE SOUTH 46 DEGREES 11 MINUTES 30 SECONDS EAST A DISTANCE OF 80.00 FEET TO THE SOUTHEASTERLY RIGHT OF WAY LINE OF PRESCOTT ST.; THENCE NORTH 43 DEGREES 47 MINUTES 36 SECONDS EAST ALONG SAID SOUTHEASTERLY RIGHT OF WAY LINE OF PRESCOTT ST. A DISTANCE OF 5.40 FEET; THENCE NORTH 11 DEGREES 18 MINUTES 46 SECONDS WEST A DISTANCE OF 48.77 FEET; THENCE NORTH 43 DEGREES 47 MINUTES 36 SECONDS WEST A DISTANCE OF 66.64 FEET; THENCE NORTH 46 DEGREES 12 MINUTES 24 SECONDS WEST A DISTANCE OF 40.00 FEET; THENCE SOUTH 43 DEGREES 47 MINUTES 36 SECONDS WEST A DISTANCE OF 40.00 TO THE POINT OF BEGINNING AND THERE TERMINATING.

CITY ENGINEER:

APPROVED BY THE CITY ENGINEER OF THE CITY OF DULUTH, MINNESOTA THIS _____ DAY
OF _____ 2018.

BY _____

ALTERATIONS TO THIS DRAWING ARE PROHIBITED
WITHOUT THE EXPRESS WRITTEN PERMISSION OF MSA
COPYRIGHT 2018, MSA PROFESSIONAL SERVICES, INC.

JOB NO. 2685002
VACATION EXHIBIT 3
SUPERIOR STREET

MSA

PROFESSIONAL SERVICES

TRANSPORTATION • MUNICIPAL
DEVELOPMENT • ENVIRONMENTAL
60 Plato Boulevard East, Suite 140, St. Paul, MN 55107
866-452-9454 651-334-8413 Fax: 763-786-4574