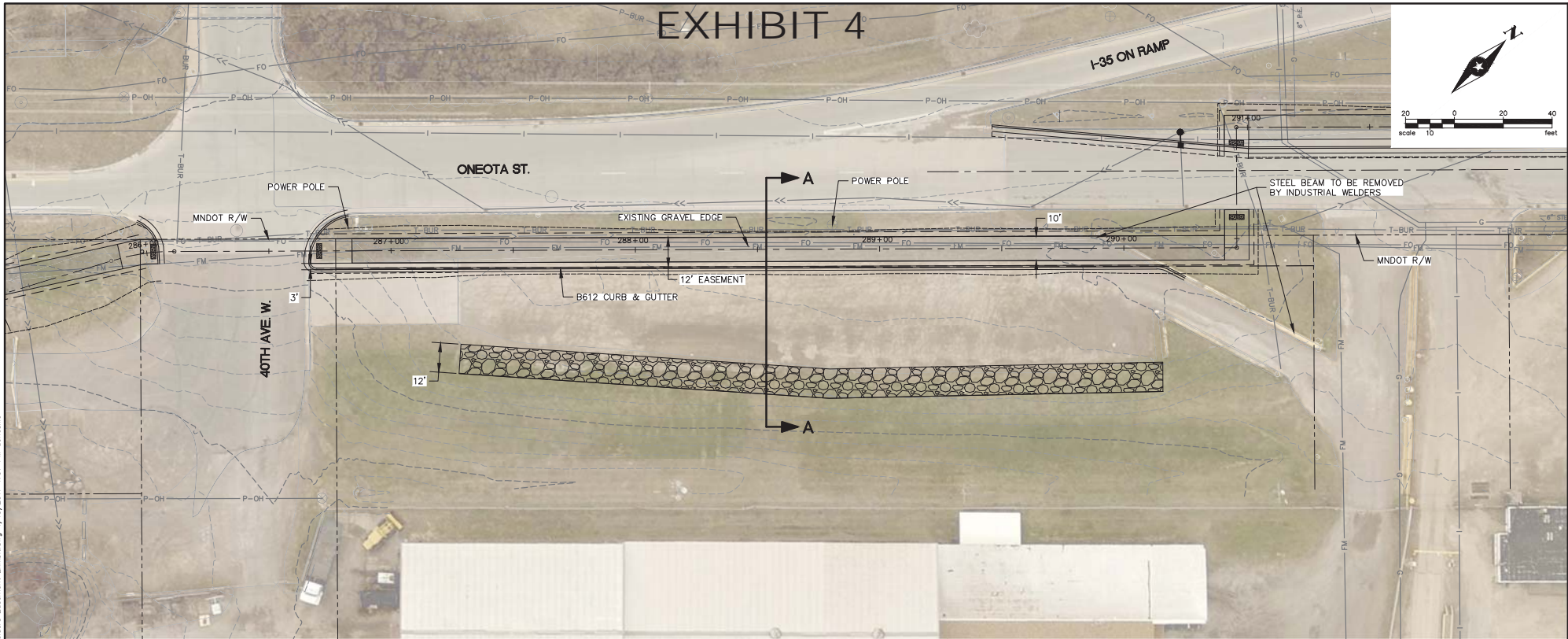
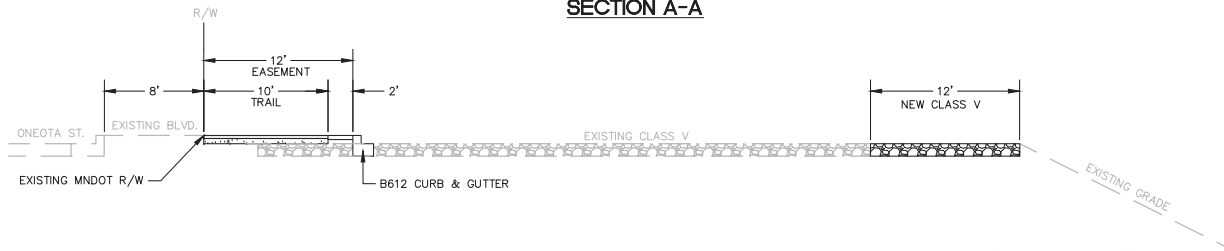


# EXHIBIT 4




## SECTION A-A



### LEGEND

- PROPOSED 10' WIDE CROSS CITY TRAIL
- 12' PARKING LOT EXPANSION

DRAWN BY:	-				
DESIGNER:	-				
CHECKED BY:	-				
DESIGN TEAM	NO.	BY	DATE	REVISIONS	


 PHONE: 218-279-3000  
 418 W SUPERIOR ST STE 200  
 DULUTH, MN 55802-1512  
[www.sehinc.com](http://www.sehinc.com)

**DULUTH,  
MINNESOTA**

**CROSS CITY TRAIL - PHASE 2  
INDUSTRIAL WELDERS EASEMENT**

FILE NO.  
 DULUT 109680

1  
 1