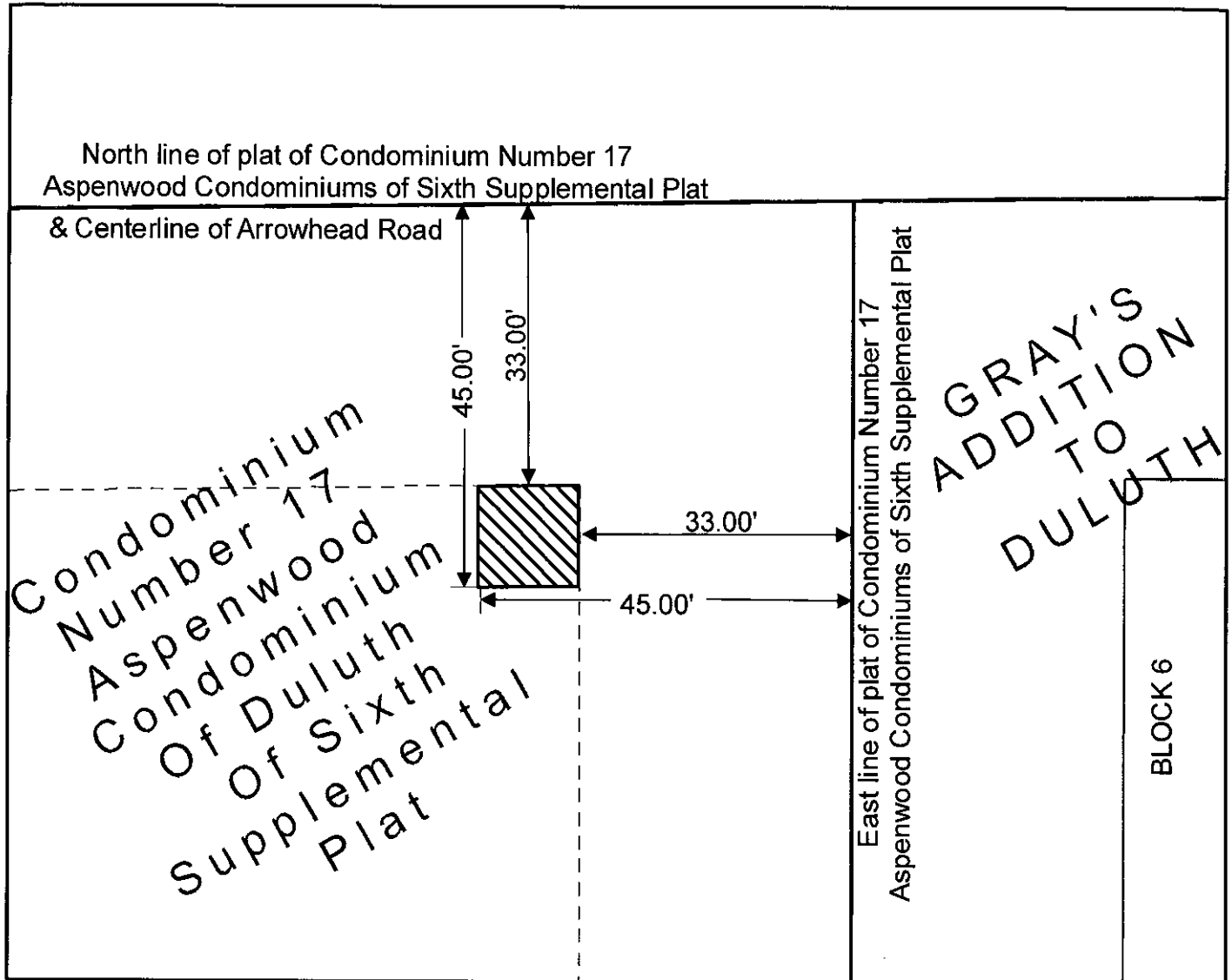
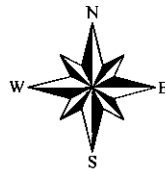


Exhibit A



Easement



0 20 Feet

A utility easement in Condominium Number 17 Aspenwood Condominiums of Duluth Sixth Supplemental Plat according to the recorded plat thereof in St. Louis County, Minnesota, described as follows;

That part of said plat that is bounded on the north by a line that is parallel with and 33.00 feet south of the north line of said plat, bounded on the south by a line that is parallel with and 45.00 feet south of said north line, bounded on the east by a line that is parallel with and 33.00 feet west of the east line of said plat, and bounded on the west by a line that is parallel with and 45.00 feet west of said east line.

APPROVED BY CITY ENGINEER

9-5-17

DATE