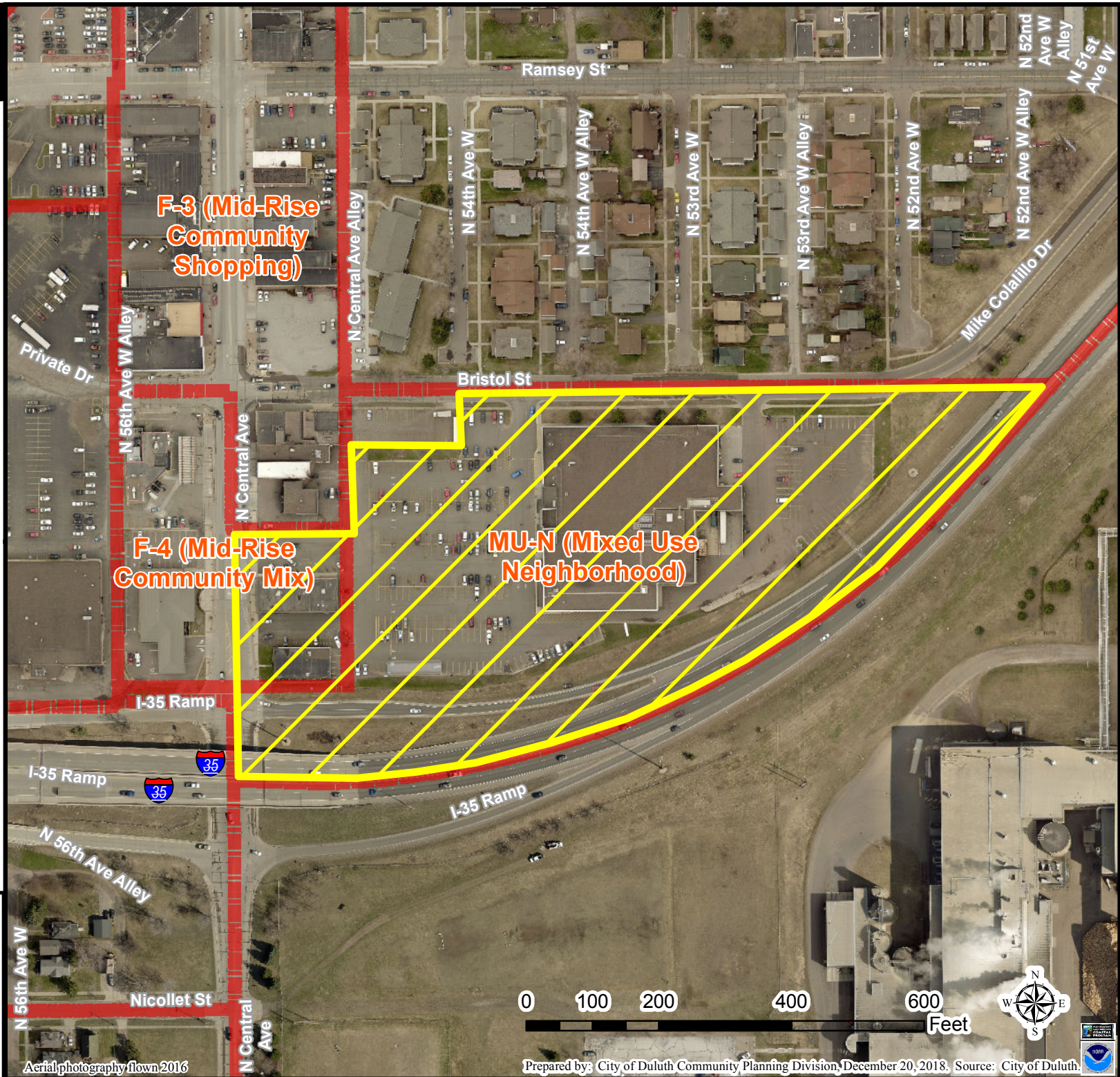




Rezoning 5300 Bristol St.
from MU-N and F-4
to MU-C by Miners Inc.
and Super One Liquor



Legend

- Municipal Boundary
- Zoning Boundaries
- Floodplain (UDC)**
 - General Flood Plain
 - Flood Way
 - Flood Fringe
- Shoreland (UDC)**
 - Cold Water
 - Natural Environment
 - General Development
 - Trout Stream (GPS)
 - Other Stream (GPS)

The City of Duluth has tried to ensure that the information contained in this map or electronic document is accurate. The City of Duluth makes no warranty or guarantee concerning the accuracy or reliability. This drawing/data is neither a legally recorded map nor a survey and is not intended to be used as one. The drawing/data is a compilation of records, information and data located in various City, County and State offices and other sources affecting the area shown and is to be used for reference purposes only. The City of Duluth shall not be liable for errors contained within this data provided or for any damages in connection with the use of this information contained within.

Aerial photography flown 2016

Prepared by: City of Duluth Community Planning Division, December 20, 2018. Source: City of Duluth.