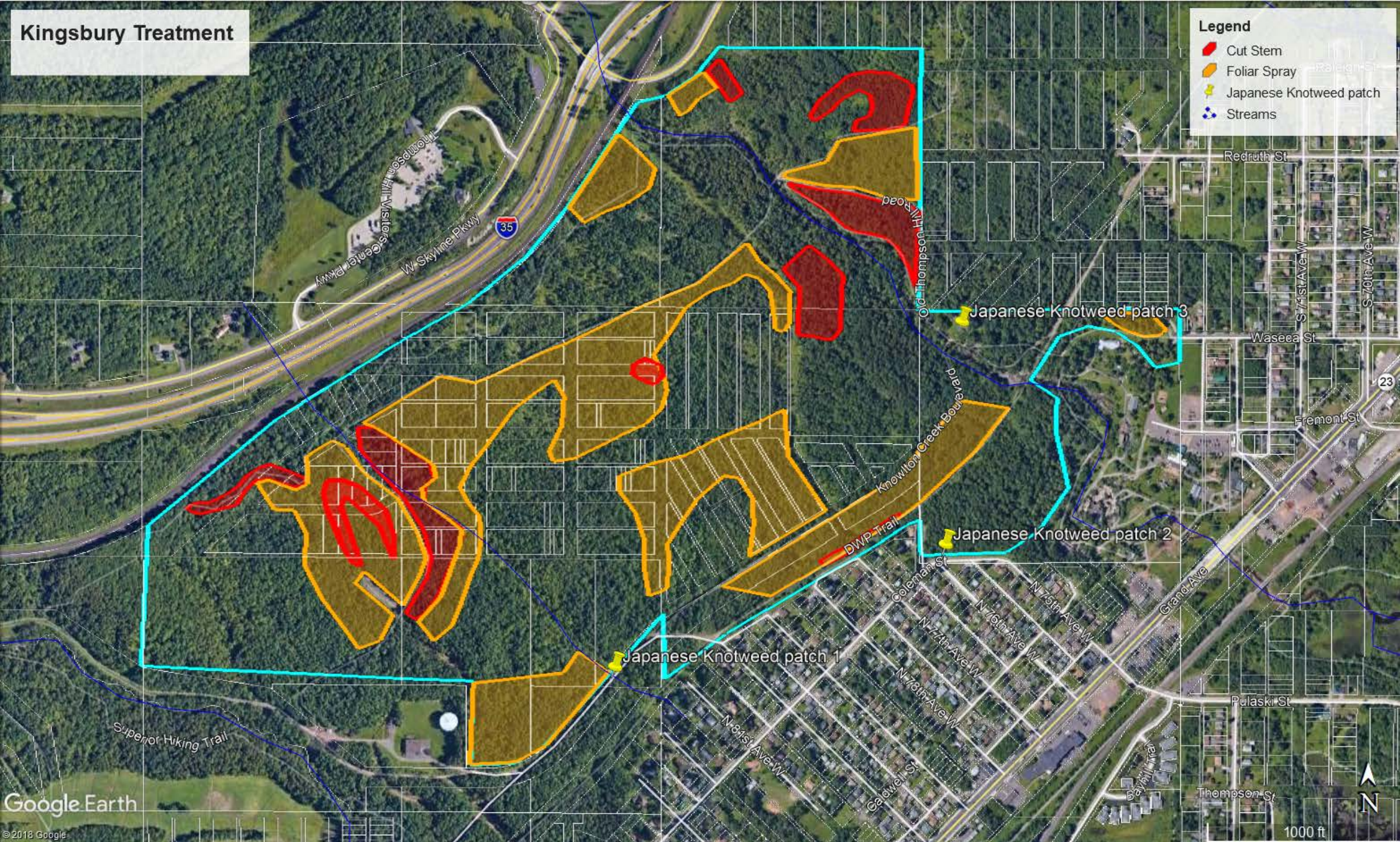
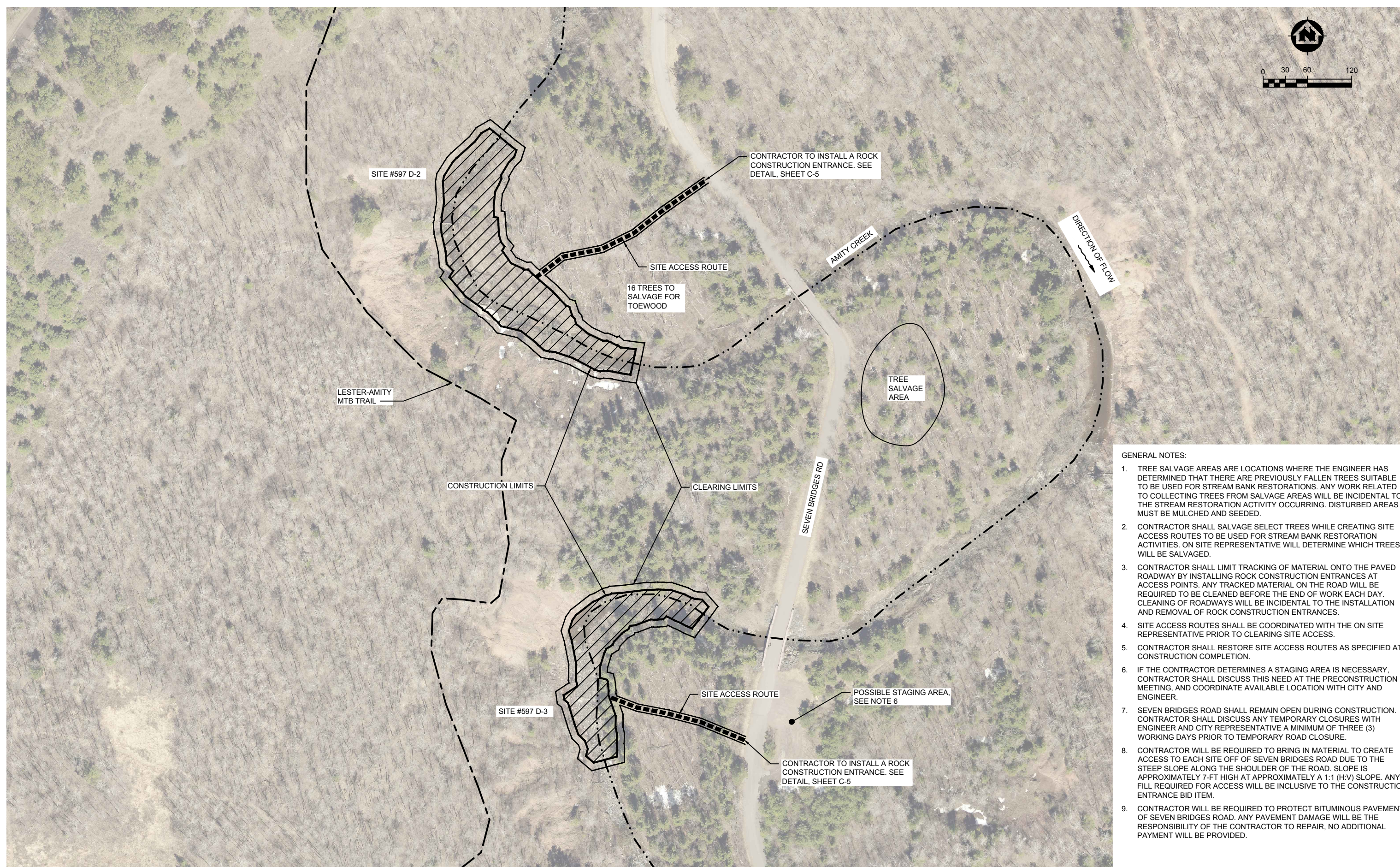
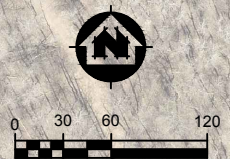


# Kingsbury Treatment

**Legend**

-  Cut Stem
-  Foliar Spray
-  Japanese Knotweed patch
-  Streams





- GENERAL NOTES:
1. TREE SALVAGE AREAS ARE LOCATIONS WHERE THE ENGINEER HAS DETERMINED THAT THERE ARE PREVIOUSLY FALLEN TREES SUITABLE TO BE USED FOR STREAM BANK RESTORATIONS. ANY WORK RELATED TO COLLECTING TREES FROM SALVAGE AREAS WILL BE INCIDENTAL TO THE STREAM RESTORATION ACTIVITY OCCURRING. DISTURBED AREAS MUST BE MULCHED AND SEEDED.
  2. CONTRACTOR SHALL SALVAGE SELECT TREES WHILE CREATING SITE ACCESS ROUTES TO BE USED FOR STREAM BANK RESTORATION ACTIVITIES. ON SITE REPRESENTATIVE WILL DETERMINE WHICH TREES WILL BE SALVAGED.
  3. CONTRACTOR SHALL LIMIT TRACKING OF MATERIAL ONTO THE PAVED ROADWAY BY INSTALLING ROCK CONSTRUCTION ENTRANCES AT ACCESS POINTS. ANY TRACKED MATERIAL ON THE ROAD WILL BE REQUIRED TO BE CLEANED BEFORE THE END OF WORK EACH DAY. CLEANING OF ROADWAYS WILL BE INCIDENTAL TO THE INSTALLATION AND REMOVAL OF ROCK CONSTRUCTION ENTRANCES.
  4. SITE ACCESS ROUTES SHALL BE COORDINATED WITH THE ON SITE REPRESENTATIVE PRIOR TO CLEARING SITE ACCESS.
  5. CONTRACTOR SHALL RESTORE SITE ACCESS ROUTES AS SPECIFIED AT CONSTRUCTION COMPLETION.
  6. IF THE CONTRACTOR DETERMINES A STAGING AREA IS NECESSARY, CONTRACTOR SHALL DISCUSS THIS NEED AT THE PRECONSTRUCTION MEETING, AND COORDINATE AVAILABLE LOCATION WITH CITY AND ENGINEER.
  7. SEVEN BRIDGES ROAD SHALL REMAIN OPEN DURING CONSTRUCTION. CONTRACTOR SHALL DISCUSS ANY TEMPORARY CLOSURES WITH ENGINEER AND CITY REPRESENTATIVE A MINIMUM OF THREE (3) WORKING DAYS PRIOR TO TEMPORARY ROAD CLOSURE.
  8. CONTRACTOR WILL BE REQUIRED TO BRING IN MATERIAL TO CREATE ACCESS TO EACH SITE OFF OF SEVEN BRIDGES ROAD DUE TO THE STEEP SLOPE ALONG THE SHOULDER OF THE ROAD. SLOPE IS APPROXIMATELY 7-FT HIGH AT APPROXIMATELY A 1:1 (H:V) SLOPE. ANY FILL REQUIRED FOR ACCESS WILL BE INCLUSIVE TO THE CONSTRUCTION ENTRANCE BID ITEM.
  9. CONTRACTOR WILL BE REQUIRED TO PROTECT BITUMINOUS PAVEMENT OF SEVEN BRIDGES ROAD. ANY PAVEMENT DAMAGE WILL BE THE RESPONSIBILITY OF THE CONTRACTOR TO REPAIR, NO ADDITIONAL PAYMENT WILL BE PROVIDED.

| PROJECT NO.:  | SCALE:      | AS SHOWN | NO. | DATE | REVISION | BY |
|---------------|-------------|----------|-----|------|----------|----|
| 00616087      |             |          |     |      |          |    |
| PROJECT DATE: | DRAWN BY:   | JAS      |     |      |          |    |
| F.B.:         | CHECKED BY: | JJJ      |     |      |          |    |

I HEREBY CERTIFY THAT THIS PLAN, REPORT, OR SPECIFICATION WAS PREPARED BY ME OR UNDER MY DIRECT SUPERVISION AND THAT I AM A DULY LICENSED PROFESSIONAL ENGINEER UNDER THE LAWS OF THE STATE OF MINNESOTA.

MAR. 13, 2017  
Date

50396  
License No.

JOSEPH J. JURKOWICZ

**MSA**  
TRANSPORTATION • MUNICIPAL DEVELOPMENT • ENVIRONMENTAL

332 W. Superior Street Duluth, MN 55802  
218-722-3915 1-800-777-7380 Fax: 218-722-4548  
Web Address: www.msa-ps.com

AMITY CREEK BANK STABILIZATION 2017  
CITY OF DULUTH, MINNESOTA  
CITY OF DULUTH PROJECT NO. 1355

ACCESS PLAN

FILE NO.  
00616087

SHEET  
C-4