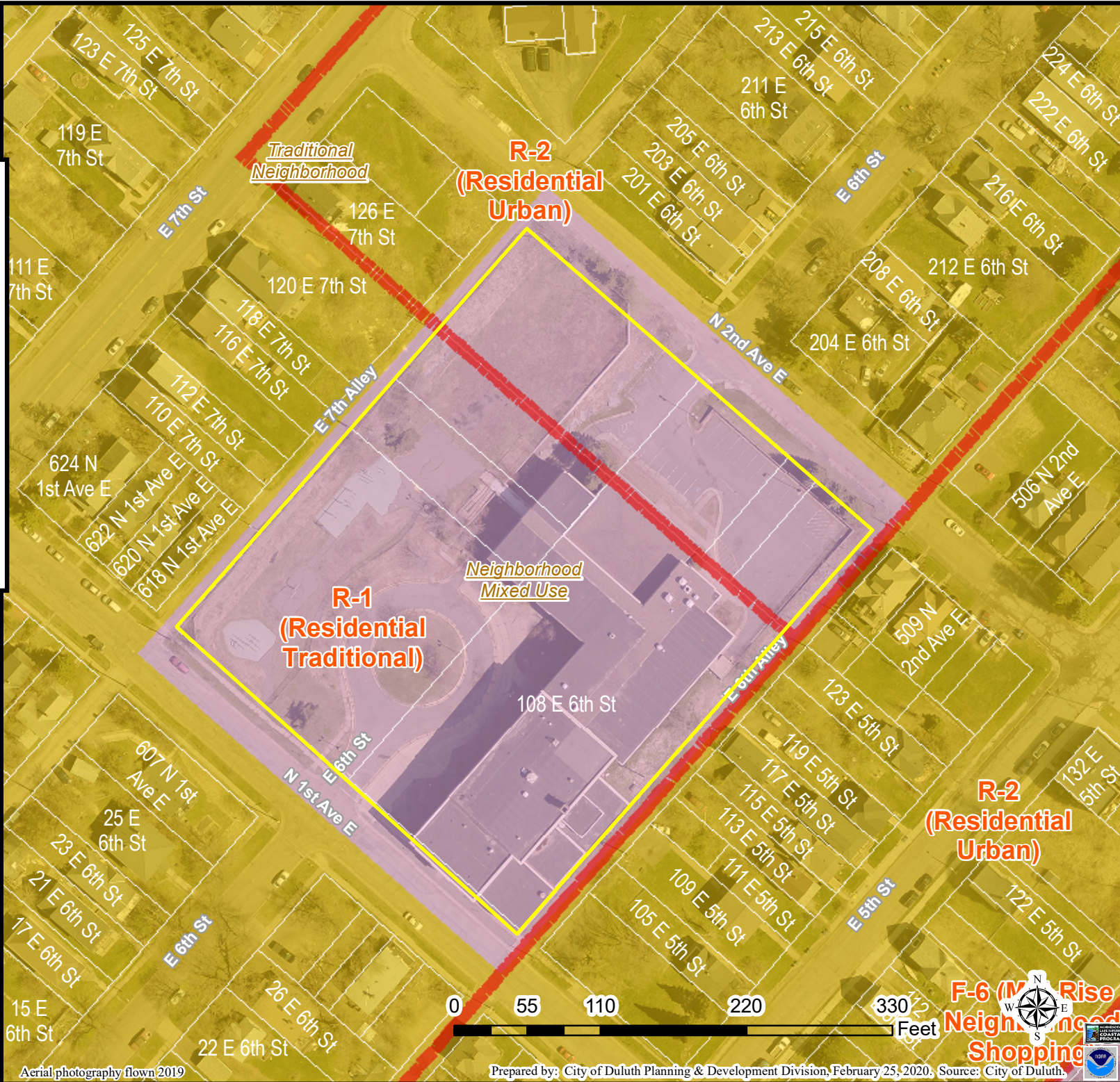




Nettleton School Rezoning

Legend

- Zoning Boundaries
- Open Space
- Open Space/Outside Duluth
- Rural Residential
- Low-density Neighborhood
- Traditional Neighborhood
- Urban Residential
- Neighborhood Commercial
- Central Business Secondary
- Central Business Primary
- Large-scale commercial
- Tourism/Entertainment District
- Commercial Waterfront
- General Mixed Use
- Neighborhood Mixed Use
- Light Industrial
- General Industrial
- Industrial Waterfront
- Business Park
- Transportation and Utilities
- Transportation and Utilities/Outside Duluth
- Medical District
- Institutional



The City of Duluth has tried to ensure that the information contained in this map or electronic document is accurate. The City of Duluth makes no warranty or guarantee concerning the accuracy or reliability. This drawing/data is neither a legally recorded map nor a survey and is not intended to be used as one. The drawing/data is a compilation of records, information and data located in various City, County and State offices and other sources affecting the area shown and is to be used for reference purposes only. The City of Duluth shall not be liable for errors contained within this data provided or for any damages in connection with the use of this information contained within.

