



verizon

JACOBS

7300 Metro Boulevard, Suite 400
Edina, MN 55439
952.831.1043
www.jacobs.com

Edge
Consulting Engineers, Inc.

2101 Highway 13 W
Burnsville, MN 55337
608.644.1449 voice
608.644.1549 fax
www.edgeconsult.com

PROJECT NO: 20141027632
EDGE PROJECT NO: 11648
DRAWN BY: NBT
CHECKED BY: OGD

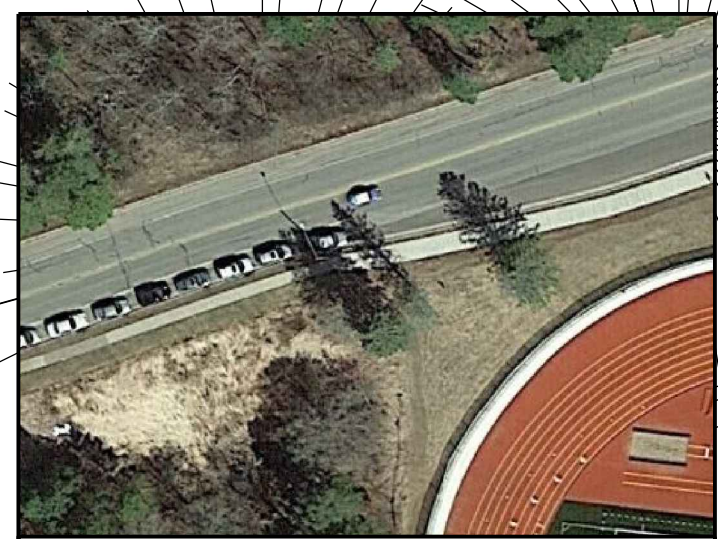
REV.	DATE	DESCRIPTION	
A	02/09/2016	PRELIM SMALL CELL DWGS	TKB
B	02/24/2016	PRELIM SMALL CELL DWGS	TKB
0	10/10/2016	FINAL DWGS	NBT
1	10/09/2017	FINAL DWGS	MJM
2	10/09/2017	FINAL DWGS	MJM
3	10/10/2017	FINAL DWGS	MJM

IT IS A VIOLATION OF LAW FOR ANY PERSON, UNLESS THEY ARE ACTING UNDER THE DIRECTION OF A LICENSED PROFESSIONAL ENGINEER, TO ALTER THIS DOCUMENT.

DUL EAST HIGH SCHOOL
DULUTH, MINNESOTA
REPLACEMENT LIGHT POLE
SMALL CELL DRAWINGS

SHEET TITLE
SITE PLAN

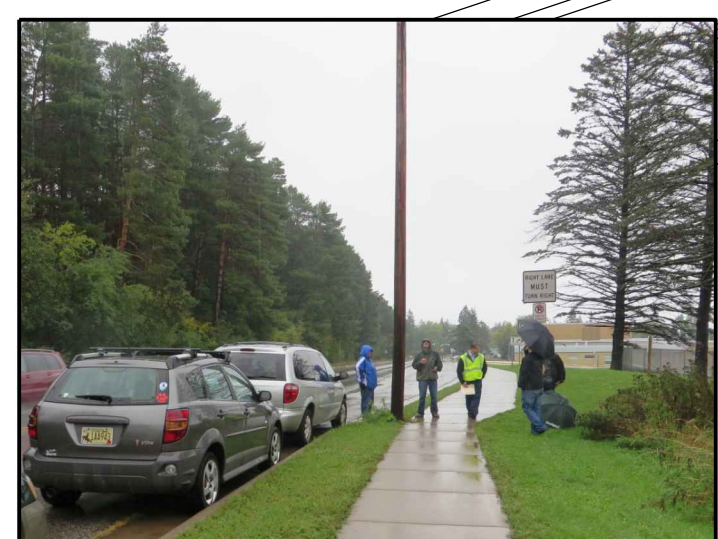
SHEET NUMBER
C-1



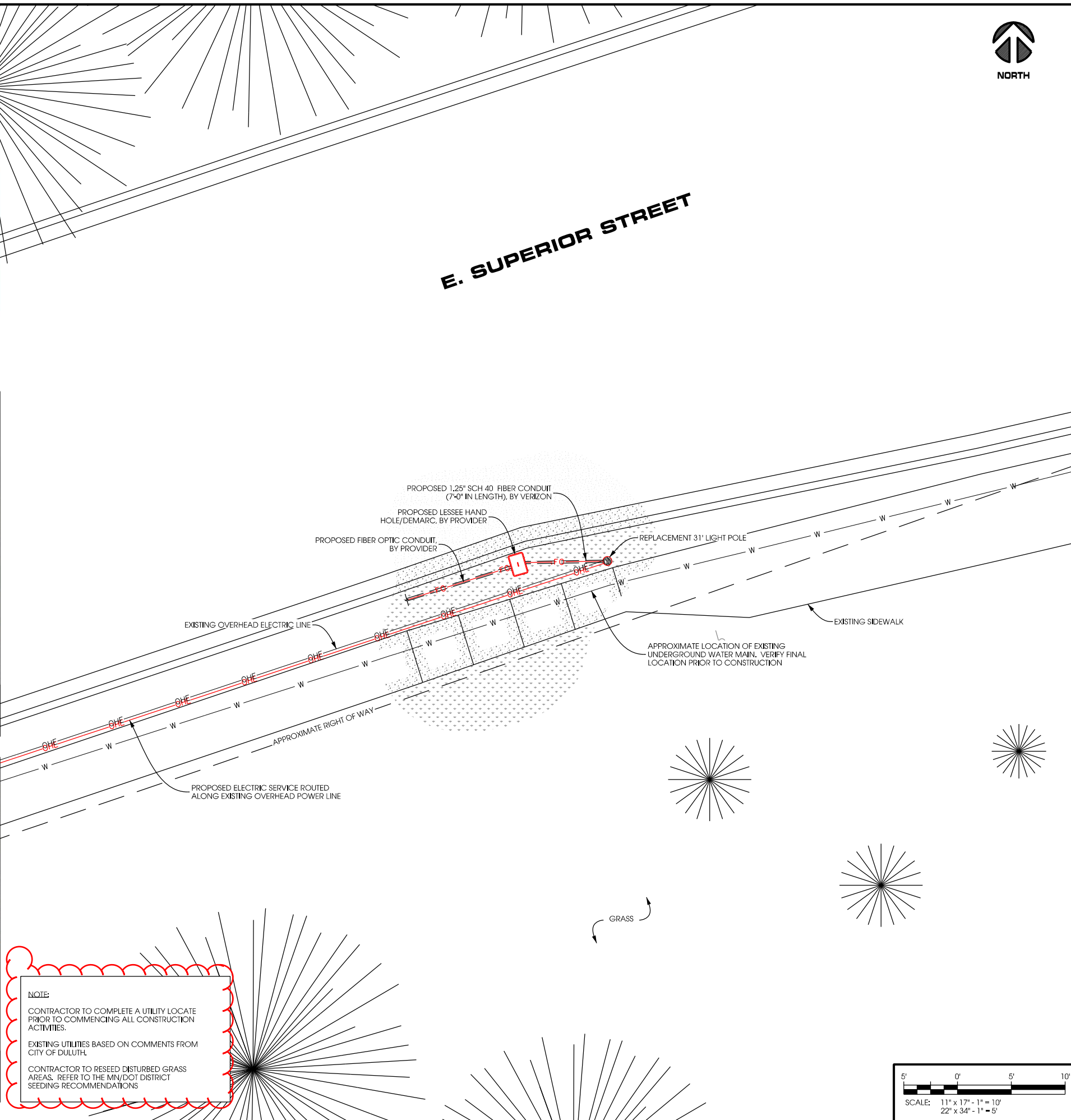
AERIAL OVERVIEW



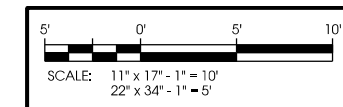
**SITE OVERVIEW
[LOOKING SOUTHEAST]**



**SITE OVERVIEW
[LOOKING EAST]**



NOTE:
CONTRACTOR TO COMPLETE A UTILITY LOCATE PRIOR TO COMMENCING ALL CONSTRUCTION ACTIVITIES.
EXISTING UTILITIES BASED ON COMMENTS FROM CITY OF DULUTH.
CONTRACTOR TO RESEED DISTURBED GRASS AREAS. REFER TO THE MN/DOT DISTRICT SEEDING RECOMMENDATIONS

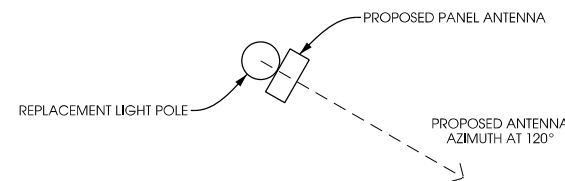


LA:11600\11648\CAD\Plot\PreliminaryC-1.dgn

NODE INFO				RADIO				ANTENNA							
PCI	Full Node Name: (Name SC1 Node#)	Band	eNR ID	Model	DU#	DU Port#	AZIMUTH	POSITION	QTY	MFR.	MODEL	PORT	C/L	ADJ ELEC TILT	MECH TILT
	Denfeld HS SC1 1	LTE	189828	RRUS-B13	1	A	120	1.1	1	CSS	X7CAP-265-B	+45	23	0	0
		AWS	489828	RRUS12	2	A		1.2				-45			
Coordinates		DEG	MIN	SEC											
LATITUDE		46	39	31.4											
LONGITUDE		92	2	45.01											
Ground Elevation:		762.8'													

COAX						
QTY	TYPE	MFR.	MODEL	DIELECTRIC	DIA.	RUN
1	Jumper	Commscope	LFD4-50	Foam	1/2"	TBD
1	Jumper	Commscope	LFD4-50	Foam	1/2"	TBD
1	Jumper	Commscope	LFD4-50	Foam	1/2"	TBD
1	Jumper	Commscope	LFD4-50	Foam	1/2"	TBD

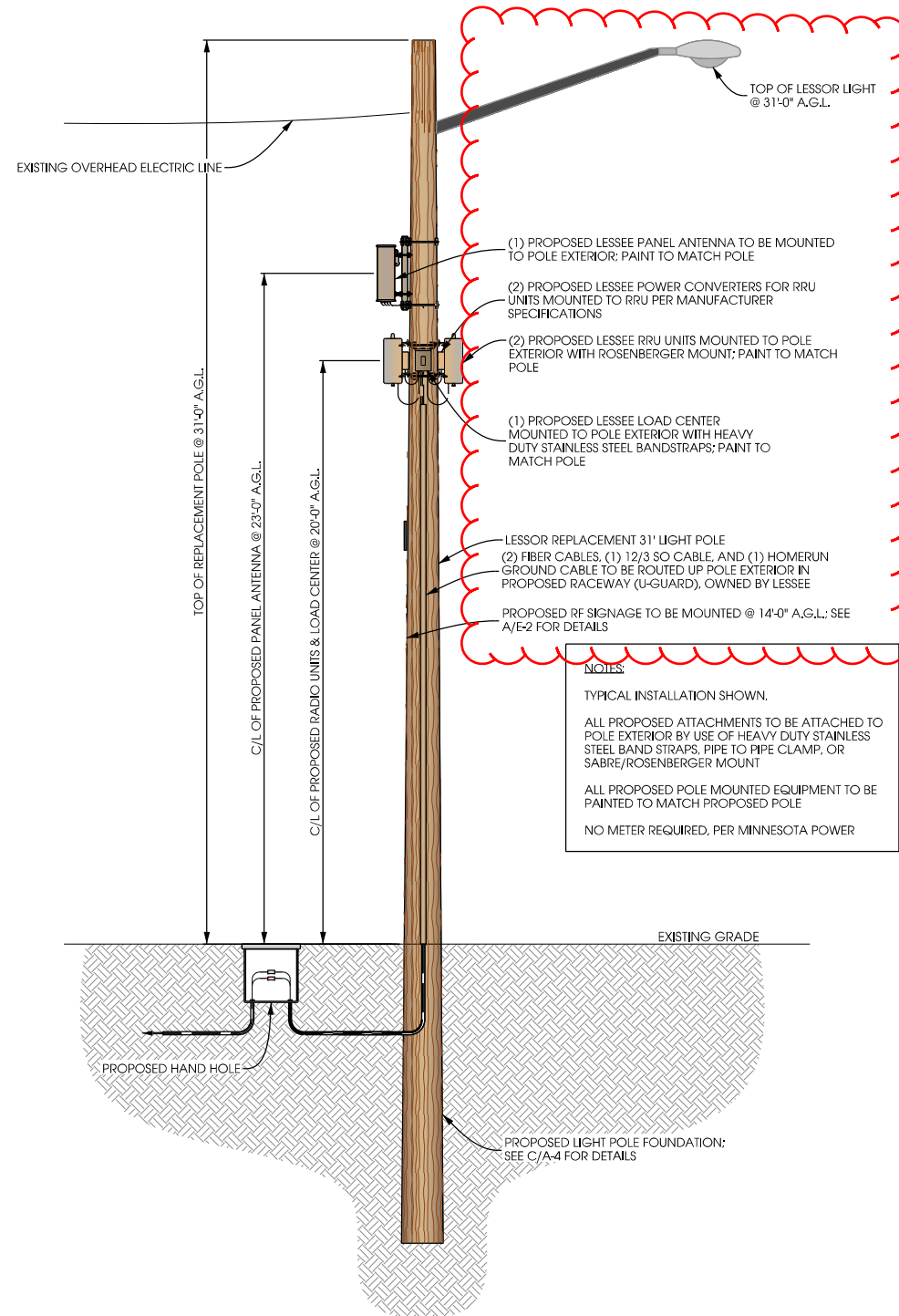
A ANTENNA AND COAX
A-1 SCALE: NTS



B ANTENNA ORIENTATION
A-1 SCALE: NTS



REPLACEMENT LIGHT POLE LOCATION



C LIGHT POLE ELEVATION
A-1 SCALE: 11" x 17" - 1" = 6'-0"
22" x 34" - 1" = 3'-0"

NOTES:
TYPICAL INSTALLATION SHOWN.
ALL PROPOSED ATTACHMENTS TO BE ATTACHED TO POLE EXTERIOR BY USE OF HEAVY DUTY STAINLESS STEEL BAND STRAPS, PIPE TO PIPE CLAMP, OR SABRE/ROSENBERGER MOUNT.
ALL PROPOSED POLE MOUNTED EQUIPMENT TO BE PAINTED TO MATCH PROPOSED POLE.
NO METER REQUIRED, PER MINNESOTA POWER.



7300 Metro Boulevard, Suite 400
Edina, MN 55439
952.831.1043
www.jacobs.com



2101 Highway 13 W
Burnsville, MN 55337
608.644.1449 voice
608.644.1549 fax
www.edgeconsult.com

PROJECT NO:	20141027632
EDGE PROJECT NO:	11648
DRAWN BY:	NBT
CHECKED BY:	OGD

REV.	DATE	DESCRIPTION	
A	02/09/2016	PRELIM SMALL CELL DWGS	TKB
B	02/24/2016	PRELIM SMALL CELL DWGS	TKB
0	10/10/2016	FINAL DWGS	NBT
1	10/09/2017	FINAL DWGS	MJM
2	10/09/2017	FINAL DWGS	MJM
3	10/10/2017	FINAL DWGS	MJM

IT IS A VIOLATION OF LAW FOR ANY PERSON, UNLESS THEY ARE ACTING UNDER THE DIRECTION OF A LICENSED PROFESSIONAL ENGINEER, TO ALTER THIS DOCUMENT.

DUL EAST HIGH SCHOOL
DULUTH, MINNESOTA
REPLACEMENT LIGHT POLE
SMALL CELL DRAWINGS

SHEET TITLE
POLE ELEVATION

SHEET NUMBER
A-1