

EXHIBIT A

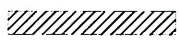
UTILITY VACATION EXHIBIT

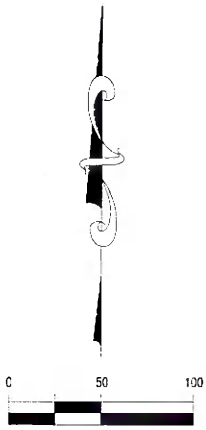
VACATION DESCRIPTION:

That part of the retained utility easement in the 10 foot wide east/west vacated Alley affecting Lots 23-28, Block 169, WEST DULUTH 7th DIVISION, City of Duluth St. Louis County, Minnesota. The west sideline terminating at the east line of the 16 foot wide north/south alley abutting and adjacent to said Block 169.

APPROVED BY:

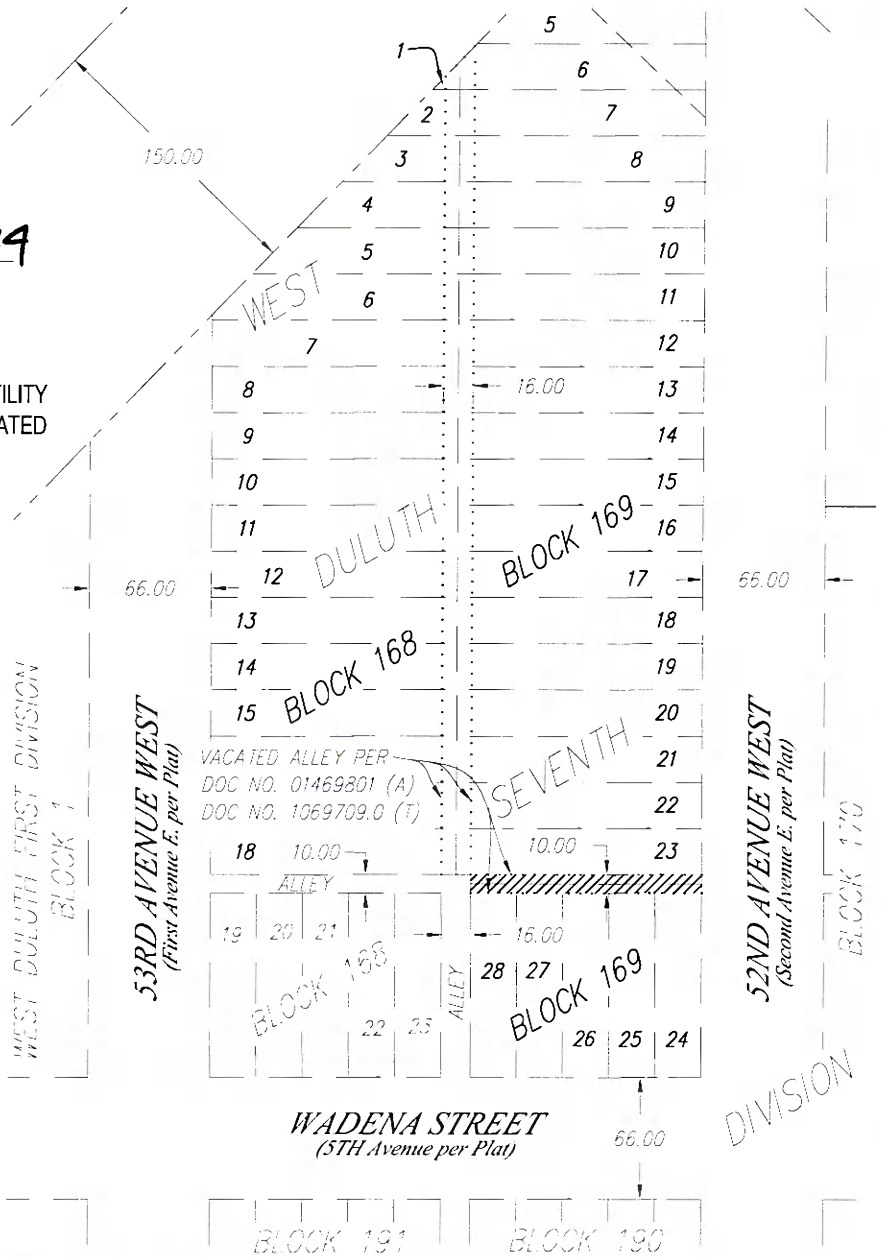
[Signature] 7-24-24
CITY ENGINEER

 = AREA OF RETAINED UTILITY EASEMENT TO BE VACATED



(SCALE IN FEET)

Basis of Bearing is Grid North,
St. Louis County Transverse
Mercator 96 Coordinate System.



I hereby certify that this plan, specification, or report was prepared by me or under my direct supervision and that I am a duly Licensed Land Surveyor under the laws of the State of Minnesota.

Print Name: Paul A. Vogel License # 44075

Signature: *[Signature]* Date: 7/24/2024

DATE PREPARED: 07/24/24

PROJ NO: 230100

FILE: 230100vExhib

SHEET 1 of 1 SHEETS



21 W. Superior St., Ste. 500 | Duluth, MN 55802 | 218.727.8446