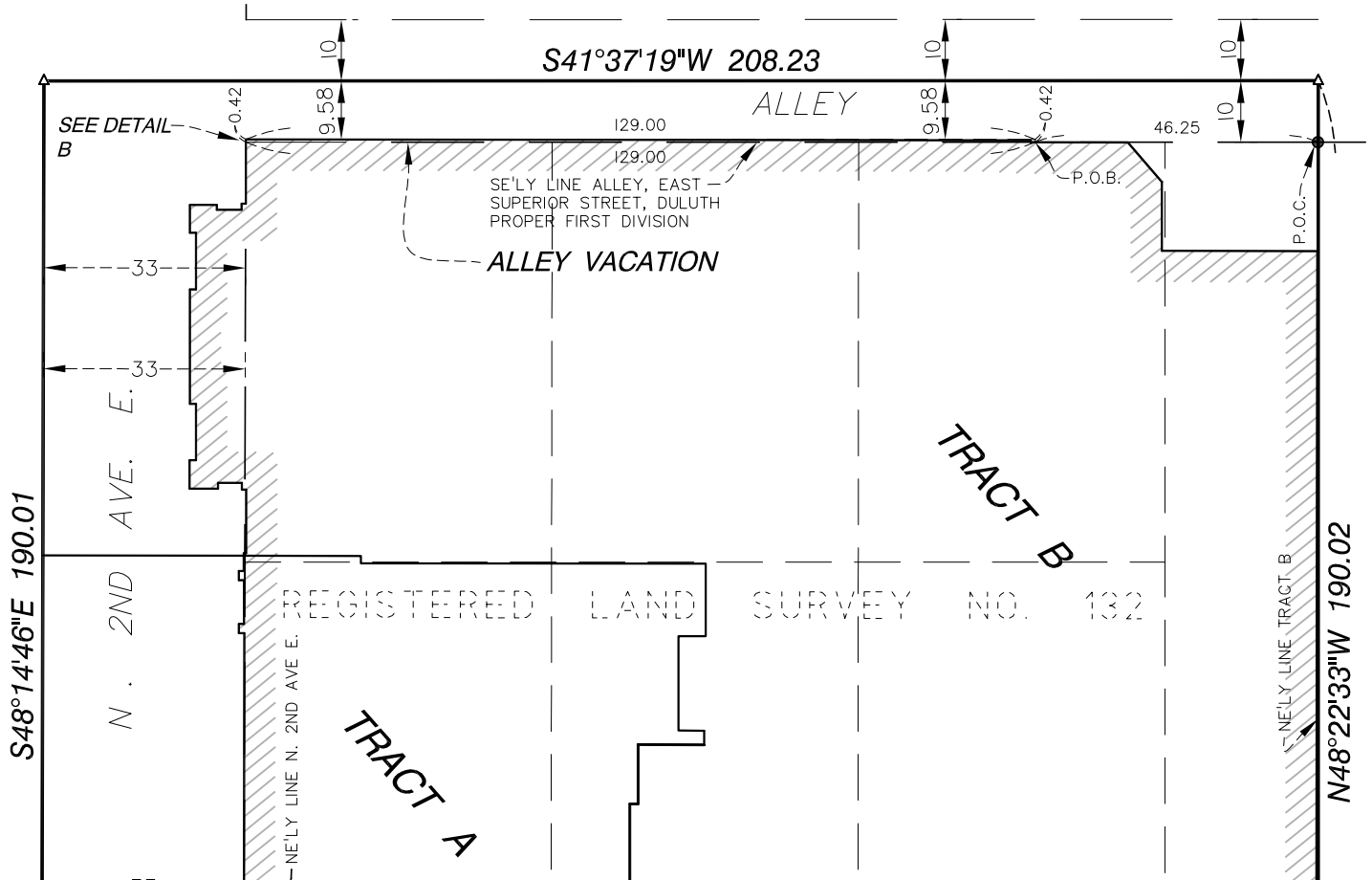


# EXHIBIT C



I hereby certify that this survey, plan, or report was prepared by me or under my direct supervision and that I am a duly Licensed Land Surveyor under the laws of the state of Minnesota.

DENNIS B. OLMSTEAD

---

Print Name

Don B. Whit

Signature

4/19/16

Date \_\_\_\_\_

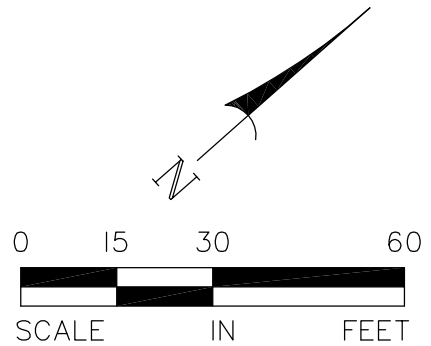
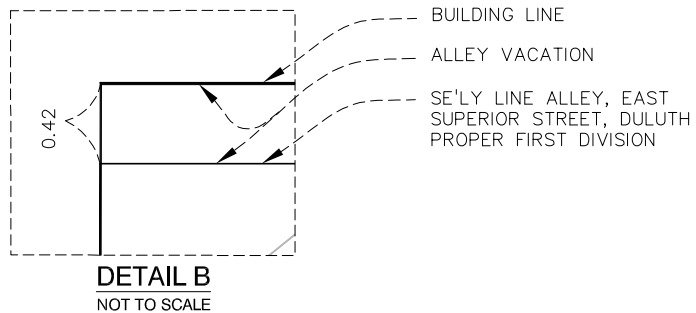
18425

License Number

Approved by the City Engineer of Duluth, MN.

this \_\_\_\_\_ day of \_\_\_\_\_ 20\_\_\_\_\_

By\_\_\_\_\_



Design File: 120096	Checked By: DBO
Dwg Name: vacation exhibit	Drawn By: DPE
Date: 4/19/16	Scale: 1"=30'

ALLEY VACATION EXHIBIT

NORSHOR THEATRE RESTORATION  
211 E. SUPERIOR ST, DULUTH, MN



**Alliant Engineering, Inc.**  
233 Park Ave S, Ste 300  
Minneapolis, MN 55415  
612.758.3080 MAIN  
612.758.3099 FAX  
[www.alliant-inc.com](http://www.alliant-inc.com)