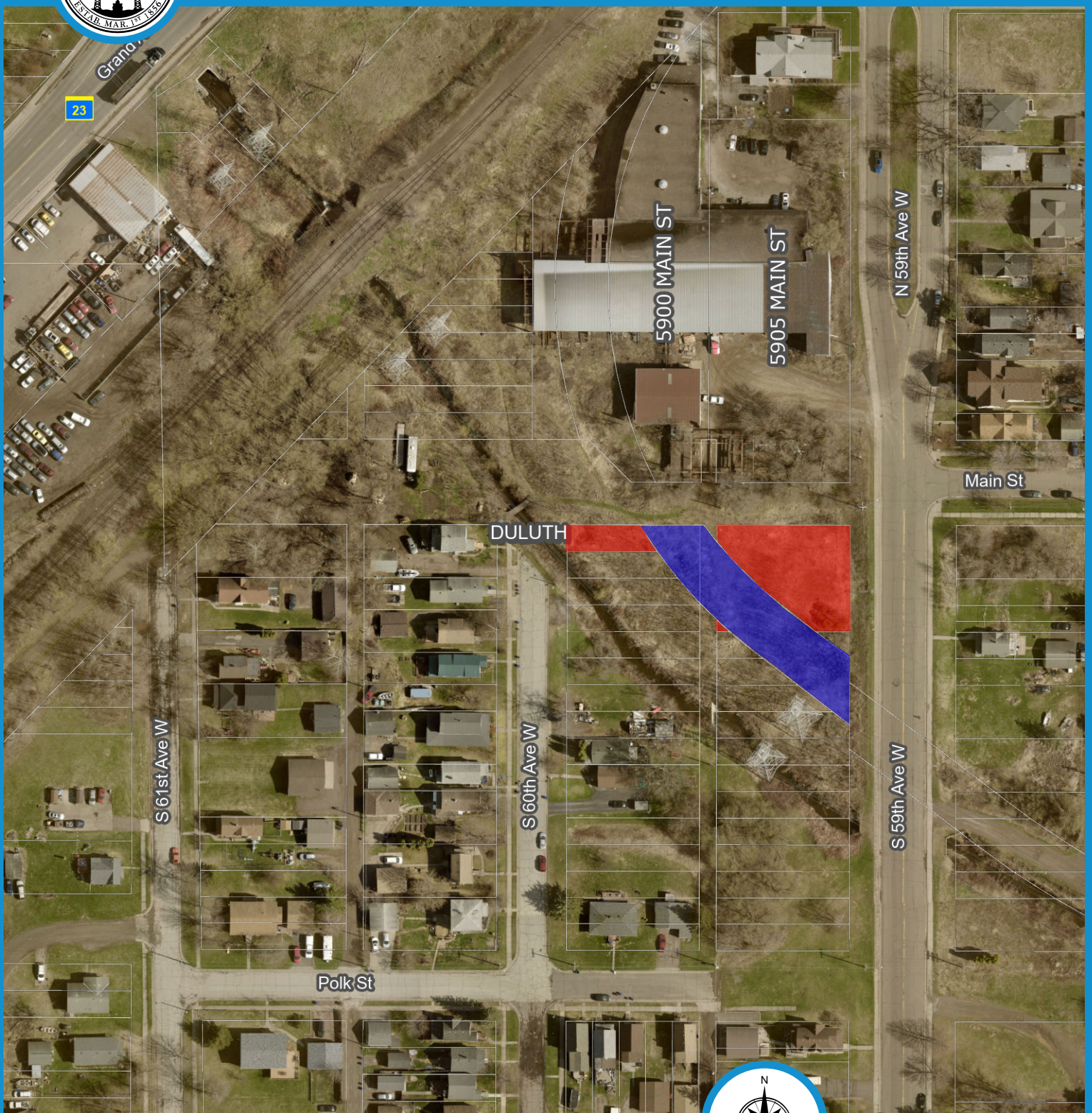




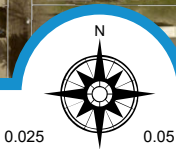
# EXHIBIT B



Tax-forfeited land to be acquired



Property already owned by the City of Duluth



County Land Explorer

St. Louis County [www.stlouiscountymn.gov/explorer](http://www.stlouiscountymn.gov/explorer) Minnesota

### Disclaimer

This is a compilation of records as they appear in the Saint Louis County Offices affecting the area shown. This drawing is to be used only for reference purposes and the County is not responsible for any inaccuracies herein

Map created using County Land Explorer  
[www.stlouiscountymn.gov/explorer](http://www.stlouiscountymn.gov/explorer)

© Copyright St. Louis County Minnesota | All Rights Reserved Printed: 8/23/2024

