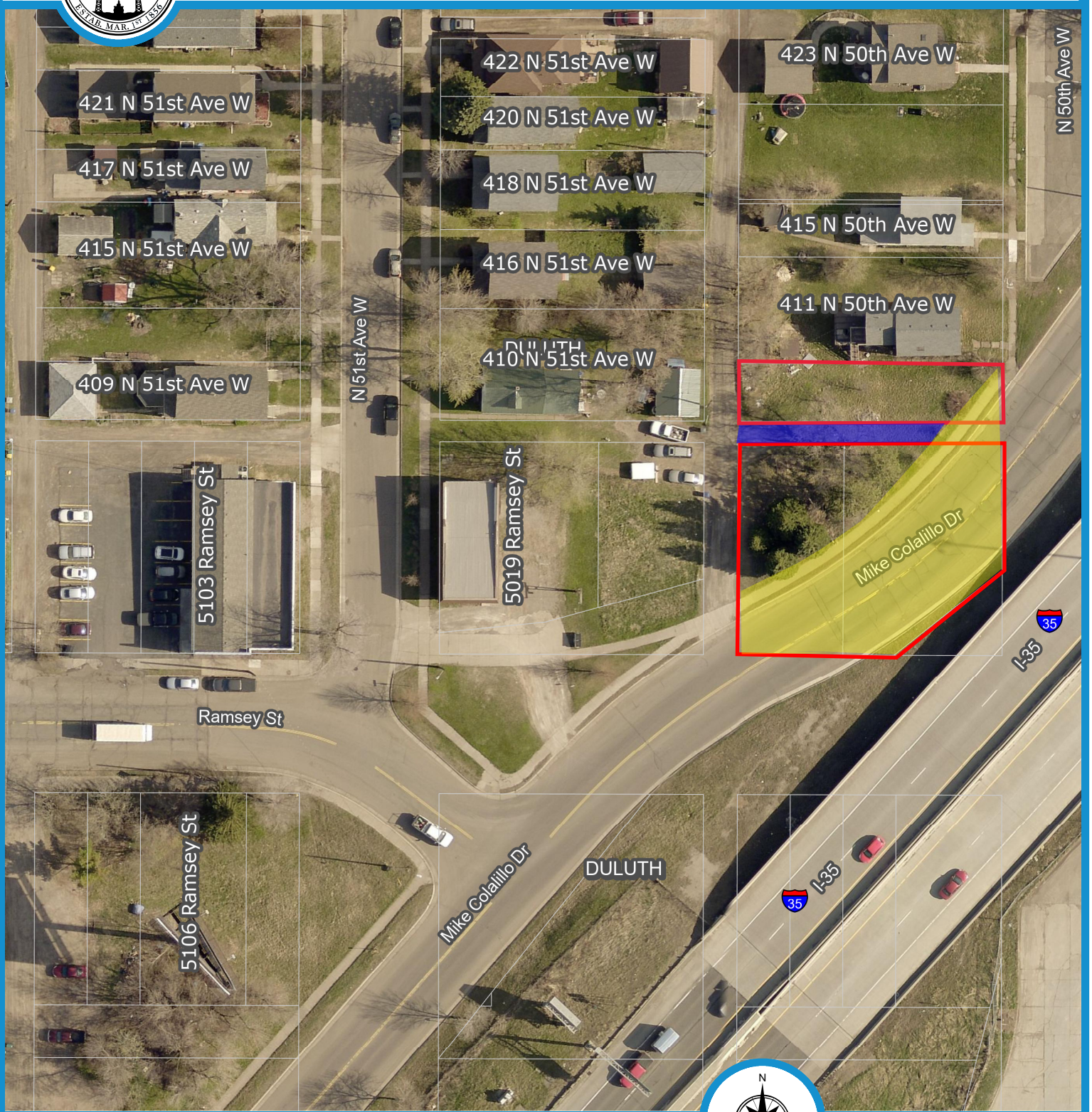





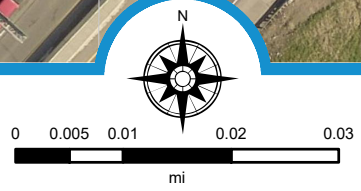


# Exhibit 3



-  Property Proposed to be Sold
-  Easement Area to be dedicated for street and utility purposes (approximate; subject to survey)
-  Portion of platted alley proposed to be vacated

Map created using County Land Explorer  
[www.stlouiscountymn.gov/explorer](http://www.stlouiscountymn.gov/explorer)



County Land Explorer  
St. Louis County [www.stlouiscountymn.gov/explorer](http://www.stlouiscountymn.gov/explorer) Minnesota

**Disclaimer**  
This is a compilation of records as they appear in the Saint Louis County Offices affecting the area shown. This drawing is to be used only for reference purposes and the County is not responsible for any inaccuracies herein

© Copyright St. Louis County Minnesota | All Rights Reserved Printed: 6/25/2021

