

ST. LOUIS RIVER CORRIDOR PARKS MINI-MASTER PLANS

JUNE 2016





Project Coordinator:

Lisa Luokkala
Duluth Parks & Recreation
411 West First Street
Duluth, MN 55802
Phone: 612-730-4312
Email: lluokkala@duluthmn.gov

www.DuluthMN.gov/parks

Consultants:



**THIS PLAN WAS ADOPTED BY THE
CITY OF DULUTH ON
XXXXX XTH, 2016.**

ACKNOWLEDGEMENTS:

Arrowhead Youth Soccer Association
COGGS – Cyclists of the Gitchee
Gumee Shores
Daughters of the American
Revolution (Greysolon Chapter)
Duluth Archaeology Center
Duluth Girls Fastpitch League
Fond du Lac Community Club
Harrison Community Club
Irving Community Club
Merritt Community Club
Minnesota Department of Natural
Resources
Morgan Park Community Club
Norton Park Community Club
Piedmont Community Club
Piedmont Youth Hockey Association
River Corridor Coalition
Riverside Community Club

STAFF ADVISORY GROUP:

Dale Sellner - Buildings & Grounds
Supervisor
Jim Shoberg - Parks & Recreation
Josh Abraham - Parks & Recreation
Tari Rayala - City Architect
Judy Gibbs - Trail & Bikeway
Coordinator
Pamela Page - Recreation Specialist
Kelly Fleissner - Maintenance
Operations

PARKS & RECREATION COMMISSION:

Edwin Hall (at large) - Chair
Thomas Albright (District 5)
K. Tiersa Dodge (District 4)
Andy Holak (Professional)
John Schmidt (District 3)
Erik Torch (Community Education)
Jon Welles (District 2)
Tjaard Breeuwer (District 1)
Patrick Contardo (at large)
Amanda Crosby (Commission on
Disabilities)
Michael Schraepfer (Land
Management)



CONTENTS

- 01 PROJECT BACKGROUND.....1-1
 - PROJECT PURPOSE AND BACKGROUND: ST. LOUIS RIVER CORRIDOR NEIGHBORHOOD PARKS GRANT FUND.....1-1
 - PROJECT SUMMARY & CONTEXT.....1-1
 - PLANNING PROCESS AND TIMELINE.....1-2
- 02 PARK MINI-MASTER PLANS.....2-1
 - HISTORICAL PARK.....2-1
 - FOND DU LAC PARK.....2-7
 - BLACKMER PARK.....2-13
 - SMITHVILLE PARK.....2-19
 - RIVERSIDE RECREATION AREA.....2-25
 - NORTON PARK.....2-31
 - GRASSY POINT PARK.....2-37
 - KEENE CREEK PARK.....2-43
 - MERRITT COMMUNITY RECREATION AREA.....2-49
 - HARRISON COMMUNITY RECREATION AREA.....2-55
 - PIEDMONT COMMUNITY RECREATION AREA.....2-61
- 03 IMPLEMENTATION.....3-1
 - OVERVIEW.....3-1
 - PARTNERSHIPS & FUNDING.....3-1
 - VOLUNTEER OPPORTUNITIES.....3-2



ST. LOUIS RIVER AS SEEN
FROM GRASSY POINT PARK



01. PROJECT BACKGROUND

Project Purpose and Background: St. Louis River Corridor Neighborhood Parks Grant Fund

Since 2011, the City of Duluth has increased planning and investment along the St. Louis River Corridor. Coordinated efforts of environmental cleanup, new job creation, increased housing options, and investment in infrastructure are underway. In 2014, the City passed the St. Louis River Corridor ½ and ½ Tourism Tax to fund improvements in the corridor. In recognition that parks and recreation are important components of the St. Louis River Corridor tourism experience, St. Louis River Corridor parks qualify for \$90,000 of ½ and ½ tax funding by securing a 9:1 match. In order to receive grant funding, each park must have a completed mini-master plan from which to prioritize improvements.

Project Summary & Context

This document is a compilation of mini-master plans for 11 neighborhood and multi-use parks in the St. Louis River Corridor. Each park's mini-master plan is a chapter in the document. The parks, from west to east, are: Historical Park, Fond du Lac Park, Blackmer Park, Riverside Park, Smithville Park, Norton Park, Grassy Point Park, Keene Creek Park, Merritt Community Recreation Area, Harrison Community Recreation Area, and Piedmont Community Recreation Area. Each park is unique in setting, context, use, issues, and needs.

The mini-master plans combined will serve as a long range plan to meet the St. Louis River Corridor's park and recreation needs. Plans for the parks have been developed in order to balance the desires of each neighborhood with recreation needs in the St. Louis River Corridor and the City as a whole, and be consistent with the overarching vision for the St. Louis River Corridor, the 2010 Parks and Recreation Master Plan, and the 2011 Trail and Bikeway Plan.

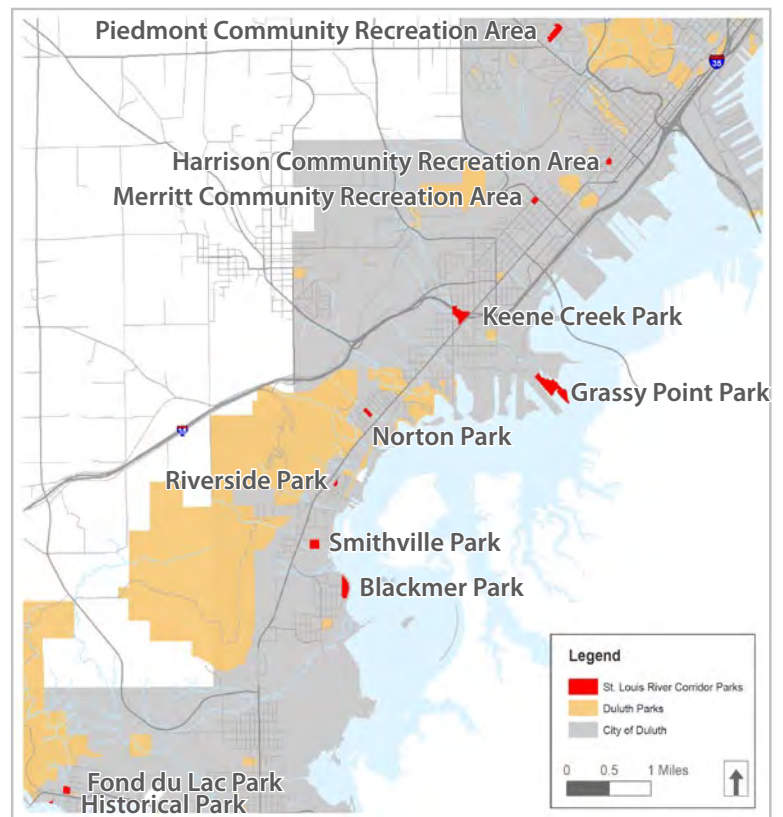


FIGURE 1.1 ST. LOUIS RIVER CORRIDOR PARKS

PUBLIC ENGAGEMENT SUMMARY:

- » Stakeholder Meetings – Sept 17-18, 2015
 - Fond du Lac, Historical, Blackmer, Smithville, Riverside Parks – September 17, 2015
 - Merritt, Harrison, Piedmont – September 17, 2015
 - Norton, Keene Creek, Grassy Point – September 18, 2015
- » Community Meetings – Oct 28-29, 2015
- » Online Input – November 2015
 - During the month of November, an online survey was posted on the Duluth Parks website. There were 288 responses combined for all parks.
- » Community Meeting to Review Draft Mini-Master Plans – Feb 4, 2016
- » Online Input – spring 2016

Planning Process and Timeline

The mini-master plans are based on input from city staff, city officials, and the general public. The mini-master planning process engaged the community and stakeholders through community meetings and online review. The plans focus on pragmatic solutions to replacing park infrastructure, addressing safety and ADA accessibility issues, access and connectivity, natural resource management, and improving aesthetics in each park. Improvements that are economically and environmentally sustainable over the long-term are paramount. Capital costs, maintenance and operations costs are identified in each chapter. Phasing has been identified according to three categories:

- » Short term (1-2 years) – outdoor facilities, site improvements, and natural resource improvements that can attract matching funds for the St. Louis River Corridor ½ and ½ Tourism Tax dollars; no building improvements are identified as short term
- » Long term (2-10 years) – park improvements that may take more funding and coordination to complete
- » Visionary (10+ years) – elements that are high in capital and maintenance costs that are not high priorities for the future of the park

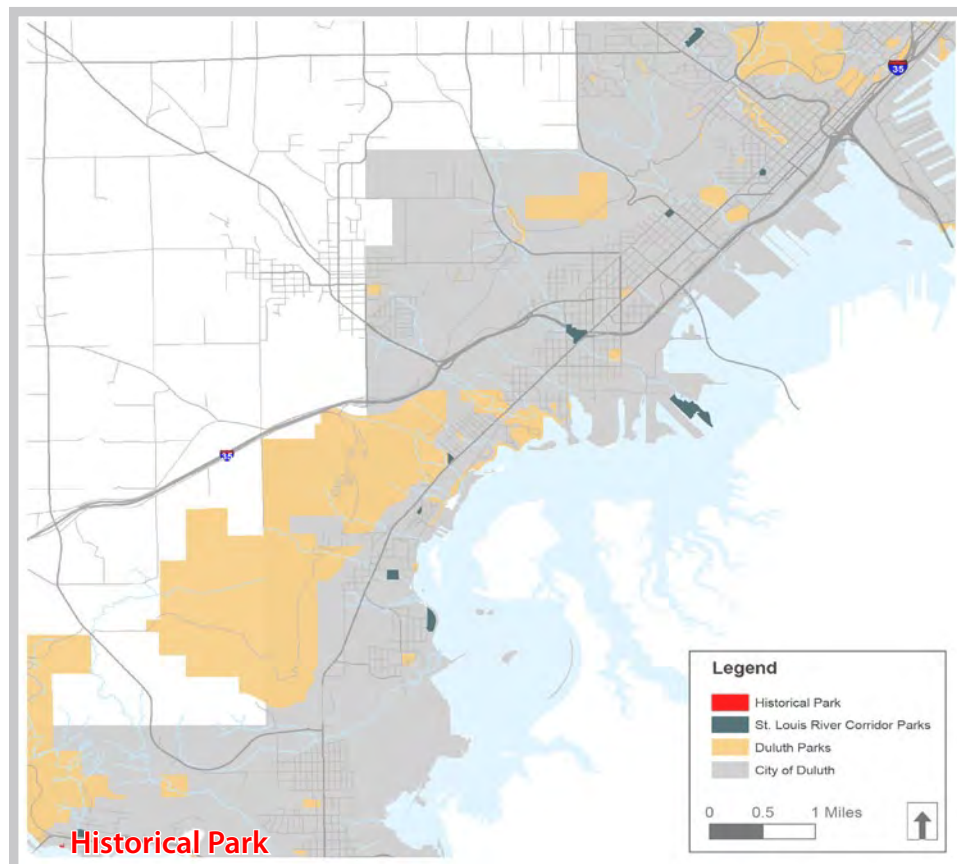
Note: Routine maintenance and repair of community centers will be completed by the City of Duluth but any major repair or remodel will trigger the closing of the building unless full repairs/remodel is completed by a community partner organization and a commitment by the partner to handle ongoing maintenance after that point.

02. PARK MINI-MASTER PLANS

HISTORICAL PARK

Summary and Overview

Historical Park is a relatively unknown park in the Fond du Lac neighborhood of west Duluth. It is a half-acre park, surrounded by a residential neighborhood, on the banks of the St. Louis River. It is located south of Hwy 23, less than ¼ mile from Fond du Lac Park. The park was formerly called Jacob Astor Park, and it was gifted to the City of Duluth from the Daughters of the American Revolution.



HISTORICAL PARK LOCATION MAP

Historical Park is a site that represents a larger surrounding area of cultural and historical significance. The following historical sites and features are located within or near the park:

- » An American Fur Company post
- » The first railroad, LS&M Railroad, entered town on the north side of Hwy 23
- » The oldest house in Duluth is nearby
- » Old depot
- » An Ojibwe village
- » A steamboat landing
- » A Hotel was on the island across from the park
- » It was the first flat ground below the rapids
- » The head of navigation on the St. Louis River
- » A Cemetery
- » The Montauk passenger excursion boat used to stop here
- » The first jail in Duluth was nearby

STRENGTHS/OPPORTUNITIES:

- » Great location for pelican viewing – potential to create and define bird watching areas
- » Panoramic views of the river exist in the park
- » History of the site includes many opportunities for interpretation
- » Potential location for river access, possible stop along the water trail
- » Opportunity for carry down canoe/kayak launch
- » Potential enhanced fishing access
- » Potential path and small clearing in the woods to encourage passive recreation in the park

ISSUES:

- » Lack of identity and interpretive signage in the park
- » Sensitivity to adjacent land owners, clarify property boundaries visually
- » Wooded parcel is overgrown with buckthorn
- » Street and sidewalk infrastructure are deteriorating; lack of defined parking areas
- » Lack of wayfinding (At intersection of Hwy 23 and 133rd Ave)
- » Eroding river bank could be stabilized with in-water habitat structures to improve fish habitat such as eddy creating structures, habitat logs, etc.
- » Stormwater runs off the street directly into the St. Louis River without treatment

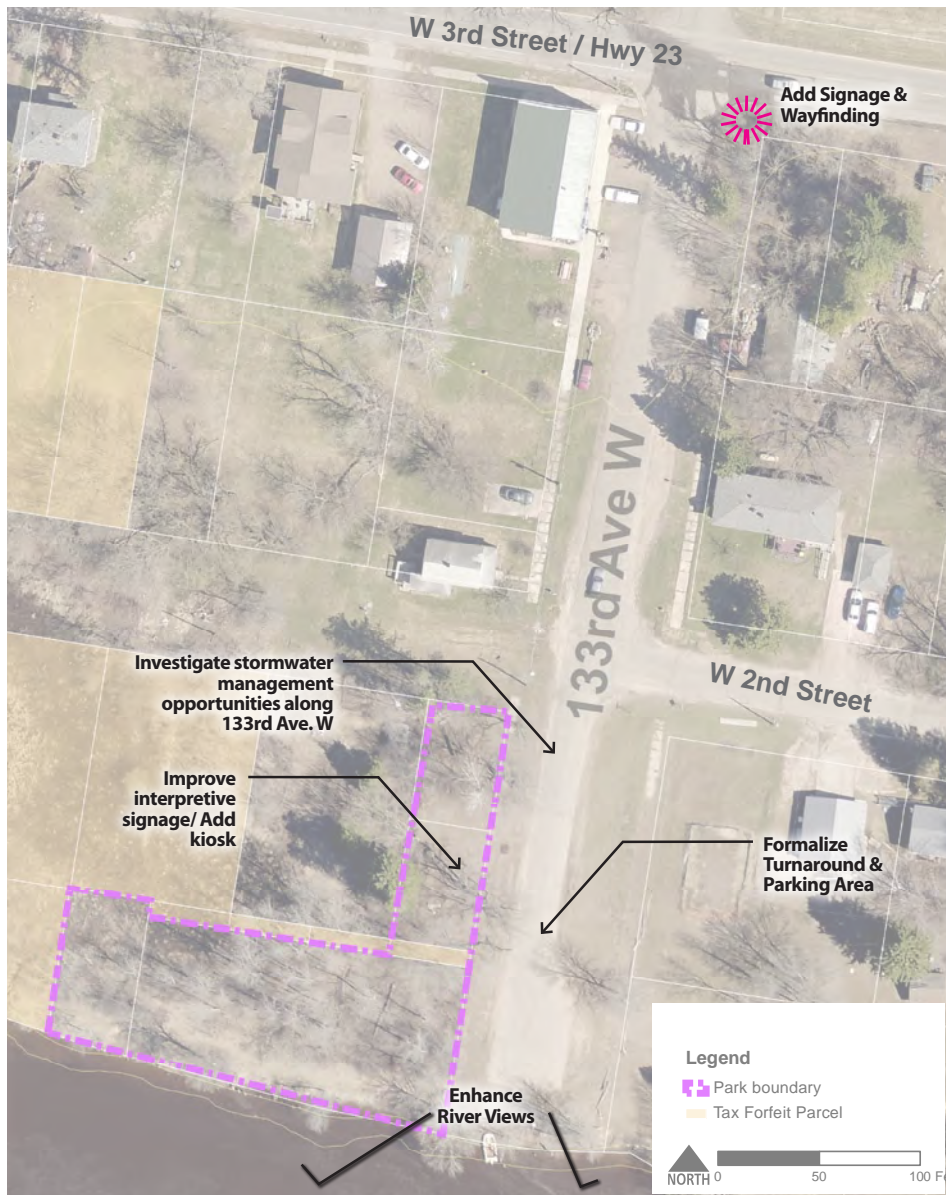


HISTORICAL PARK SITE INVENTORY

Existing Conditions

At the southern end of 133rd Ave W, Historical Park covers a small piece of wet and wooded land adjacent to the river. There are no formal features to the park other than a small mown area adjacent to road that features granite benches, a flagpole, and a plaque commemorating the history of the park.

In December of 2015, an Archaeological Phase I Survey for Historical Park was completed in coordination with the Duluth Archaeology Center and the City of Duluth Department of Parks and Recreation. Historical and archaeological findings from this report will be considered during any future improvements to the park. In addition, the 2015 Ethnographic Study of Indigenous Contributions to the City of Duluth will be referenced in future park improvements.



HISTORICAL PARK SITE ANALYSIS

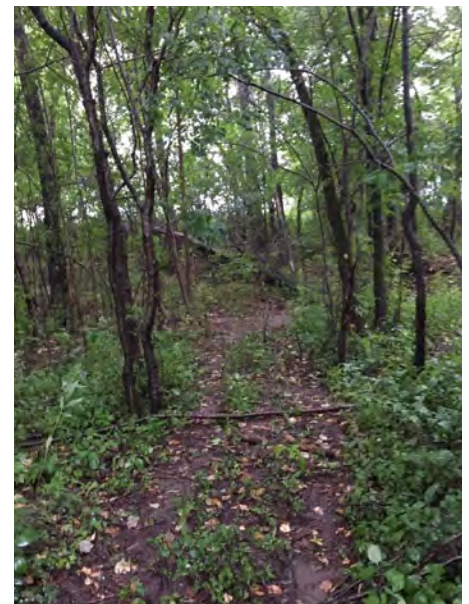
Needs Assessment/Input Summary

At the stakeholder and community meetings, a desire was expressed for every park in the corridor to have basic amenities, including a bench, a picnic table, and a grill. Wayfinding and directional signage to each park, within each park, and to nearby trails are also desired as a way to promote the parks. Historical interpretation and archaeological considerations are important to this site.

A desire was expressed by stakeholders to clarify the name and provide identity to the park. The name "Historical Park" is new and unfamiliar to many residents. As part of Minnesota's Clean Water, Land, and Legacy Amendment, there is a potential to write a grant for historical interpretation, art, and wayfinding elements for Historical Park.



Existing features include benches, a flag, and a historical monument



Current natural surface trails



Historical Park provides river access and is a local fishing spot

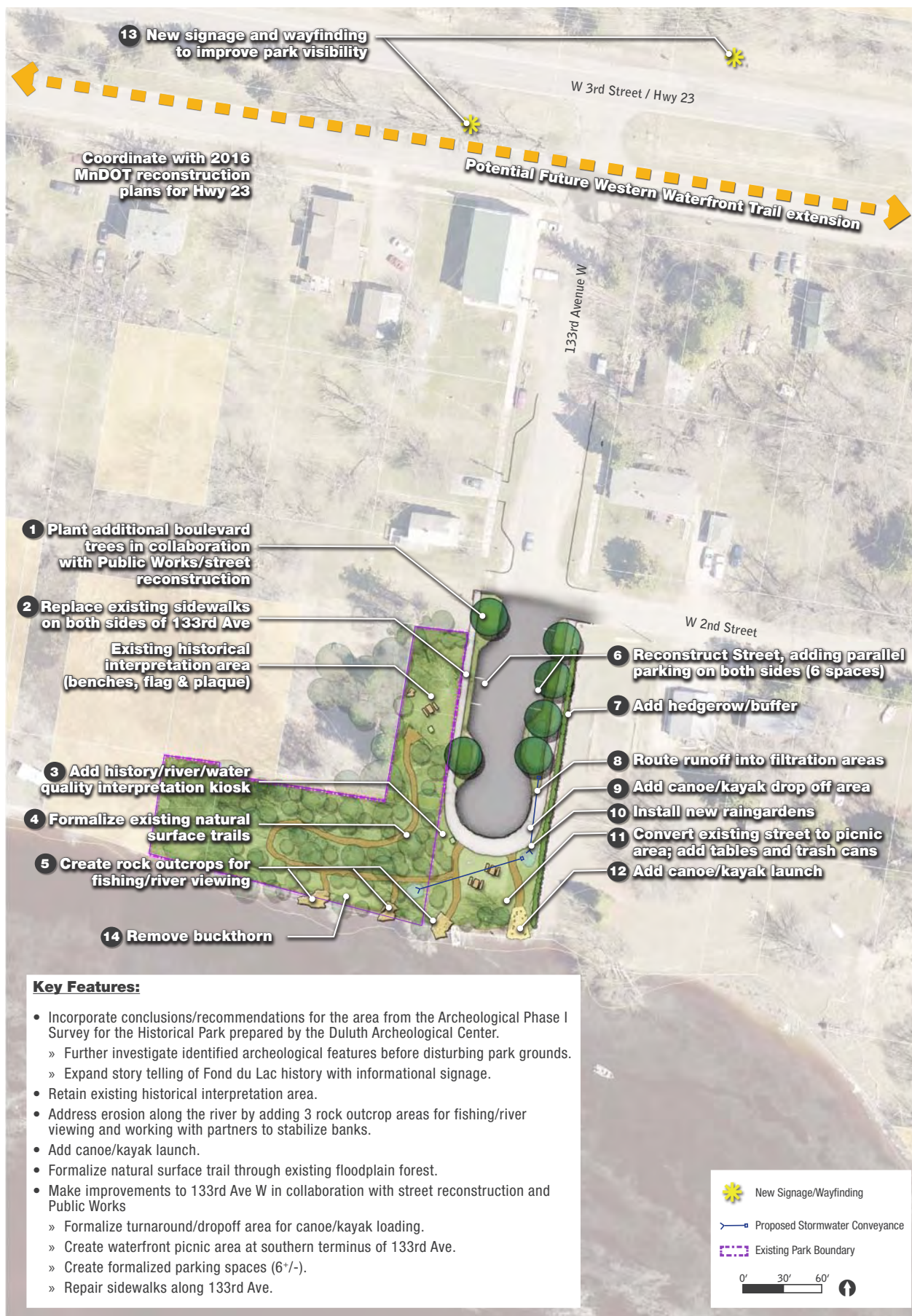


FIGURE 2.1 HISTORICAL PARK
MINI-MASTER PLAN

Concept Plan & Recommendations

The concept plan for Historical Park addresses identity, wayfinding, natural resources, and recreation improvements. Emphasis was placed on interpreting the history of the site, addressing river access, and providing small areas for gathering and enjoying the natural location along the St. Louis River. Parks will consult the Historic Preservation Commission and the Indigenous Commission moving forward with implementation of the plan.

Phasing & Cost Estimates PHASE 1: SHORT-TERM



ACTION			COST
#	CATEGORY	DESCRIPTION	
3	Circulation	Install New Kiosk	\$7,500
4	Circulation	Formalize Existing Nature Surface Trails	\$2,100
7	Vegetation	Add hedgerow/buffer	\$1,600
12	Recreation	Build New Canoe/Kayak Launch	\$5,000
13	Circulation	Install New Park Wayfinding Sign	\$2,000
14	Vegetation	Remove buckthorn and other invasive species	\$5,000
Total Short-Term Improvement Costs			\$23,200

PHASE 2: LONG-TERM



FIGURE 2.3 HISTORICAL PARK
LONG-TERM PHASING

ACTION			COST
#	CATEGORY	DESCRIPTION	
1	Vegetation	Plant Additional Boulevard Trees	\$2,800
2	Circulation	Replace Existing Sidewalk on 133rd Ave	\$21,000
5	Recreation	Create Rock Outcrop for Fishing/Viewing	\$60,000
6	Infrastructure	Reconstruct Street	\$-
8	Stormwater	Route street runoff into parkland	\$6,750
9	Stormwater	Install New Raingarden/Filtration Areas	\$6,750
10	Circulation	Add New Canoe/Kayak Drop-Off Area	\$5,600
11	Furnishings	Convert Existing Street Into Picnic Area - Add Picnic Tables & Trash Cans	\$5,000
Total Long-Term Improvement Costs			\$105,100
Total Short-Term Improvement Costs			\$ 23,200
Total Improvement Costs			\$128,300

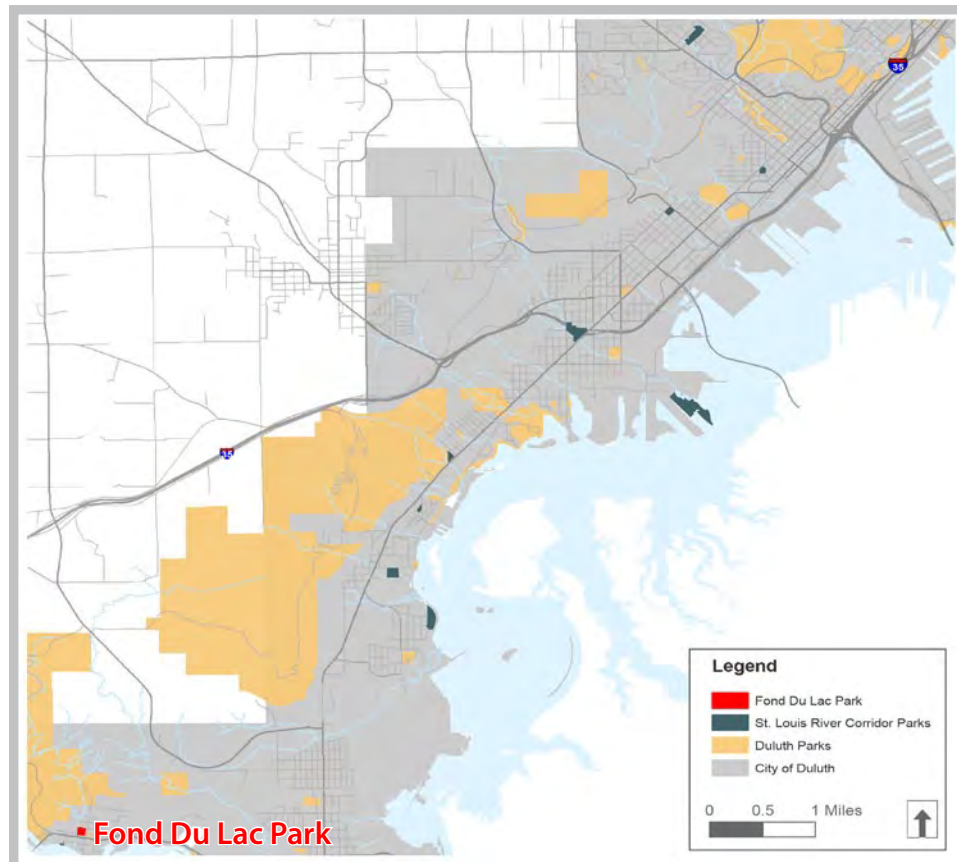


FOND DU LAC PARK

Summary and Overview

Fond du Lac Park is a 5-acre neighborhood park located on the far west side of Duluth. The park is bounded by Hwy 23 on the south and 131st Ave on the east side. Mission Creek forms the western boundary of the park. It is a channelized creek whose former alignment traveled from northwest to southeast through the park. This natural flow path has impacted stormwater drainage in the park. The flooding in 2012 damaged several park elements, including sediment deposits over the fields and play areas. The playground has been refurbished since then, and in 2014, new basketball and tennis courts were installed. The large, flat grassy area on the west side of the park, which has been used as a soccer field up until flood

damage occurred, is a rarity in Duluth. It is important to maintain this usable recreation space. About ¼ mile north of the park there is access to the Superior Hiking Trail and mountain bike trails.



FOND DU LAC PARK LOCATION MAP

STRENGTHS/ OPPORTUNITIES:

- » Park facilities are in good condition: playground, basketball court, tennis court
- » Open field is nice asset, but opportunity for improved turf conditions
- » Park is in a good location for hosting mountain biking and trail running events – opportunity to make improvement to allow for even staging including parking, field improvements, and power supply
- » Mission Creek is a nice asset in the park – opportunity to improve its banks with native landscape buffer
- » Drainage ditches exist on the north and south sides of the park – opportunity to improve stormwater infiltration and filtration with native plants

ISSUES:

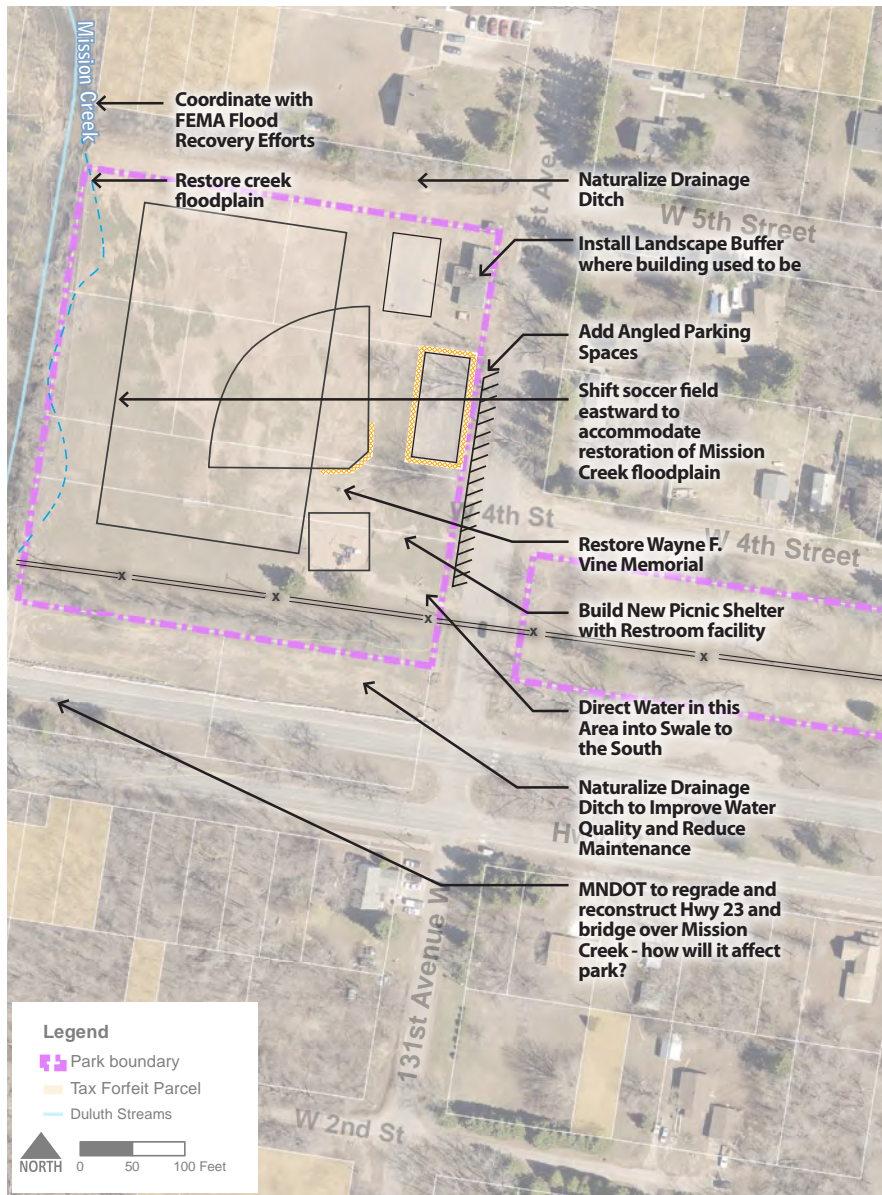
- » Memorial has been damaged – missing a piece
- » Stormwater drainage is an issue throughout the park, field damage still exists from 2012 flooding
- » Some ATV traffic through the park has been an issue



FOND DU LAC PARK SITE INVENTORY

Existing Conditions

Fond du Lac Park contains a playground, basketball court, and tennis court, which are all in good condition. Overlapping soccer and softball fields are in need of regrading and improved turf conditions. A park building was recently removed. An apple tree grove and memorial are located near the playground. The park has good vehicle access from Hwy 23 and pedestrian access for residents who live north of Hwy 23. Powerlines and poles run along the southern edge of the park between the recreation area and Hwy 23. An existing wayside and historical marker along Hwy 23 are part of the eastern portion of the park, which is unused today. Hwy 23 is currently being reconstructed by MNDOT.



FOND DU LAC PARK SITE ANALYSIS

Needs Assessment/Input Summary

At the stakeholder and community meetings, a desire was expressed for every park in the corridor to have basic amenities, including a bench, a picnic table, and a grill. Wayfinding and directional signage to each park, within each park, and to nearby trails are also desired as a way to promote the parks.

A desire was expressed by representatives of Arrowhead Youth Soccer to improve the soccer field conditions. The organization stopped using the field for practice after the flood damage occurred.

Since the park building has been removed, neighbors would like a picnic shelter to provide shade and be a gathering space in the park. A shelter could also be a good feature for housing power supplies for potential events in the park. A temporary bathroom is desired and was listed as a priority in the online survey.



View of the park looking south from the existing soccer field



Mission Creek passes through the western side of the park



The historic bridge over Mission Creek will be replaced with the Hwy 23 reconstruction in 2016



The existing play equipment is in good condition



FIGURE 2.4 FOND DU LAC PARK
MINI-MASTER PLAN

Concept Plan & Recommendations

The concept plan for Fond du Lac Park addresses stormwater and natural resources, athletic field improvements, and new facilities. Emphasis was placed on maintaining and enhancing the neighborhood quality of the park, improving the general aesthetics and usability, and providing features needed for potential event users.

Natural resource improvements include restoring the streambank vegetation and creating an accessible floodplain, which would widen the area the stream flows through and provide a floodplain bench. While reducing the bank slope would mean losing a bit of the flats in the upland part of the park, it would make the stream much more accessible to anglers as well as kids just wanting to explore the stream.

Phasing & Cost Estimates PHASE 1: SHORT-TERM



FIGURE 2.5 FOND DU LAC PARK SHORT-TERM PHASING

ACTION			COST
#	CATEGORY	DESCRIPTION	
2	Vegetation	Improve Creek Buffer with Woodland Establishment-Saplings, Shade, and Understory Trees	\$ 9,500
3	Recreation	Improve Existing Soccer Field	\$50,000
4	Demolition	Remove Existing Miscellaneous Fence Components	\$ 2,500
5	Vegetation	Naturalize Drainage Swale (South)	\$ 1,600
6	Infrastructure	Improve playground drainage	\$10,000
7	Vegetation	Naturalize Drainage Swale (North)	\$ 1,600
8	Vegetation	Plant New Shade Trees West of Basketball Court	\$ 2,000
9	Vegetation	Create Landscape Buffer	\$ 1,600
12	Demolition	Remove Existing Backstop	\$ 500
14	Buildings	Build New Port-a-Potty Enclosure	\$ 2,000
15	Infrastructure	Build New Decorative Wood Fence	\$ 5,000
16	Circulation	Install New Park Wayfinding Sign	\$ 1,000
18	Circulation	Install New Kiosk	\$ 7,500
19	Circulation	Install New Park Sign & Wayfinding Sign	\$ 6,000
21	Vegetation	Remove invasive species	\$ 5,000

Total Short-Term Improvement Costs **\$105,800**

PHASE 2: LONG-TERM



FIGURE 2.6 FOND DU LAC PARK
LONG-TERM PHASING

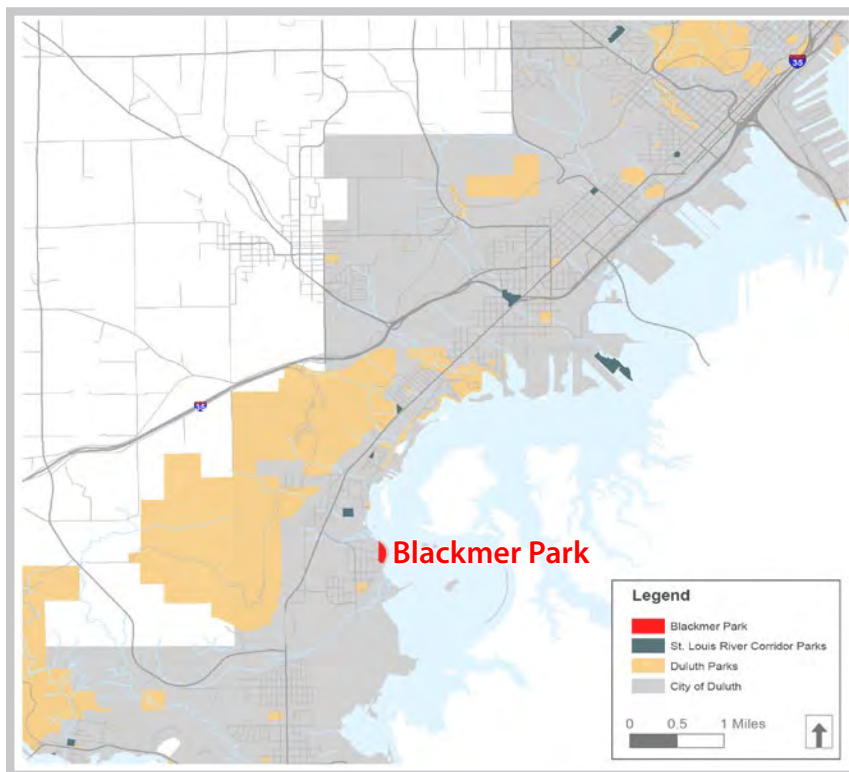
ACTION			COST
#	CATEGORY	DESCRIPTION	
1	Natural Resources	Restore Streambank and Create Accessible Floodplain	\$150,000
10	Furnishings	Additional Picnic Tables (4)	\$ 8,000
11	Parking	Create On-street Angled Parking	\$ 70,000
13	Public Art	Restore Wayne F. Vine Memorial	TBD
17	Buildings	Build new Picnic Shelter	\$ 60,000
20	Circulation	Add Pedestrian Crossing Amenity	\$ 10,000
Total Long-Term Improvement Costs			\$298,000
Total Short-Term Improvement Costs			\$105,800
Total Improvement Costs			\$403,800



BLACKMER PARK

Summary and Overview

Blackmer Park is a 10-acre park in the Morgan Park neighborhood. The park is heavily used for youth soccer and softball games. Much of the park is wooded and the entire eastern edge of the park is adjacent to the St. Louis River with panoramic views through the trees. There is the potential for the future Western Waterfront Trail to travel along the river side of the park and connect to natural corridors that exist to the north and south. Today the Lake Superior & Mississippi rail line exists along the river's edge and hosts a historical train route tour on the weekends.



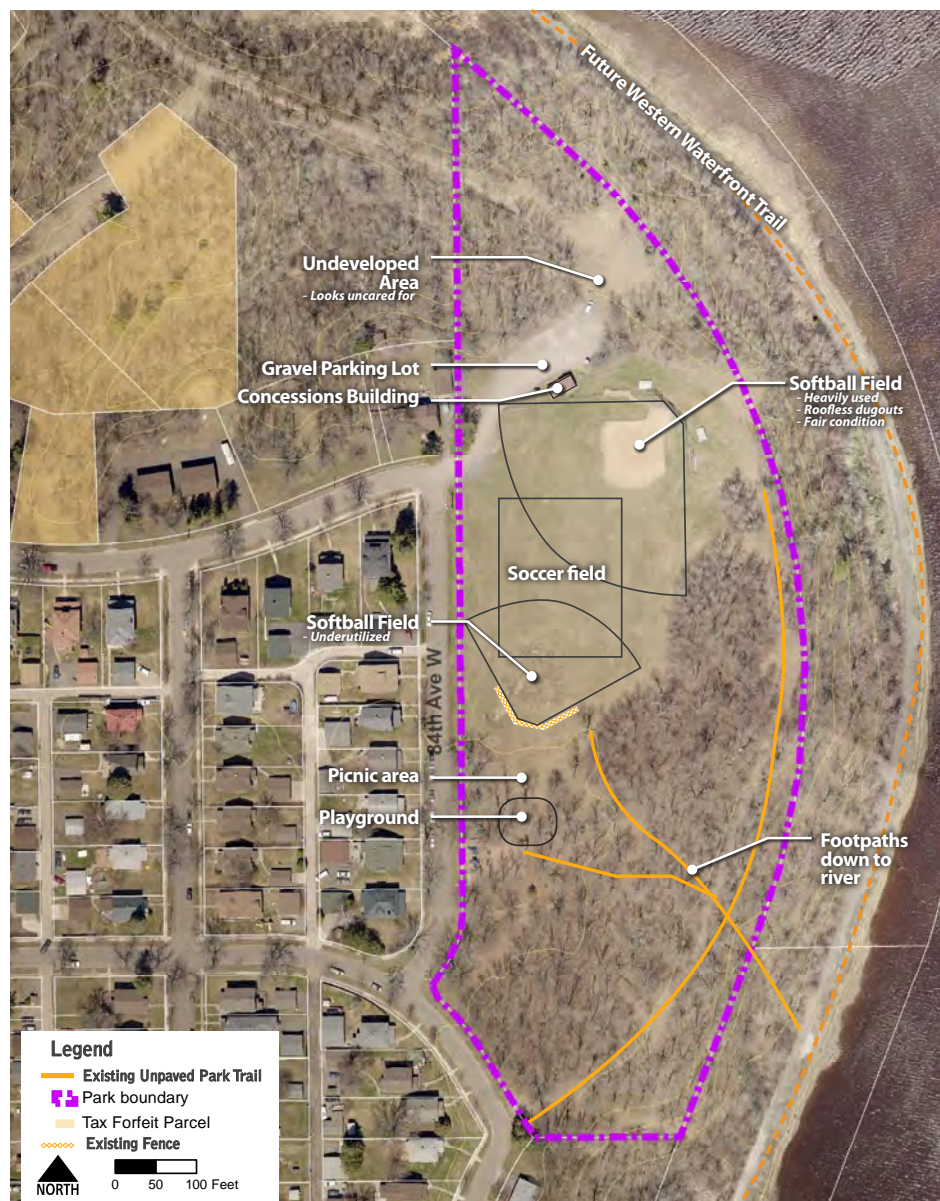
BLACKMER PARK LOCATION MAP

STRENGTHS/ OPPORTUNITIES:

- » Park is well-used and loved by neighbors – there is an opportunity to spruce it up and make minor improvements to improve functionality
- » Softball field is in fair condition, but could use minor improvements, including addition of ag-lime on the infield and new dugouts with rooves
- » Wooded area is a nice asset to the park – invasive tree thinning could benefit the existing native trees, new trees could be planted near playground
- » Playground is in a pleasant setting with natural shade trees – opportunity to replant trees that have died in past years

ISSUES:

- » Parking is unorganized and unregulated – gravel parking lot needs improvements
- » Undeveloped, open space north of the gravel parking lot is an eye sore
- » Access to the river is limited and informal/unsafe
- » Some erosion exists along footpaths that lead down to the river
- » Lack of permanent restroom and drinking water



BLACKMER PARK SITE INVENTORY

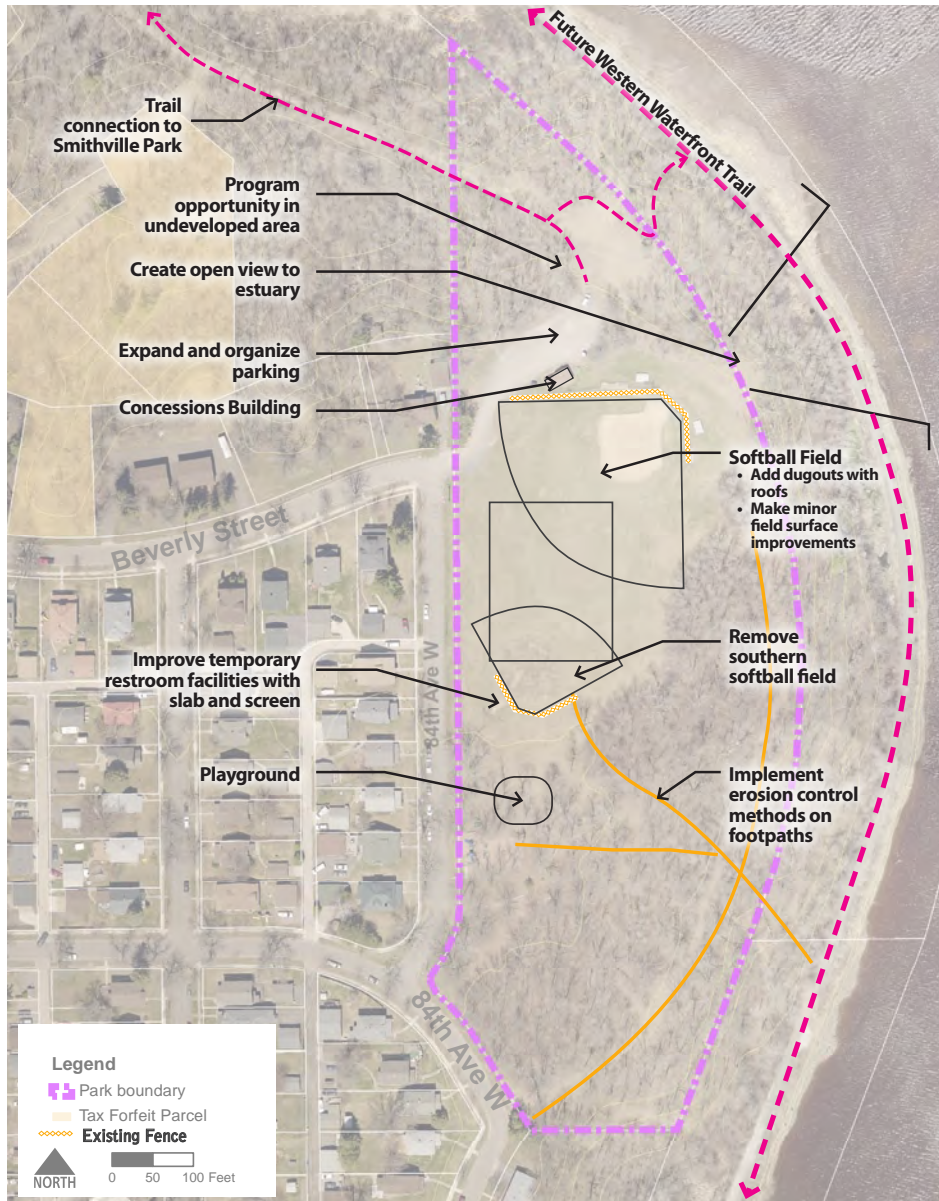
Existing Conditions

Blackmer Park contains one well-used softball field with a small concessions building and gravel parking lot. In the fall, soccer fields are set up overlapping the outfield. The soccer and softball associations work well together managing the seasons and usage of the fields. A small playground exists south of the athletic fields surrounded by large oaks and maples. Several footpaths lead down the slope through the woods to the river's edge.

Needs Assessment/Input Summary

At the stakeholder and community meetings, a desire was expressed for every park in the corridor to have basic amenities, including a bench, a picnic table, and a grill, which do exist in Blackmer Park. Maintaining and updating these basic amenities is desired. Wayfinding and directional signage to each park, within each park, and to nearby trails are also desired as a way to promote the parks.

Some basic infrastructure and facility improvements are needed in Blackmer



BLACKMER PARK SITE ANALYSIS

Park. There is a desire to maintain restroom facilities at the park, either with a structure to house a temporary porta-potty or with the addition of a permanent restroom building. The current parking lot is gravel and unmarked – there is a desire to pave the lot and add barriers between the park and parking lot to prevent cars from parking on the grass. Athletic field improvements are desired, such as grading the fields, updating surfaces, and providing dugouts on the softball field.

Area residents access the river today using informal footpaths through the woods. Some of these paths are in need of erosion control improvements, accessible steps to traverse steep areas, and formalized river viewing locations. There is a desire from park neighbors to provide a safe crossing of the rail line to a new dock on the river for fishing, wildlife viewing, and kayak/canoe launching. Neighbors also welcome a future trail connection to Smithville Park. Park users like the large oaks, maples, and basswood that surround the playground/picnic area and – they would like more of these trees planted to provide future growth when older trees die. Management of the entire forested area is desired.



The existing playground has new equipment



The softball field at Blackmer is heavily used



Soft surface trails connect visitors to the river



The existing rail corridor on the banks of the St. Louis River

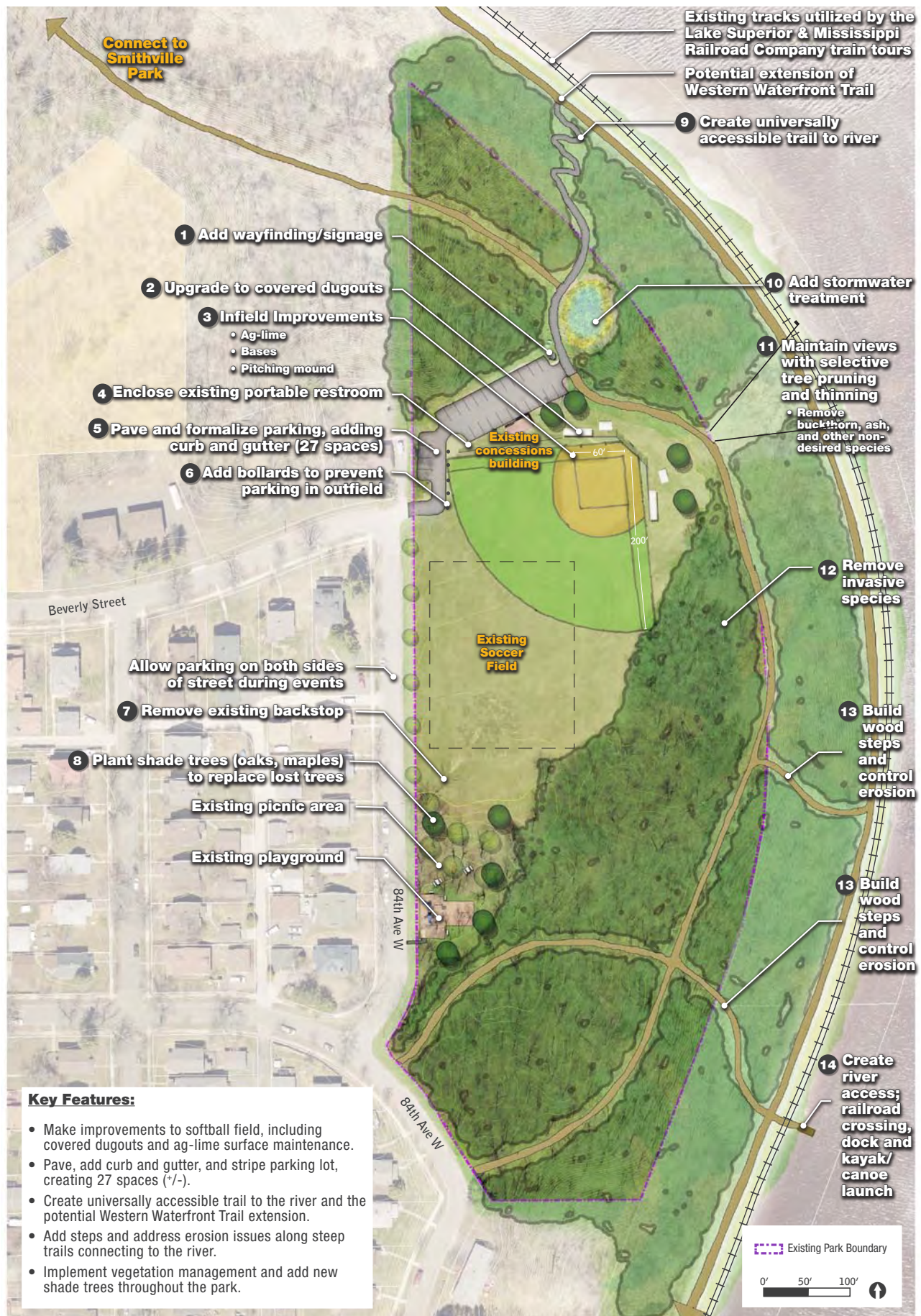


FIGURE 2.7 BLACKMER PARK
MINI-MASTER PLAN

Concept Plan & Recommendations

The concept plan for Blackmer Park addresses athletic field improvements, river access, and natural resources in the park. Priorities include maintaining and enhancing the good functionality of the park today and formalizing some of the informal features in the park.

Phasing & Cost Estimates

PHASE 1: SHORT-TERM

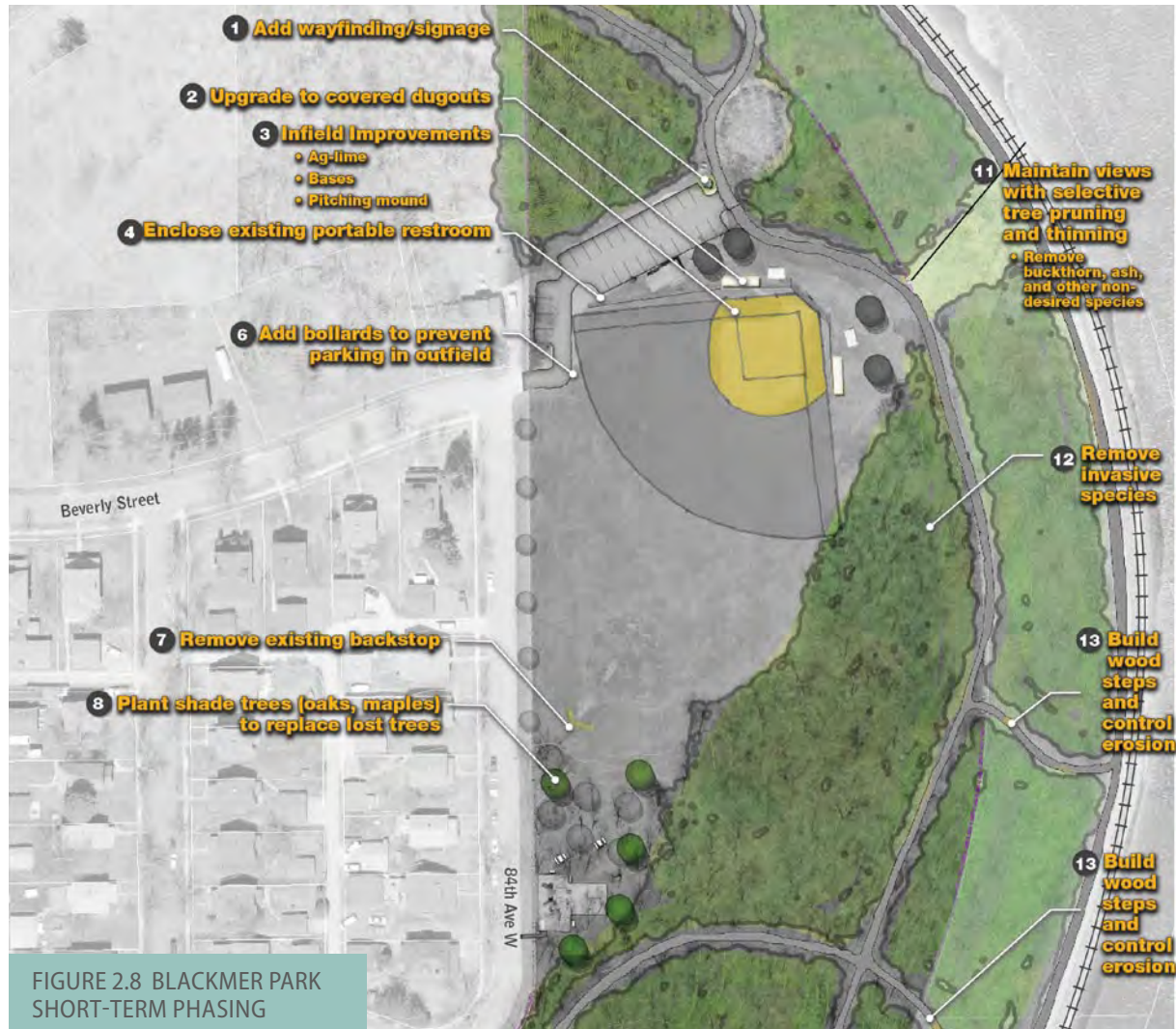


FIGURE 2.8 BLACKMER PARK SHORT-TERM PHASING

ACTION			COST
#	CATEGORY	DESCRIPTION	
1	Circulation	Install New Park Wayfinding Sign	\$1,000
2	Recreation	Build New Covered Dugout	\$30,000
3	Recreation	Improve Infield	\$5,000
4	Buildings	Build New Port-a-Potty Enclosure	\$2,000
6	Infrastructure	Install New Bollards	\$2,500
7	Demolition	Remove Existing Backstop	\$500
8	Vegetation	Plant New Shade Trees	\$2,000
11	Vegetation	Prune and Thin Existing Trees to Create View	\$5,000
12	Vegetation	Remove invasive species	\$18,000
13	Circulation	Build New Wood Steps and Control Erosion	\$1,200
Total Short-Term Improvement Costs			\$67,200

PHASE 2: LONG-TERM

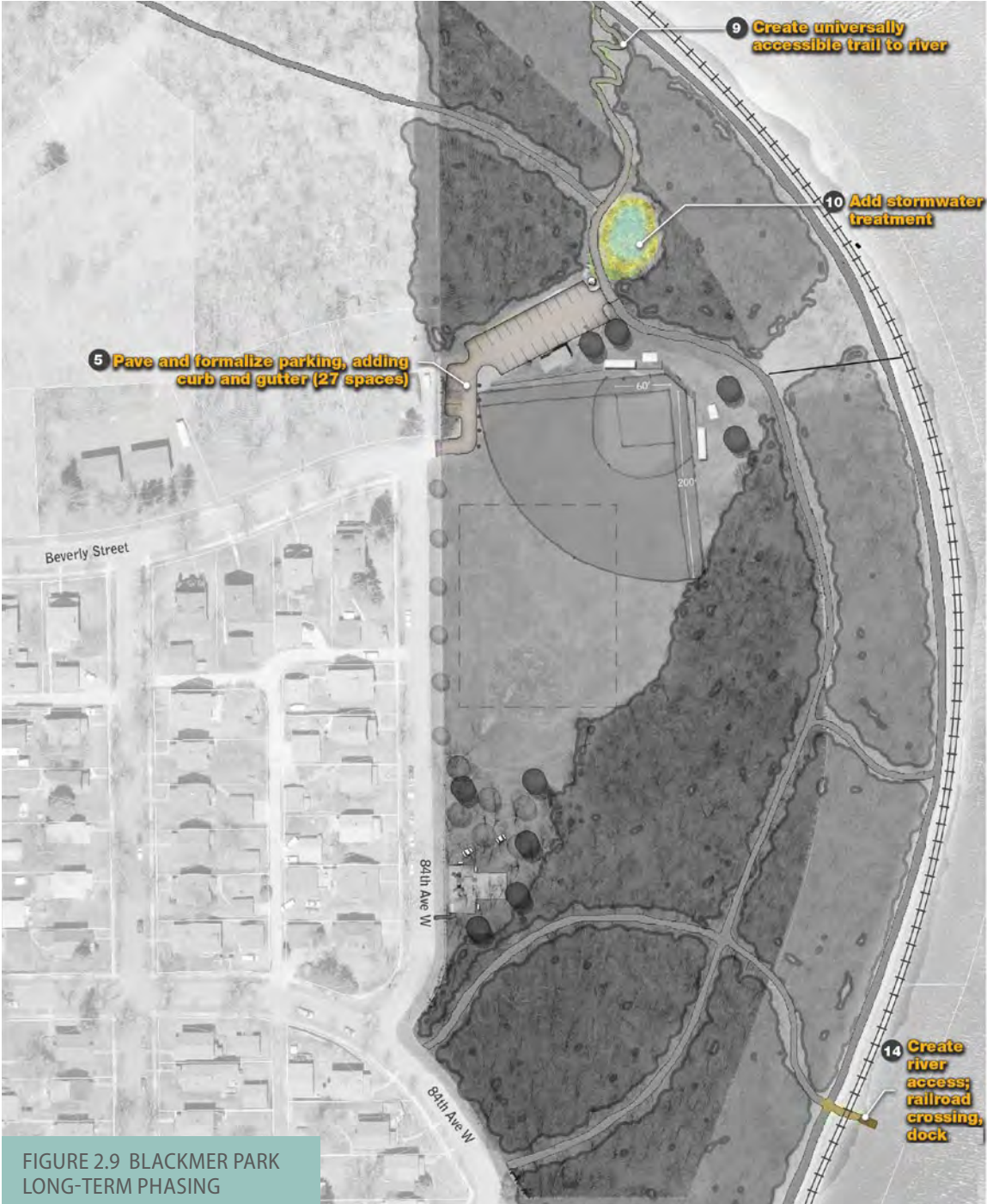


FIGURE 2.9 BLACKMER PARK LONG-TERM PHASING

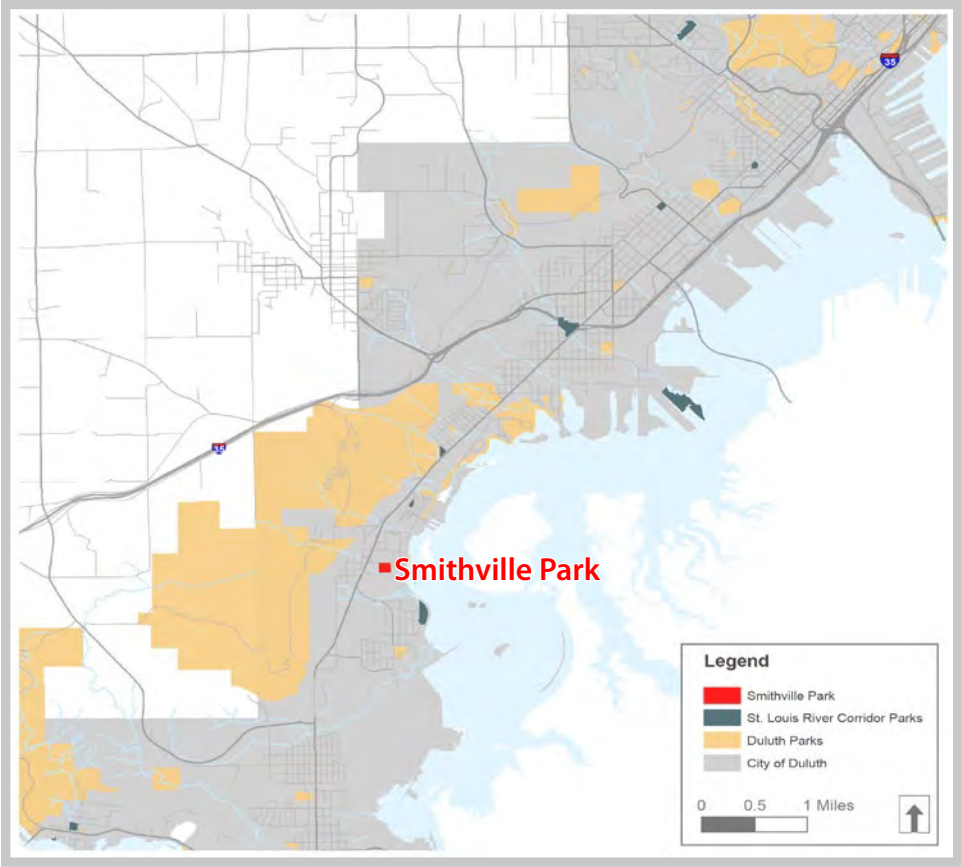
ACTION			COST
#	CATEGORY	DESCRIPTION	
5	Circulation	Build New Paved Parking Lot	\$94,500
9	Circulation	Build New 6' Gravel Trail	\$5,000
10	Stormwater	Install New Raingarden	\$67,500
14	Recreation	Build New Fishing Dock	\$50,000
Total Long-Term Improvement Costs			\$217,000
Total Short-Term Improvement Costs			\$67,200
Total Improvement Costs			\$284,200



SMITHVILLE PARK

Summary and Overview

Smithville Park is a relatively unknown, unused, and undeveloped seven-acre park in the Smithville neighborhood just east of Grand Avenue.



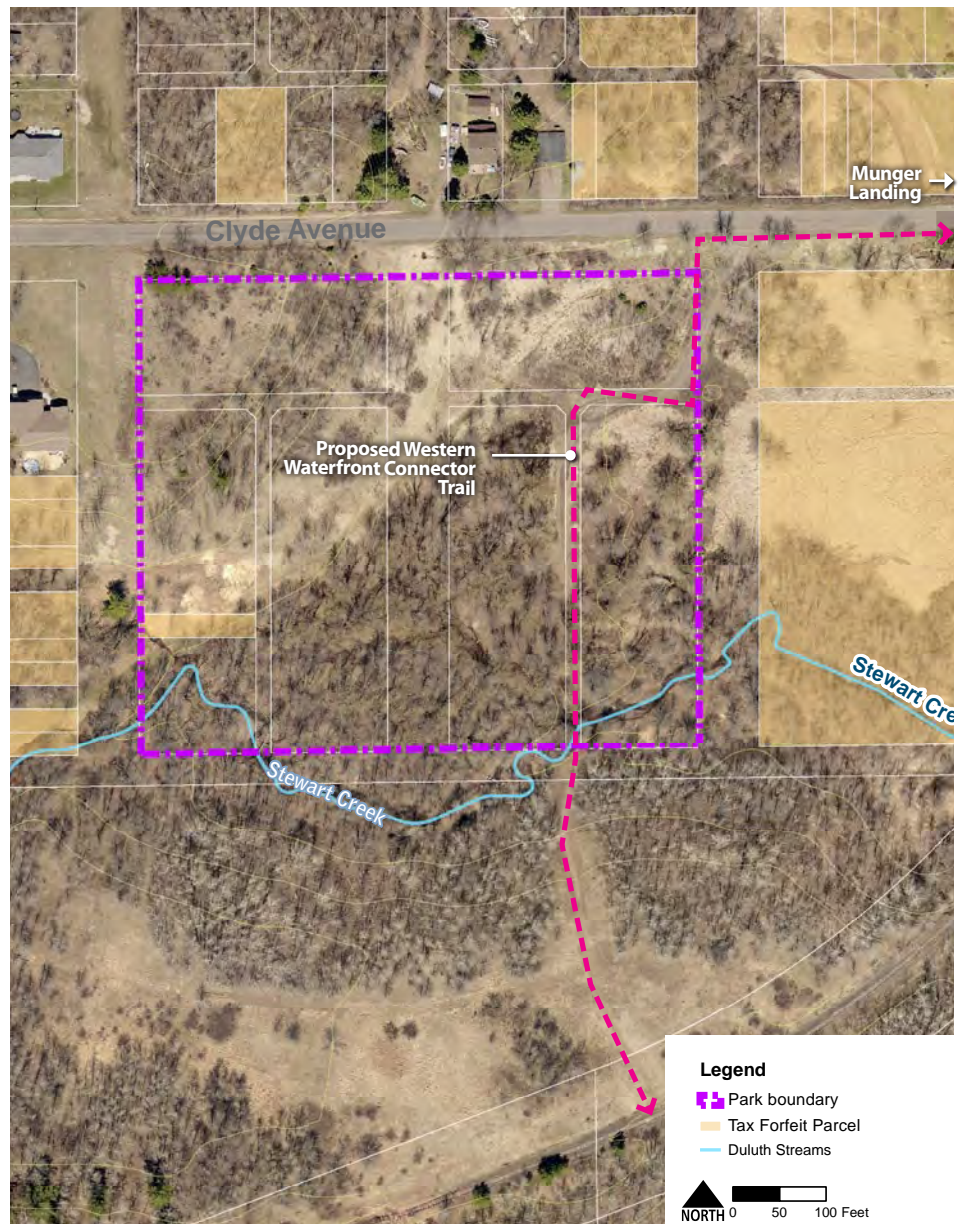
SMITHVILLE PARK LOCATION MAP

STRENGTHS/ OPPORTUNITIES:

- » Park provides natural corridor with potential for trail connections to Blackmer Park and future residential development along Grand Ave
- » Preserved natural space
- » The park could serve as a trailhead for the future Western Waterfront Trail

ISSUES:

- » Lack of awareness that park exists
- » Soft surface trail exists, but Stewart Creek is not crossable



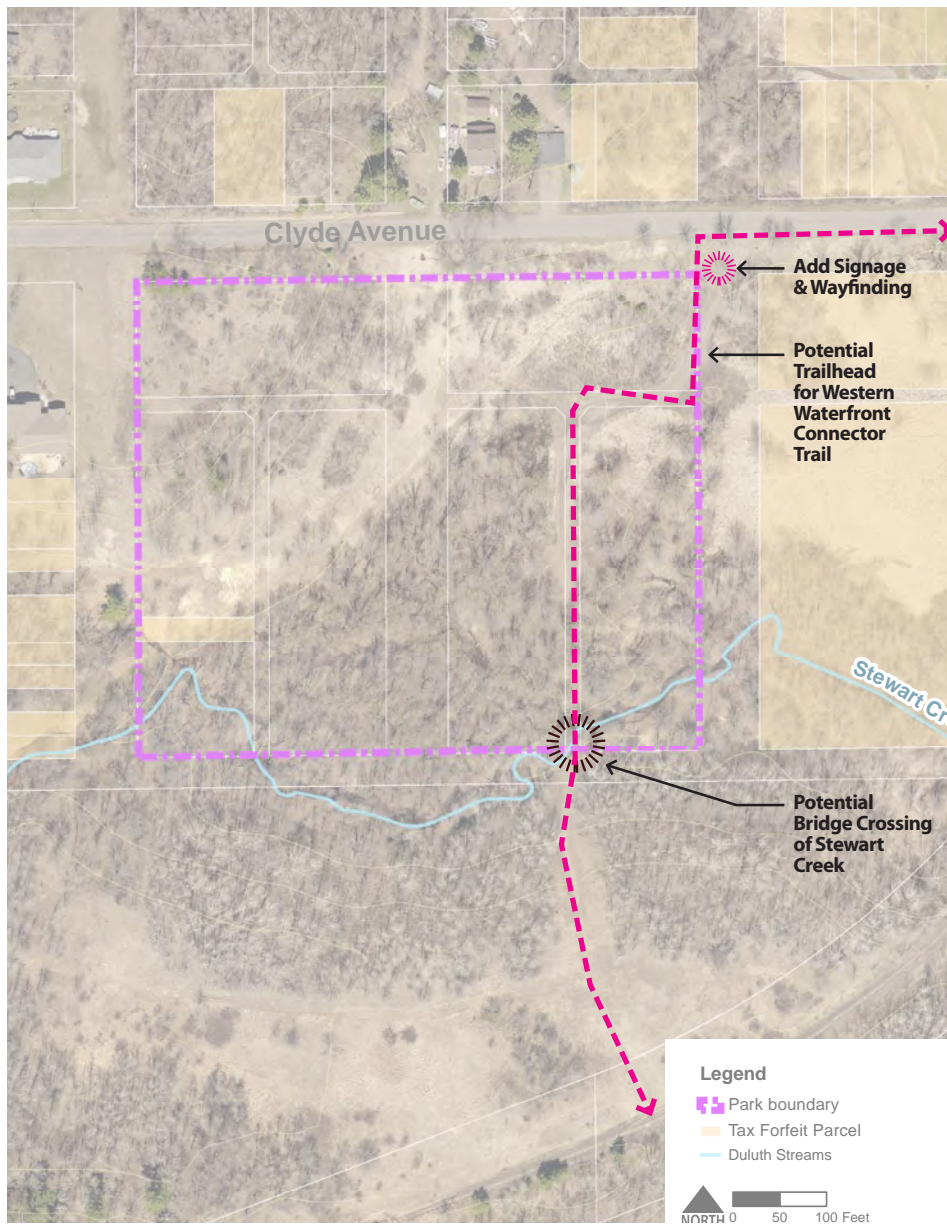
SMITHVILLE PARK SITE INVENTORY

Existing Conditions

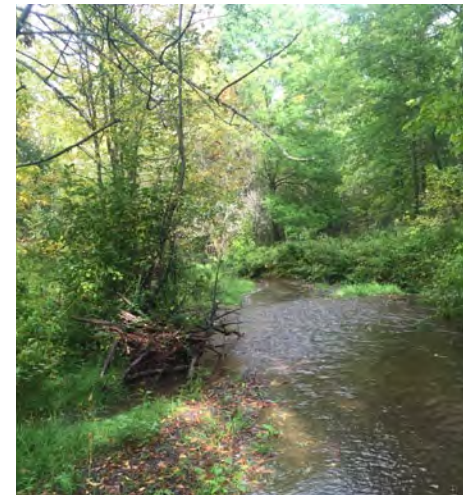
Today Smithville Park is covered by woods and wetlands. An informal, soft surface trail traverses the park from Clyde Ave at the northeast corner of the park to the southeast corner where Stewart Creek forms a natural barrier along the trail.

Needs Assessment/Input Summary

At the stakeholder and community meetings, a desire was expressed for every park in the corridor to have basic amenities, including a bench, a picnic table, and a grill. Smithville Park may have the need for a bench when the trail is developed in the near future, but picnic facilities will likely not be provided at Smithville until the park becomes more used. Wayfinding and directional signage to each park, within each park, and to nearby trails are also desired as a way to



SMITHVILLE PARK SITE ANALYSIS



Stewart Creek runs through Smithville Park

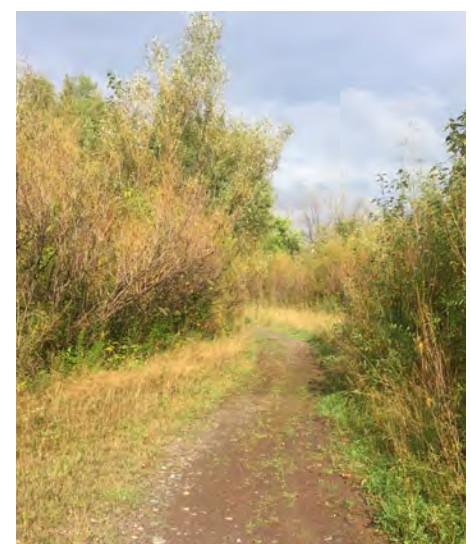


Invasive species in the park include Tansy and Spotted Knapweed

promote the parks. Wayfinding signage would likely be provided when the trail is developed through the park.

Stakeholder and community meeting attendees expressed an interest in picnic facilities and basic park amenities at Munger Landing, which is east of Smithville Park. In coordination with future park improvements, consideration should be given to existing and desired amenities at Munger Landing and Smithville Park together.

Area residents would like the quiet nature of Smithville Park to be maintained as it is today. Natural resources maintenance is desired. There is no desire to develop the park as an active recreational area.



The existing soft surface trail provides a nice walking path

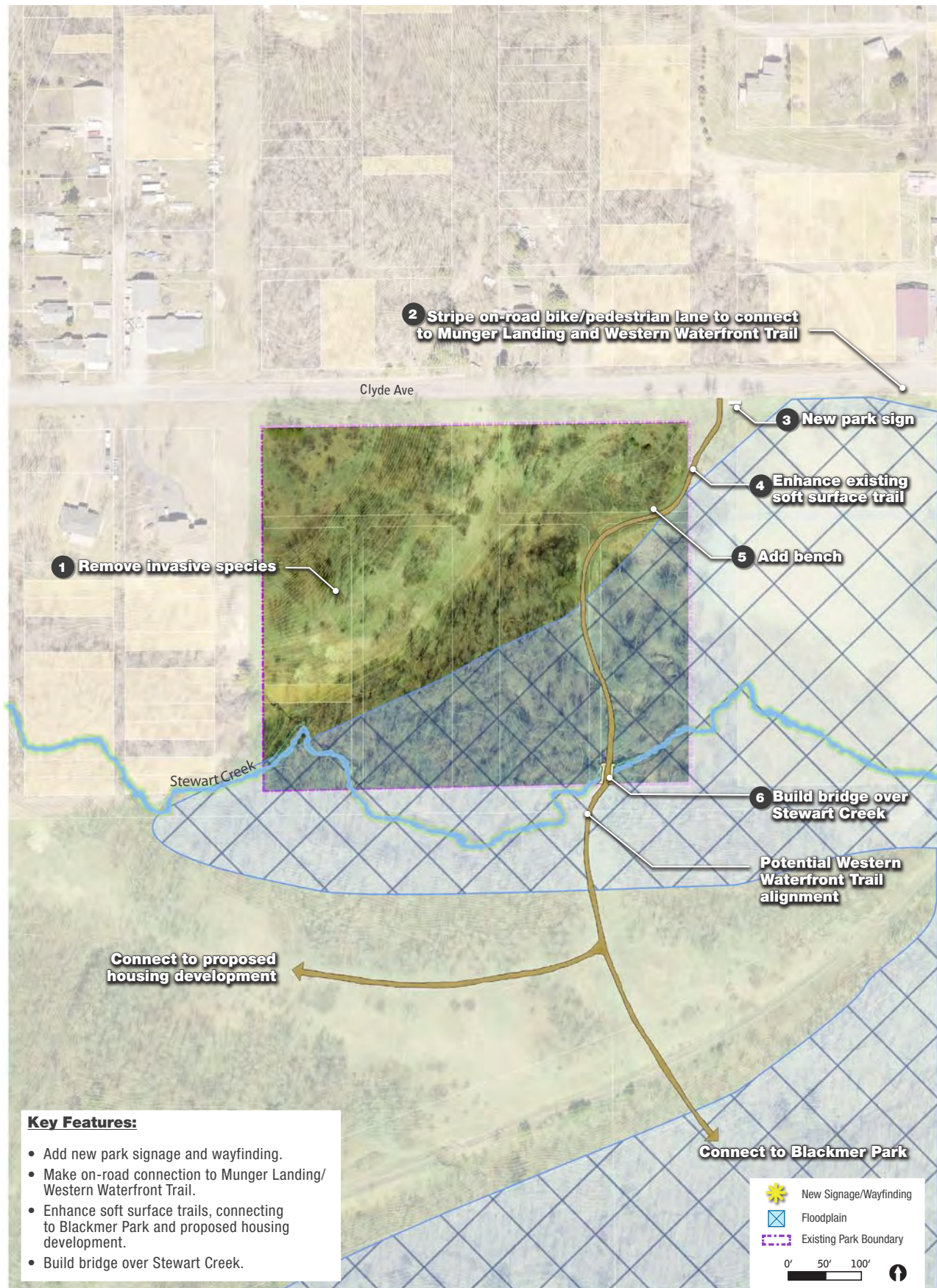


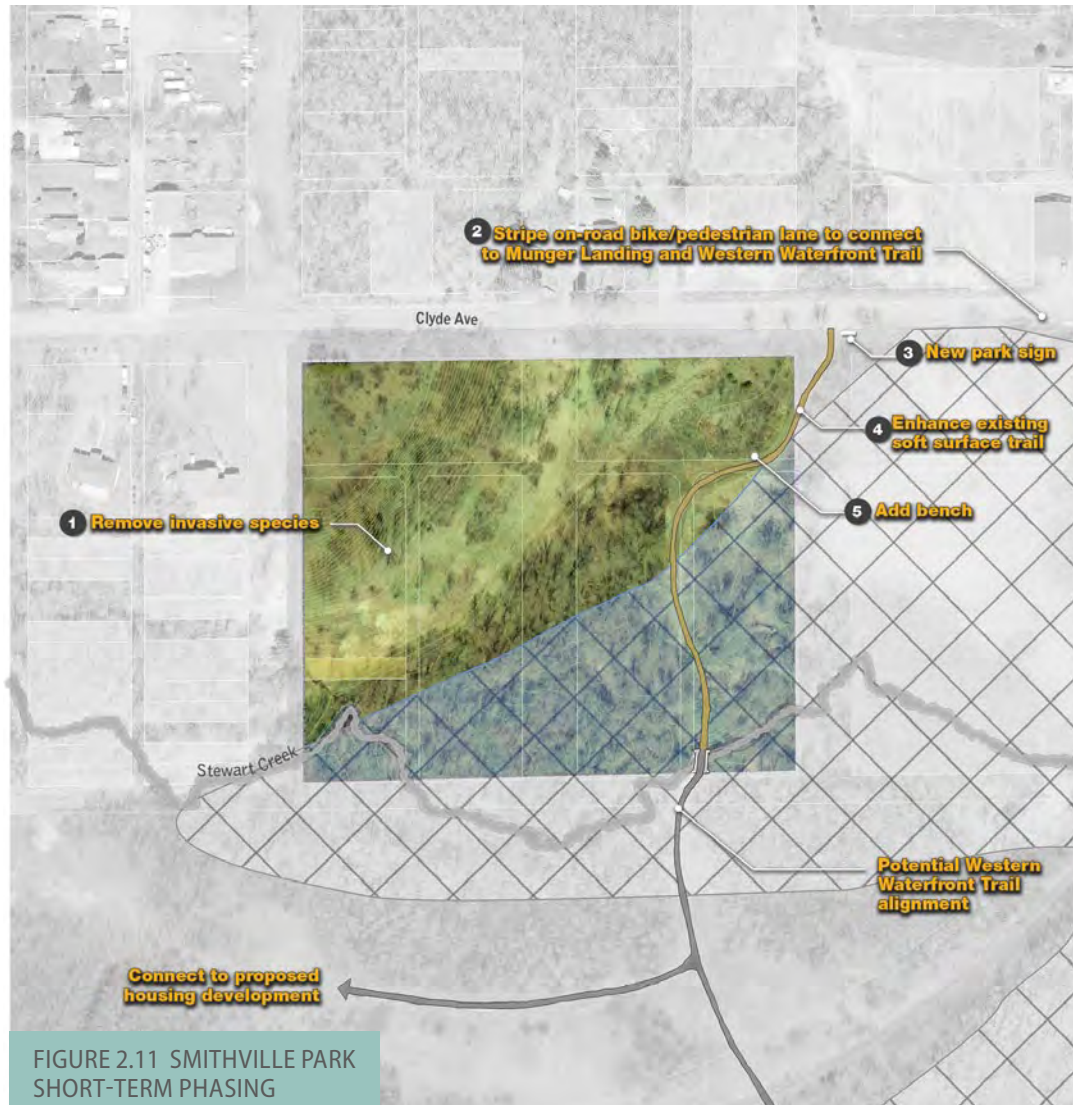
FIGURE 2.10 SMITHVILLE PARK
MINI-MASTER PLAN CONCEPT

Concept Plan & Recommendations

The concept plan for Smithville Park identifies the planned alignment for the Western Waterfront Trail along with necessary minor improvements, such as a bridge over Stewart Creek, signage, and a bench. Natural resource management of invasive species and wetland enhancement are potential improvements in the park.

Phasing & Cost Estimates

PHASE 1: SHORT-TERM



ACTION			COST
#	CATEGORY	DESCRIPTION	
1	Vegetation	Remove Invasive Species	\$21,000
2	Circulation	Stripe On-Street Bike Path	\$2,175
3	Circulation	Install New Park Sign	\$5,000
4	Circulation	Improve Existing Soft Surface Trail	\$2,600
5	Furnishings	Install New Bench	\$1,200
Total Short-Term Improvement Costs			\$31,975

PHASE 2: LONG-TERM



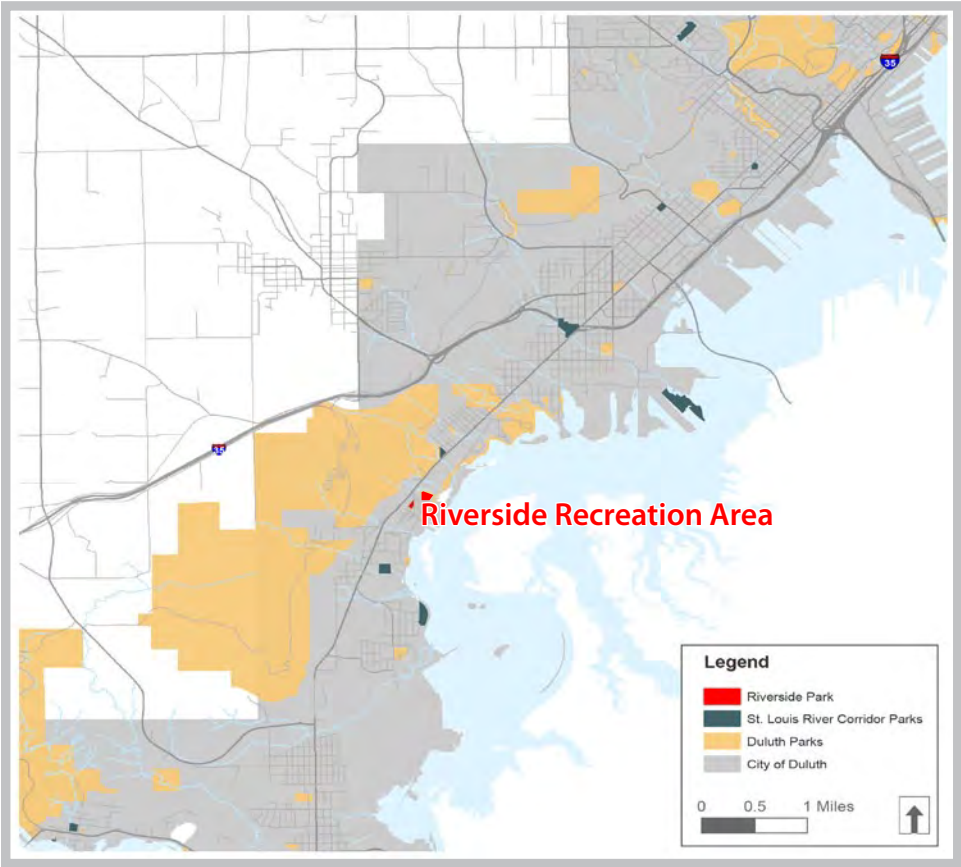
FIGURE 2.12 SMITHVILLE PARK
LONG-TERM PHASING

ACTION			COST
#	CATEGORY	DESCRIPTION	
6	Circulation	Build New 6' Bike/Pedestrian Bridge	\$30,000
Total Long-Term Improvement Costs			\$30,000
Total Short-Term Improvement Costs			\$31,975
Total Improvement Costs			\$61,975



Summary and Overview

Riverside Park and Riverside Community Recreation Area together make up the site for the Riverside Park Mini-Master Plan. The five-acre active park area is east of Riverside Drive, accessed by Manitou Street. The smaller one-acre community garden is located adjacent to and west of Riverside Drive. Both areas are located in the Riverside neighborhood in close proximity to Grand Avenue, and the Munger and Western Waterfront Trails. The Riverside Recreation Area is in need of updates and improvements to be more functional as a neighborhood park.



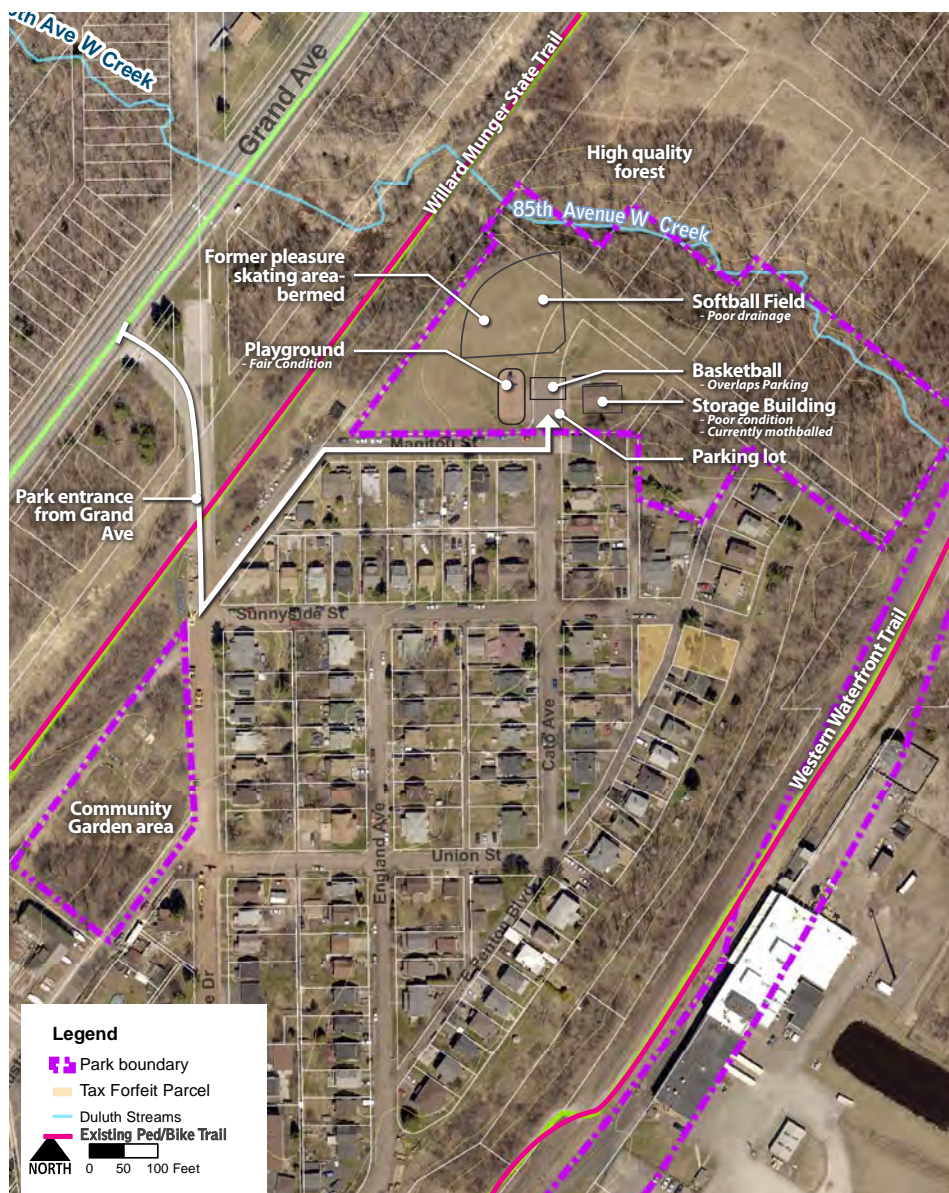
RIVERSIDE RECREATION AREA LOCATION MAP

STRENGTHS/ OPPORTUNITIES:

- » Park location is key for access to two major trails in west Duluth – the Munger State Trail and the Western Waterfront Trail – capitalize on location to trails
- » Natural setting is pleasant – 85th Ave W Creek, high quality forest on the northern and eastern sides of park
- » Open grassy space is nice for free play
- » The neighborhood is transitioning to younger families who would use a park often
- » The community garden site is well used and minor improvements to the fencing and water supply could be made

ISSUES:

- » Lack of seating and gathering space
- » Lack of shelter/shade, especially near playground
- » Lack of restrooms and drinking water
- » Building is an eye sore
- » Park is close to major trails, but trail connections to park do not exist
- » Playground is small and for young children only
- » Basketball hoop is in parking lot – not usable if cars are parked there
- » Softball field is bermed for old pleasure skate area – open space is not as usable as it could be if field was graded to be level and the backstop was removed



RIVERSIDE PARK SITE INVENTORY

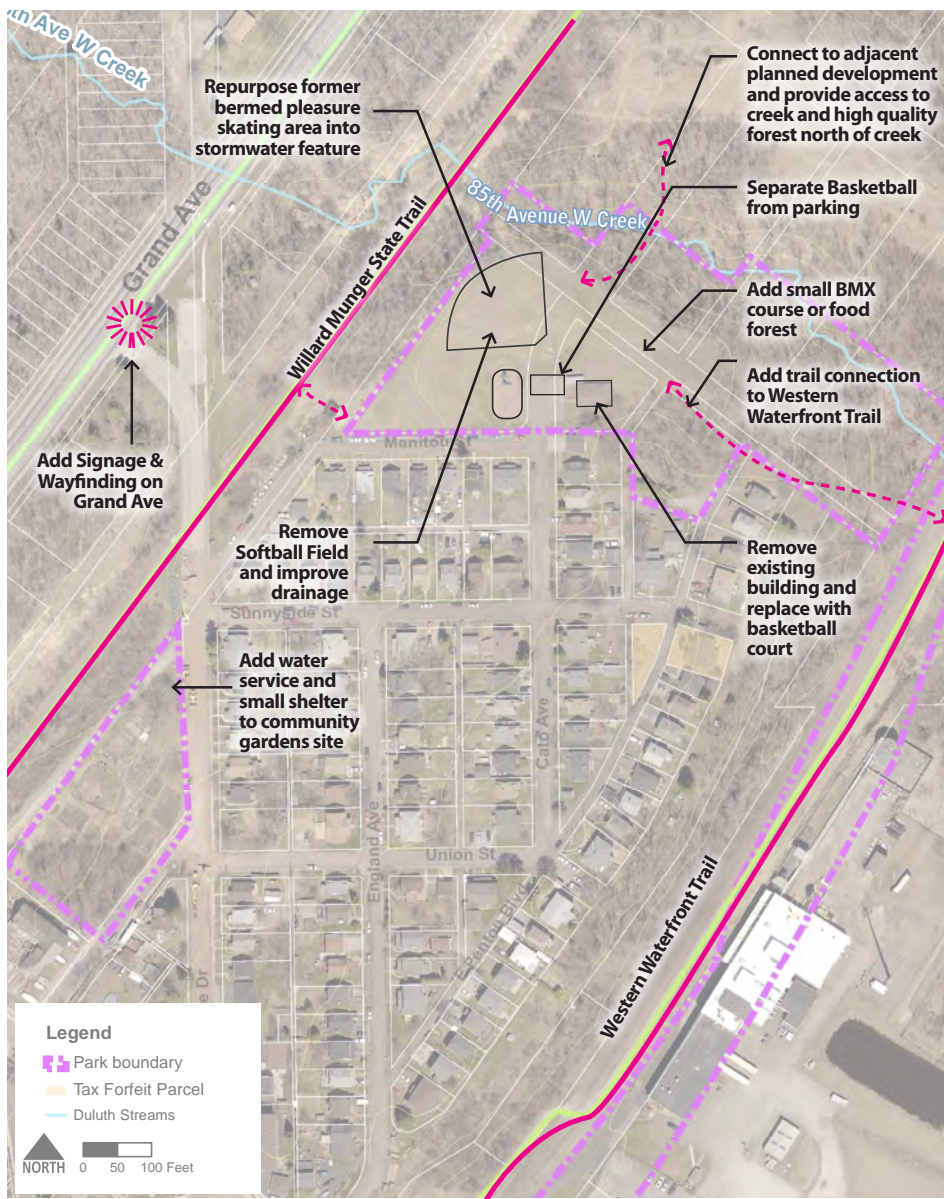
Existing Conditions

Riverside Park is bounded by the Munger State Trail corridor on the west, a residential street and homes on the south, the Western Waterfront Trail corridor on the east, and 85th Avenue W Creek on the north. A parking lot with a basketball hoop and a small playground are the two major features in Riverside Park. An old community center building in the park is today used only for storage. A softball backstop sits in the grassy open area of the park, but it is rarely used.

The community gardens are heavily used and maintained by the Duluth Community Garden Program.

Needs Assessment/Input Summary

At the stakeholder and community meetings, a desire was expressed for every park in the corridor to have basic amenities, including a bench, a picnic table, and a grill. These are items that are not located in Riverside Park today, but



RIVERSIDE PARK SITE ANALYSIS

are desired, especially in combination with a picnic shelter. Wayfinding and directional signage to each park, within each park, and to nearby trails are also desired as a way to promote the parks. There is a strong desire by the Riverside Community Club to include trailhead amenities and trail connections between the park and the Munger and Western Waterfront Trails. Wayfinding signage is needed along both trails to direct people to the park, and in the park to direct people to both trails.

Stakeholder and community meeting attendees expressed an interest in picnic facilities, such as a shelter, picnic tables, restrooms, and a drinking fountain. The community club members have expressed interest in promoting Riverside Park as a sustainable or “green” park with compostable toilets, solar lighting, and low maintenance furnishings. Community club members have also stated the desire for a healthy trail loop within the park that would include adult fitness stations. Overall maintenance and upkeep are desired in the park – residents would like to see the building removed, the softball backstop removed, and the basketball hoop moved to its own full basketball court.



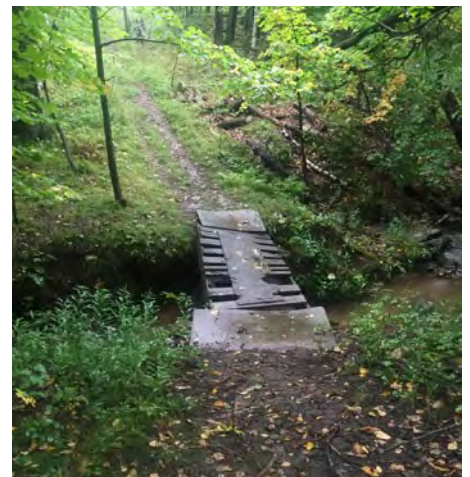
The existing ballfield



The existing building is no longer utilized



The existing playground is in fair condition



The existing crossing of 85th Avenue W Creek

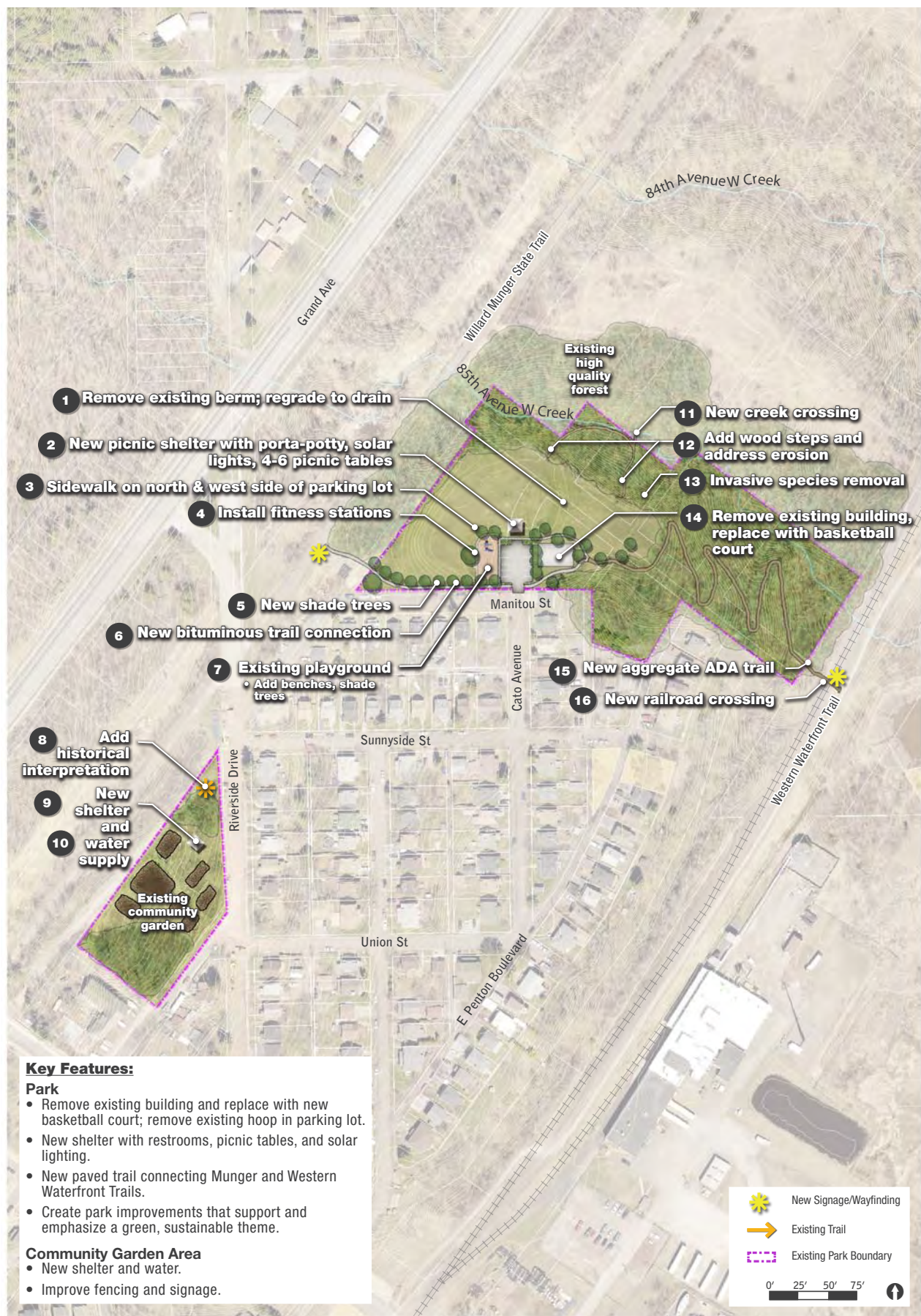


FIGURE 2.13 RIVERSIDE PARK
MINI-MASTER PLAN CONCEPT

The community garden site needs taller, stronger fencing and a better, more permanent water supply shelter. There is also the potential for historical interpretation signage at the community garden site along Riverside Drive. The Riverside Neighborhood has a rich history of boat building and river industry.

Concept Plan & Recommendations

The concept plan for Riverside Park includes basic park facilities, such as a picnic shelter, trail connections, a new basketball court, habitat enhancement in the wooded areas, and new trees in the recreation area of the park. The community garden area concept includes new water supply and signage.

Phasing & Cost Estimates

PHASE 1: SHORT-TERM



ACTION			COST
#	CATEGORY	DESCRIPTION	
1	Demolition	Remove Existing Berm and Seed	\$5,000
3	Circulation	Sidewalk on North & West Side of Parking Lot	\$7,800
4	Furnishings	Install Fitness Stations	\$5,000
5	Vegetation	New Shade Trees (27)	\$10,800
7	Furnishings	Install New Benches (2)	\$2,400
8	Circulation	Install New Historical Interpretation/Signage	\$2,500
11	Circulation	New Creek Crossing - 4' Pedestrian Bridge	\$2,400
12	Infrastructure	Build New Wood Steps	\$600
13	Vegetation	Remove Invasive species (buckthorn)	\$7,500
14	Demolition	Remove Existing Building	\$15,000
18	Furnishings	Install porta-potty with screen	\$2,500
Total Short-Term Improvement Costs			\$61,500

PHASE 2: LONG-TERM



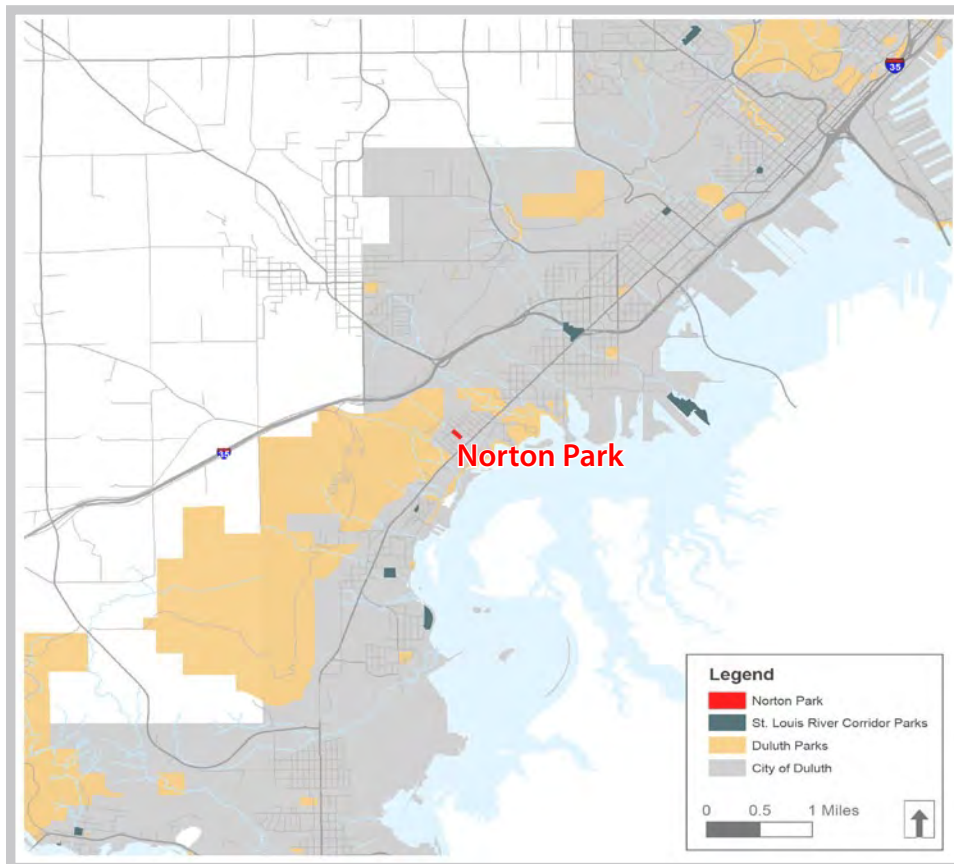
FIGURE 2.15 RIVERSIDE PARK
LONG-TERM PHASING

ACTION			COST
#	CATEGORY	DESCRIPTION	
2	Buildings	Build new Picnic Shelter with Enclosed Porta-potty	\$75,000
2	Furnishings	Install New Picnic Tables (5)	\$10,000
6	Circulation	New Bituminous Trail Connection	\$40,000
7	Recreation	Build New Playground	\$150,000
9	Buildings	Build New Shelter at Community Garden	\$60,000
10	Infrastructure	New Water Line for Community Garden	\$40,000
14	Recreation	Build New Basketball Court - Full	\$50,000
15	Circulation	New Aggregate ADA Trail	\$11,000
16	Circulation	Create Pedestrian RR Crossing	TBD
17	Circulation	New Park Wayfinding Signage	\$2,000
Total Long-Term Improvement Costs			\$438,000
Total Short-Term Improvement Costs			\$ 61,500
Total Improvement Costs			\$499,500



Summary and Overview

Norton Park is a three acre neighborhood park in the Norton Park Neighborhood northwest of Grand Avenue. The park is a valuable asset that is centrally located in the generally isolated neighborhood, which is surrounded by Grand Avenue, the Lake Superior Zoo, Spirit Mountain and forested land. The park is characterized by significant topography which forms three separate levels or areas of the park, including a playground, basketball court, park building, softball field, and a wooded creek corridor.



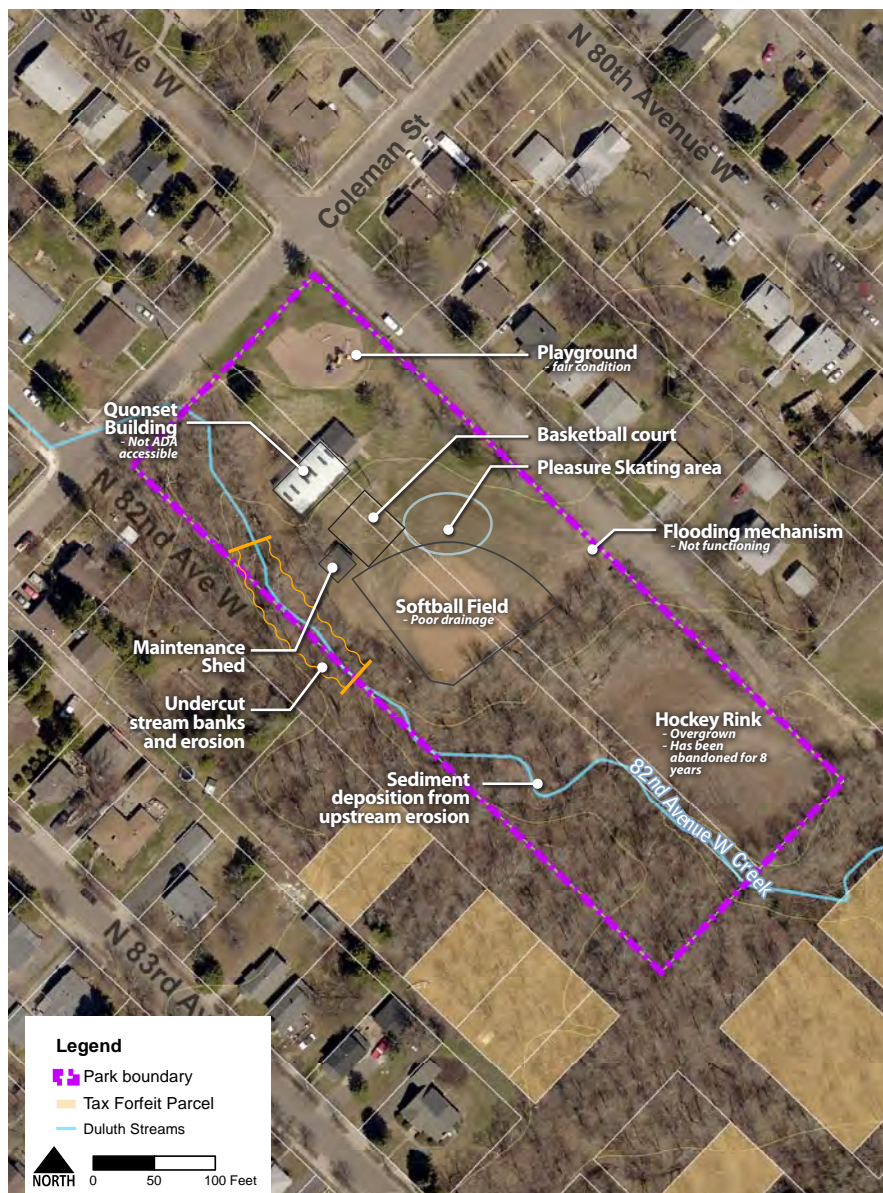
NORTON PARK LOCATION MAP

STRENGTHS/ OPPORTUNITIES:

- » Park is well used and loved by neighborhood residents
- » The 82nd Ave Creek and topography provide the park with a unique, natural setting
- » Park location is ideal for potential trail connections to Munger State Trail, Cross City Trail, and Zoo
- » Potential for new use at abandoned hockey rink site – restored wetland, open space

ISSUES:

- » 82nd Ave Creek has severe erosion and undercutting of stream banks
- » Overgrown hockey rink is unusable space
- » The Quonset Hut is not ADA accessible
- » Flooding mechanism for the pleasure rink on the softball field frequently malfunctions
- » The softball field has poor drainage



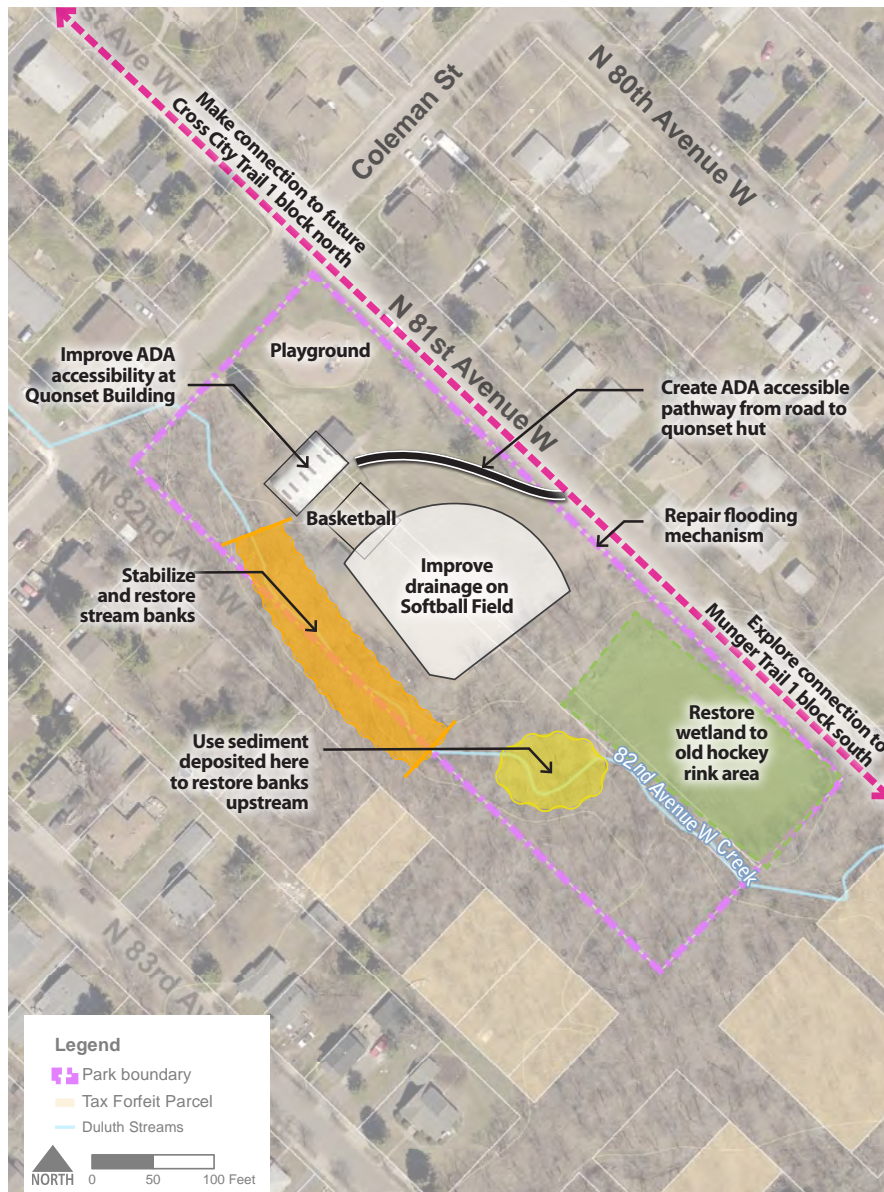
NORTON PARK SITE INVENTORY

Existing Conditions

The edges of Norton Park are Coleman Street, N 181st Ave W, the 82nd Avenue W Creek, and residential back yards. The creek passes through the southwestern and southeastern edges of the park. The three levels of Norton Park form three distinct recreational areas within the park. The upper level is adjacent to Coleman Street and N 181st Ave W and contains a playground and the closest access to neighborhood residents. The middle level contains the Quonset Hut park building, a maintenance shed, a basketball court and a softball field. The softball field backs up to the wooded creek corridor and faces homes across N 181st Ave W. On the lower level of the park, the remnants of an overgrown and abandoned hockey rink exist.

Needs Assessment/Input Summary

At the stakeholder and community meetings, a desire was expressed for every park in the corridor to have basic amenities, including a bench, a picnic table, and



NORTON PARK SITE ANALYSIS

a grill. One or two picnic tables do exist in Norton Park, but upgraded furnishings and a formalized picnic area is desired. Wayfinding and directional signage to each park, within each park, and to nearby trails are also desired as a way to promote the parks. Signage to direct park users to the Munger Trail and the future Cross City Trail is desired.

The Norton Park Community Club is currently active in the park by providing programming and access to the building. Updated playground equipment is desired as well as better picnic tables and benches near the playground. There is a strong desire to update the building with an ADA accessible trail from 181st Ave W. The sidewalk along 181st Ave W is also in need of repair and extension for proper ADA access to and in the park. Overall upkeep and maintenance is desired throughout the park.

Natural resources improvements that are needed include stream bank restoration to repair erosion and undercutting along the creek; steep slope and drainage swale vegetation on the north side of the park; tree thinning on the



The existing playground is in fair condition



A quonset hut serves as the neighborhood community center



Erosion issues along 82nd Ave W Creek in the park



The existing ballfield has poor drainage



FIGURE 2.16 NORTON PARK
MINI-MASTER PLAN CONCEPT

lower slope to improve views in the park and remove invasive species; and improving the abandoned hockey rink surface by removing the remaining bituminous material and invasive herbaceous species.

Concept Plan & Recommendations

The concept plan for Norton Park prioritizes accessibility issues to the building, general maintenance and upgrades, and natural resources improvements to the creek, steep slopes, and lower area of the park.

Phasing & Cost Estimates

PHASE 1: SHORT-TERM



ACTION			COST
#	CATEGORY	DESCRIPTION	
1	Circulation	New Park Signage	\$5,000
2	Stormwater	Create infiltration Basin, and Divert Street Runoff into Basin	\$18,000
3	Stormwater	Add Swale Feature to Improve Drainage	\$5,250
7	Furnishings	Upgrade Picnic Tables (2)	\$4,000
9	Circulation	Extend Sidewalk	\$8,400
10	Circulation	Create ADA Walkway to Building	\$9,600
Total Short-Term Improvement Costs			\$50,250

PHASE 2: LONG-TERM



FIGURE 2.18 NORTON PARK
LONG-TERM PHASING

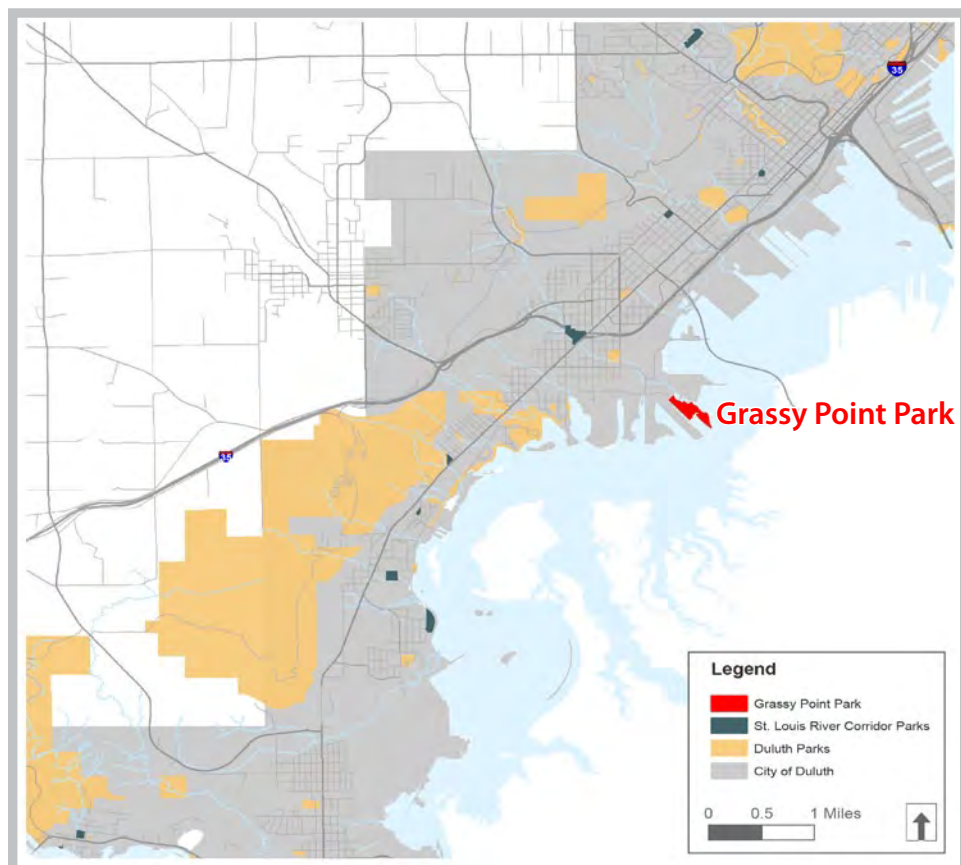
ACTION				COST
#	CATEGORY	DESCRIPTION		
4	Natural Resources	Stream Restoration Work at Norton		\$55,000
5	Circulation	Repair Existing Steps		\$10,000
6	Circulation	Replace and Extend Existing Sidewalk - 6' concrete trail		\$12,450
8	Vegetation	Convert Turf on Steep Slope to Native Plantings		\$50,400
11	Recreation	Improve Drainage		\$50,000
12	Vegetation	Remove Invasive Species and Thin Woodland		\$800
13	Vegetation	Create Informal Lawn Area		\$22,000
14	Circulation	New Park Signage		\$1,000
14	Lighting	New Street Lighting		\$6,000
15	Recreation	Upgrade play equipment		\$75,000
Total Long-Term Improvement Costs				\$282,650
Total Short-Term Improvement Costs				\$ 50,250
Total Improvement Costs				\$332,900



GRASSY POINT PARK

Summary and Overview

Grassy Point Park is a 26 acre linear park and boardwalk trail that is located in the Irving Park Neighborhood. It is isolated from residential areas as it is surrounded by the industrial, port area of the St. Louis River estuary. It also lacks connectivity to other trails, which makes it a destination trail to be accessed typically by car. The park and trail itself has river access, wildlife viewing opportunities, and a fishing dock. Recent sinking of the boardwalk has made the trail inaccessible.



GRASSY POINT PARK LOCATION MAP

STRENGTHS/ OPPORTUNITIES:

- » Good birding location
- » Good fishing at the dock
- » The MNDNR is managing and planning for habitat and vegetation restoration, in coordination with the MPCA, the EPA Area of Concern, and the Great Lakes Restoration Initiative – the document “Conceptual Design Plan: Grassy Point Project” identifies restoration areas and initiatives
- » Park entrance has benches and signage, but the opportunity exists to make it more of a gathering space with better informational signage

ISSUES:

- » Park is difficult to find in the industrial neighborhood
- » Parking is limited
- » Informal canoe/kayak launch is difficult to find and far from the parking area
- » Boardwalk is under water in areas and inaccessible
- » The isolated location of the park makes it attractive to vandalism and unintended users
- » Invasive species exist throughout the park
- » Better signage is required to describe the features and access points of the park and trails



GRASSY POINT PARK SITE INVENTORY

Existing Conditions

Grassy Point Park is located at the end of a dead end road surrounded by river industry. Most of the park is marsh land at the mouth of the Keene Creek to the St. Louis River. The site was part of the sawmilling industry in the nineteenth and twentieth centuries and contains many areas of piled up wood waste materials. Invasive vegetation exists throughout the park, but there are beautiful views of the river and wildlife. The existing boardwalk trail is about ¼ mile long and in current disrepair. An informal canoe/kayak launch exists southeast of the park entrance area. Much of the park area is inaccessible.

The Wheels On Trails organization completed a report in 2008, in which it evaluated several trails in Duluth, including Grassy Point Trail, for ADA accessibility. The report identified the entire boardwalk as accessible with areas of dangerous drop-offs, where the boardwalk does not have the appropriate edges for wheelchairs. The organization has advocated for improvements, such



GRASSY POINT PARK SITE ANALYSIS



Existing wayfinding



Most segments of the existing boardwalk have edges to improve wheelchair safety along the trail



The existing overlook provides great views of the river



The floating boardwalk is becoming unstable, sinking with applied weight

as an accessible boardwalk, at Grassy Point Park, which were installed. Since that time, the boardwalk has sunk in areas making it inaccessible to all trail users.

Needs Assessment/Input Summary

At the stakeholder and community meetings, a desire was expressed for every park in the corridor to have basic amenities, including a bench, a picnic table, and a grill. Benches exist at the entrance to the park, but should be added along the boardwalk trail at appropriate viewing stops. A picnic area does not exist at Grassy Point Park today, but may be needed in coordination with canoe/kayak launch improvements. Wayfinding and directional signage to each park, within each park, and to nearby trails are also desired as a way to promote the parks. Wayfinding and directional signage is a need in and around Grassy Point, as it is difficult to find in the neighborhood. Information signage is also needed to describe the park amenities at the entrance to the park.



FIGURE 2.19 GRASSY POINT PARK
MINI-MASTER PLAN CONCEPT

Other desires from the community include adding bird blinds, fishing docks, and a more formalized canoe/kayak launch. The trails should be repaired to be usable and functional in all four seasons, with the potential addition of snowshoe trails, cross country ski trails, or ice skating trails.

Concept Plan & Recommendations

The concept plan for Grassy Point Park prioritizes and identifies the natural resource and habitat restoration improvements that are currently being planned by the MN DNR and MPCA. Other improvements include trail repair and accessibility, and canoe/kayak launch improvements. Close coordination with the DNR will ensure proper installation of improvements.

Phasing & Cost Estimates

PHASE 1: SHORT-TERM



ACTION			COST
#	CATEGORY	DESCRIPTION	
1	Circulation	Install New Park Sign	\$5,000
1	Circulation	Install New Park Wayfinding Signs (2)	\$2,000
1	Furnishings	Install New Picnic Table	\$2,000
2	Circulation	Improve Trail Access to Canoe/Kayak Launch	\$6,000
3	Circulation	Address ADA Concerns on Boardwalk	\$5,000
4	Vegetation	Remove buckthorn	\$6,000
5	Recreation	Improve Canoe/Kayak Access	\$5,000
6	Circulation	New Water Trail Signage	\$1,000
7	Circulation	Repair Boardwalk	\$1,500
8	Recreation	New Overlook Structure/Bird Blind	\$12,500
Total Short-Term Improvement Costs			\$46,000
Total Improvement Costs			\$46,000

PHASE 2: LONG-TERM



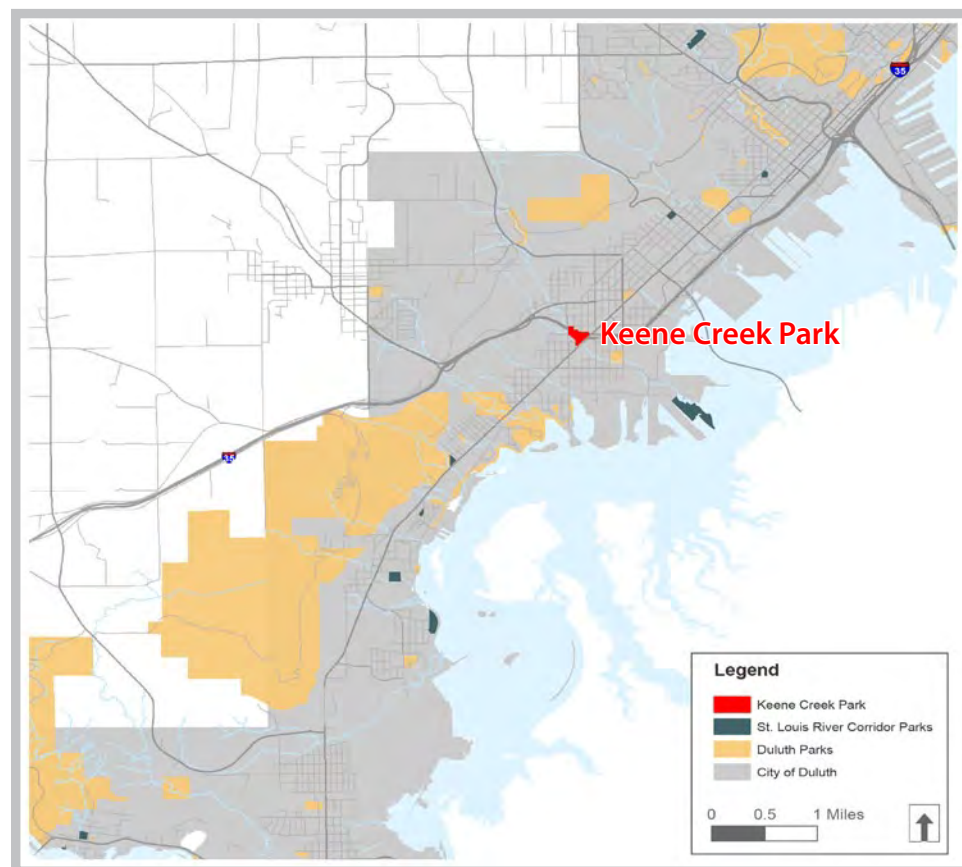
Long-term improvements at Grassy Point Park to be made in collaboration with the Minnesota Department of Natural Resources.



KEENE CREEK PARK

Summary and Overview

Keene Creek Park is a 13 acre urban park in the Fairmount Neighborhood. It is in a unique location under Interstate 35 bridge decks and adjacent to Grand Avenue, surrounded on all other sides by local streets and single-family homes. Two branches of Keene Creek run through the park and join together at the southeastern edge of the park to travel through a culvert under Grand Avenue. Keene Creek Park contains many recreational features, including a dog park, basketball court, tennis courts, playground, skate park, and several paved trails.



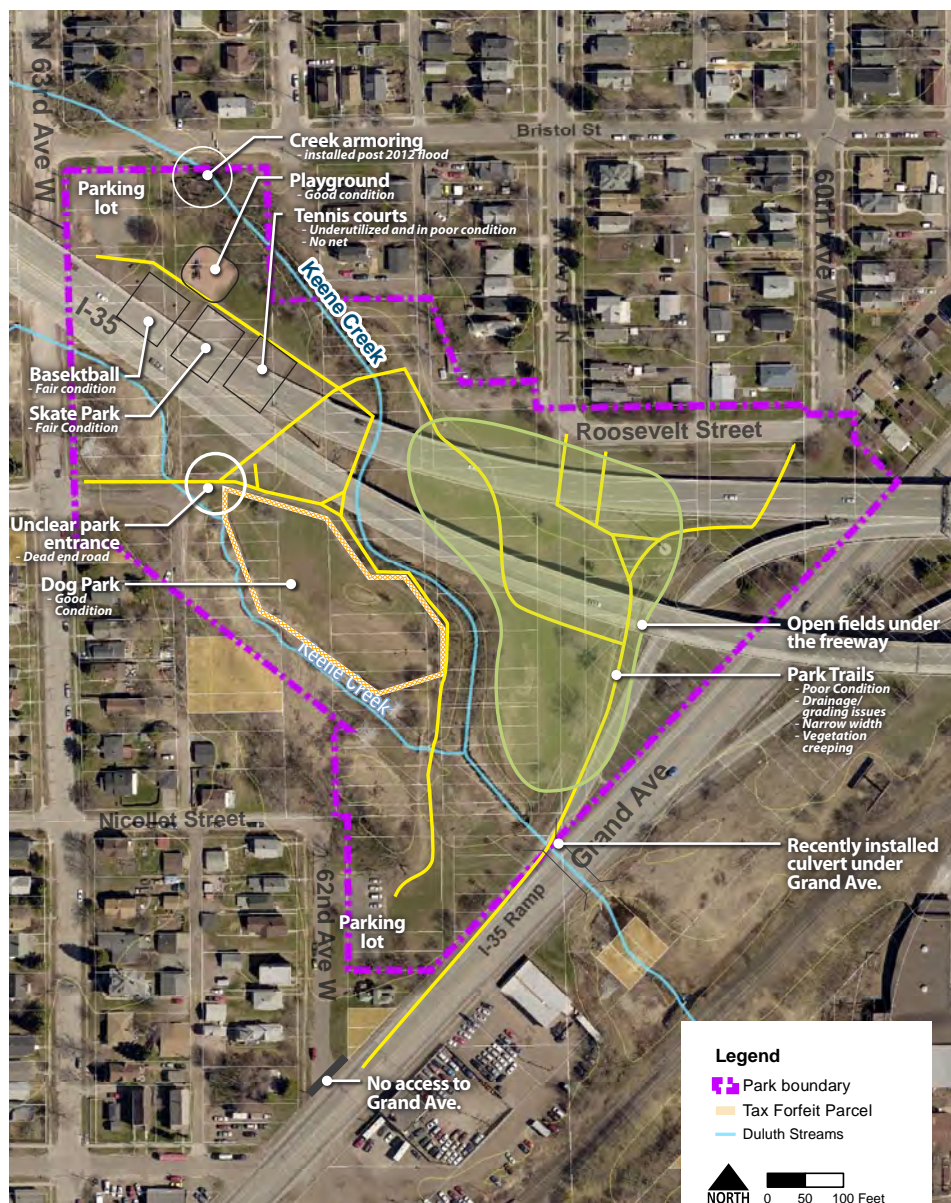
KEENE CREEK PARK LOCATION MAP

STRENGTHS/OPPORTUNITIES:

- » Popular dog park could benefit from minor improvements and possible expansion
- » Skate park is popular, and could be expanded
- » Playground is popular and edging was recently updated, equipment could be expanded
- » The Cross City Trail may pass through the park, providing opportunity for a trailhead at the northwestern parking lot
- » The I-35 bridge provides a unique environment and opportunity for art interpretation
- » Keene Creek is a nice natural feature in the park, there is the opportunity to improve vegetation by removing invasives along the streambanks

ISSUES:

- » Basketball court surface is uneven
- » Tennis courts are underutilized and in disrepair
- » Paved trails are in poor condition, sagging and eroding from stormwater issues
- » Lack of access from Grand Avenue
- » Lack of drinking water and restrooms
- » 2012 flood damage is still visible in the park – more cleanup is needed
- » Lack of shelter/pavilion for picnic tables and gathering
- » Lack of lighting for night time safety
- » Lack of ADA accessibility throughout the park
- » Garbage and park furnishings are sometimes found in the creek
- » Weedy/unkempt areas of the park are unsightly



KEENE CREEK SITE INVENTORY

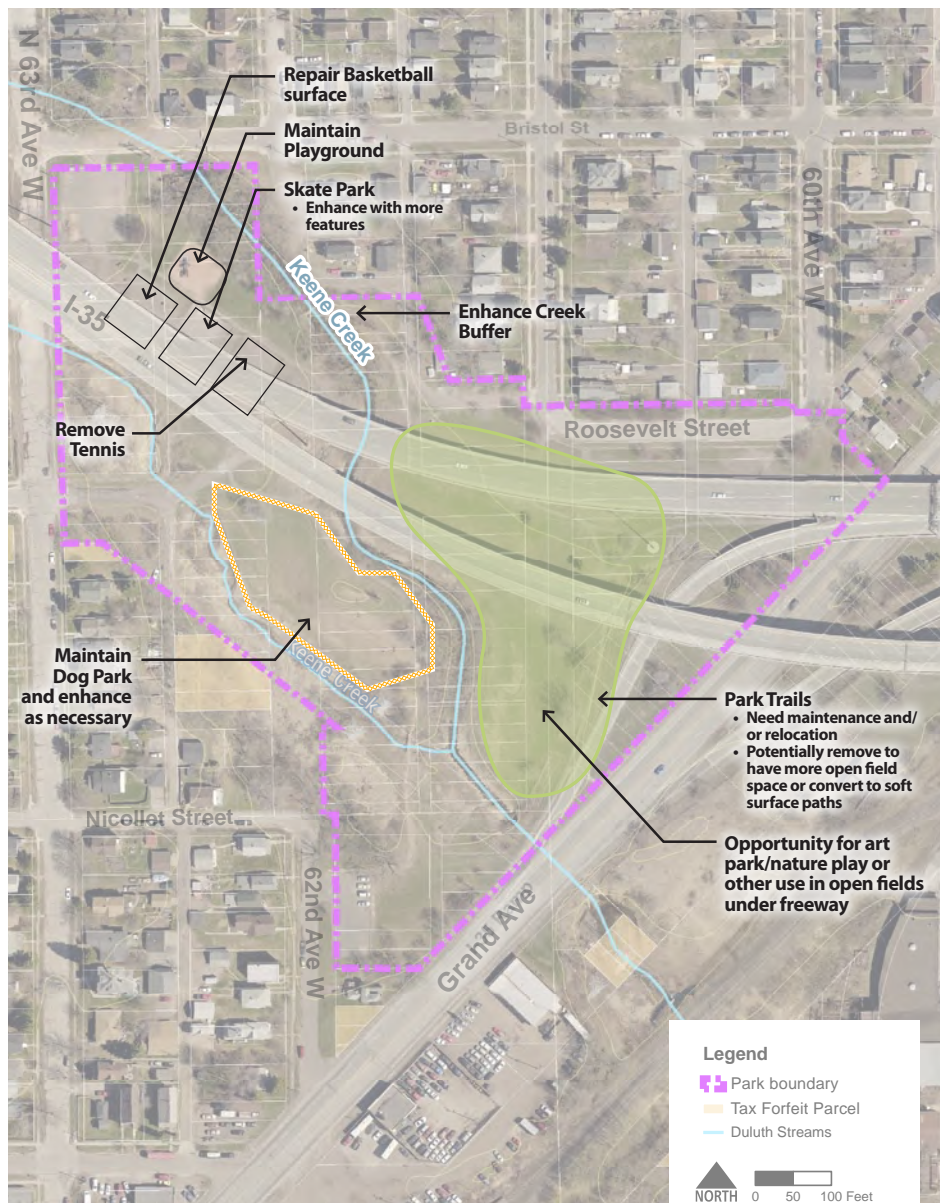
Existing Conditions

Keene Creek Park is a popular, multi-use park. Several recreational features are located in the northwestern corner of the park, which include an updated playground popular with neighborhood residents, a well-used basketball court, two tennis courts in poor condition, and a skate park.

Keene Creek is a designated trout stream and its wooded banks line the northern edge and run through the center of the park.

I-35 bridge decks and pillars run through the center of the park from west to east, which provide shade, but also make portions of the park feel dark and cold at times.

Parking lots exist in the northwestern and southern corners of the park. Vehicle access to the park is not provided from Grand Ave., but from local streets in the neighborhood.



KEENE CREEK PARK SITE ANALYSIS

Needs Assessment/Input Summary

Keene Creek Park contains basic amenities, including benches, picnic tables, and grills, but a desire for a picnic shelter or pavilion was expressed. Wayfinding and directional signage to each park, within each park, and to nearby trails are also desired as a way to promote the parks. Keene Creek has many trails that could benefit from wayfinding signage. With the potential addition of the Cross City Trail, a kiosk sign and directional signage to area businesses and community locations should be added in the park.

An overall interest in basic upkeep, flood cleanup, and the addition of basic park amenities, such as drinking water and restrooms, was expressed at stakeholder and community meetings. There is a desire for improved maintenance of the grassy areas—weed removal, increased mowing, and better stormwater management to reduce standing water in the park and on the trails. The deteriorating bituminous trails are in need of repaving, grading, and potential realignment in order to avoid further degradation from stormwater drainage issues. There is a need throughout the park for improved safety features—lighting, sight lines, and better circulation.

Dog park improvements are desired, including new drinking water for dogs, lighting, a rear entrance, and better parking/wayfinding signage to the entrance of the dog park.



The existing surface of the basketball court is in poor condition



Recent improvements to the Keene Creek Dog Park include signage and a bag dispenser



Many existing trail surfaces are in poor condition



Keene Creek is a major feature of the park

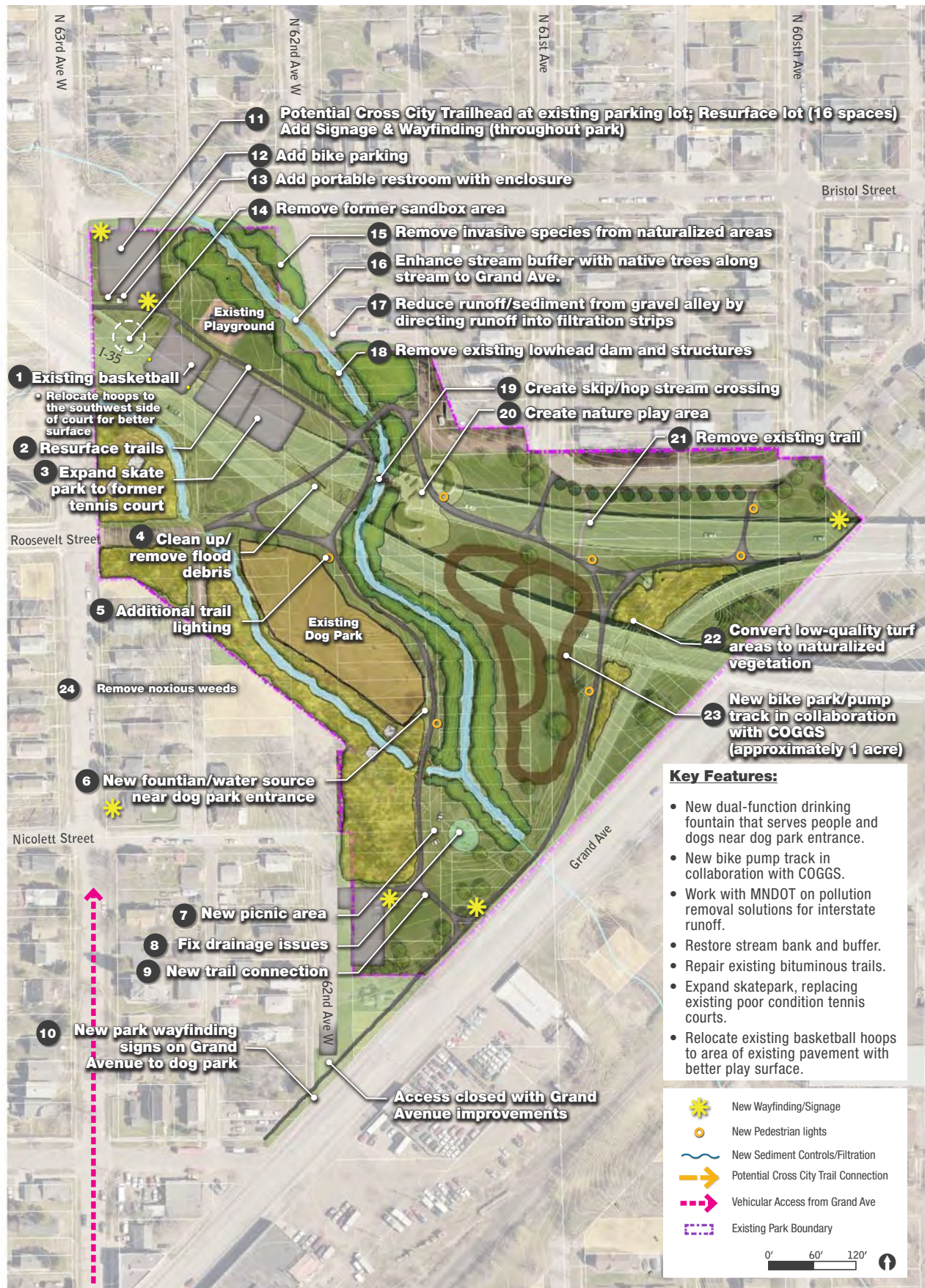


FIGURE 2.22 KEENE CREEK PARK
MINI-MASTER PLAN CONCEPT

Concept Plan & Recommendations

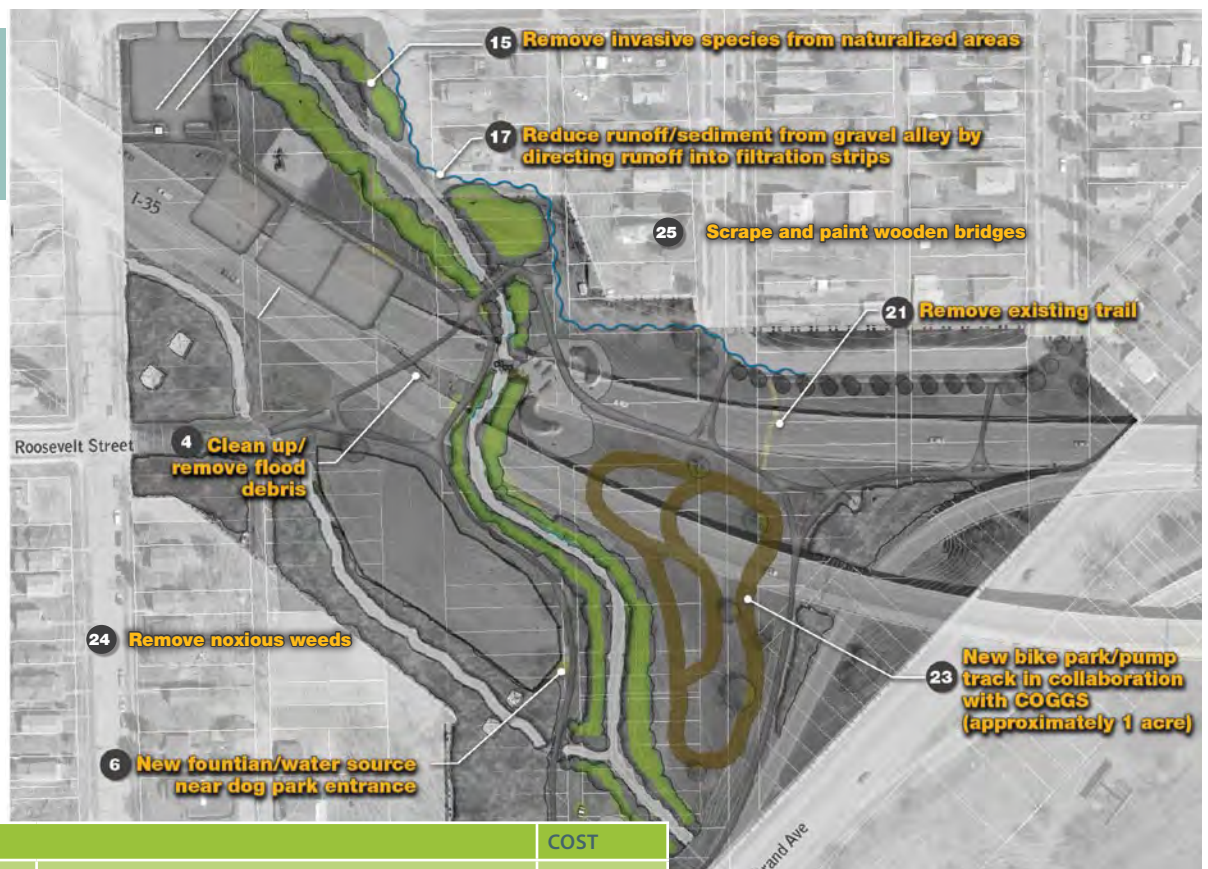
The concept plan for Keene Creek Park identifies several deferred maintenance items that need to be completed to make the park function better: improved stormwater management and drainage, creek vegetation management and cleanup, trail grading and repaving, and signage and circulation improvements. Priorities include the addition of restrooms, drinking water, basic park furnishings and amenities (trash cans, lighting, and shade), and an enhanced picnic area.

Coordination and partnership with the DNR to make natural resource improvements along Keene Creek will be important to the future functionality of Keene Creek and the surrounding vegetation. Items 15-19 are key partnership improvements:

- » Increase streamside shading just above the Highway 23 culvert. This is a very open area which is likely increasing water temperatures. Adding trees to the stream riparian corridor would be very desirable for trout survival in this area as well as downstream.
- » The full tree canopy should be left over the creek to keep stream temperatures cool enough for trout. Despite the fact that there is not a lot of undergrowth at this site, there is also no evidence of any significant erosion, as the tree root densities seem to be very high through this reach, and are doing a good job of protecting the banks.
- » Remove the existing lowhead dam and structures. This project would require some significant design and channel work downstream and should be coordinated closely with the DNR. The skip-hop stream crossing might be achievable within the dam removal design.

Phasing & Estimates PHASE 1: SHORT-TERM

FIGURE 2.23 KEENE CREEK PARK SHORT-TERM PHASING



ACTION			COST
#	CATEGORY	DESCRIPTION	
4	Demolition	Clean Up/Remove Flood Debris	\$1,500
6	Furnishings	New Fountain Near Dog Park Entrance	\$6,000
6	Infrastructure	New Water Line for Source Near Dog Park	\$40,000
15+24	Vegetation	Remove invasive species & noxious weeds	\$7,000
17	Stormwater	Reduce Runoff/Sediment From Alley	TBD
21	Demolition	Remove Existing 6' Bituminous Trail	\$900
25	Furnishings	Scrape and paint wooden bridges	\$ 2,500
Total Costs of Short-Term Improvements			\$57,900

PHASE 2: LONG-TERM



FIGURE 2.24 KEENE CREEK PARK LONG-TERM PHASING

ACTION			COST
#	CATEGORY	DESCRIPTION	
1	Recreation	Relocate Hoops	\$5,000
2	Circulation	Resurface Existing 6' Bituminous Trail	\$85,000
3	Recreation	Expand Skate Park	\$45,000
5	Lighting	Additional Trail Lighting	\$28,000
7	Furnishings	New Picnic Area - Picnic Tables (2)	\$4,000
7	Furnishings	New Picnic Area - Grill	\$1,000
8	Stormwater	Fix Drainage Issues - New Raingarden	\$30,000
9	Circulation	New Trail Connection - 6' Bituminous Trail	\$4,400
10	Circulation	Install New Park Wayfinding Sign	\$2,000
11	Circulation	Install New Park Sign & Kiosk at Trailhead	\$12,500
11	Circulation	Resurface Existing Parking Lot	\$24,000
12	Furnishings	Add Bike Parking	\$3,000

ACTION			COST
#	CATEGORY	DESCRIPTION	
13	Buildings	Build New Port-a-Potty Enclosure	\$2,000
14	Demolition	Remove Former Sandbox Area	\$5,000
16	Vegetation	Enhance Stream Buffer	\$15,000
18	Natural Resources	Remove Existing Lowhead Dam	TBD
19	Circulation	Create Skip Hop Stream Crossing	\$1,500
20	Recreation	Create Natural Play Area	\$50,000
22	Vegetation	Convert Low-Quality Turf Areas to Naturalized Vegetation	\$2,750

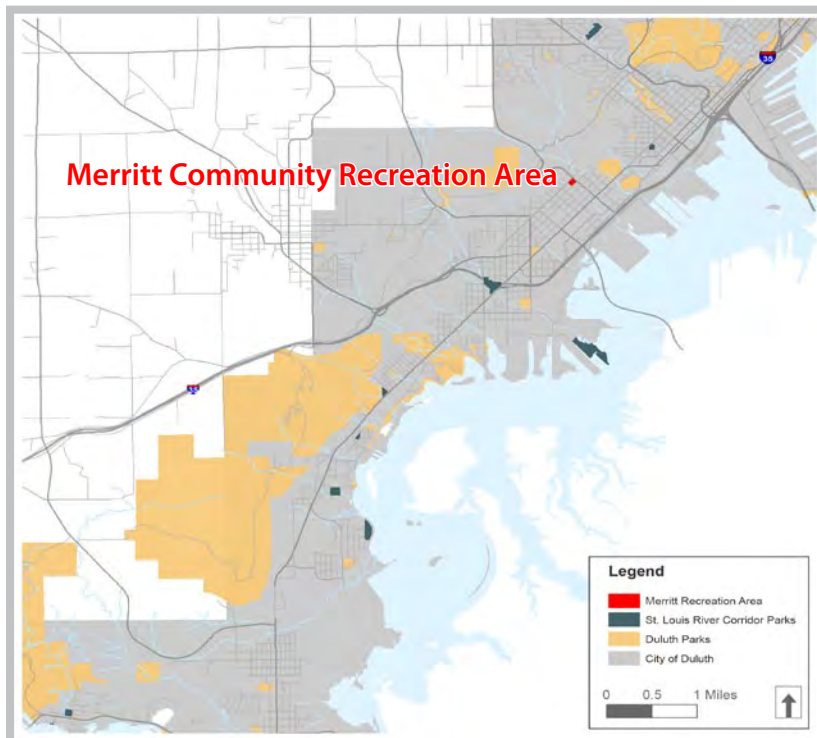
Total Costs of Long-Term	\$320,150
Total Costs of Short-Term	\$57,900
Total Costs of All Improvements	\$378,050



MERRITT COMMUNITY RECREATION AREA

Summary and Overview

Merritt Community Recreation Area is a three acre, one-block park in the Lincoln Park Neighborhood. It is bounded on all sides by local, residential streets: W 8th St., N 40th Ave. W, W 7th St., and N 41st Ave W. The park is generally a recreational park with a softball field, ice rink, basketball court, park building, and playground. The park sits on a sloped field, which creates some drainage issues around the building, softball field, and play area. The softball field and ice rink are used for an adult softball league and broomball league, respectively. The building is underutilized and planned for removal by the City. Several apple trees were recently planted in the north corner of the park.



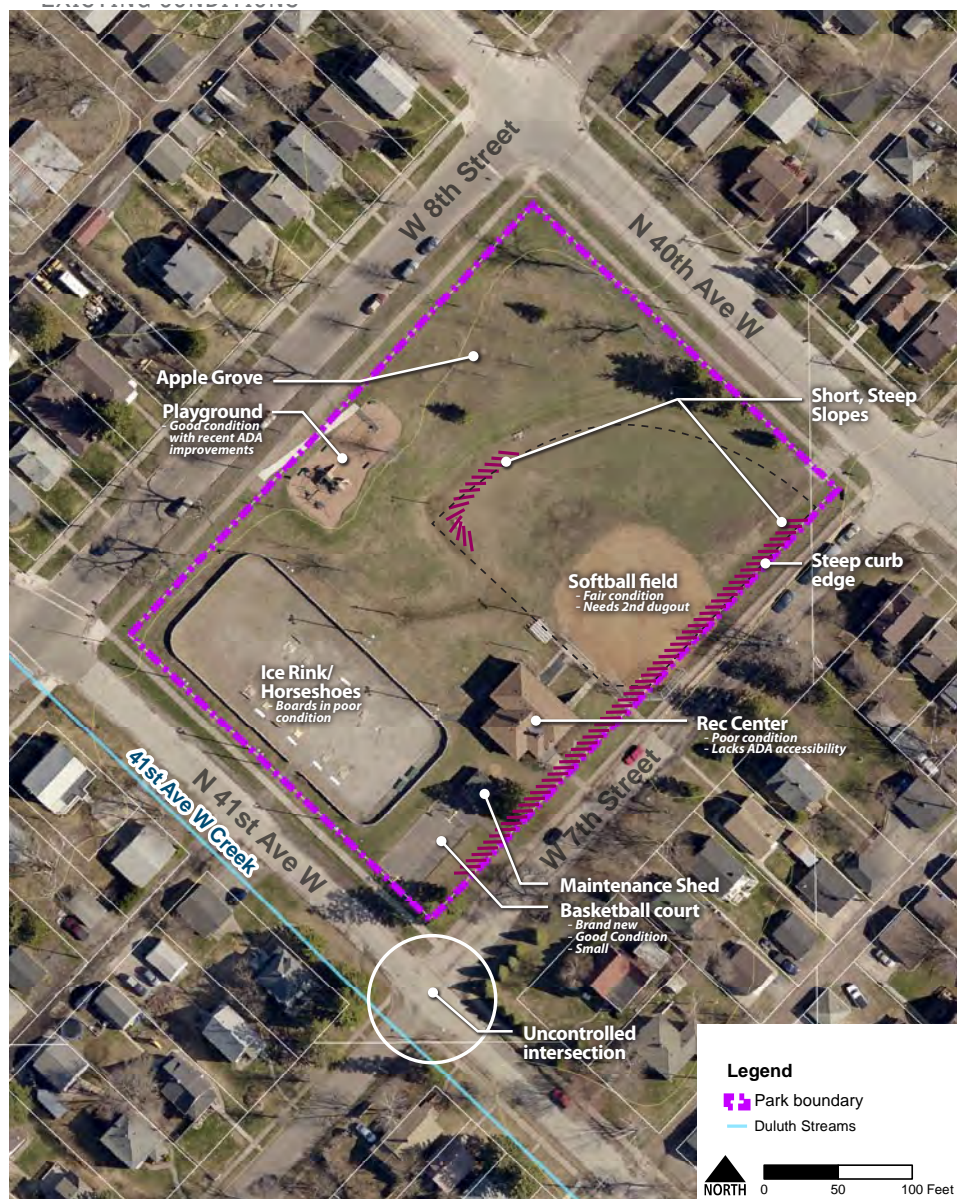
MERRITT COMMUNITY RECREATION AREA LOCATION MAP

STRENGTHS/ OPPORTUNITIES:

- » Brand new basketball court is in good condition, opportunity to add fencing along south corner of park to prevent balls from going into the street where there is an uncontrolled intersection
- » The park is in a good location for the neighborhood with good access on all sides to residents, opportunity to improve street crossings and sidewalks
- » The softball field and hockey rink are well used features for summer and winter recreation, but both could use minor improvements
- » Opportunity to improve stormwater management with rain gardens or native vegetation areas

ISSUES:

- » Park building is in poor condition, lacks ADA accessibility, and is rarely open to the public/park users
- » The ice rink lights are controlled on a timer in the building and not reliable to be on when needed
- » Hockey boards are in poor condition – no money to replace
- » Stormwater drainage issues exist throughout the park—on the playground and softball field there are several areas that pond
- » A warming house is needed for skating



MERRITT COMMUNITY RECREATION AREA SITE INVENTORY

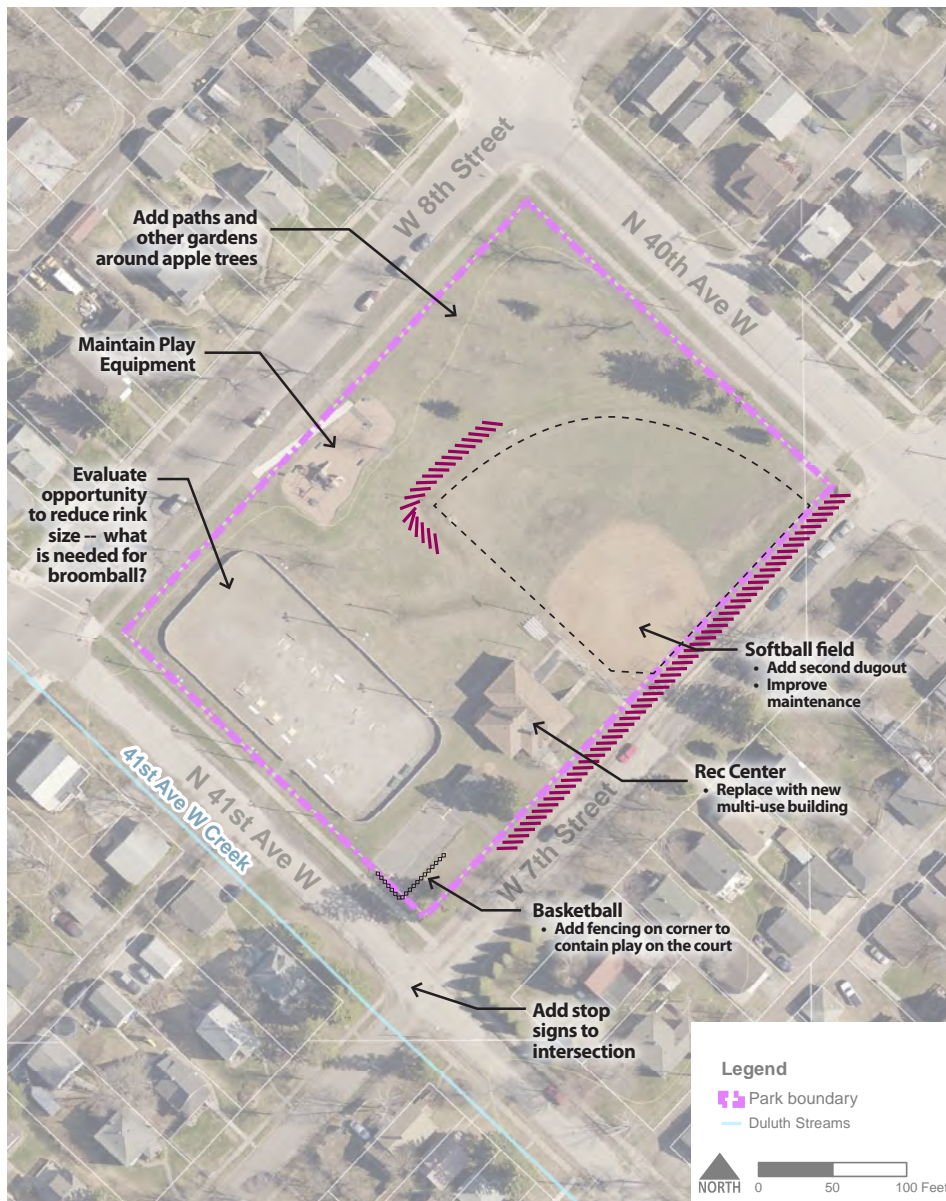
Existing Conditions

The facilities in Merritt are generally in fair to good condition. A few recent updates have been made to the playground area and basketball court. Some features are on their last legs for usability and will need to be updated soon.

The basketball court is smaller than a typical regulation court, relatively new, and in good condition. The softball field is well used with an infield that could use some resurfacing. The softball field has one chain link dugout, bleachers, and lights. The hockey boards stay up all year and are in poor condition. Horseshoe pits are located in the hockey rink area, but they are scheduled for relocation to Wheeler Park. The playground has had recent ADA accessibility improvements, but the benches and some of the equipment are in poor condition.

The park building is in poor condition. It has not been updated in years, is not ADA accessible, and is not able to be easily updated.

Overall grading and drainage issues exist, especially on and around the softball



MERRITT COMMUNITY RECREATION ARE PARK SITE ANALYSIS

field. The area in the center of the park, between the hockey rink, building, and softball field, is not well graded and is unusable space.

Needs Assessment/Input Summary

At the stakeholder and community meetings, a desire was expressed for every park in the corridor to have basic amenities, including a bench, a picnic table, and a grill. The benches at Merritt are in poor condition, and picnic tables and grills would be welcomed amenities. Wayfinding and directional signage to each park, within each park, and to nearby trails are also desired as a way to promote the parks. A central kiosk sign with ability to post neighborhood information is also desired.

The public input process revealed the desire for a new community building or pavilion that would be open to park users during regular hours every day.



The existing play equipment includes accessible elements



The community orchard is well cared for



Boards at the existing broomball rink are in fair condition



The ballfield lacks a second dugout



FIGURE 2.25 MERRITT COMMUNITY RECREATION AREA MINI-MASTER PLAN CONCEPT

Some form of community gathering space and identity feature is desired to bring the community together and encourage engagement in the park.

Overall, updates to the existing park features are necessary to continue the functionality of the park. The softball field needs resurfacing, drainage pipe in the outfield, and a second dugout. The hockey rink needs new boards and better managed lighting for dark winter nights. The hockey rink is voluntarily maintained by Northwoods Children's Services. A shade structure with benches and picnic tables is desired near the existing playground. The playground container and equipment needs to be updated to remove safety hazards.

Infrastructure and safety improvements on the adjacent sidewalks to the park should be completed with future street reconstruction as part of public works improvements. Crosswalks on adjacent streets and stop signs should be improved and added at surrounding intersections.

Concept Plan & Recommendations

The concept plan for Merritt Community Recreation Area includes overall drainage improvements, minor recreational improvements, and park gathering spaces, including a pavilion and building replacement. and accessibility, and canoe/kayak launch improvements.

Phasing & Cost Estimates

PHASE 1: SHORT-TERM

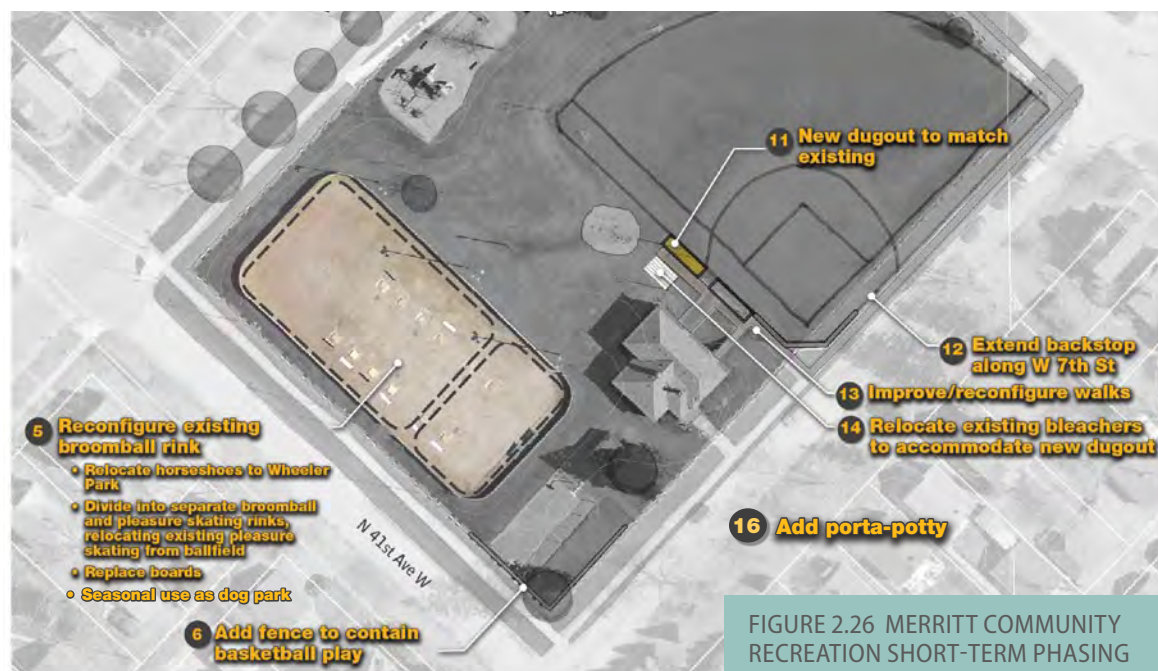


FIGURE 2.26 MERRITT COMMUNITY RECREATION SHORT-TERM PHASING

ACTION			COST
#	CATEGORY	DESCRIPTION	
5	Demolition	Remove/Relocate Existing Horseshoes	With Wheeler costs
5	Recreation	Partition Existing Rink with Boards	\$5,000
5	Recreation	Replace Existing Hockey Boards	\$25,000
6	Infrastructure	Install New Chain Link Fence	\$10,800
11	Recreation	Build New Chain Link Fence Dugout	\$3,500
12	Recreation	Extend Existing Backstop	\$6,000
13	Circulation	Improve / Reconfigure walkways	\$10,360
16	Furnishings	Add porta-potty	\$2,500
Total Short-Term Improvement Costs			\$63,160

PHASE 2: LONG-TERM



FIGURE 2.27 MERRITT COMMUNITY RECREATION LONG-TERM PHASING

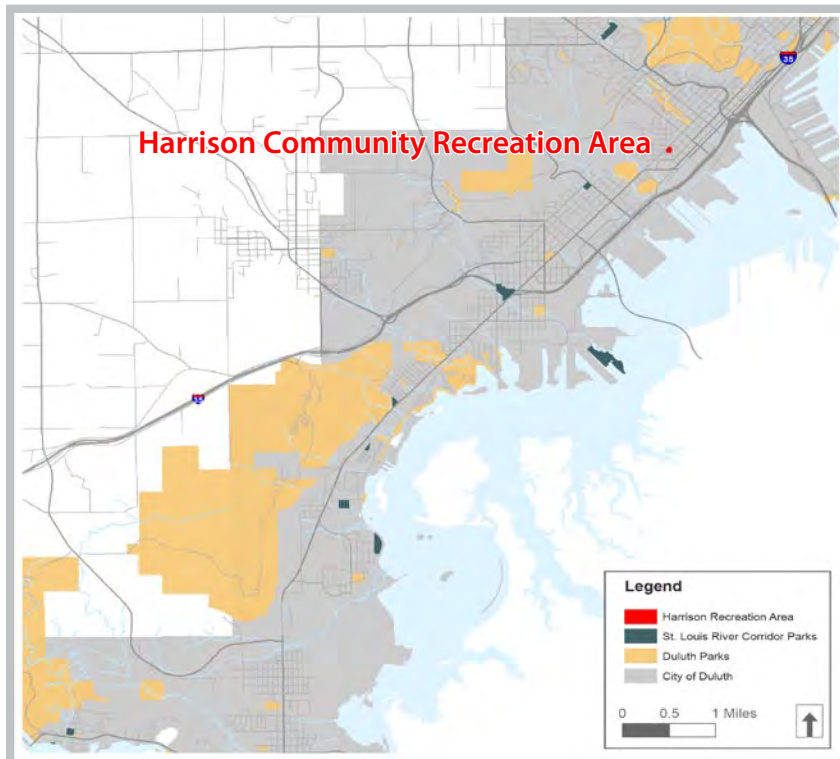
ACTION			COST
#	CATEGORY	DESCRIPTION	
1	Furnishings	Add Picnic Tables (2)	\$4,000
2	Buildings	Build New Picnic Shelter	\$30,000
3	Furnishings	Improve Seating - New Benches (3)	\$3,600
4	Circulation	New Sensor-Activated/Automatic Pedestrian Crossing	\$10,000
7	Circulation	New Four-Way Stop - Signs	\$4,000
8	Circulation	Add Children At Play Signs	\$5,000
9	Demolition	Relocate Existing Apple Trees (3)	\$750
10	Recreation	Improve Field Drainage & Condition	\$50,000
10	Stormwater	Install New Raingarden	\$25,500
15	Demolition	Remove Existing Building	TBD
15	Buildings	Build New Community Building	\$500,000
Total Long-Term Improvement Costs			\$632,850
Total Short-Term Improvement Costs			\$63,160
Total Improvement Costs			\$696,010



HARRISON COMMUNITY RECREATION AREA

Summary and Overview

Harrison Community Recreation Area is a two acre park in the Lincoln Park Neighborhood. It is located on W 3rd Street, adjacent to single-family homes and small businesses. The park is busy and active with a playground, community center building, basketball court, tennis courts, softball field, and Miracle Field. A farmers market takes place once a week in the park during the summer months. The park building is heavily programmed. The “front” area of the park along 3rd Street is well-used, while the “back” area of the park (tennis courts and softball field) is underutilized.



HARRISON COMMUNITY RECREATION AREA LOCATION MAP

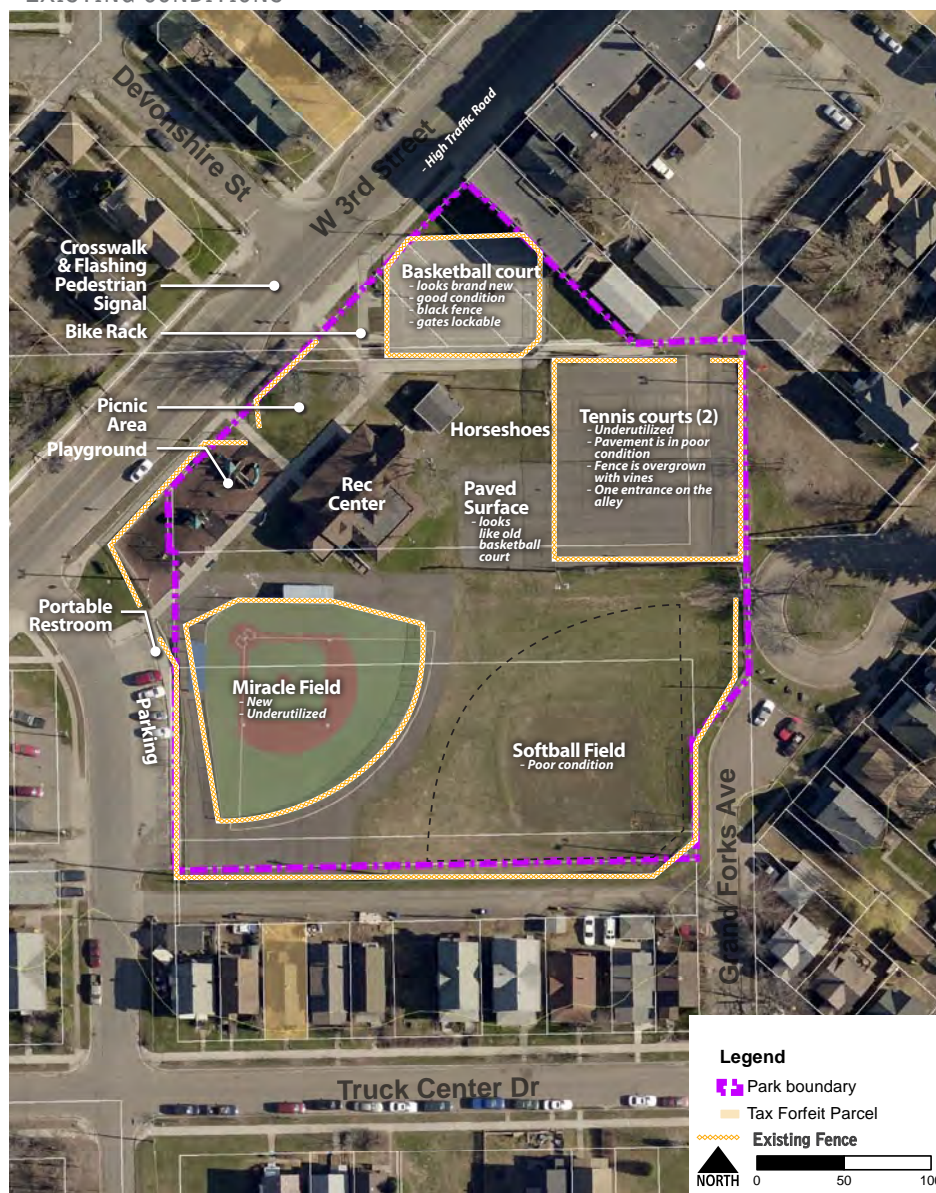
STRENGTHS/OPPORTUNITIES:

- » New basketball court is in good condition
- » The Miracle Field is in good condition and has the opportunity for more scheduled programming
- » Recreation building is well used, opportunity to improve outdoor space for picnics/gatherings
- » Large, flat grassy area where softball field is located is rarity in west Duluth, opportunity to better utilize this space for open play
- » Lighting exists on tennis courts and softball field
- » Farmers market is opportunity to expand food program with community garden plots, demonstration gardens, or greenhouse
- » Stone walls, ornamental fencing, and park building provide welcoming feel to the park

ISSUES:

- » Softball field is underutilized and in poor condition
- » Fencing creates barriers to circulation
- » Tennis courts are in poor condition and underutilized
- » Recreation building has water issues in the basement
- » Playground surface is unsafe
- » Lack of parking during events and large gatherings
- » Lack of clear circulation/connectivity through the park
- » Some invasive species (Japanese knotweed) and weedy areas exist along fencing

EXISTING CONDITIONS



HARRISON COMMUNITY RECREATION AREA SITE INVENTORY

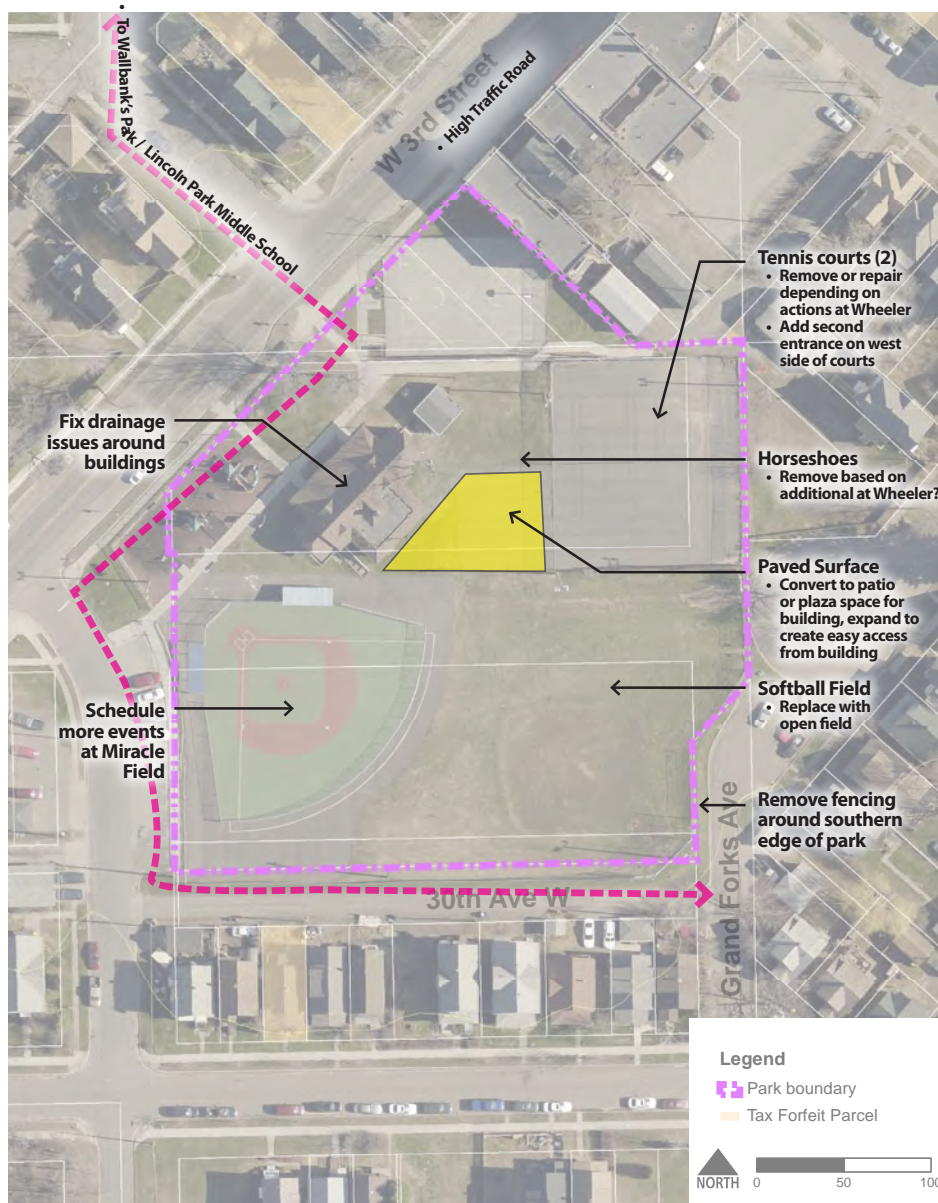
Existing Conditions

The northwestern half of Harrison Recreation Area is generally in good condition: the playground, park building, basketball court, and Miracle Field are all well used and maintained. The southeastern half of the park is underutilized and has not been updated in years: the softball field, tennis courts, and former basketball court pavement are in fair condition, but could use major improvements if further use is to continue.

The park has lots of fencing, which makes it feel isolated and enclosed. The fencing along with dead-end streets and alleys on the south and east sides of the park make it a barrier to connectivity in the neighborhood.

Needs Assessment/Input Summary

At the stakeholder and community meetings, a desire was expressed for every



HARRISON COMMUNITY RECREATION ARE PARK SITE ANALYSIS

park in the corridor to have basic amenities, including a bench, a picnic table, and a grill. Harrison does have the need for additional benches, picnic tables, and grills, especially in coordination with an outdoor patio and gathering space adjacent to the recreation building. Wayfinding and directional signage to each park, within each park, and to nearby trails are also desired as a way to promote the parks. Trail connections and better connectivity to schools around Harrison are desired. Although an enhanced crossing exists across 3rd Street, some residents still find it dangerous to cross the street there.

Public input focused on the need to better utilize the spaces in the park, especially the tennis courts and softball field. There is a desire for an improved playground, more open play space for free, active recreation, as well as more park amenities. Lighting is desired throughout the park.

Community gathering space and garden plots are desired to increase access to fresh food in the neighborhood. Paved areas should be removed and more greenery added throughout the park.



The basketball court is in new condition



The community center is highly utilized



The open space north of the community center is utilized for a farmer's market



The miracle field is highly utilized



FIGURE 2.28 HARRISON COMMUNITY RECREATION AREA MINI-MASTER PLAN CONCEPT

Concept Plan & Recommendations

The concept plan for Harrison includes the removal of the tennis courts and softball field for the addition of community gardens, a picnic area, a new trail connection, and space for a potential greenhouse to be managed by a partnership organization. The removal of fencing and addition of shade trees should improve the overall appearance and feel of the entire park. Additional minor improvements are noted throughout the park.

Phasing & Cost Estimates

PHASE 1: SHORT-TERM



FIGURE 2.29 HARRISON COMMUNITY RECREATION AREA SHORT-TERM PHASING

ACTION			COST
#	CATEGORY	DESCRIPTION	
5	Demolition	Remove/Relocate Existing Horseshoes	With Wheeler costs
8	Vegetation	Community Garden Plots	\$15,000
9	Circulation	New Walkways	\$3,375
11	Vegetation	Add demonstration garden	\$15,000
13	Circulation	Install New Park Wayfinding Sign	\$2,000
15	Vegetation	Plant New Shade Trees	\$9,600
16	Demolition	Remove Existing Miscellaneous Fence Components	\$2,500
17	Circulation	Stripe On-Street Bike Path	\$1,800
18	Demolition	Remove Existing Tennis Courts, Fence, and Pavement	\$20,000
19	Furnishings	New Picnic Tables (5)	\$10,000
Total Short-Term Improvement Costs			\$79,275

PHASE 2: LONG-TERM



ACTION			COST
#	CATEGORY	DESCRIPTION	
1	Circulation	Enhance Pedestrian Crossing Amenity	\$10,000
3	Recreation	Replace Play Surface with Poured-In-Place Rubber Surface	\$63,000
4	Circulation	New Sidewalk - 4' Concrete	\$38,500
5	Recreation	Create Natural Play Area	\$50,000
6	Vegetation	Plant New Ornamental/Fruit Tree	\$2,800
7	Building	Space for new Greenhouse	TBD
9	Circulation	New Walkways - 10' Concrete Connection from Patio	\$5,000
10	Lighting	New Pedestrian Lights	\$16,000
12	Vegetation	New Pollinator Gardens	\$5,850
14	Circulation	New Paved Trail Connection - 6' Concrete	\$26,400
20	Circulation	New Patio	\$49,500
21	Vegetation	Open Lawn	\$5,000
Total Long-Term Improvement Costs			\$272,050
Total Short-Term Improvement Costs			\$79,275
Total Improvement Costs			\$351,325



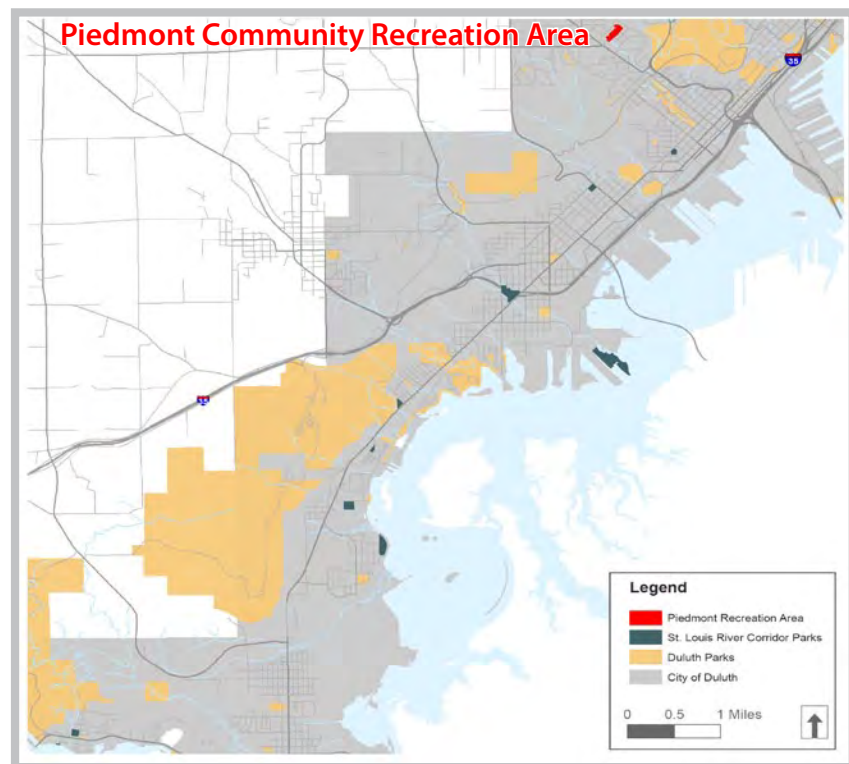
PIEDMONT COMMUNITY RECREATION AREA

Summary and Overview

Piedmont Community Recreation Area is a 12-acre park in the Piedmont Heights Neighborhood. The park is relatively hidden in the neighborhood as it is surrounded by single-family homes with street access on W 23rd Street and from an alley between N 22nd and 23rd Avenues. It is a heavily used hockey park with two hockey rinks and a community building that serves as a warming house. A softball field and play area also exist in the park. Significant topography exists which create multiple levels throughout the park. Wooded areas and rock outcroppings on the north side of the park create a buffer between the softball field and residential backyards.

Existing Conditions

Access points to the park are limited: the main entrance is on W 23rd St., which dead ends at the park entrance. The other entrances are a foot path through the woods on the north side of the park and at the ends of N 22nd and 23rd Avenues. A small parking lot is located at the southwestern entrance to the park.



PIEDMONT COMMUNITY RECREATION AREA LOCATION MAP

Recreation features in the park include a community building, two hockey rinks, a pleasure skating area, a playground, and a softball field. The lower hockey rink is a brand new, high quality rink and in excellent condition. The upper rink is in fair condition with boards that need replacing. The playground is in good condition, and the softball field is in poor condition with drainage issues, weedy infield, and leaning fencing.

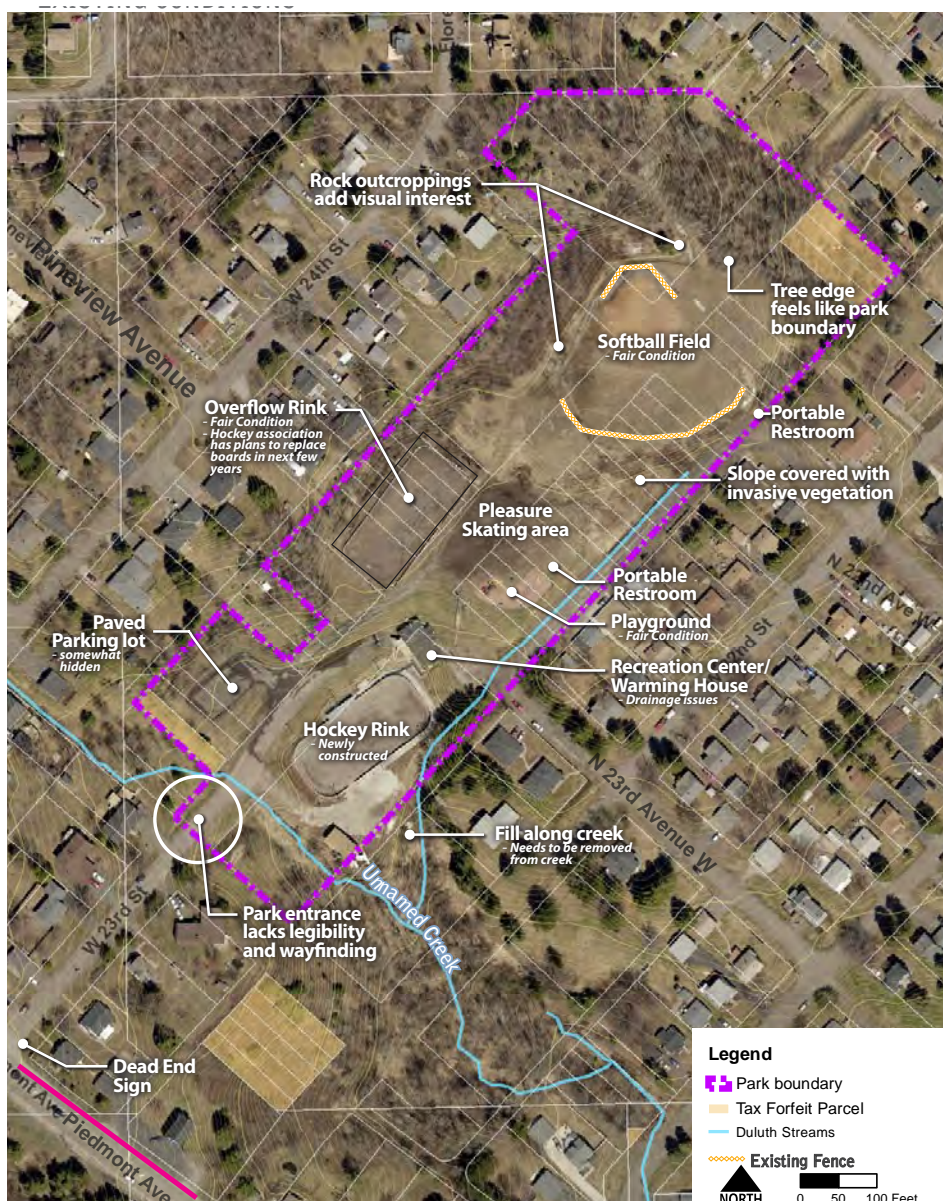
The Piedmont Hockey Association is very involved in the development and maintenance of the park facilities. Volunteers with the association have made updates to the park building and recently built the brand new lower rink.

STRENGTHS/ OPPORTUNITIES:

- » Brand new hockey rink on lower level of park with bleachers, lights
- » Piedmont Hockey Association families are very involved in maintaining and improving the park
- » Active softball association
- » Rock outcroppings and forested area create a pleasant, natural setting

ISSUES:

- » Major stormwater drainage issues exist throughout the park—during rain events, water creates deep channels, which undercuts and damages paved driveways and surfaces
- » Lack of parking for events, cars park on the alley between N 22nd and 23rd Avenues
- » Invasive tansy covers the upper slope between the softball field and pleasure skate/playground area
- » Softball field fencing is leaning
- » Softball field has poor drainage
- » Lack of recreation opportunities beyond hockey and softball
- » Lack of ADA accessibility throughout the park
- » Playground lacks sight lines from softball and hockey areas
- » Circulation and access for vehicles and pedestrians within the park need improvement



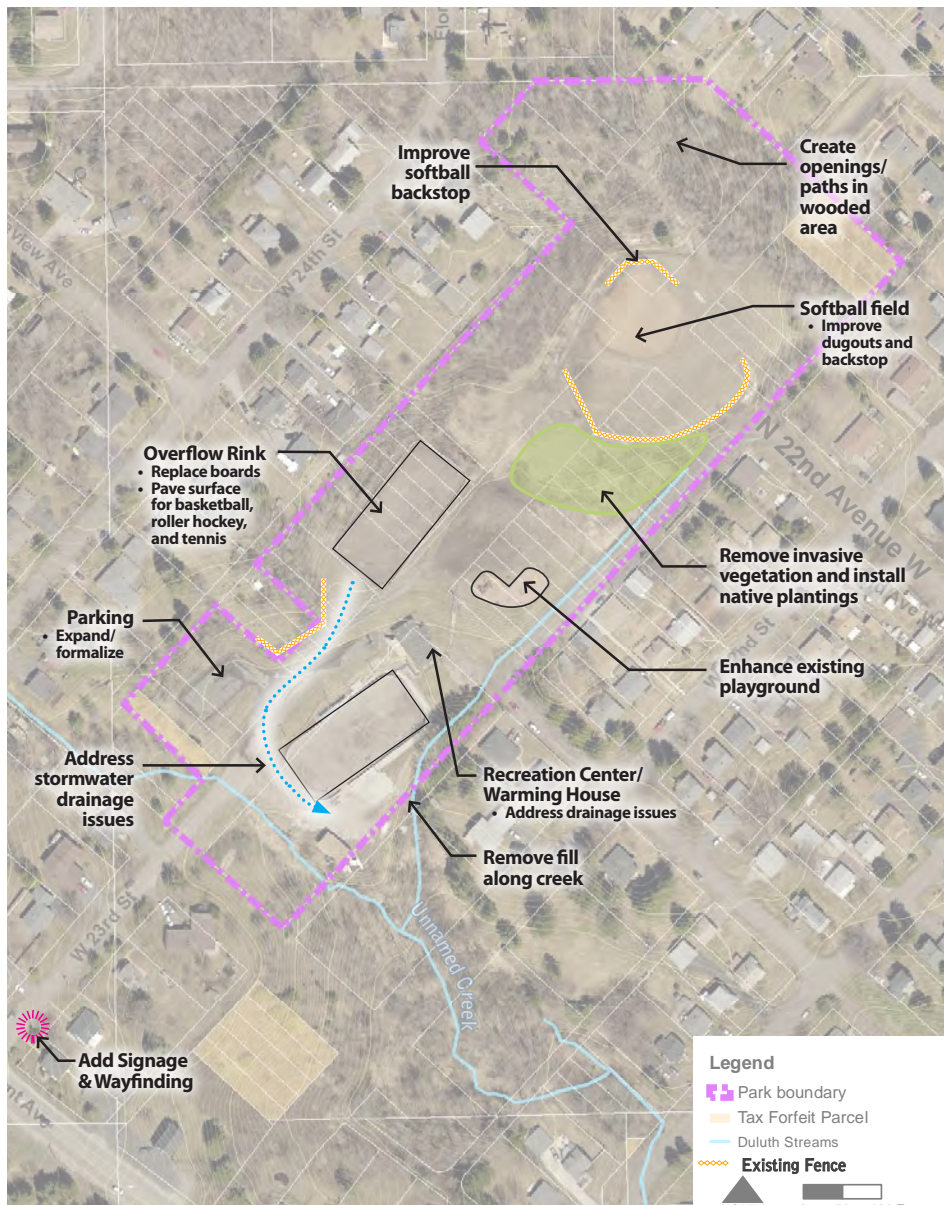
PIEDMONT COMMUNITY RECREATION AREA SITE INVENTORY

Needs Assessment/Input Summary

At the stakeholder and community meetings, a desire was expressed for every park in the corridor to have basic amenities, including a bench, a picnic table, and a grill. Public input did not reveal the desire for these specific amenities in Piedmont. Wayfinding and directional signage to each park, within each park, and to nearby trails are also desired as a way to promote the parks.

There was a desire expressed to make the two hockey rinks usable in the summer season—potentially use the lower rink for a small dog park and pave the upper rink for basketball or other court sports.

Overall updates needed to the softball field include: improved fencing, new dugouts with paved surface, improved infield that can be used for slow pitch and fast pitch softball leagues, and improved drainage. Electricity service at the field is desired for pitching machines. Parking is needed near the softball field for games.



PIEDMONT COMMUNITY RECREATION ARE PARK SITE ANALYSIS

Circulation and access to the park from the neighborhood and between the upper and lower levels of the park need to be improved. The soft surface trail that runs along the upper rink to the softball field could be graded better and the surface improved. The park entrance at W 23rd St. lacks legibility and wayfinding—this area should be organized to provide clear direction to parking and walking paths. The pleasure rink space needs to be graded to improve circulation in the summer months.

The Piedmont Hockey Association has identified several desired improvements in the park: expanded parking, improved drainage, sound/technology and comfort upgrades, improved accessibility from lower to upper rink, expand park options beyond hockey and baseball. They would also like to see increased funding from the City of Duluth and a full time on-site manager. The association has plans to complete the following improvements: connect lower and upper level of building with an inside staircase, install rubber floor mats upstairs, connect sound system to penalty box, expand parking between garage and neighboring property, expand parking outside upper warming house back entrance, new



The lower rink is in new condition



Erosion in the park is a major concern and poses a threat to public safety and water quality



Poor stormwater management results in saturated conditions and unusable space



The softball field currently lacks dugouts

rink and boards at upper rink, new energy efficient lighting system for both rinks, replace concrete at both entrances to building, install sound system at upper rink, pave the upper rink for court sports, install roof over lower rink, update lighting system in lower level warming house.

Concept Plan & Recommendations

The concept plan for Piedmont prioritizes stormwater management and infrastructure improvements. Without these fixes, the park will not be able to function for recreation. Other circulation and recreational improvements are identified throughout the park.

A second community engagement process was conducted to discuss the balance of needed stormwater infrastructure improvements with the desire for near-term facility upgrades. At this meeting, members from the two largest park users (softball and hockey) communicated the strong desire for the enhancement of the following features prior to the start of their respective next seasons. These key aspects from the community include:

- » Enhanced accessibility, parking, and signage
- » Development of the sport court on the upper rink (concrete paving, reusing the boards)
- » Improvements to the softball field (including addressing drainage)

Each of these key features comes with significant investment in stormwater infrastructure and require a permitting and review process of construction documents prior to commencement of any built work. To expedite the timing, the Piedmont community is planning to move forward in developing a more detailed storm water treatment strategy/ plan

for the anticipated work. As of today there is no city funding allocated for the stormwater treatment improvements needed and grants were brought up as a potential source of funding, including County Soil and Water Conservation District and Coastal Grants.

The Piedmont community group has indicated they intend to move forward by working directly with an outside engineering firm to develop a schematic plan to align necessary structural improvements (sport court paving, parking improvements, field enhancements) with stormwater runoff needs, then submit a project proposal to the City of Duluth Facilities Department for review and approval. The timing of the construction of these improvements will be determined by the combination of available funding and approved design and permitting.



The upper rink requires improvements

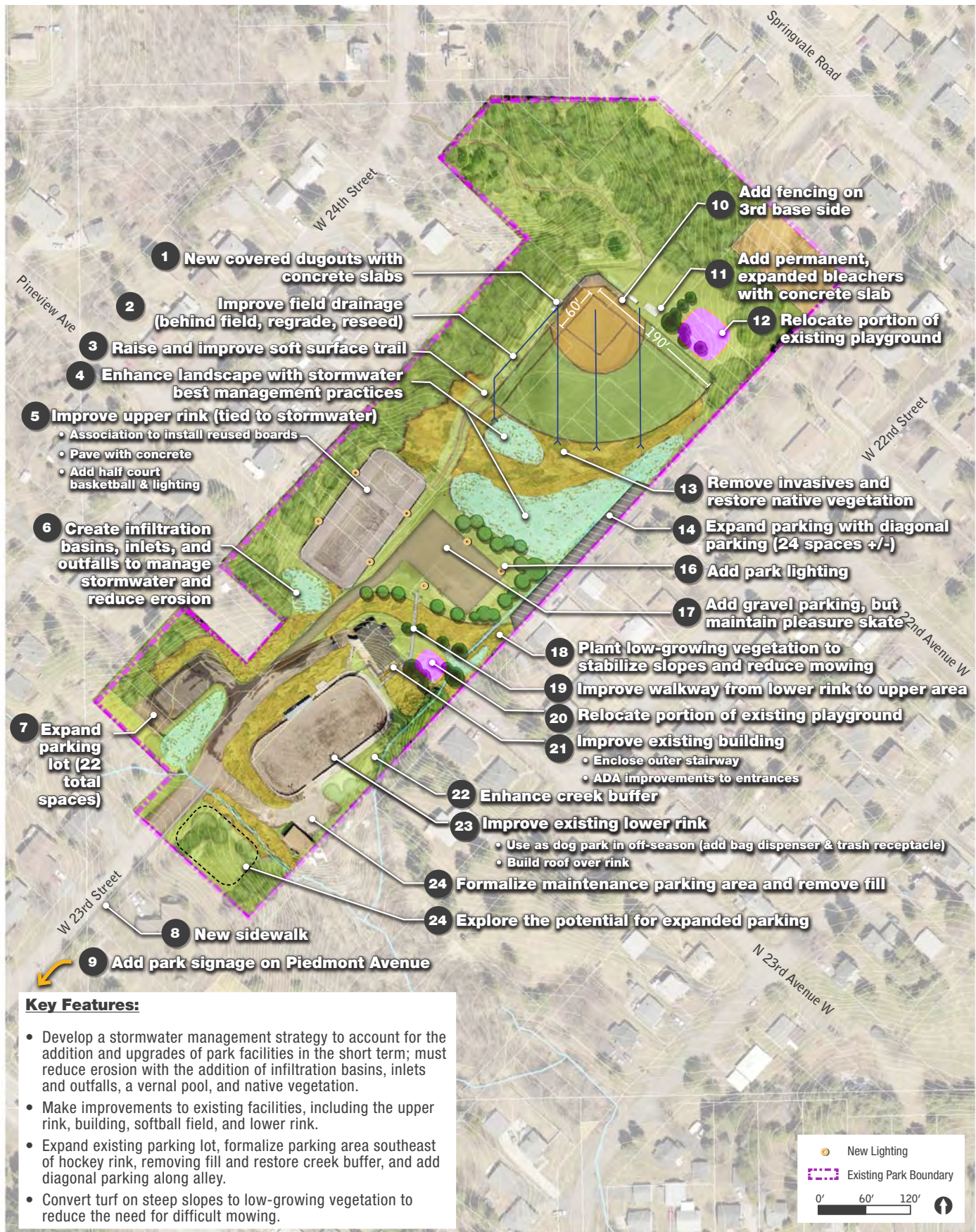


FIGURE 2.31 PIEDMONT COMMUNITY RECREATION AREA MINI-MASTER PLAN CONCEPT

Phasing & Cost Estimates

PHASE 1A: SHORT-TERM (WITHOUT STORMWATER MANAGEMENT STRATEGIES)



FIGURE 2.32 PIEDMONT COMMUNITY RECREATION AREA SHORT-TERM IMPROVEMENTS (NO SW)

ACTION			COST
#	CATEGORY	DESCRIPTION	
1	Recreation	New Covered Dugouts - Provide Concrete Slab	\$2,304
8	Circulation	New Sidewalk - 4' Concrete	\$24,000
9	Circulation	Add Park Signage on Piedmont Avenue	\$1,000
11	Recreation	Add Permanent, Expanded Bleachers	\$10,000
13	Vegetation	Remove Invasives and Restore Native Vegetation	\$900
18	Vegetation	Plant Low-Growing Vegetation to Stabilize Slopes and Reduce Mowing	\$6,800
19	Circulation	Improve Walkway from Lower Rink to Upper Area - 4' Concrete	\$4,000
21	Buildings	Improve Existing Building - ADA Improvements to Entrances	Bldg
21	Buildings	Improve Existing Building - Enclose Outer Stairway	Bldg
23	Furnishings	Improve Existing Lower Rink - Add Bag Dispenser	\$750
23	Furnishings	Improve Existing Lower Rink - Add Trash Receptacle	\$1,000
24	Circulation	Formalize Maintenance Parking Area	\$7,500
Total Short-Term Costs (without Stormwater)			\$58,254 + Building Improvement Costs

PHASE 1B: SHORT-TERM (WITH STORMWATER MANAGEMENT STRATEGIES)



ACTION			COST
#	CATEGORY	DESCRIPTION	
2	Recreation	Improve field drainage (behind field, regrade, reseed)	\$100,000
4	Stormwater	Create Vernal Pool and Enhance Wetland Vegetation	\$25,000
5	Recreation	Improve Upper Rink - Pave with Concrete + Install Reused Boards + Install Half-court Basketball and lighting (tied to #6)	\$92,000
6	Stormwater	Create Infiltration Basins, Inlets and Outfalls to Manage Stormwater and Reduce Erosion	\$100,000
10	Recreation	Add 3rd Base Fencing	\$5,000
12 & 20	Recreation	Relocate portions of existing playground (edging, footings, play surface)	\$15,000
14	Circulation	Expand Parking with Diagonal Parking (gravel, stormwater, signage)	\$84,000
16	Lighting	Add Park Lighting	\$12,000
17	Circulation	Add gravel parking (mid-terrace)	\$21,000
24	Circulation	Explore potential for expanded parking	TBD
Total Short-Term Costs (with Stormwater)			\$454,000
Total Short-Term Costs			\$512,254 (+ building improvement costs)

PHASE 2: LONG-TERM



ACTION			COST
#	CATEGORY	DESCRIPTION	
3	Circulation	Raise and Improve Soft Surface Trail - 8' wide	\$2,000
7	Circulation	Expand Parking Lot + stormwater	\$21,000
22	Natural Resources	Improve Creek Buffer	\$10,000
23	Recreation	Build New Roof Over Existing Rink	\$50,000
Total Long-Term Costs			\$83,000
Total Short-Term Costs			\$512,254 (+ building improvement costs)
Total Costs			\$595,254 (+ building improvement costs)



03. IMPLEMENTATION

Overview

The St. Louis River Corridor parks will be improved according to the mini-master plans in this document. Priorities will be given to improvements that have been identified as short term before any long term improvements.

Short term improvements include those identified to be completed within a 1-2 year time frame in line with grant applications from park and neighborhood organizations.

Long term improvement are those actions identified to be completed within a 3-10 year time frame in line with potential future funding availability.

All cost estimates are planning level estimates to be used for general budgeting purposes. Detailed cost estimates should be developed as projects are ready to be constructed.

St. Louis River Corridor Initiative

The Neighborhood Parks grant fund is one of many strategic initiatives that are part of the larger St. Louis River Corridor action plan. The City of Duluth plans to direct approximately \$18 million from the 1/2 and 1/2 tourism tax to St. Louis River Corridor projects. A portion of this money will be used for Grand Avenue and Neighborhood Parks projects. The money for the projects identified in this document will be distributed as matching dollars for approved projects. \$90,000 will be allocated to each qualifying park.

EXAMPLE LIST OF MATCHING DONATIONS

DONATION	MATCHING \$
Donated equipment and furnishings in park	Cost of equipment
Trees/Shrubs	\$150/tree; \$40/shrub
Materials for picnic shelter, tables, benches	Cost of materials

Partnerships & Funding

A fixed amount of \$90,000 will be available per park with a match requirement of \$10,000 from other sources. The City of Duluth encourages residents and neighborhoods of the St. Louis River Corridor parks to seek out partnerships with area businesses, recreational organizations, and neighborhood groups to order to provide matching donation or labor to meet the match requirement

Volunteer Opportunities

In all parks, there are opportunities for neighborhood members and interested volunteers to provide labor and services that can be used as matching for the St. Louis River Corridor Neighborhood Grant Fund. A list of potential volunteer improvements is below:

VOLUNTEER TASK	MATCHING \$
Remove invasive species through hand-pulling, cutting, and spraying	\$23.07/person/hr
Build / Repair / Paint park pavilion structure, benches, picnic tables	Cost of materials and labor

