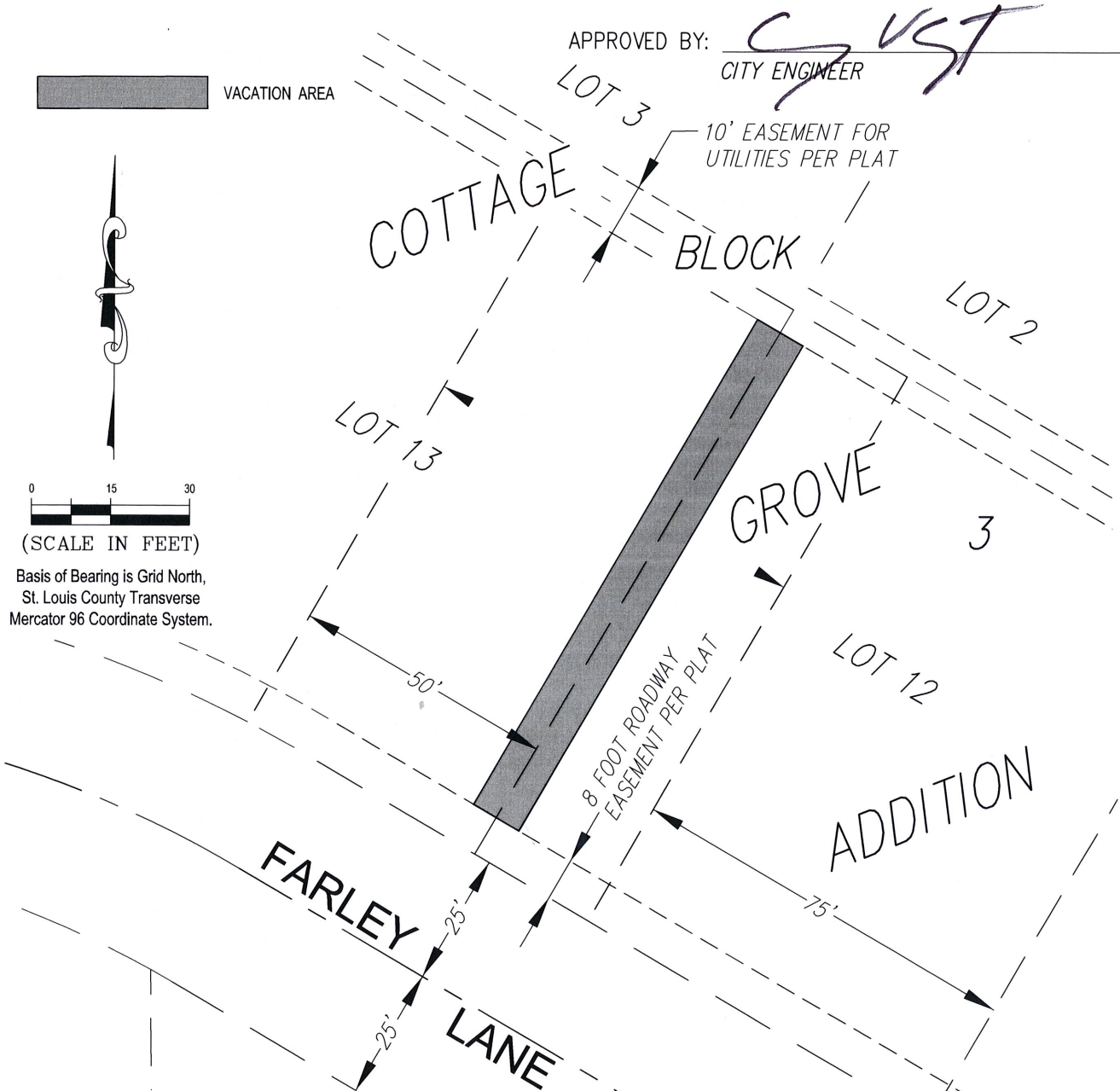


EXHIBIT

VACATION

VACATION DESCRIPTION:

A TEN (10) FOOT WIDE SEWER EASEMENT CENTERED ON THE COMMON LOT LINE TO LOTS 12 AND 13, BLOCK 3, COTTAGE GROVE ADDITION, CITY OF DULUTH, ST. LOUIS COUNTY, MINNESOTA. SAID SEWER EASEMENT LYING BETWEEN AN 8 FOOT WIDE EASEMENT FOR ROADWAY PURPOSES ABUTTING FARLEY LANE AND A 10 FOOT WIDE UTILITY EASEMENT COMMON TO LOTS 2, 3, 12 AND 13, SAID BLOCK 3, COTTAGE GROVE ADDITION.



(SCALE IN FEET)

Basis of Bearing is Grid North,
St. Louis County Transverse
Mercator 96 Coordinate System.

I hereby certify that this plan, specification, or report was prepared by me or under my direct supervision and that I am a duly Licensed Land Surveyor under the laws of the State of Minnesota.

Print Name: Paul A. Vogel

License # 44075

Signature: Paul A. Vogel

Date: 12/14/2016

REVISED: 12/14/16

DATE PREPARED: 11/17/16

PROJ NO: 110675

FILE: 110675 cSurv

SHEET 1 of 1 SHEETS



PERFORMANCE
DRIVEN DESIGN.

LHBcorp.com

21 W. Superior St., Ste. 500 | Duluth, MN 55802 | 218.727.8446