



County Land Explorer

St. Louis County, Minnesota

Exhibit A



Apple Tree Circle Garden Site

PARCEL ID: 010-2420-01340; 010-2420-01350; 010-2420-01390; 010-2420-01400

LEGAL DESCRIPTION: LOTS 19-25 BLOCK:007 HUNTER/MARKELLS GRASSY POINT ADDN TO DULUTH

Map created using County Land Explorer
www.stlouiscountymn.gov/explorer



0 0.005 0.01 0.02 0.03
mi

County Land Explorer

St. Louis County

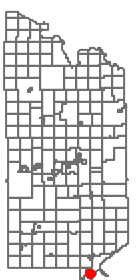
www.stlouiscountymn.gov/explorer

Minnesota

Disclaimer

This is a compilation of records as they appear in the Saint Louis County Offices affecting the area shown. This drawing is to be used only for reference purposes and the County is not responsible for any inaccuracies herein

© Copyright St. Louis County Minnesota | All Rights Reserved Printed: 4/15/2021



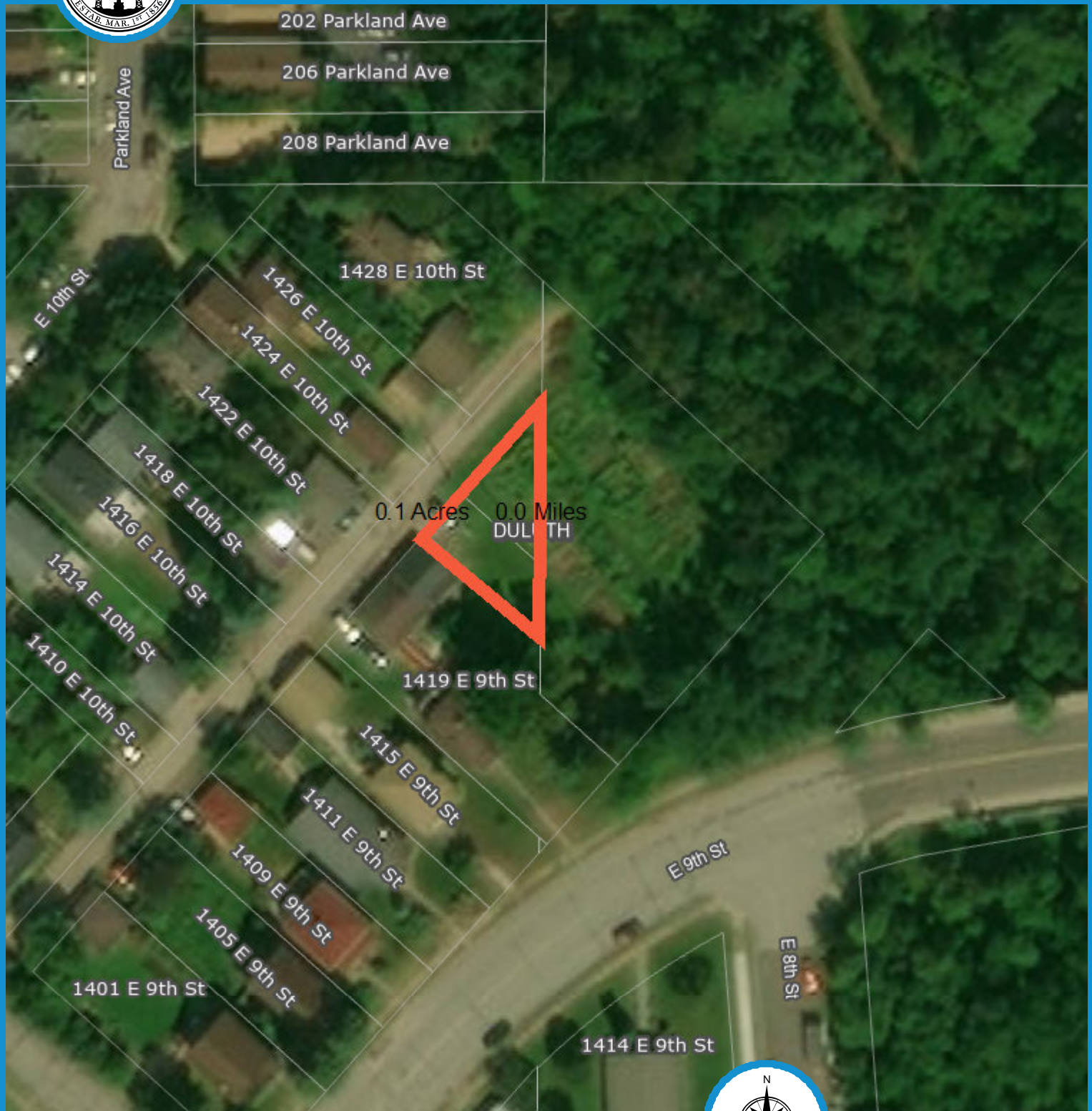
23



County Land Explorer

Exhibit A

St. Louis County, Minnesota



Chester Creek Garden Site

PARCEL ID: 010-0500-00980 and 010-0500-01000

LEGAL DESCRIPTION: LOT 10-11 BLOCK 6 CHESTER PARK

DIVISION OF DULUTH

Map created using County Land Explorer
www.stlouiscountymn.gov/explorer



County Land Explorer

St. Louis County

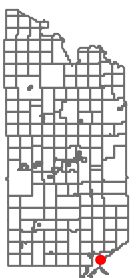
www.stlouiscountymn.gov/explorer

Minnesota

Disclaimer

This is a compilation of records as they appear in the Saint Louis County Offices affecting the area shown. This drawing is to be used only for reference purposes and the County is not responsible for any inaccuracies herein

© Copyright St. Louis County Minnesota | All Rights Reserved Printed: 4/15/2021

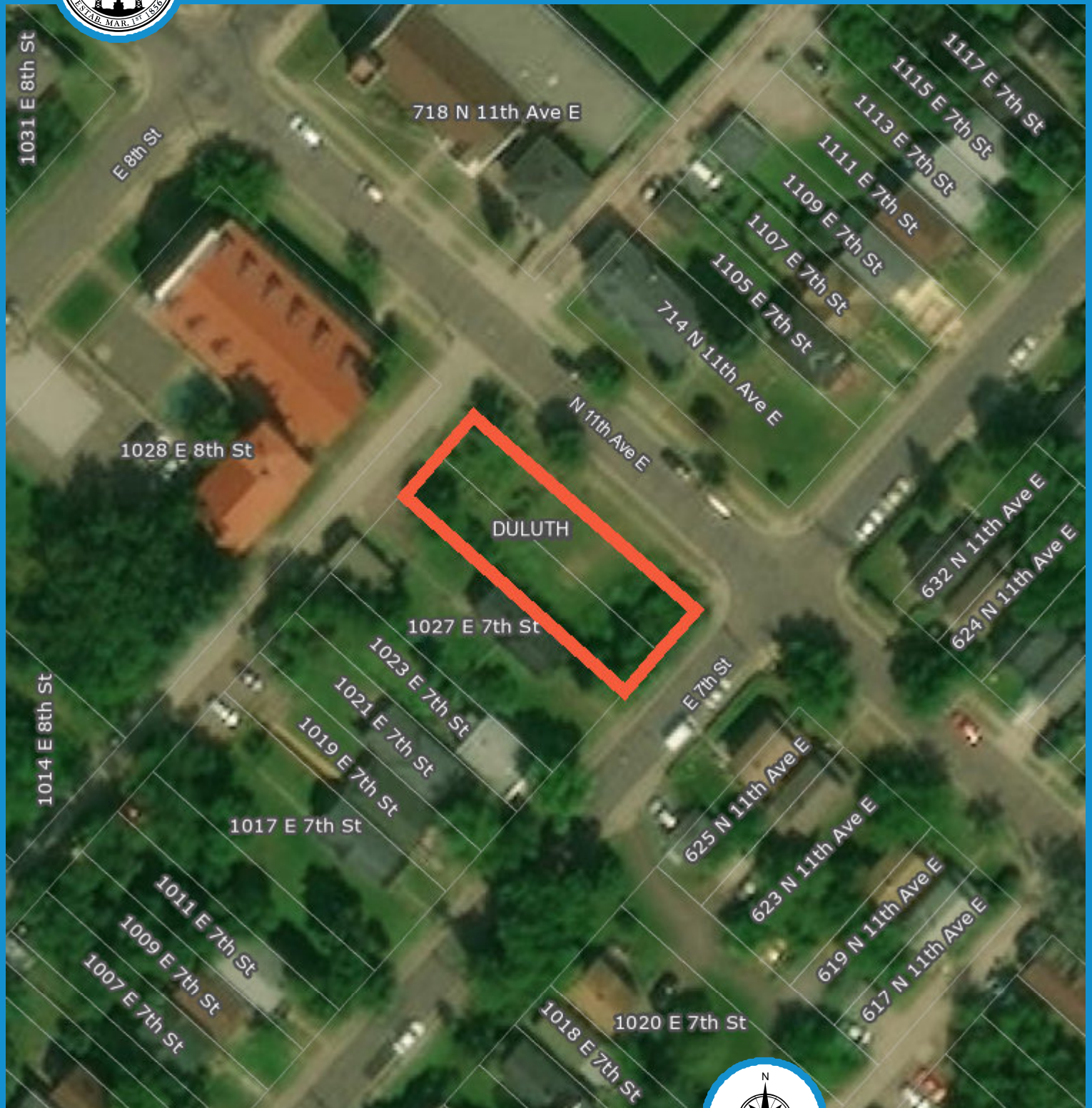




County Land Explorer

Exhibit A

St. Louis County, Minnesota



Stoney Ground Garden Site

PARCEL ID: 010-3850-04420 and 010-3850-04430

LEGAL DESCRIPTION: LOT 15-16 BLOCK 145 PORTLAND DIVISION

OF TOWN OF DULUTH

Map created using County Land Explorer
www.stlouiscountymn.gov/explorer



0 0.005 0.01 0.02 0.03
mi

County Land Explorer

St. Louis County

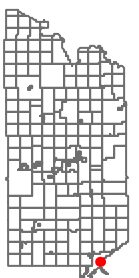
www.stlouiscountymn.gov/explorer

Minnesota

Disclaimer

This is a compilation of records as they appear in the Saint Louis County
Offices affecting the area shown. This drawing is to be used only for reference
purposes and the County is not responsible for any inaccuracies herein

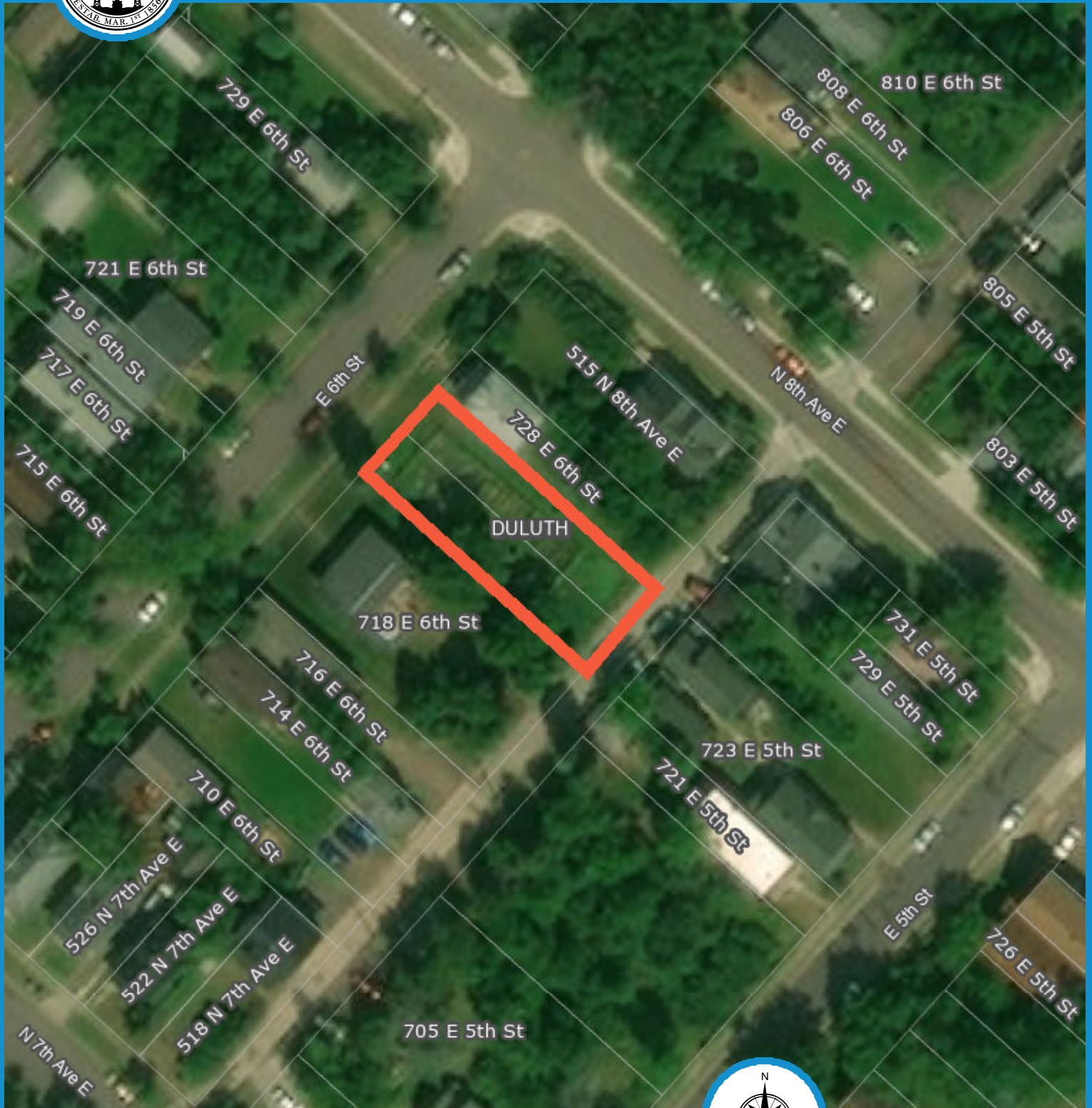
© Copyright St. Louis County Minnesota | All Rights Reserved Printed: 4/15/2021





County Land Explorer Exhibit A

St. Louis County, Minnesota



Rock Nut Garden Site

PARCEL ID: 010-3850-01000 and 010-3850-01010

LEGAL DESCRIPTION: LOT 12-13 BLOCK 126 PORTLAND

DIVISION OF TOWN OF DULUTH

Map created using County Land Explorer
www.stlouiscountymn.gov/explorer



0 0.005 0.01 0.02 0.03
mi

County Land Explorer

St. Louis County

www.stlouiscountymn.gov/explorer

Minnesota

Disclaimer

This is a compilation of records as they appear in the Saint Louis County Offices affecting the area shown. This drawing is to be used only for reference purposes and the County is not responsible for any inaccuracies herein

© Copyright St. Louis County Minnesota | All Rights Reserved Printed: 4/15/2021

