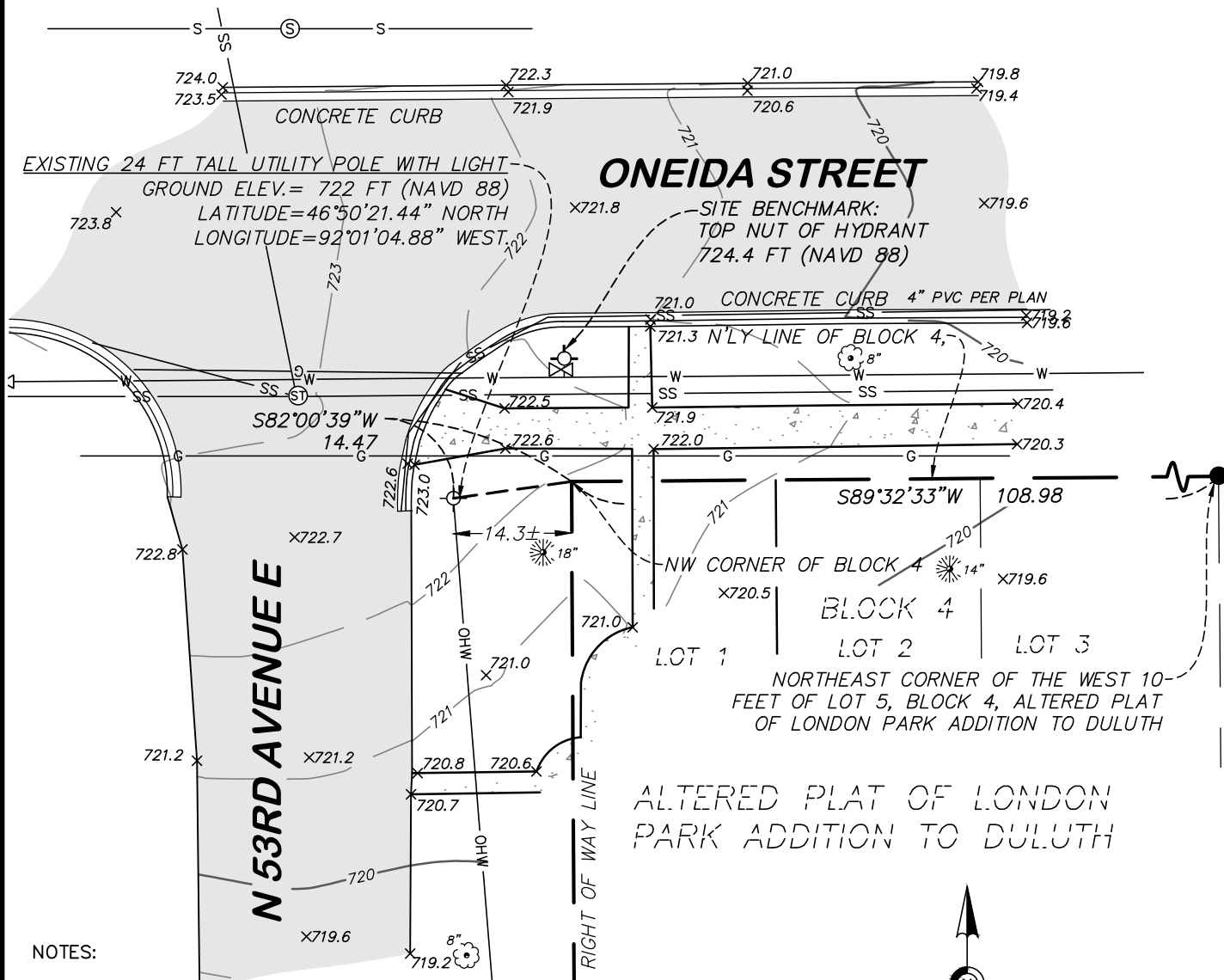


**SITE LOCATION SURVEY FOR:  
EDGE CONSULTING ENGINEERS, INC.**

**SITE LOCATION: Oneida Street and N 53rd Avenue E, Duluth, Minnesota**

**SITE NAME: CRAN RUMW LESTR 006**



**NOTES:**

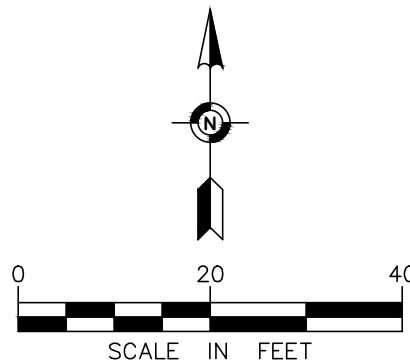
1. The orientation of this survey is based on the St. Louis County (South), Minnesota Coordinate Grid, NAD 83-2011 Adjustment.
2. The contours depicted hereon are per elevation data collected while conducting the fieldwork using Vertical Datum of 1988 (NAVD 88). The contour interval is 1 foot.
3. Existing utilities, services and underground structures shown hereon were located either physically, from existing records made available to us, by resident testimony, or by locations provided by Gopher State One Call, per Ticket No. 253112069. However, lacking excavation, the exact location of underground features cannot be accurately, completely and reliably depicted. Where additional or more detailed information is required, the client is advised that excavation may be necessary. Other utilities and services may be present and verification and location of all utilities and services should be obtained from the owners of the respective utilities prior to any design, planning or excavation.

**DESCRIPTION**

A point located within that part of North 53rd Avenue East, dedicated as Finlay Avenue on the Altered Plat of London Park Addition to Duluth, St. Louis County, Minnesota described as follows:

Commencing at the northeast corner of the west 10 feet of Lot 5, Block 4, Altered Plat of London Park Addition to Duluth; thence South 89 degrees 32 minutes 33 seconds West, assumed bearing, along the northerly line of said Block 4, a distance of 108.98 feet to the northwest corner of said Block 4; thence South 82 degrees 00 minutes 39 seconds West, a distance of 14.47 feet to said point.

Dated this 25th day of February, 2026



**LEGEND**

- FOUND IRON MONUMENT
- ⊙ SANITARY MANHOLE
- ⊕ STORM MANHOLE
- ⊗ GATE VALVE
- ⊙ HYDRANT
- ⊙ POWER POLE WITH LIGHT
- SS — STORM SEWER
- W — WATERMAIN
- OHW — OVERHEAD WIRE
- G — UNDERGROUND GAS
- S — SANITARY SEWER
- X 920.1 SPOT ELEVATION
- 920 EXISTING CONTOUR LINE
- OR TREE
- BITUMINOUS SURFACE
- CONCRETE SURFACE

**SITE LOCATION SURVEY FOR:**

**EDGE CONSULTING ENGINEERS, INC.**

**SITE LOCATION: Oneida Street and  
N 53rd Avenue E, Duluth, Minnesota**



**Egan, Field & Nowak, Inc.**  
land surveyors since 1872

**475 Old Highway 8 NW, Suite 200  
New Brighton, Minnesota 55112  
PHONE: (612) 466-3300  
WWW.EFNSURVEY.COM**

COPYRIGHT © 2025 By EGAN, FIELD & NOWAK, INC.